

Clerk's Room

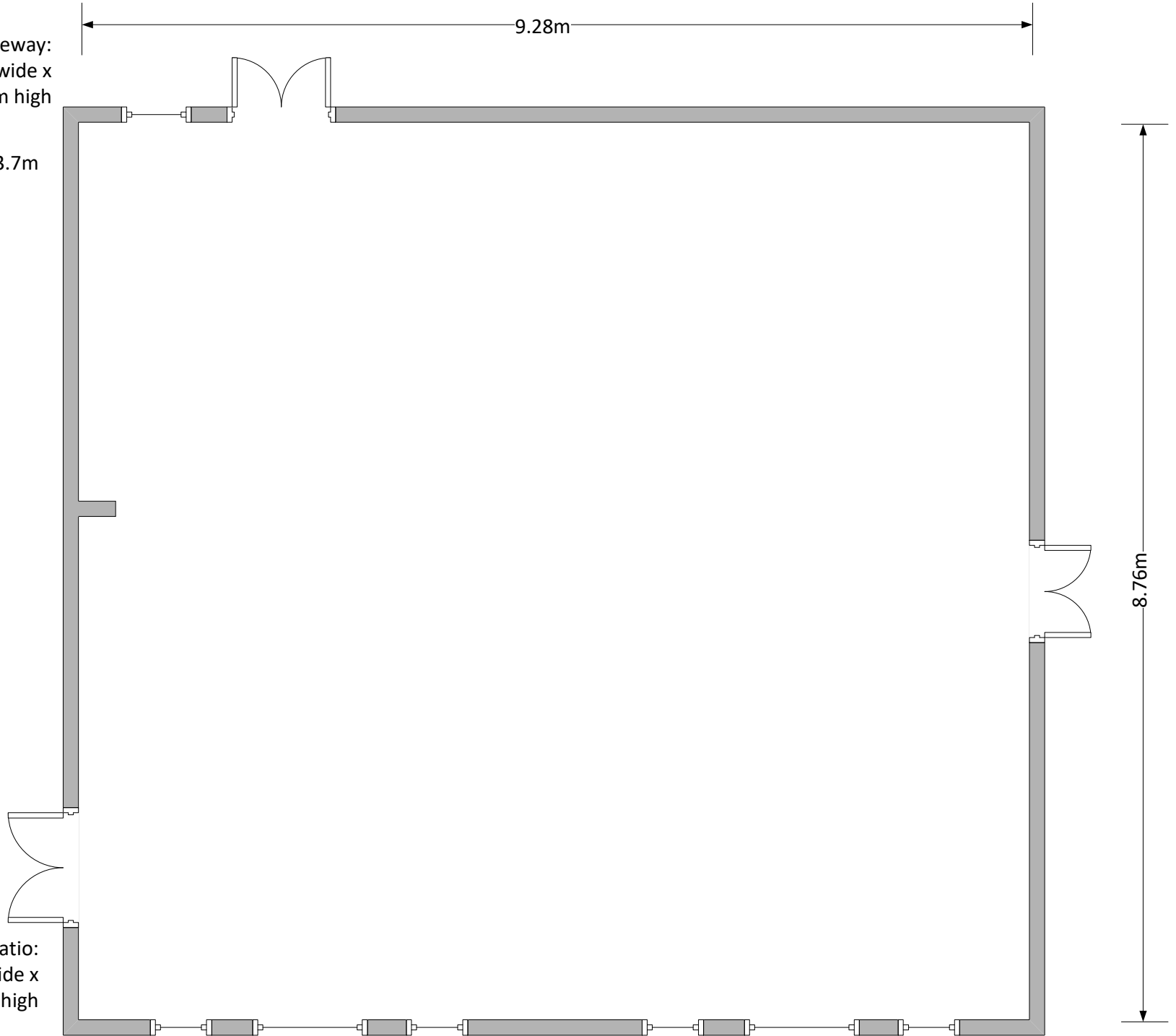
Doorway to passageway:
960mm wide x
2290mm high

Ceiling height 3.7m

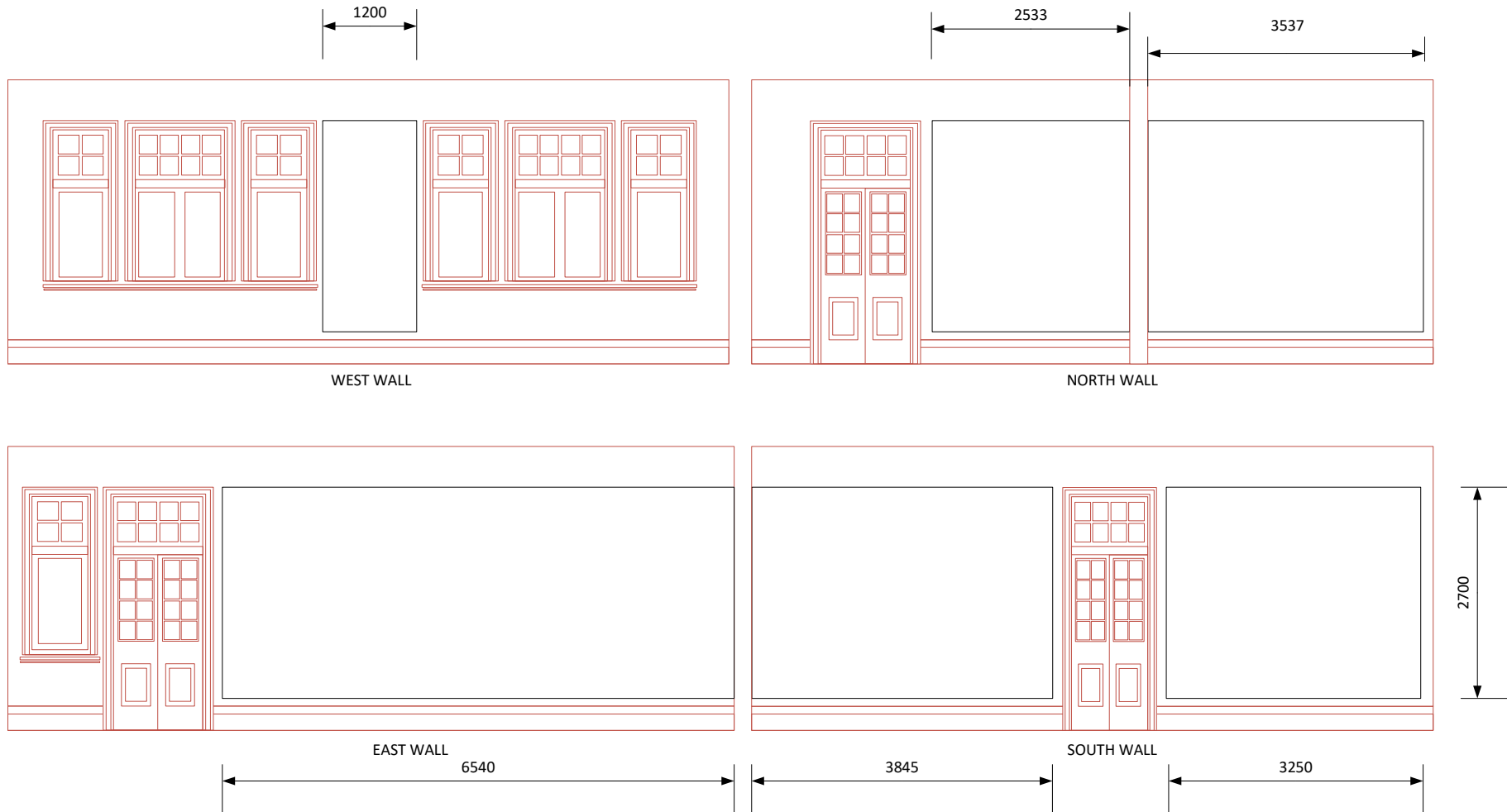
Doorway patio:
1070mm wide x
2270 high

9.28m

8.76m

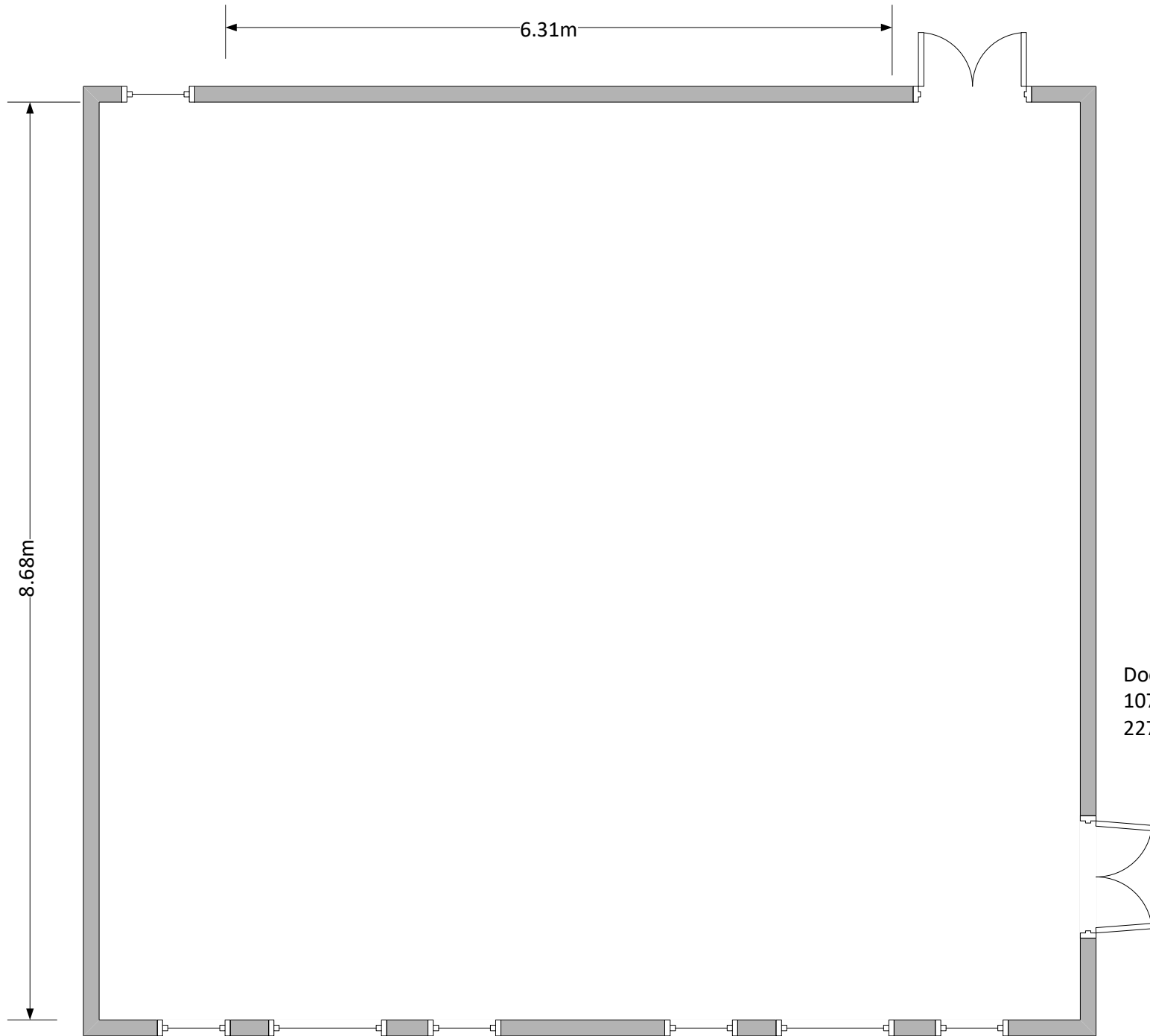


Clerk's Room Elevation



Total 20.634 linear metres

Barrister & Bailiff's Room

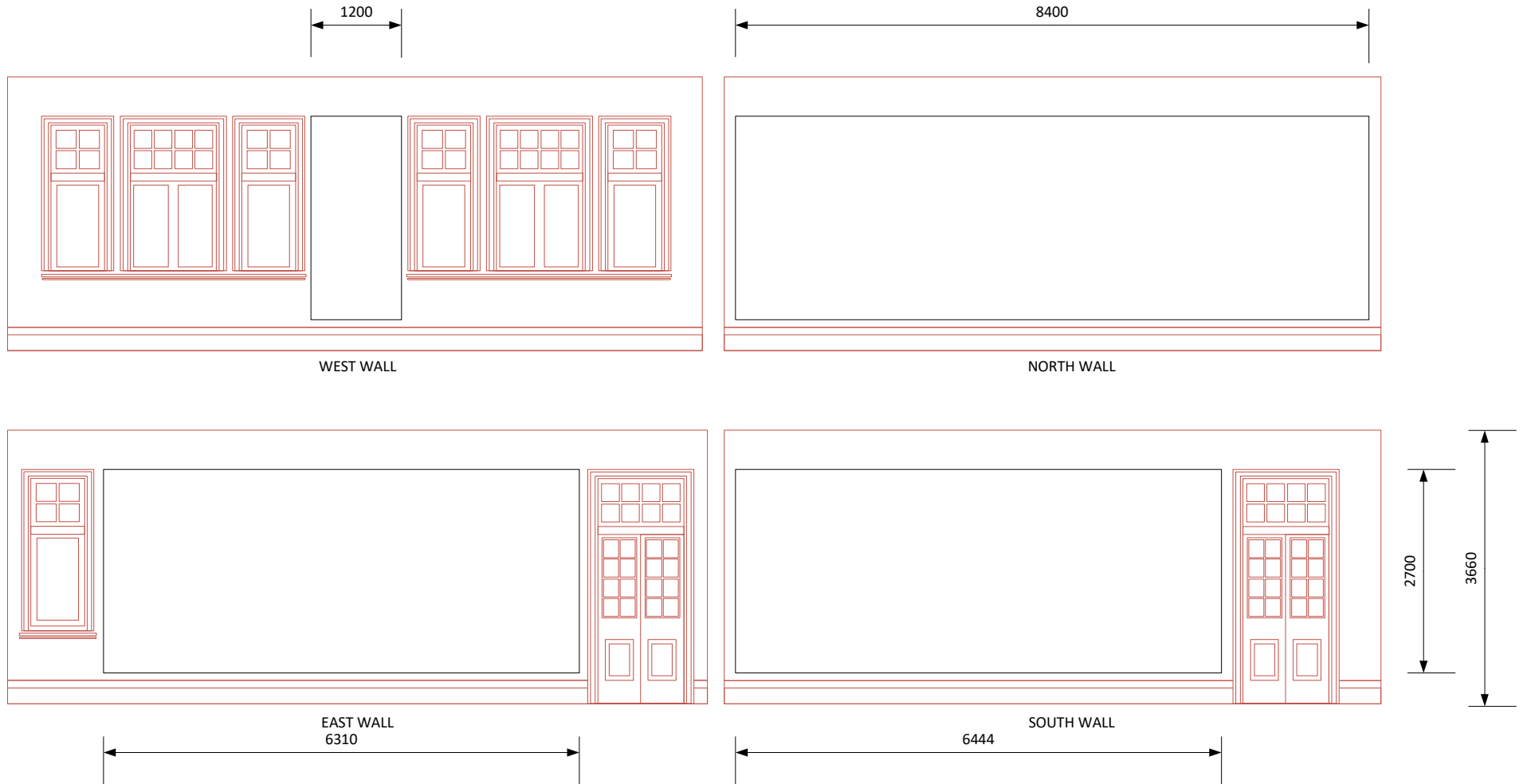


8.68m

6.31m

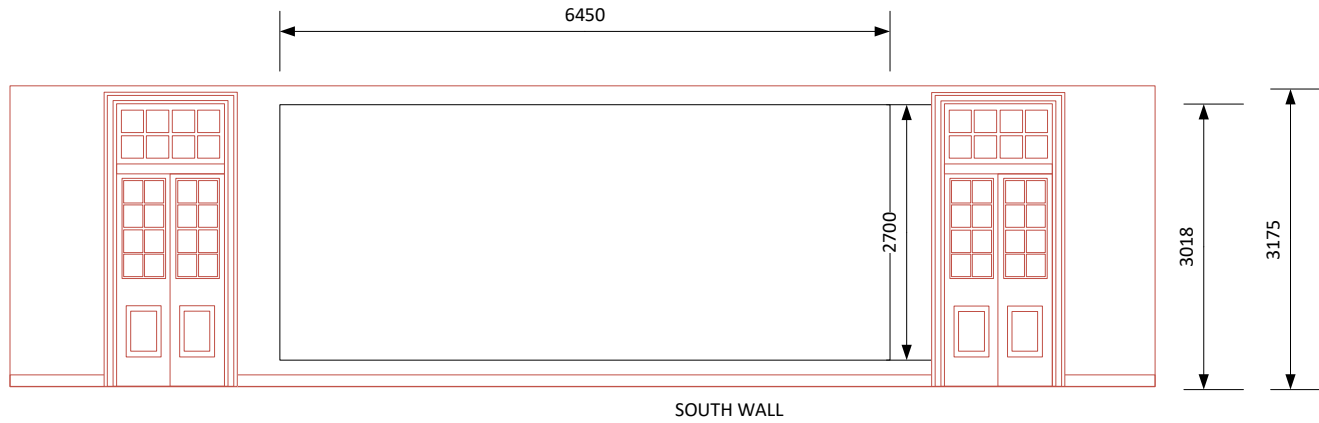
Doorway patio:
1070mm wide x
2270 high

Barrister's and Bailiff's Room Elevation

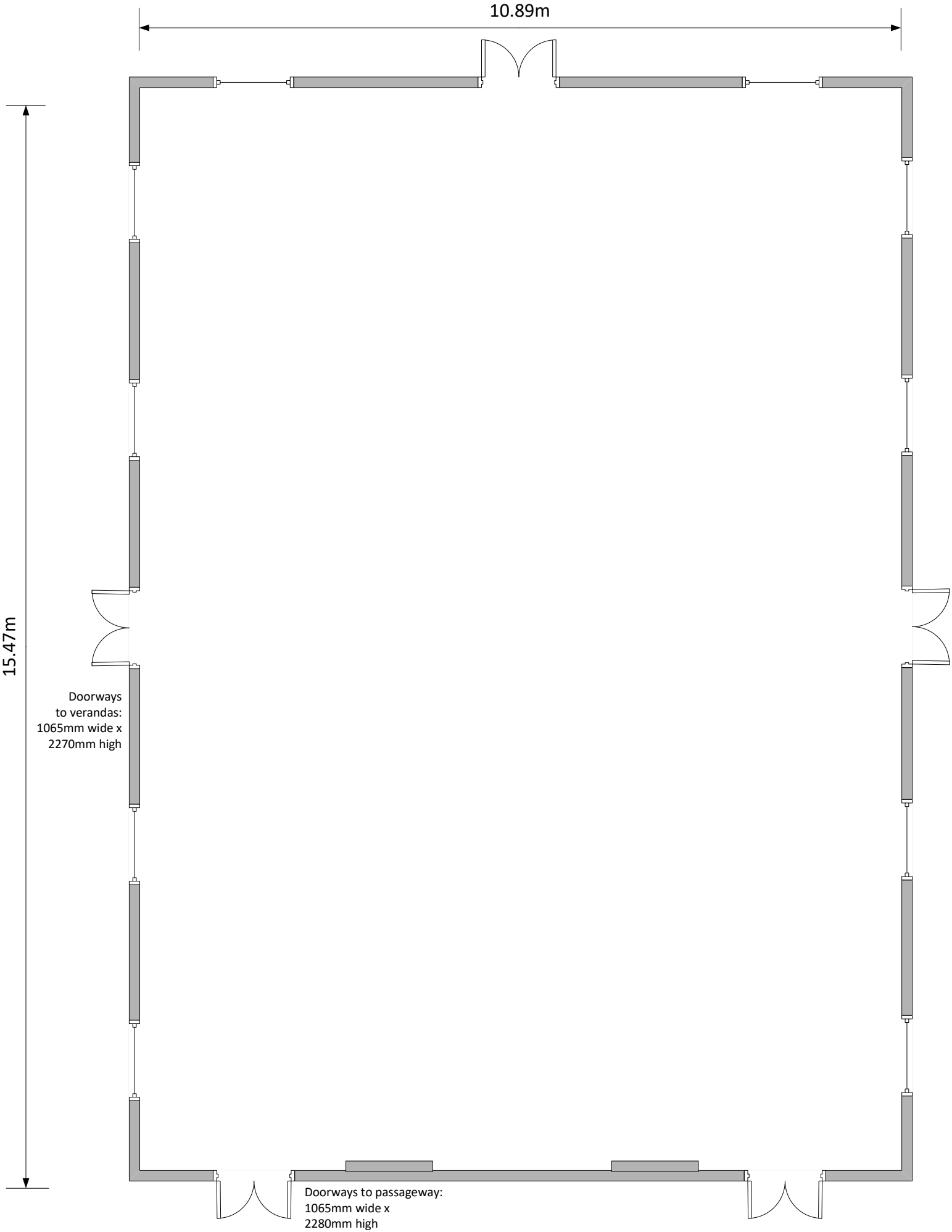


Total 22.354 linear metres

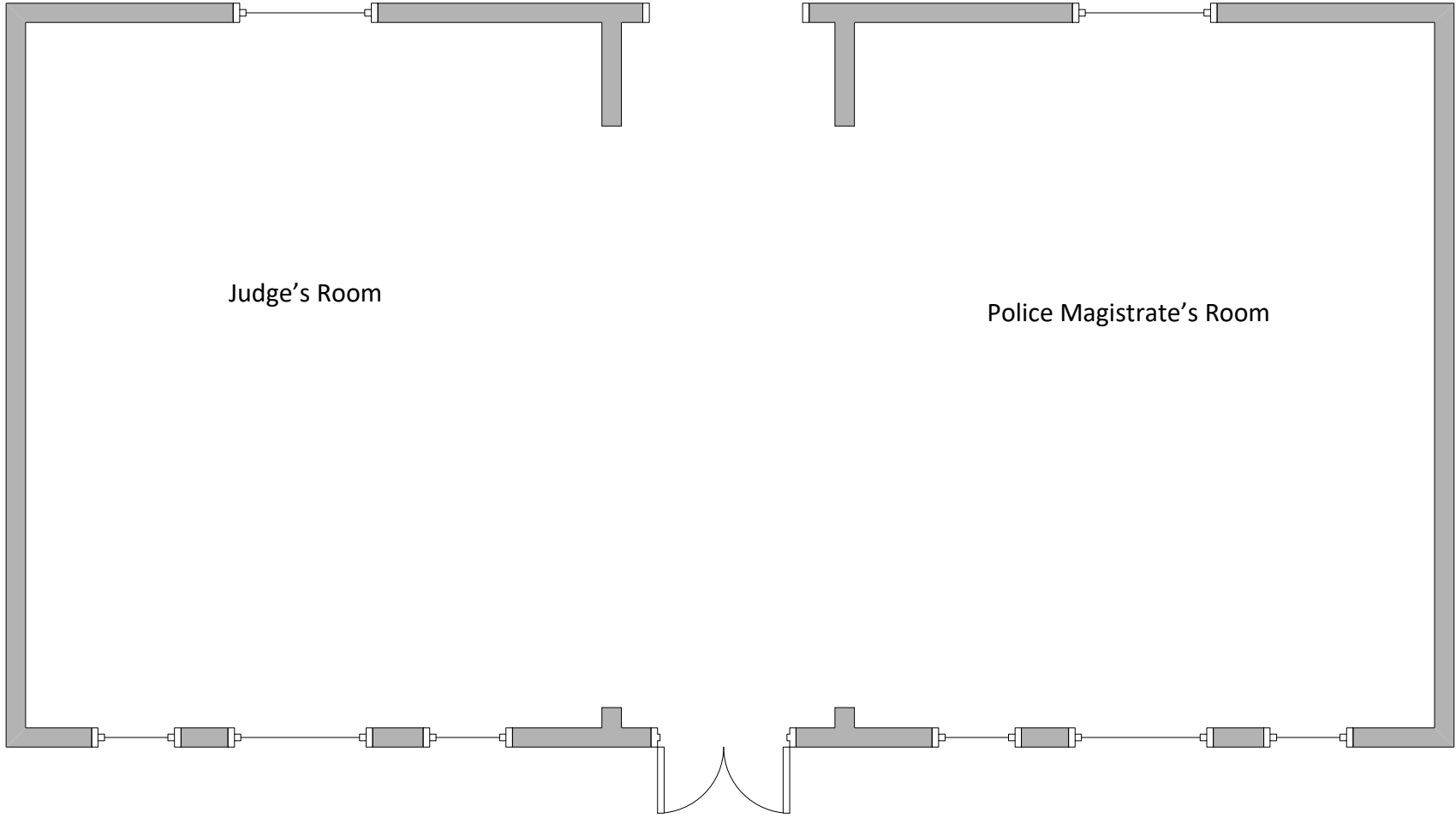
Passageway



Court Room



Lighting track and Timber
members 5.8m above floor



COVID Safe capacity as at
December 2020:

Court Room	88
Barristers	42
Clerks	42
Judge & Magistrates	30
Hallway	20
North Veranda	32
South Veranda	32

Total for venue **286**

A
4



Frames:

Sheet Size

Large 954 x 715mm

Small 509 x 407mm

Mayors' 505 x 349mm

Frame size (outside edge)

Large 1023 x 783 x 17mm

Small 580 x 476 x 17mm