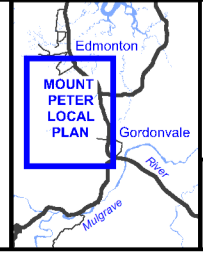


**LOCAL PLAN LEGEND**

- Local Plan boundary
- Major road
- Future major road
- Connector road
- Future connection
- Precincts districts
- Initial development area

Disclaimer:  
 While every care is taken to ensure the accuracy of this map, Cairns Regional Council makes no representations or warranties about its accuracy, reliability, completeness or suitability for any particular purpose and disclaims all responsibility and all liability (including without limitation, liability in negligence) for all expenses, losses, damage (including indirect or consequential damage) and costs which might incur as a result of the data being inaccurate or incomplete in any way and for any reason.  
 © Copyright Cairns Regional Council 2016

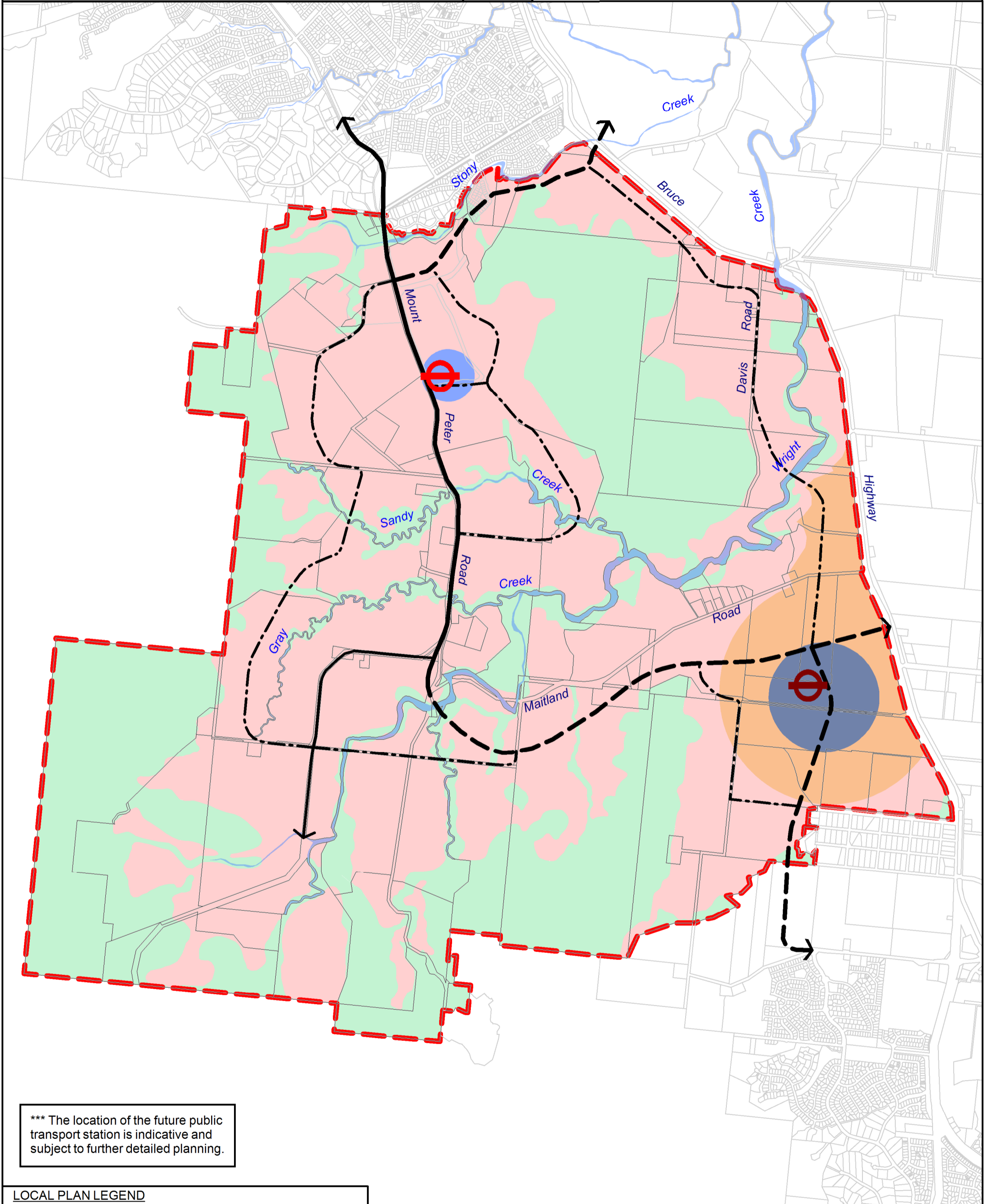
Cadastral Disclaimer:  
 Despite Department of Environment & Resource Management (DERM)'s best efforts, DERM makes no representations or warranties in relation to the information and to the extent permitted by law, excludes or limit all warranties relating to correctness, accuracy, reliability, completeness or currency and all liability for any direct, indirect and consequential costs, losses, damages and expenses incurred in any way (including but not limited to that arising from negligence) in connection with any use of or reliance on the information.  
 © The State of Queensland - Dept of Environment & Resource Management (DERM) 2016



0 625 1,250  
 Metres  
 Scale - 1:25,000 (@ A3 size)

↑  
 N

Date: 01/03/2016  
 Map Number: **LPM-010**

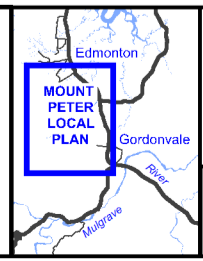


\*\*\* The location of the future public transport station is indicative and subject to further detailed planning.

LOCAL PLAN LEGEND	
	Local Plan boundary
	Major road
	Future major road
	Connector road
	Future connection
	Cooper Road future public transport station ***
	Maitland Road future public transport station ***
	Maitland Road South Activity Centre Core
	Maitland Road South Activity Centre Frame
	Cooper Road Activity Centre
	Future urban communities
	Conservation / Open space

Disclaimer: While every care is taken to ensure the accuracy of this map, Cairns Regional Council makes no representations or warranties about its accuracy, reliability, completeness or suitability for any particular purpose and disclaims all responsibility and all liability (including without limitation, liability in negligence) for all expenses, losses, damage (including indirect or consequential damage) and costs which might incur as a result of the data being inaccurate or incomplete in any way and for any reason.  
 © Copyright Cairns Regional Council 2016

Cadastral Disclaimer: Despite Department of Environment & Resource Management (DERM)'s best efforts, DERM makes no representations or warranties in relation to the information and to the extent permitted by law, excludes or limit all warranties relating to correctness, accuracy, reliability, completeness or currency and all liability for any direct, indirect and consequential costs, losses, damages and expenses incurred in any way (including but not limited to that arising from negligence) in connection with any use of or reliance on the information.  
 © The State of Queensland - Dept of Environment & Resource Management (DERM) 2016



0 625 1,250  
 Metres  
 Scale - 1:25,000 (@ A3 size)

↑  
 N

Date  
 01/03/2016

Map Number: **LPM-011**