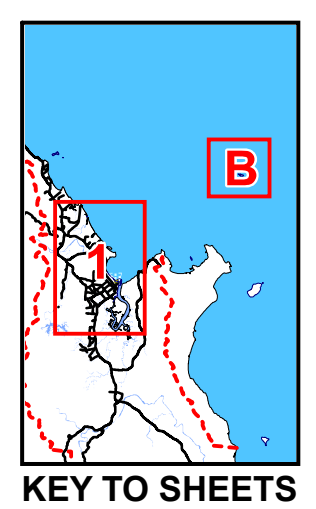


LEGEND

- Cairns Regional Council Boundary
- Property Boundary
- Strategic Port Land
- Cairns Airport Land

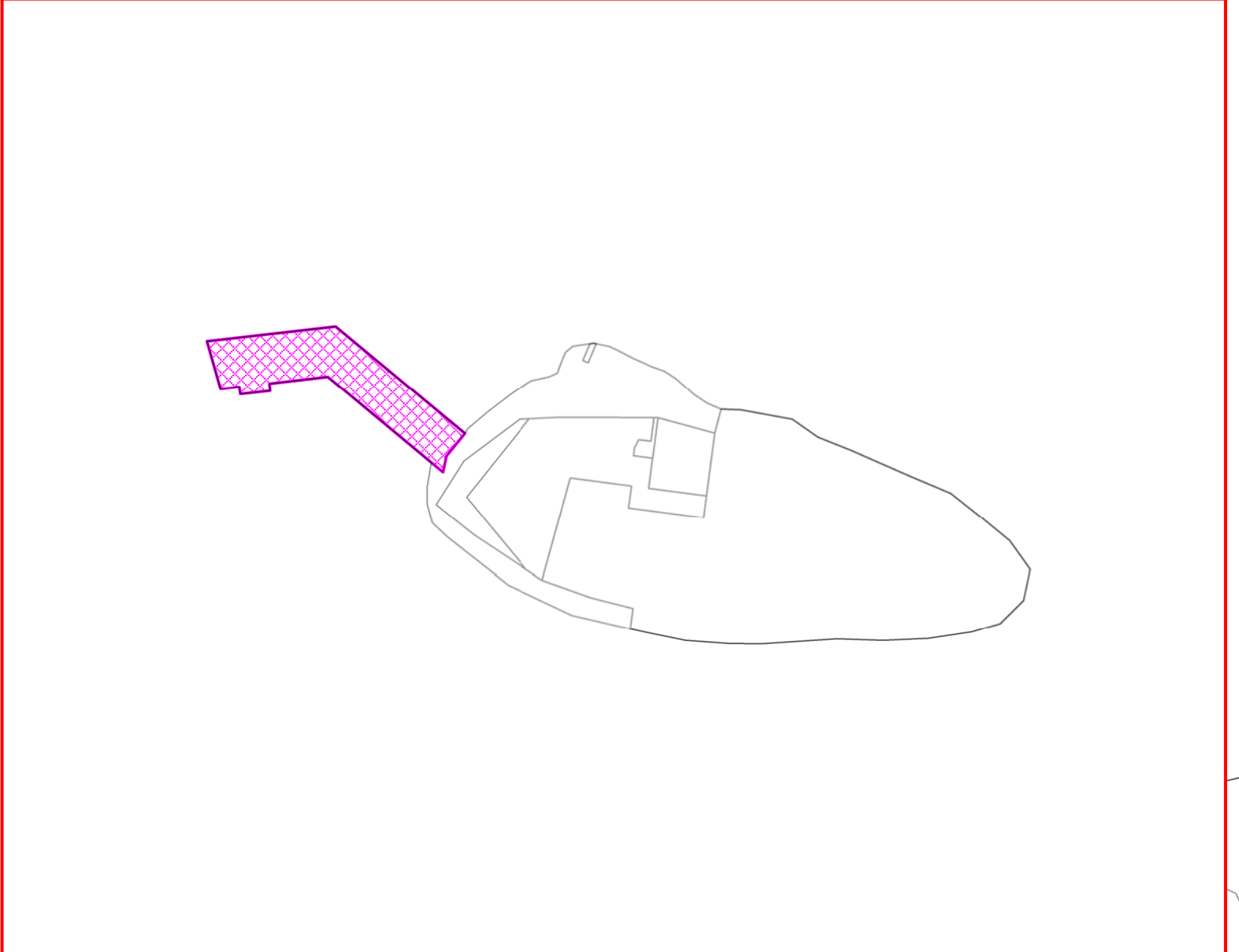
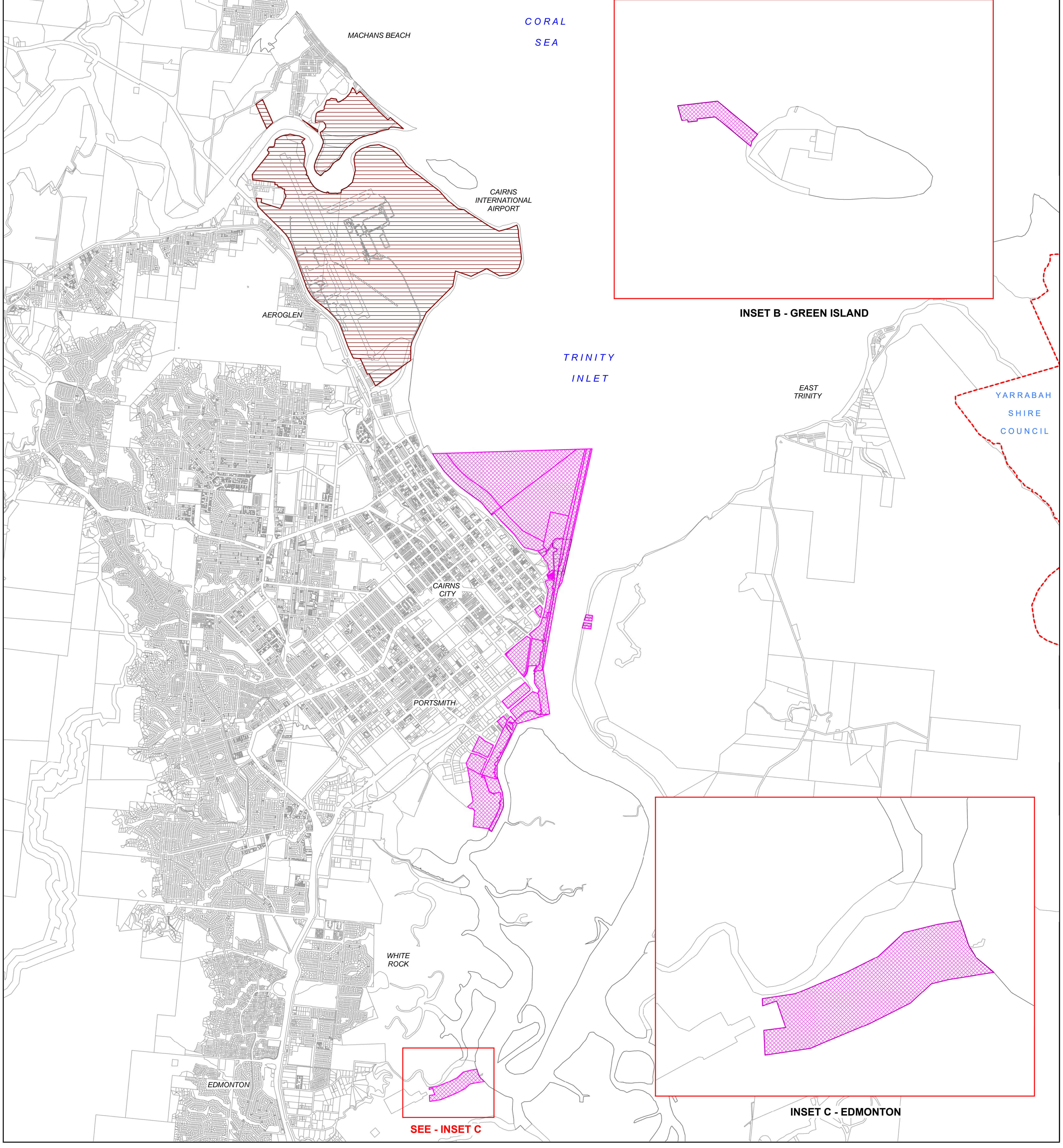


Disclaimer:
 While every care is taken to ensure the accuracy of this map, Cairns Regional Council makes no representations or warranties about its accuracy, reliability, completeness or suitability for any particular purpose and disclaims all responsibility and all liability (including without limitation, liability in negligence) for all expenses, losses, damage (including indirect or consequential damage) and costs which might incur as a result of the data being inaccurate or incomplete in any way and for any reason.
 ©Copyright Cairns Regional Council 2020

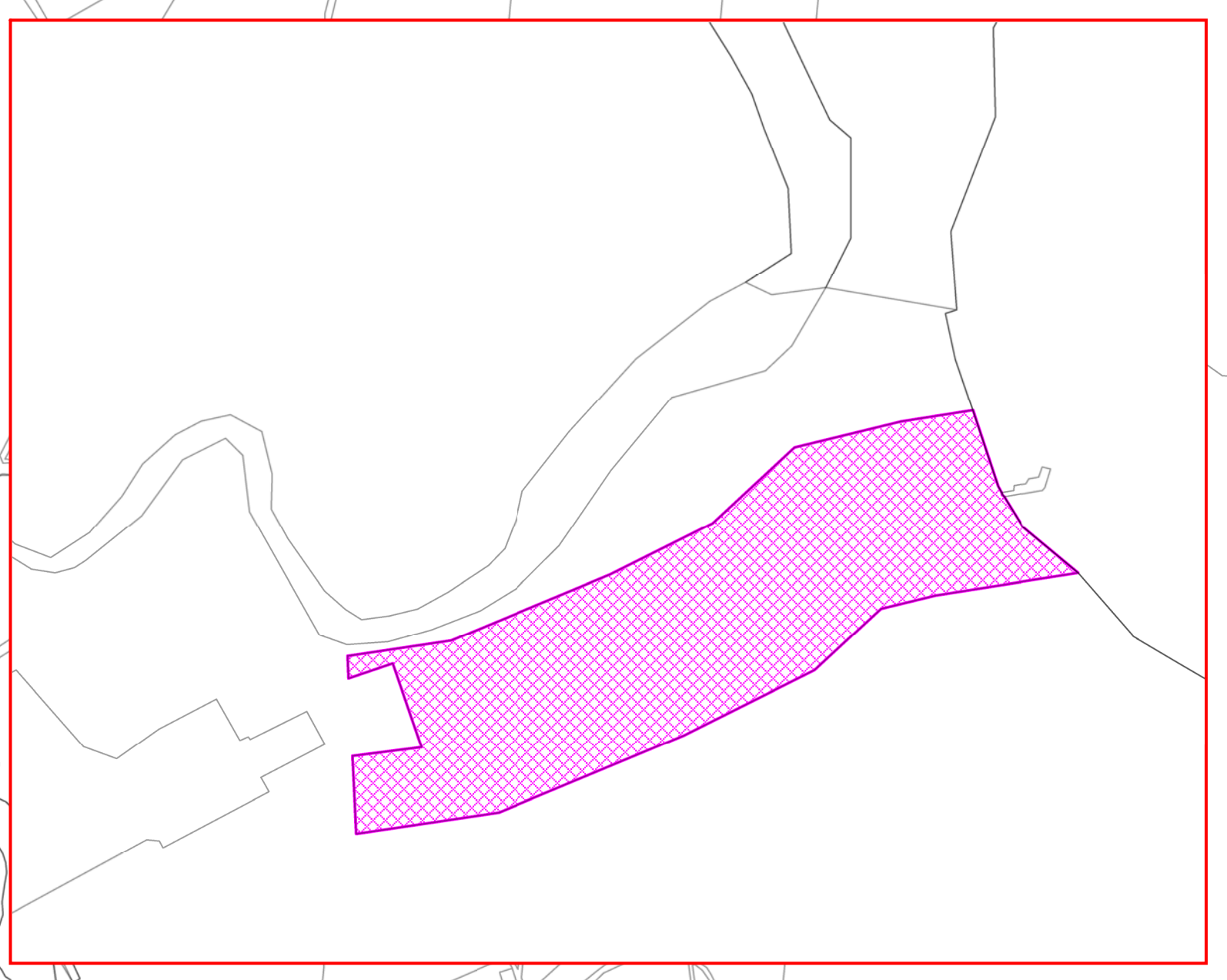
Cadastral Disclaimer:
 Despite best efforts, the Department of Natural Resources, Mines and Energy (DNRM) makes no representations or warranties in relation to the information and to the extent permitted by law, excludes or limit all warranties relating to correctness, accuracy, reliability, completeness or currency and all liability for any direct, indirect and consequential costs, losses, damages and expenses incurred in anyway (including but not limited to that arising from negligence) in connection with any use of or reliance on the information.
 ©The State of Queensland - Department of Natural Resources, Mines and Energy (DNRM) 2020



INSET A - YORKEYS KNOB



INSET B - GREEN ISLAND



INSET C - EDMONTON

SEE -
 INSET A

SEE -
 INSET C

YORKEYS KNOB

MACHANS BEACH

CORAL
 SEA

CAIRNS
 INTERNATIONAL
 AIRPORT

AEROGLEN

TRINITY
 INLET

EAST
 TRINITY

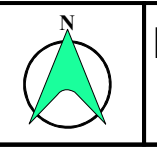
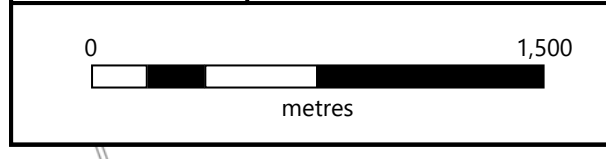
YARRABAH
 SHIRE
 COUNCIL

CAIRNS
 CITY

PORTSMITH

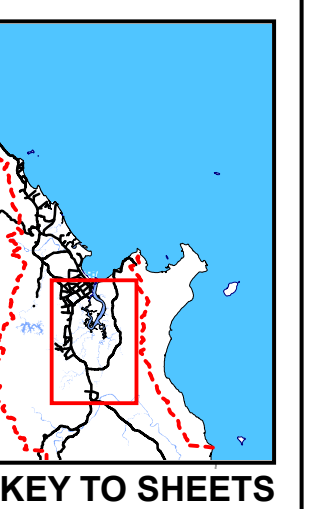
WHITE
 ROCK

EDMONTON



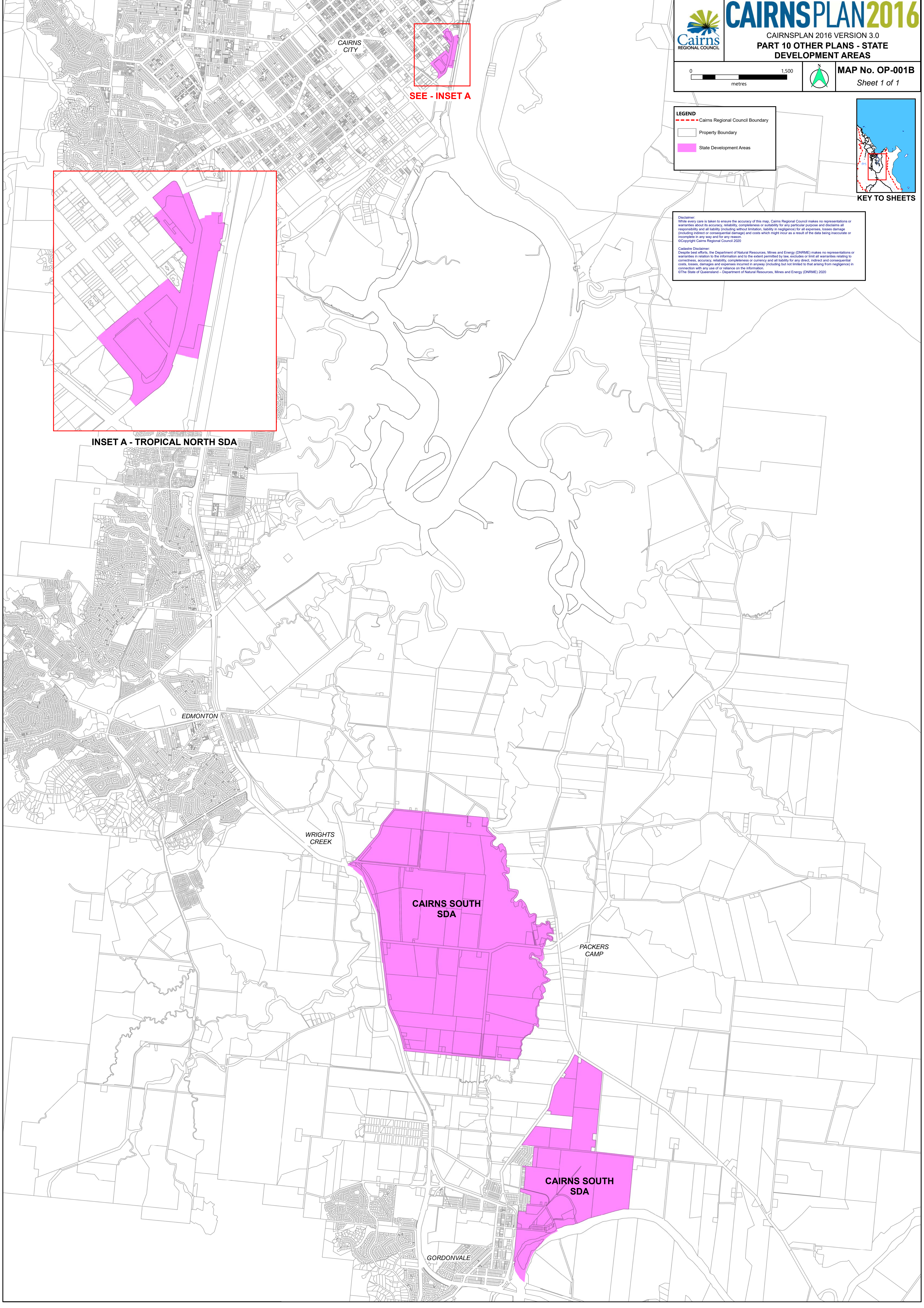
LEGEND

- - Cairns Regional Council Boundary
- Property Boundary
- State Development Areas



Disclaimer:
While every care is taken to ensure the accuracy of this map, Cairns Regional Council makes no representations or warranties about its accuracy, reliability, completeness or suitability for any particular purpose and disclaims all responsibility and all liability (including without limitation, liability in negligence) for all expenses, losses, damage (including indirect or consequential damage) and costs which might incur as a result of the data being inaccurate or incomplete in any way and for any reason.
©Copyright Cairns Regional Council 2020

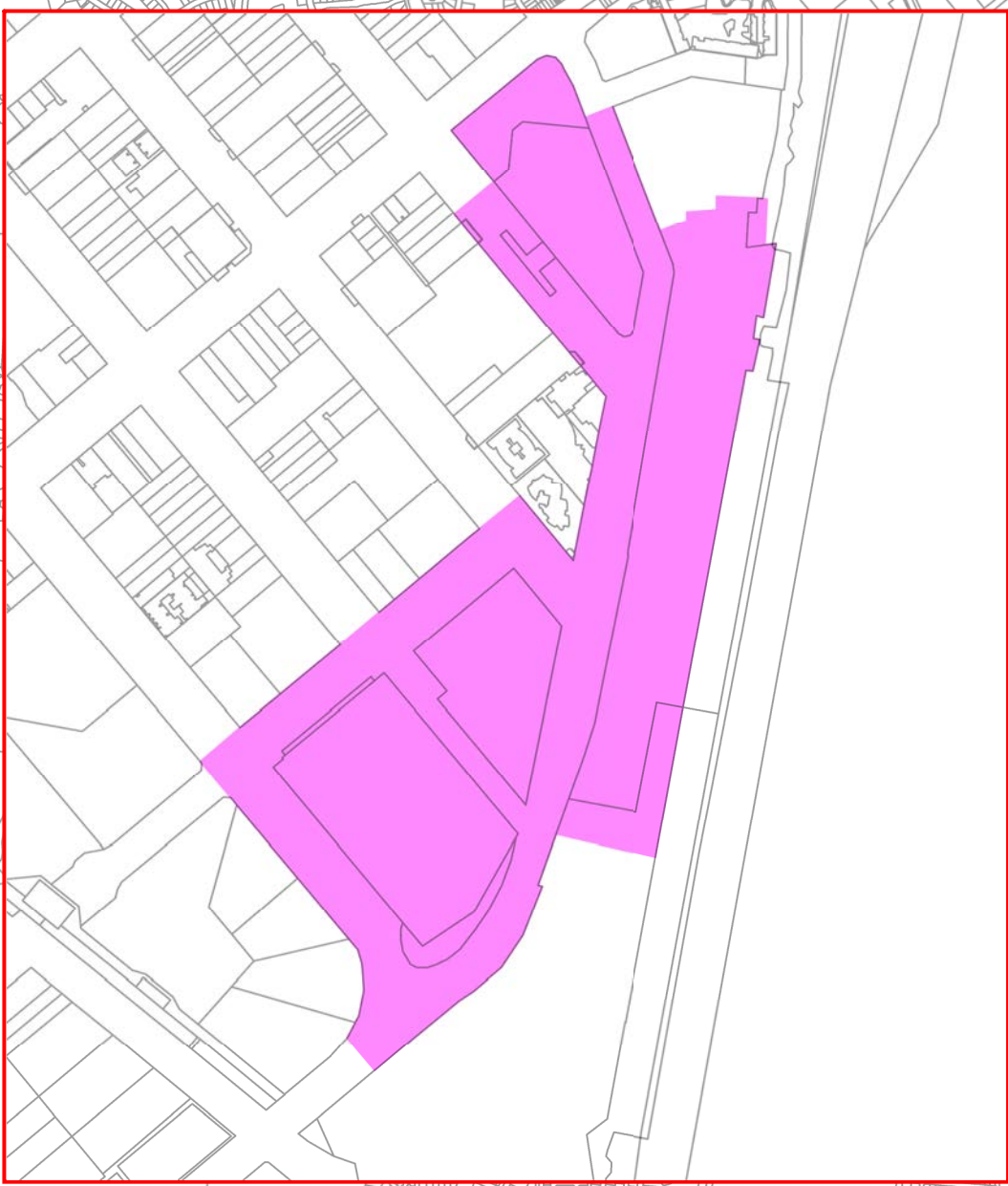
Cadastral Disclaimer:
Despite best efforts, the Department of Natural Resources, Mines and Energy (DNRM) makes no representations or warranties in relation to the information and to the extent permitted by law, excludes or limits all warranties relating to correctness, accuracy, reliability, completeness or currency and all liability for any direct, indirect and consequential costs, losses, damages and expenses incurred in anyway (including but not limited to that arising from negligence) in connection with any use of or reliance on the information.
©The State of Queensland - Department of Natural Resources, Mines and Energy (DNRM) 2020



CAIRNS CITY



SEE - INSET A



INSET A - TROPICAL NORTH SDA

EDMONTON

WRIGHTS CREEK

CAIRNS SOUTH SDA

PACKERS CAMP

CAIRNS SOUTH SDA

GORDONVALE



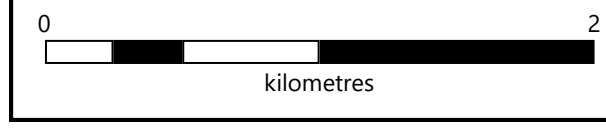
CAIRNSPLAN 2016

CAIRNSPLAN 2016 VERSION 3.0

PART 10 OTHER PLANS - WET TROPICS OF QUEENSLAND WORLD HERITAGE AREA

Disclaimer:
While every care is taken to ensure the accuracy of this map, Cairns Regional Council makes no representations or warranties about its accuracy, reliability, completeness or suitability for any particular purpose and disclaims all responsibility and all liability (including without limitation, liability in negligence) for all expenses, losses, damages (including indirect or consequential damage) and costs which might incur as a result of the data being inaccurate or incomplete in any way and for any reason.
©Copyright Cairns Regional Council 2020

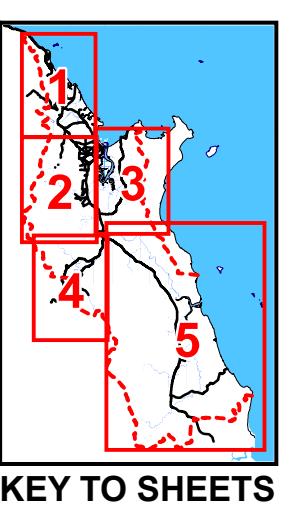
Cadastral Disclaimer:
Despite best efforts, the Department of Natural Resources, Mines and Energy (DNRM) makes no representations or warranties in relation to the information and to the extent permitted by law, excludes or limits all warranties relating to correctness, accuracy, reliability, completeness or currency and all liability for any direct, indirect and consequential costs, losses, damages and expenses incurred in anyway (including but not limited to that arising from negligence) in connection with any use of or reliance on the information.
©The State of Queensland - Department of Natural Resources, Mines and Energy (DNRM) 2020



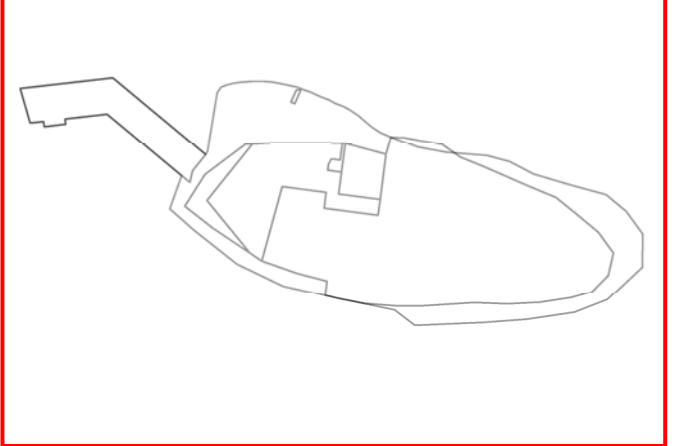
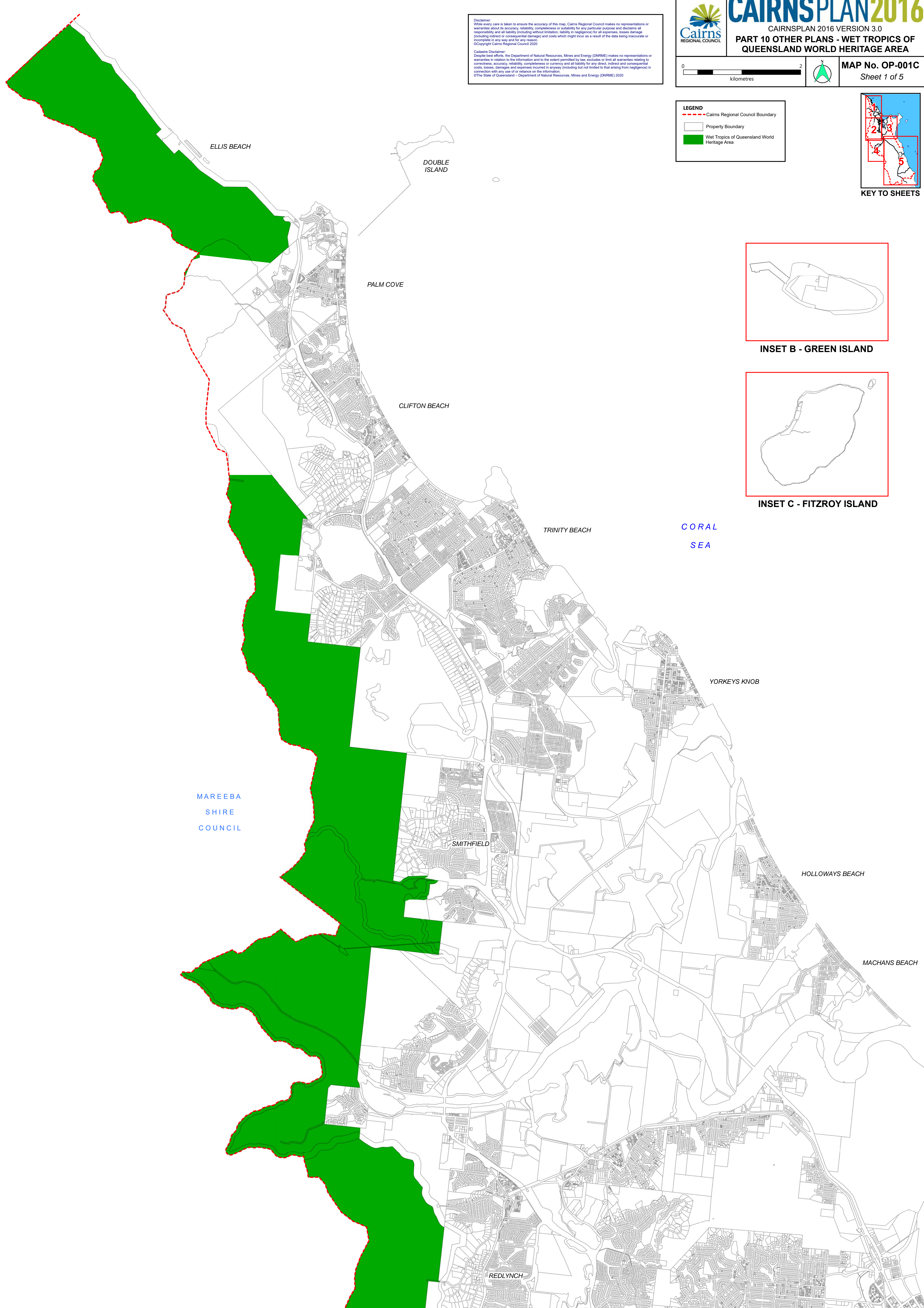
MAP No. OP-001C
Sheet 1 of 5

LEGEND

- Cairns Regional Council Boundary
- Property Boundary
- Wet Tropics of Queensland World Heritage Area



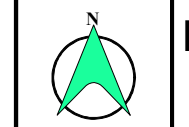
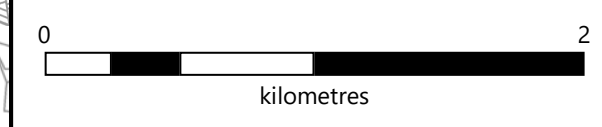
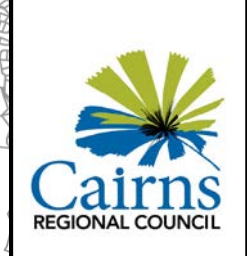
KEY TO SHEETS



INSET B - GREEN ISLAND

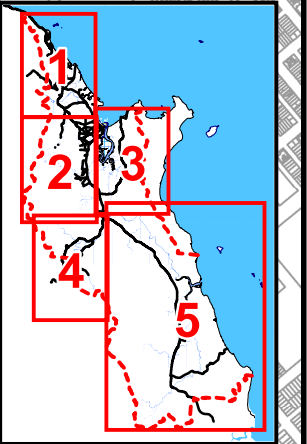


INSET C - FITZROY ISLAND



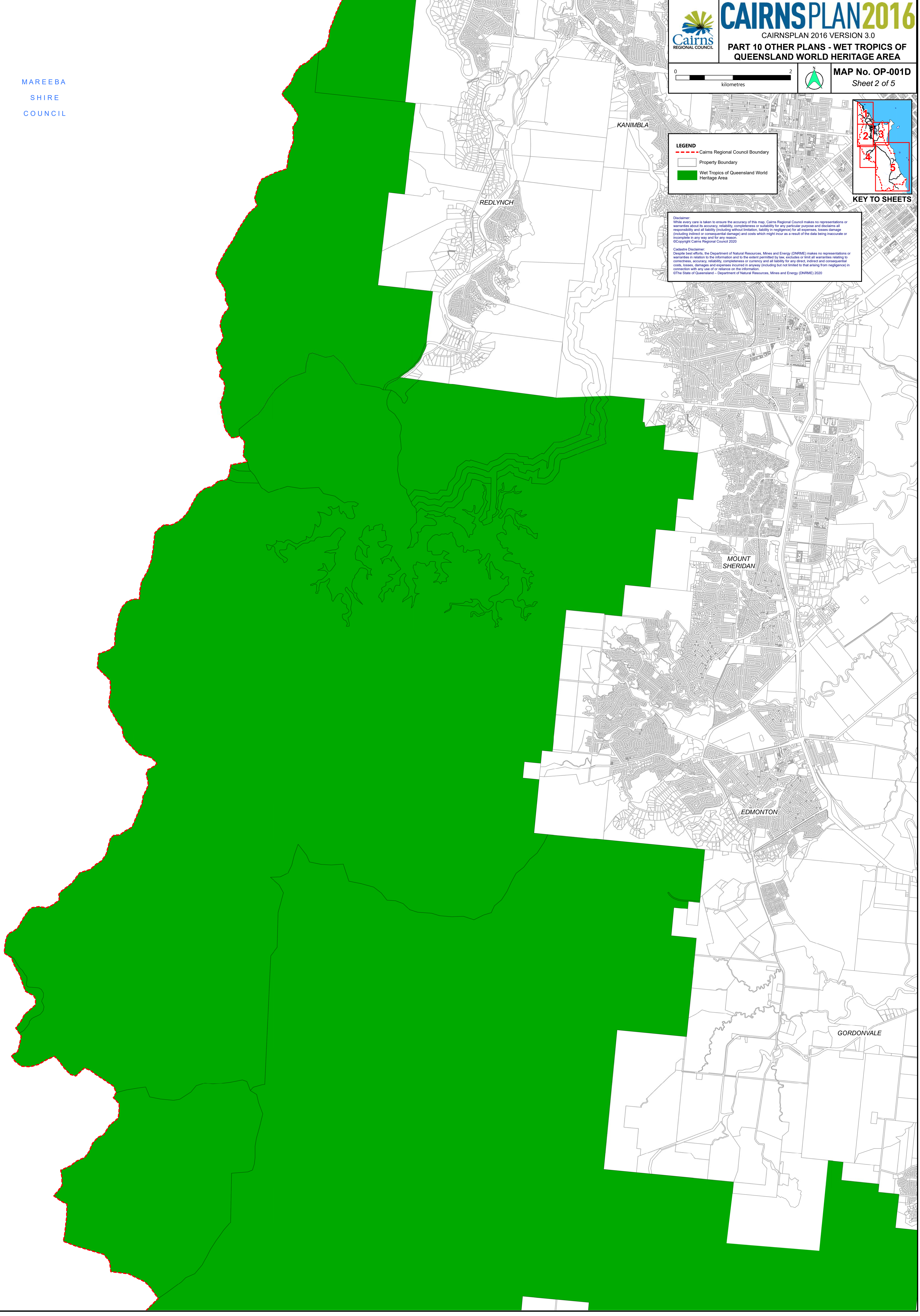
LEGEND

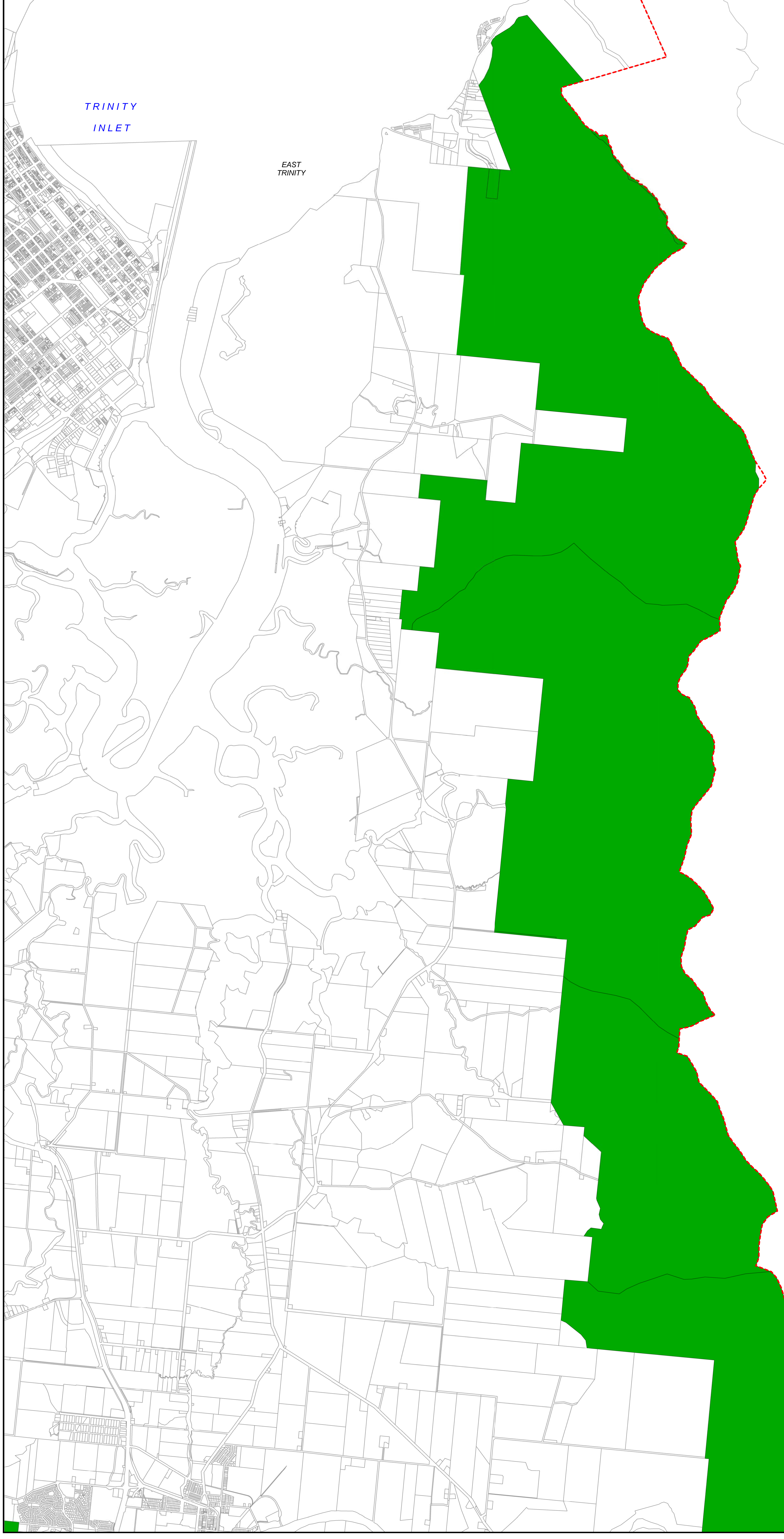
- Cairns Regional Council Boundary
- Property Boundary
- Wet Tropics of Queensland World Heritage Area






Disclaimer:
While every care is taken to ensure the accuracy of this map, Cairns Regional Council makes no representations or warranties about its accuracy, reliability, completeness or suitability for any particular purpose and disclaims all responsibility and all liability (including without limitation, liability in negligence) for all expenses, losses, damages (including indirect or consequential damages) and costs which might incur as a result of the data being inaccurate or incomplete in any way and for any reason.
©Copyright Cairns Regional Council 2020

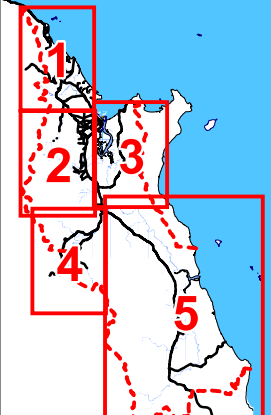
Cadastral Disclaimer:
Despite best efforts, the Department of Natural Resources, Mines and Energy (DNRM) makes no representations or warranties in relation to the information and to the extent permitted by law, excludes or limit all warranties relating to correctness, accuracy, reliability, completeness or currency and all liability for any direct, indirect and consequential costs, losses, damages and expenses incurred in anyway (including but not limited to that arising from negligence) in connection with any use of or reliance on the information.
©The State of Queensland - Department of Natural Resources, Mines and Energy (DNRM) 2020





LEGEND

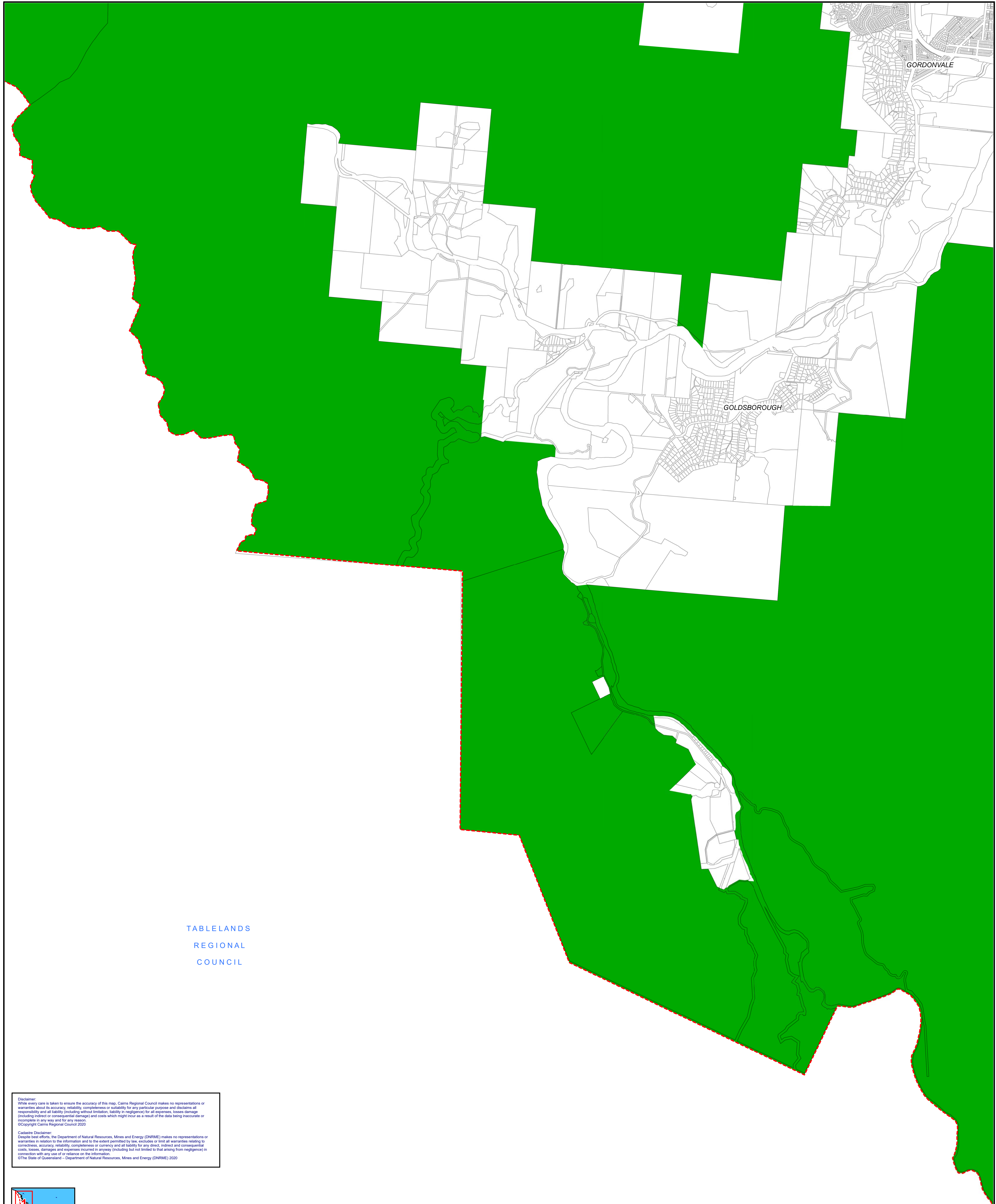
-  Cairns Regional Council Boundary
-  Property Boundary
-  Wet Tropics of Queensland World Heritage Area



KEY TO SHEETS

Disclaimer:
 While every care is taken to ensure the accuracy of this map, Cairns Regional Council makes no representations or warranties about its accuracy, reliability, completeness or suitability for any particular purpose and disclaims all responsibility and all liability (including without limitation, liability in negligence) for all expenses, losses, damage (including indirect or consequential damage) and costs which might incur as a result of the data being inaccurate or incomplete in any way and for any reason.
 ©Copyright Cairns Regional Council 2020

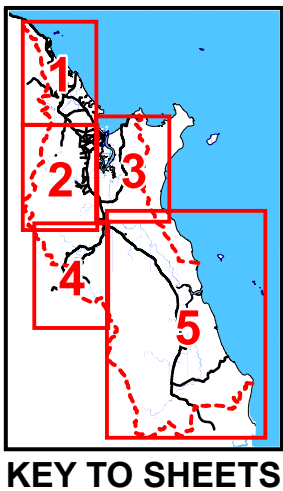
Cadastral Disclaimer:
 Despite best efforts, the Department of Natural Resources, Mines and Energy (DNRM) makes no representations or warranties in relation to the information and to the extent permitted by law, excludes or limits all warranties relating to correctness, accuracy, reliability, completeness or currency and all liability for any direct, indirect and consequential costs, losses, damages and expenses incurred in anyway (including but not limited to that arising from negligence) in connection with any use of or reliance on the information.
 ©The State of Queensland - Department of Natural Resources, Mines and Energy (DNRM) 2020



TABLELANDS
REGIONAL
COUNCIL

Disclaimer:
While every care is taken to ensure the accuracy of this map, Cairns Regional Council makes no representations or warranties about its accuracy, reliability, completeness or suitability for any particular purpose and disclaims all responsibility and all liability (including without limitation, liability in negligence) for all expenses, losses, damage (including indirect or consequential damage) and costs which might incur as a result of the data being inaccurate or incomplete in any way and for any reason.
©Copyright Cairns Regional Council 2020

Disclaimer:
Despite best efforts, the Department of Natural Resources, Mines and Energy (DNRM) makes no representations or warranties in relation to the information and to the extent permitted by law, excludes or limits all warranties relating to correctness, accuracy, reliability, completeness or currency and all liability for any direct, indirect and consequential costs, losses, damages and expenses incurred in anyway (including but not limited to that arising from negligence) in connection with any use of or reliance on the information.
©The State of Queensland – Department of Natural Resources, Mines and Energy (DNRM) 2020



KEY TO SHEETS

| LEGEND | |
|--------|---|
| | Cairns Regional Council Boundary |
| | Property Boundary |
| | Wet Tropics of Queensland World Heritage Area |

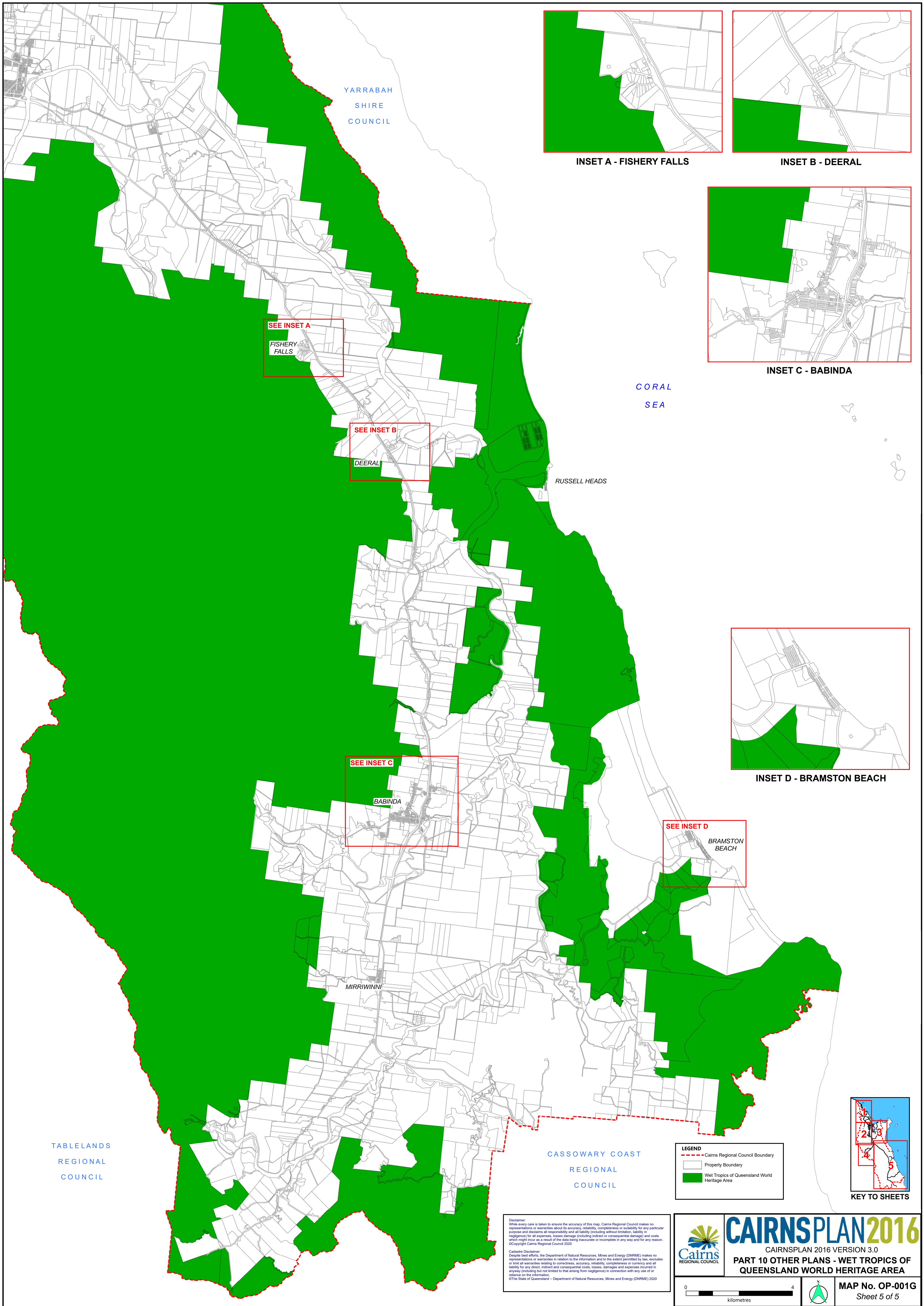
CAIRNSPLAN2016

CAIRNSPLAN 2016 VERSION 3.0

PART 10 OTHER PLANS - WET TROPICS OF QUEENSLAND WORLD HERITAGE AREA

0 2
kilometres

MAP No. OP-001F
Sheet 4 of 5



YARRABAH
SHIRE
COUNCIL

CORAL
SEA

CASSOWARY COAST
REGIONAL
COUNCIL

TABLELANDS
REGIONAL
COUNCIL



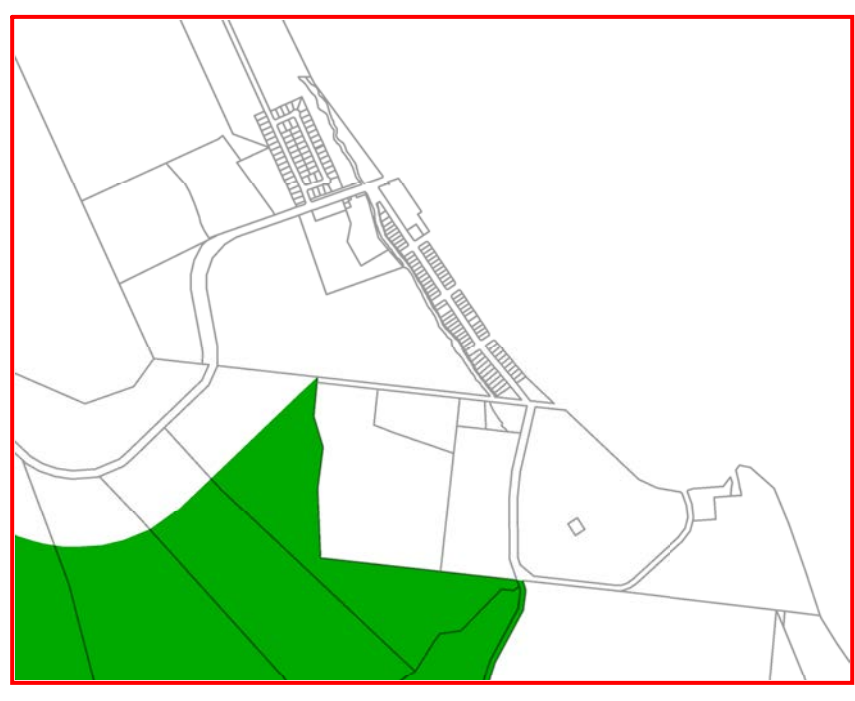
INSET A - FISHERY FALLS



INSET B - DEERAL



INSET C - BABINDA



INSET D - BRAMSTON BEACH

SEE INSET A
FISHERY
FALLS

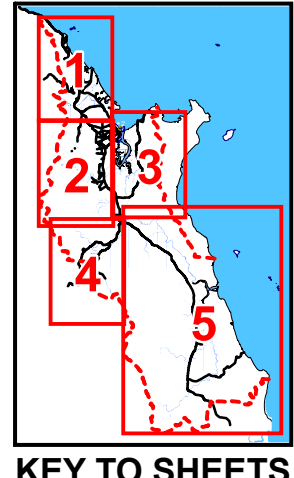
SEE INSET B
DEERAL

SEE INSET C
BABINDA

SEE INSET D
BRAMSTON
BEACH

LEGEND

- Cairns Regional Council Boundary
- Property Boundary
- Wet Tropics of Queensland World Heritage Area



Disclaimer: While every care is taken to ensure the accuracy of this map, Cairns Regional Council makes no representations or warranties about its accuracy, reliability, completeness or suitability for any particular purpose and disclaims all responsibility and all liability (including without limitation, liability in negligence) for all expenses, losses, damage (including indirect or consequential damage) and costs which might incur as a result of the data being inaccurate or incomplete in any way and for any reason. ©Copyright Cairns Regional Council 2020.

Cadastral Disclaimer: The Department of Natural Resources, Mines and Energy (DNRM) makes no representations or warranties relating to correctness, accuracy, reliability, completeness or currency and all liability for any direct, indirect and consequential costs, losses, damages and expenses incurred in anyway (including but not limited to that arising from negligence) in connection with any use of or reliance on the information. ©The State of Queensland - Department of Natural Resources, Mines and Energy (DNRM) 2020.

CAIRNSPLAN2016

CAIRNSPLAN 2016 VERSION 3.0

PART 10 OTHER PLANS - WET TROPICS OF QUEENSLAND WORLD HERITAGE AREA

0 4
kilometres

MAP No. OP-001G
Sheet 5 of 5