

SEE  
INSET A

ELLIS BEACH

DOUBLE  
ISLAND

PALM COVE

CLIFTON BEACH

TRINITY BEACH

CORAL  
SEA

YORKEYS KNOB

MAREEBA  
SHIRE  
COUNCIL

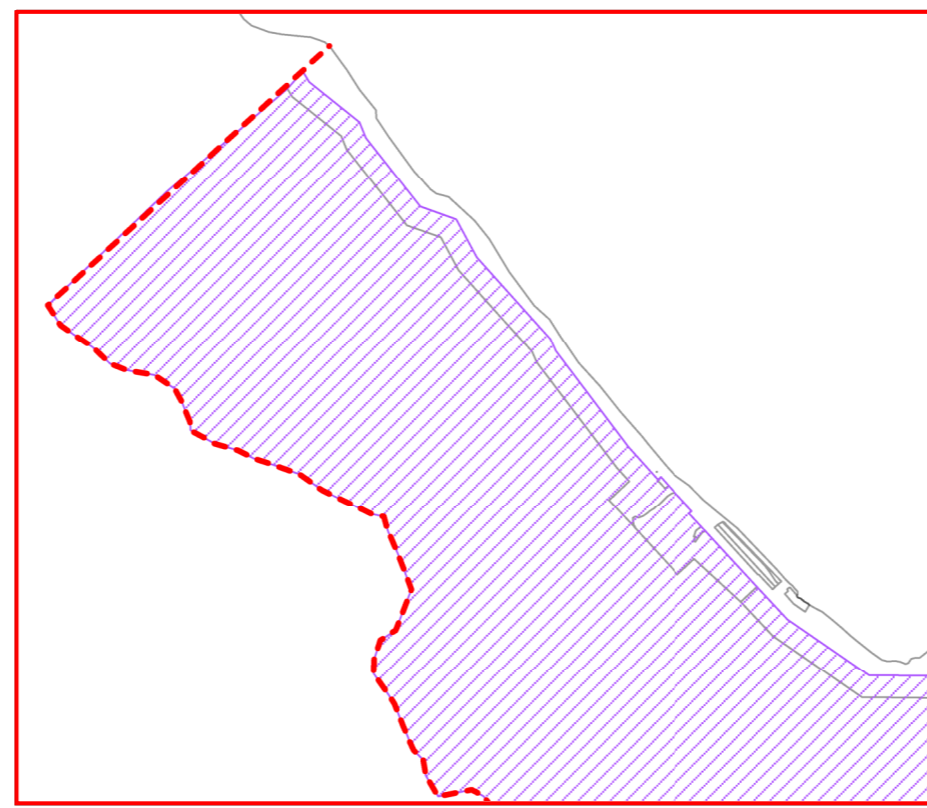
SMITHFIELD

HOLLOWAYS BEACH

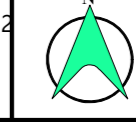
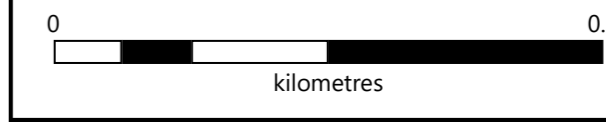
MACHANS BEACH

REDLYNCH

TRINITY  
INLET

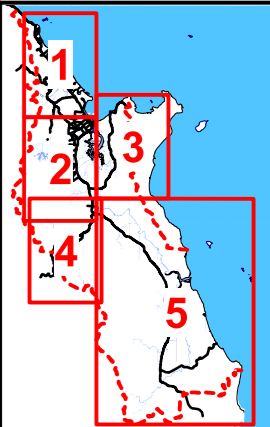


INSET A - ELLIS BEACH



**LEGEND**

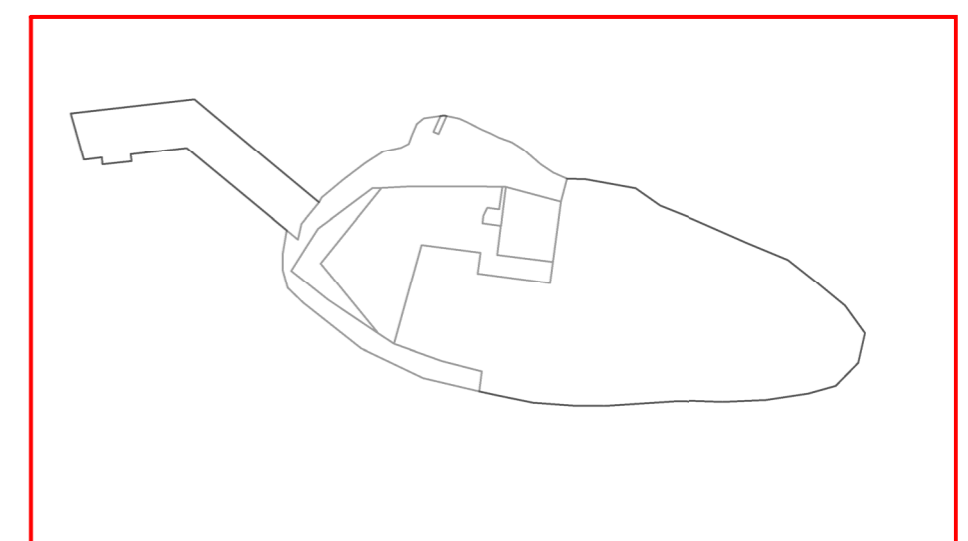
- - - Cairns Regional Council Boundary
- Property Boundary
- Hillslopes area



KEY TO SHEETS

**Disclaimer:**  
 While every care is taken to ensure the accuracy of this map, Cairns Regional Council makes no representations or warranties about its accuracy, reliability, completeness or suitability for any particular purpose and disclaims all responsibility and all liability (including without limitation, liability in negligence) for all expenses, losses, damages (including indirect or consequential damage) and costs which might occur as a result of the data being inaccurate or incomplete in any way and for any reason.  
 ©Copyright Cairns Regional Council 2020

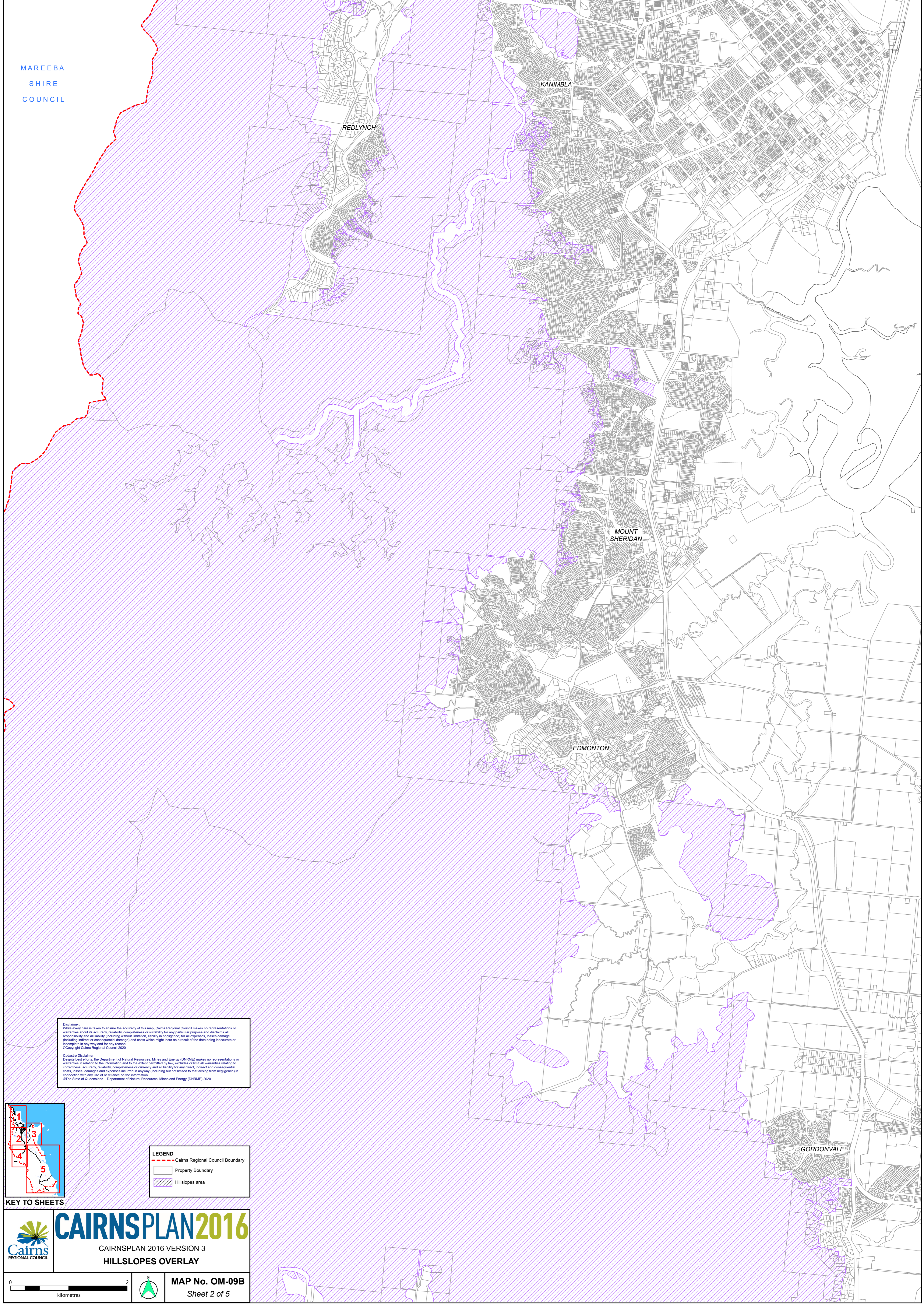
**Cadastral Disclaimer:**  
 Despite best efforts, the Department of Natural Resources, Mines and Energy (DNRM) makes no representations or warranties in relation to the information and to the extent permitted by law, excludes or limits all warranties relating to correctness, accuracy, reliability, completeness or currency and all liability for any direct, indirect and consequential costs, losses, damages and expenses incurred in any way (including but not limited to that arising from negligence) in connection with any use of or reliance on the information.  
 ©The State of Queensland - Department of Natural Resources, Mines and Energy (DNRM) 2020



INSET B - GREEN ISLAND

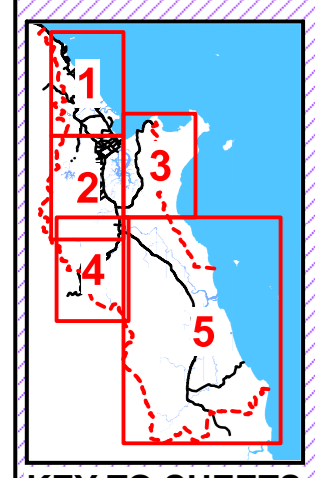


INSET C - FITZROY ISLAND



**Disclaimer:**  
While every care is taken to ensure the accuracy of this map, Cairns Regional Council makes no representations or warranties about its accuracy, reliability, completeness or suitability for any particular purpose and disclaims all responsibility and all liability (including without limitation, liability in negligence) for all expenses, losses, damage (including indirect or consequential damage) and costs which might incur as a result of the data being inaccurate or incomplete in any way and for any reason.  
©Copyright Cairns Regional Council 2020


**Cadastral Disclaimer:**  
Despite best efforts, the Department of Natural Resources, Mines and Energy (DNRM) makes no representations or warranties in relation to the information and to the extent permitted by law, excludes or limit all warranties relating to correctness, accuracy, reliability, completeness or currency and all liability for any direct, indirect and consequential costs, losses, damages and expenses incurred in anyway (including but not limited to that arising from negligence) in connection with any use of or reliance on the information.  
©The State of Queensland - Department of Natural Resources, Mines and Energy (DNRM) 2020




KEY TO SHEETS

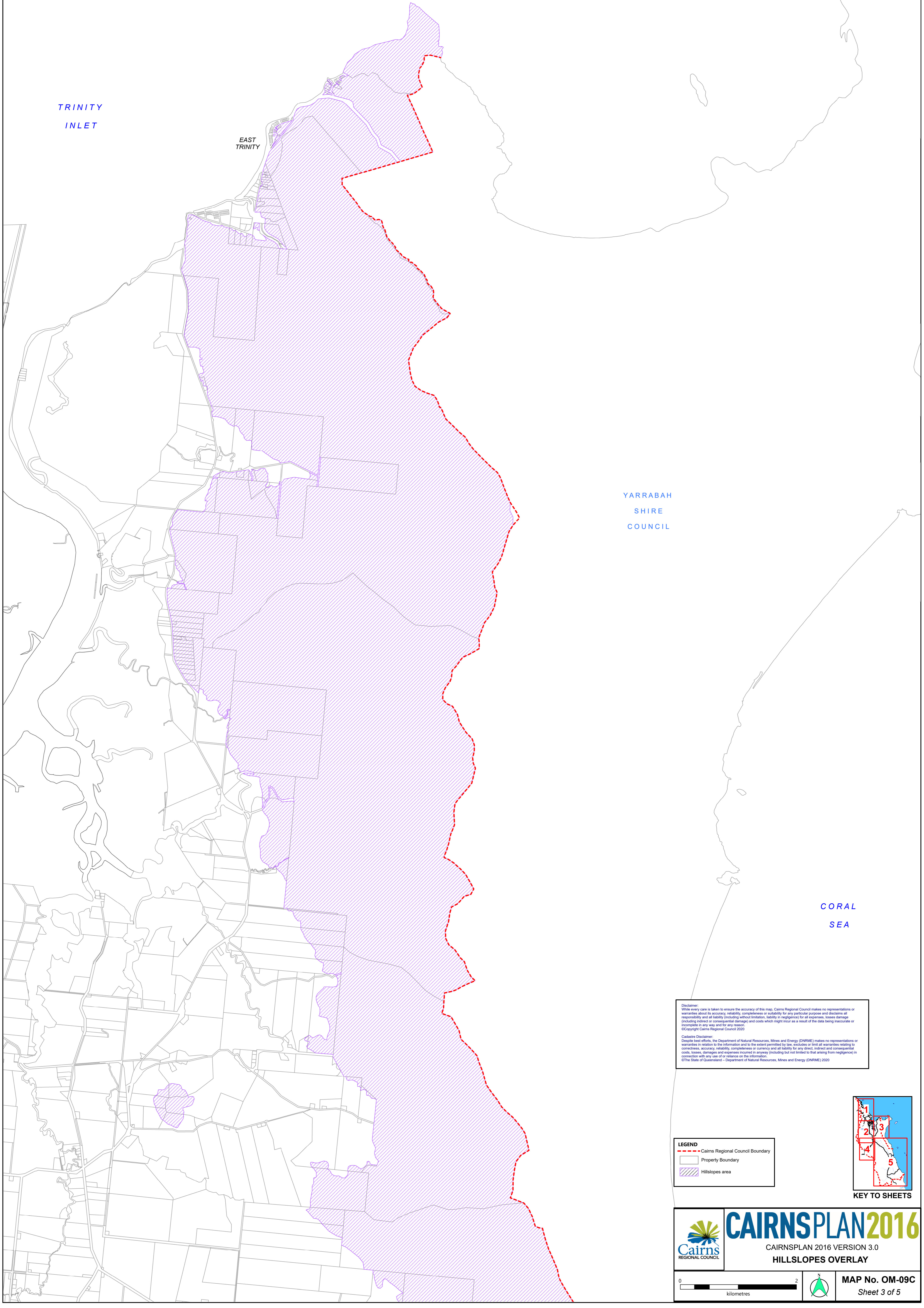
**LEGEND**

- Cairns Regional Council Boundary
- Property Boundary
- ▨ Hillslopes area

 **CAIRNSPLAN 2016**  
CAIRNSPLAN 2016 VERSION 3  
**HILLSLOPES OVERLAY**

0 2  
kilometres

 **MAP No. OM-09B**  
Sheet 2 of 5



TRINITY  
INLET

EAST  
TRINITY

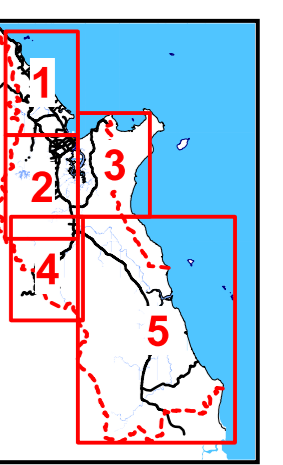
YARRABAH  
SHIRE  
COUNCIL

CORAL  
SEA

**Disclaimer:**  
While every care is taken to ensure the accuracy of this map, Cairns Regional Council makes no representations or warranties about its accuracy, reliability, completeness or suitability for any particular purpose and disclaims all responsibility and all liability (including without limitation, liability in negligence) for all expenses, losses, damage (including indirect or consequential damage) and costs which might incur as a result of the data being inaccurate or incomplete in any way and for any reason.  
©Copyright Cairns Regional Council 2020

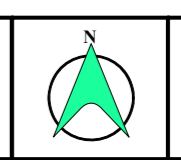
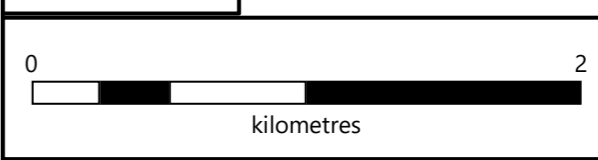
**Cadastral Disclaimer:**  
Despite best efforts, the Department of Natural Resources, Mines and Energy (DNRM) makes no representations or warranties in relation to the information and to the extent permitted by law, excludes or limits all warranties relating to correctness, accuracy, reliability, completeness or currency and all liability for any direct, indirect and consequential costs, losses, damages and expenses incurred in anyway (including but not limited to that arising from negligence) in connection with any use of or reliance on the information.  
©The State of Queensland - Department of Natural Resources, Mines and Energy (DNRM) 2020

**LEGEND**  
 - - - Cairns Regional Council Boundary  
 □ Property Boundary  
 ▨ Hillslopes area

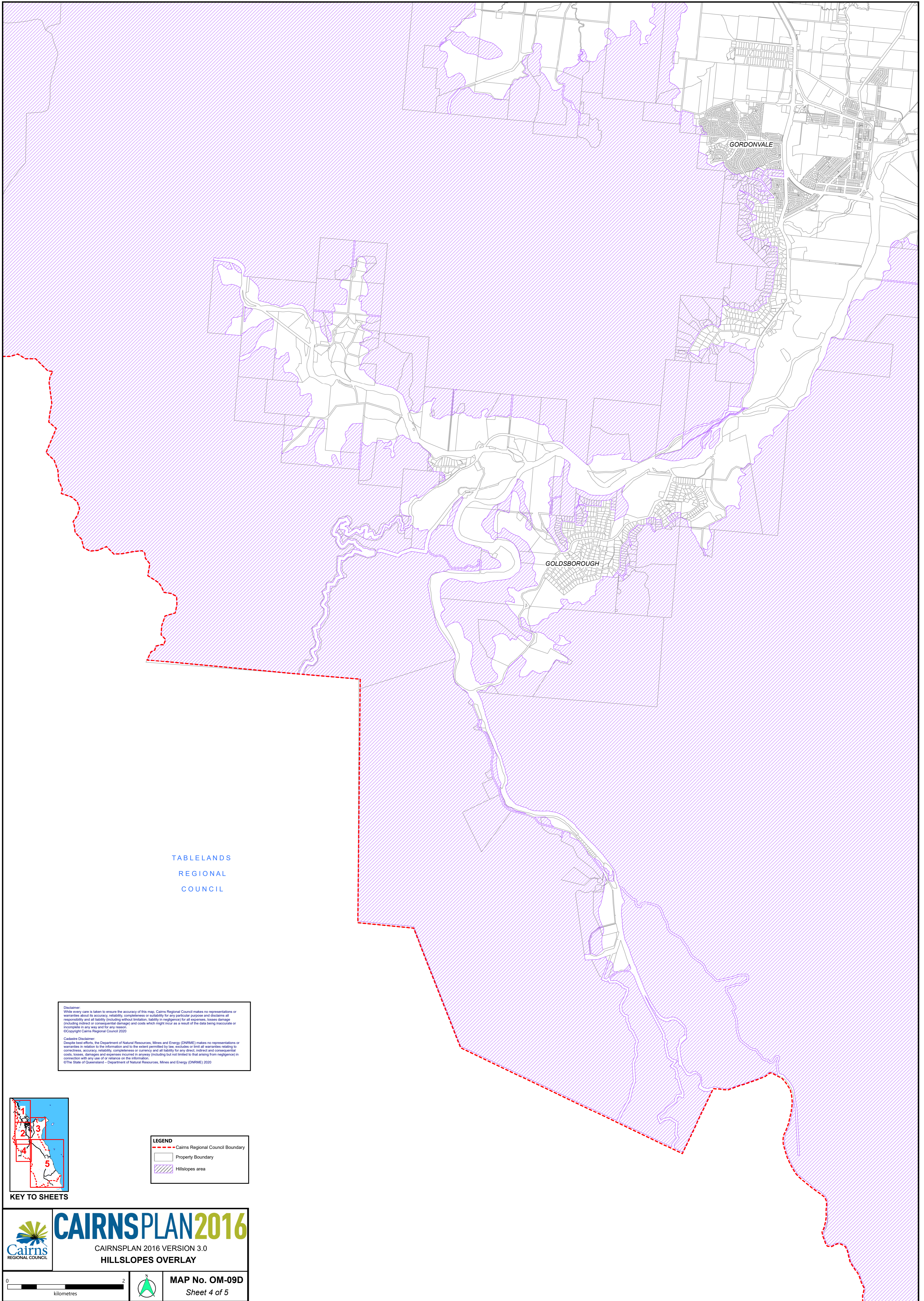


KEY TO SHEETS


**CAIRNSPLAN2016**  
 CAIRNSPLAN 2016 VERSION 3.0  
**HILLSLOPES OVERLAY**



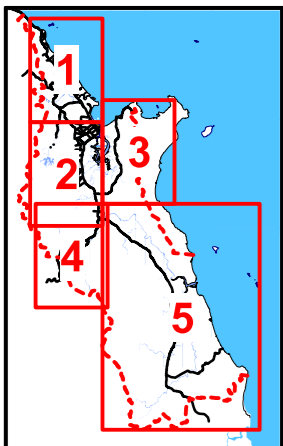
**MAP No. OM-09C**  
Sheet 3 of 5



TABLELANDS  
REGIONAL  
COUNCIL

**Disclaimer:**  
While every care is taken to ensure the accuracy of this map, Cairns Regional Council makes no representations or warranties about its accuracy, reliability, completeness or suitability for any particular purpose and disclaims all responsibility and all liability (including without limitation, liability in negligence) for all expenses, losses, damage (including indirect or consequential damage) and costs which might incur as a result of the data being inaccurate or incomplete in any way and for any reason.  
©Copyright Cairns Regional Council 2020

**Disclaimer:**  
Despite best efforts, the Department of Natural Resources, Mines and Energy (DNRM) makes no representations or warranties in relation to the information and to the extent permitted by law, excludes or limit all warranties relating to correctness, accuracy, reliability, completeness or currency and all liability for any direct, indirect and consequential costs, losses, damages and expenses incurred in anyway (including but not limited to that arising from negligence) in connection with any use of or reliance on the information.  
©The State of Queensland – Department of Natural Resources, Mines and Energy (DNRM) 2020



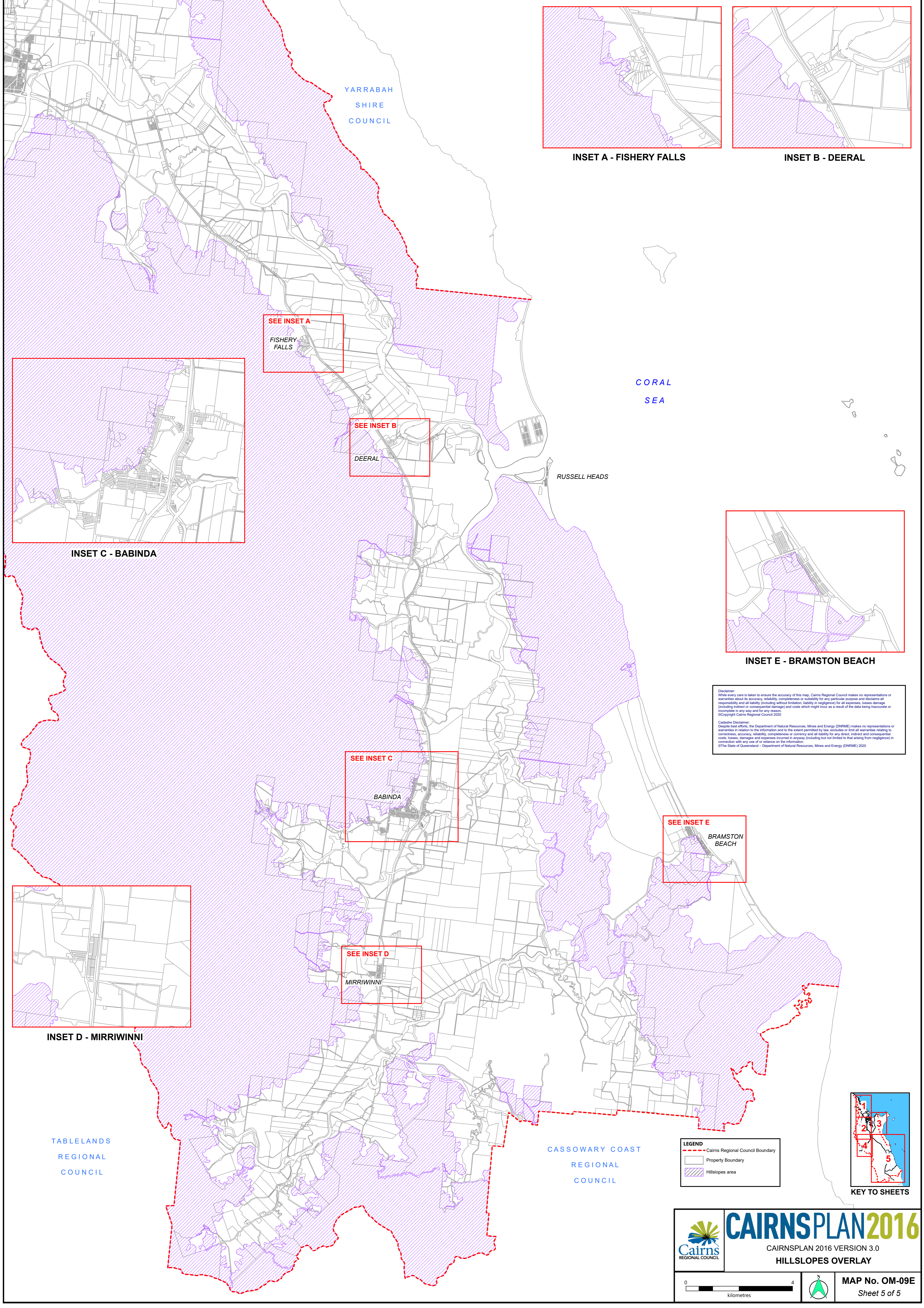
KEY TO SHEETS

LEGEND	
	Cairns Regional Council Boundary
	Property Boundary
	Hillslopes area

**CAIRNSPLAN2016**  
CAIRNSPLAN 2016 VERSION 3.0  
**HILLSLOPES OVERLAY**



**MAP No. OM-09D**  
Sheet 4 of 5



YARRABAH  
SHIRE  
COUNCIL

INSET A - FISHERY FALLS

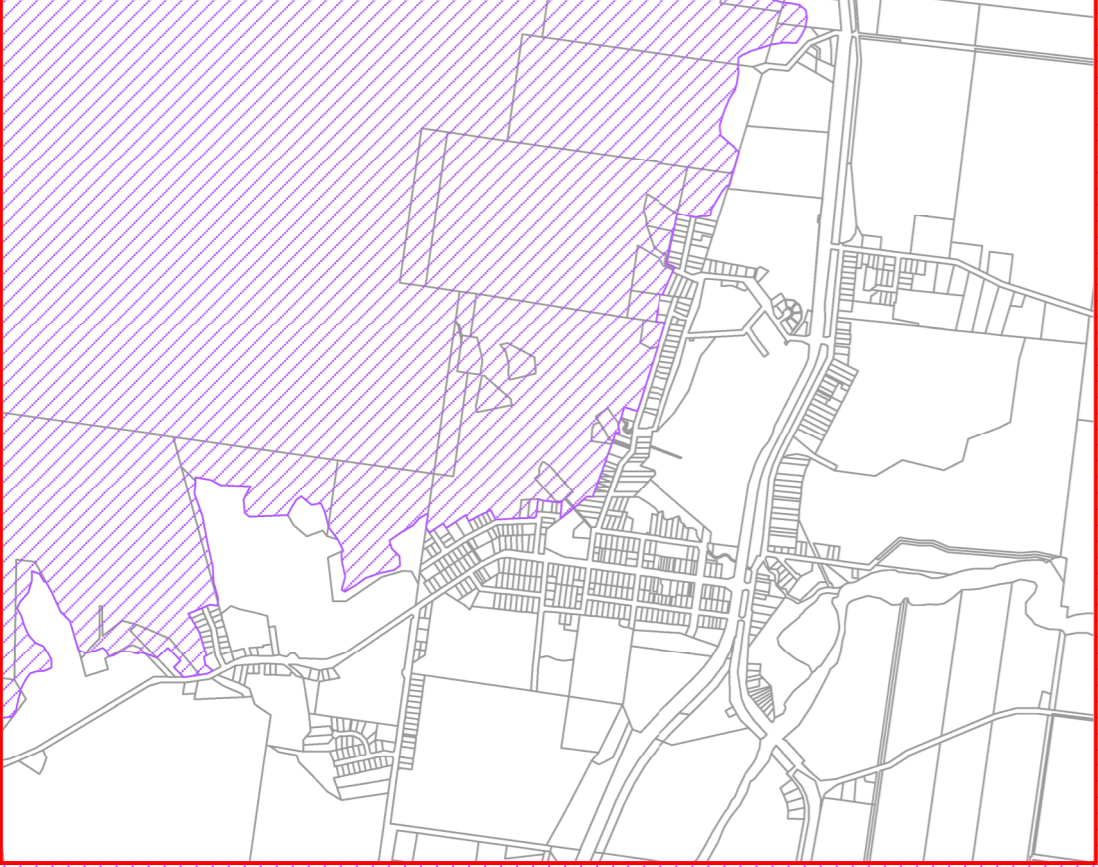
INSET B - DEERAL

SEE INSET A  
FISHERY  
FALLS

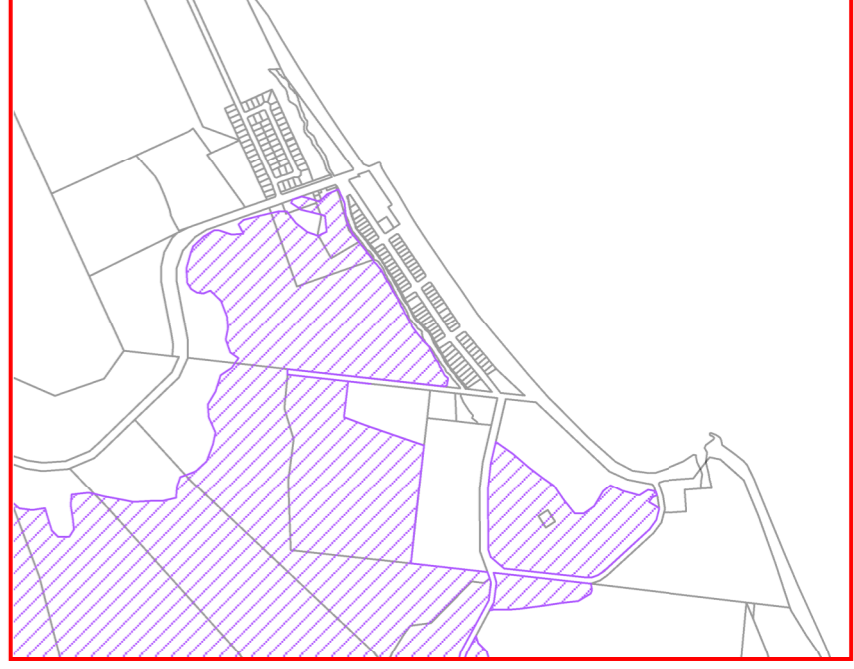
SEE INSET B  
DEERAL

CORAL  
SEA

RUSSELL HEADS



INSET C - BABINDA



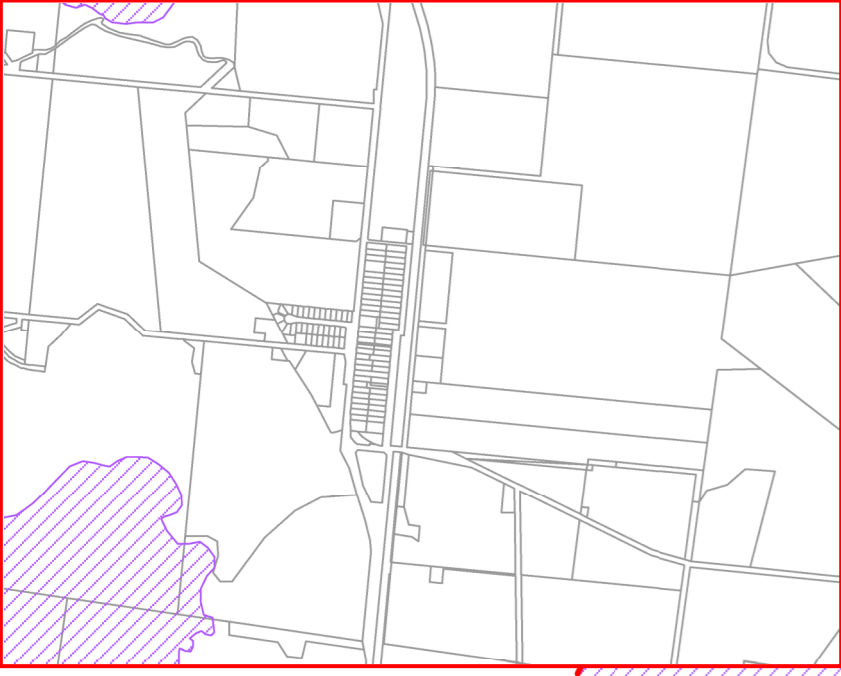
INSET E - BRAMSTON BEACH

**Disclaimer:**  
While every care is taken to ensure the accuracy of this map, Cairns Regional Council makes no representations or warranties about its accuracy, reliability, completeness or suitability for any particular purpose and disclaims all responsibility and all liability (including without limitation, liability in negligence) for all expenses, losses, damage (including indirect or consequential damage) and costs which might incur as a result of the data being inaccurate or incomplete in any way and for any reason.  
©Copyright Cairns Regional Council 2020

**Cadastral Disclaimer:**  
Despite best efforts, the Department of Natural Resources, Mines and Energy (DNRM) makes no representations or warranties in relation to the information and to the extent permitted by law, excludes or limit all warranties relating to correctness, accuracy, reliability, completeness or currency and all liability for any direct, indirect and consequential costs, losses, damages and expenses incurred in anyway (including but not limited to that arising from negligence) in connection with any use of or reliance on the information.  
©The State of Queensland - Department of Natural Resources, Mines and Energy (DNRM) 2020

SEE INSET C  
BABINDA

SEE INSET E  
BRAMSTON  
BEACH



INSET D - MIRRIWINNI

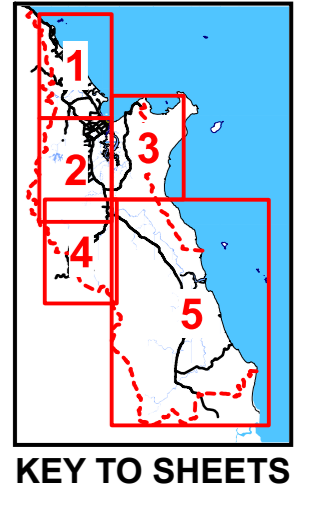
SEE INSET D  
MIRRIWINNI

TABLELANDS  
REGIONAL  
COUNCIL

CASSOWARY COAST  
REGIONAL  
COUNCIL

**LEGEND**

- Cairns Regional Council Boundary
- Property Boundary
- Hillslopes area



KEY TO SHEETS

**CAIRNSPLAN2016**  
CAIRNSPLAN 2016 VERSION 3.0  
HILLSLOPES OVERLAY

0 4  
kilometres

**MAP No. OM-09E**  
Sheet 5 of 5