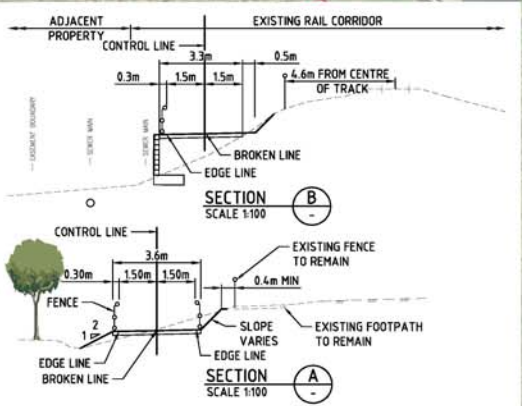
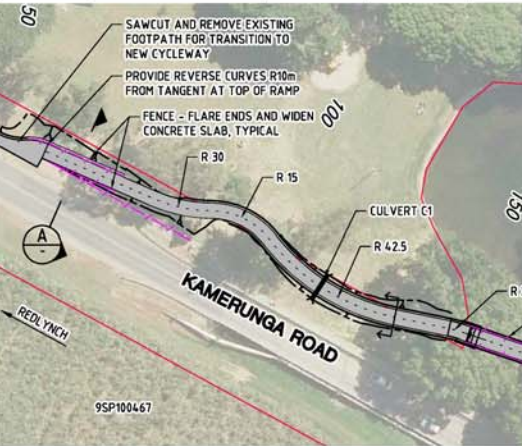
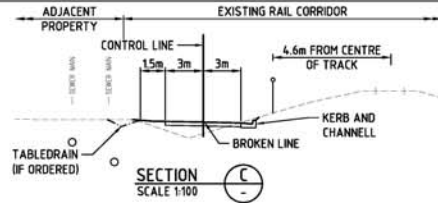


NOTES

- REFER DRG 22895-N00 FOR STANDARD NOTES, PAVEMENT DETAILS, PATH GRADING AND CLEARANCE REQUIREMENTS, AND TYPICAL LINE MARKING AND SIGNAGE AT CYCLEWAY CROSSING.
- THE FINISHED LEVEL AND CROSSFALL OF THE PATHS SHALL BE LOCATED TO ENSURE THE EXISTING DRAINAGE PATHS ARE NOT ADVERSELY AFFECTED AND MUST BE VERIFIED ON SITE BY THE SUPERINTENDENT PRIOR TO CONSTRUCTION.
- FOR FOOTPATH SECTIONS WITH STEEPER GRADING REFER LONG SECTIONS ON DRG 22895-C06.
- SETOUT POINTS FOR STORMWATER ARE THE MIDDLE OF PIT AT THE LIP OF THE KERB WITH THE LEVELS FROM THE SECTIONS.

SETOUT DATA - STORMWATER NETWORK

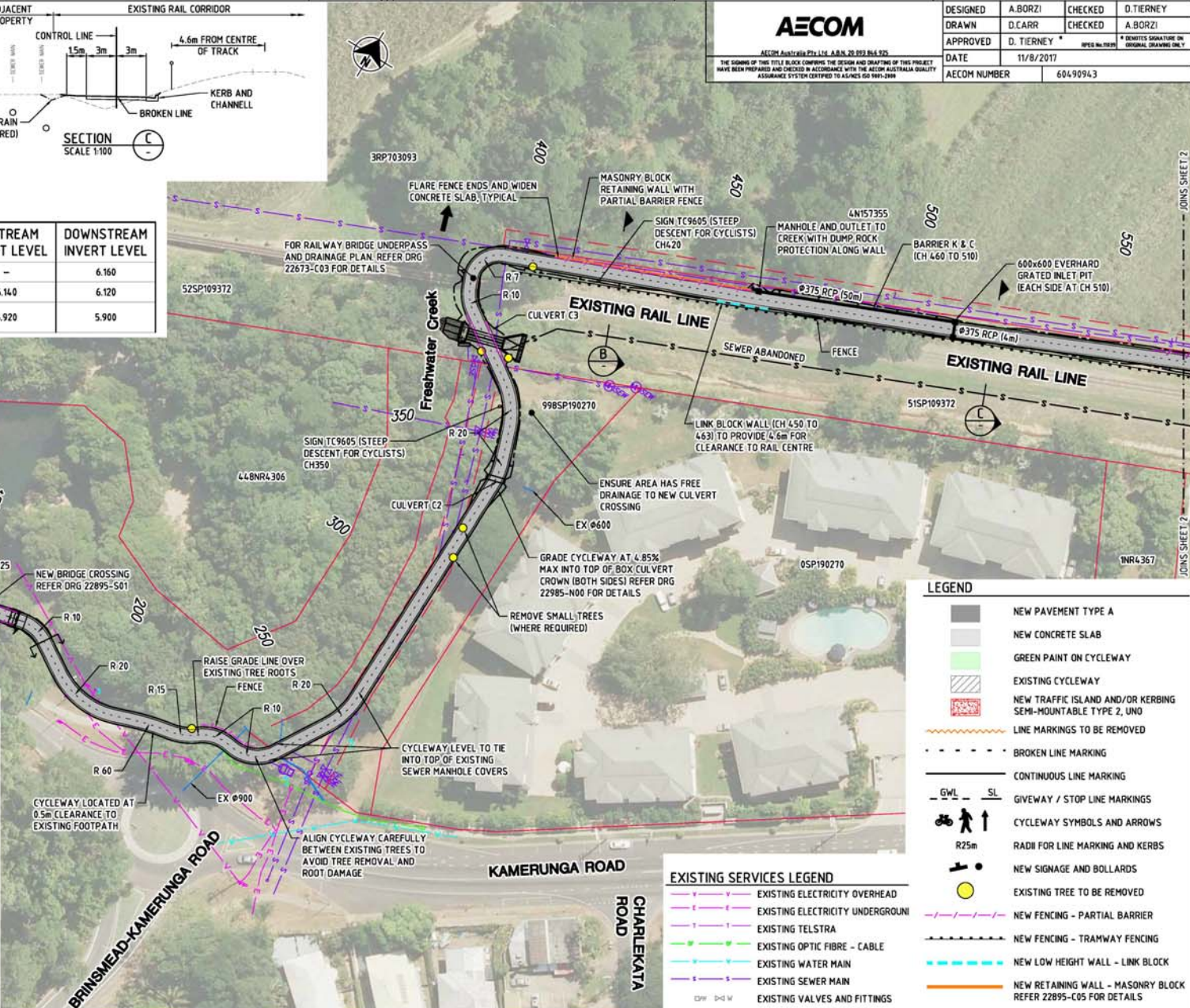
| STRUCT NO. | DESCRIPTION | EASTING | NORTHING | UPSTREAM INVERT LEVEL | DOWNSTREAM INVERT LEVEL |
|------------|---|------------|-------------|-----------------------|-------------------------|
| S1 | 600x600 GRATED INLET PIT | 362108.899 | 8132890.554 | - | 6.160 |
| S2 | 600x600 GRATED INLET PIT | 362107.761 | 8132893.330 | 6.140 | 6.120 |
| S3 | GRATED INLET PIT OVER 900x600 MANHOLE TO OUTLET | 362061.493 | 8132874.376 | 5.920 | 5.900 |



AECOM

AECOM Australia Pty Ltd. A.B.N. 20 993 864 975

DESIGNED: A.BORZI, CHECKED: D.TIERNEY
 DRAWN: D.CARR, CHECKED: A.BORZI
 APPROVED: D.TIERNEY * DENOTES SIGNATURE ON ORIGINAL DRAWINGS ONLY
 DATE: 11/8/2017
 AECOM NUMBER: 6049094.3



LEGEND

- NEW PAVEMENT TYPE A
- NEW CONCRETE SLAB
- GREEN PAINT ON CYCLEWAY
- EXISTING CYCLEWAY
- NEW TRAFFIC ISLAND AND/OR KERBING SEMI-MOUNTABLE TYPE 2, UNO
- LINE MARKINGS TO BE REMOVED
- BROKEN LINE MARKING
- CONTINUOUS LINE MARKING
- GIVEWAY / STOP LINE MARKINGS
- CYCLEWAY SYMBOLS AND ARROWS
- RADI FOR LINE MARKING AND KERBS
- NEW SIGNAGE AND BOLLARDS
- EXISTING TREE TO BE REMOVED
- NEW FENCING - PARTIAL BARRIER
- NEW FENCING - TRAMWAY FENCING
- NEW LOW HEIGHT WALL - LINK BLOCK
- NEW RETAINING WALL - MASONRY BLOCK REFER 22895-C05 FOR DETAILS

EXISTING SERVICES LEGEND

- EXISTING ELECTRICITY OVERHEAD
- EXISTING ELECTRICITY UNDERGROUND
- EXISTING TELSTRA
- EXISTING OPTIC FIBRE - CABLE
- EXISTING WATER MAIN
- EXISTING SEWER MAIN
- EXISTING VALVES AND FITTINGS



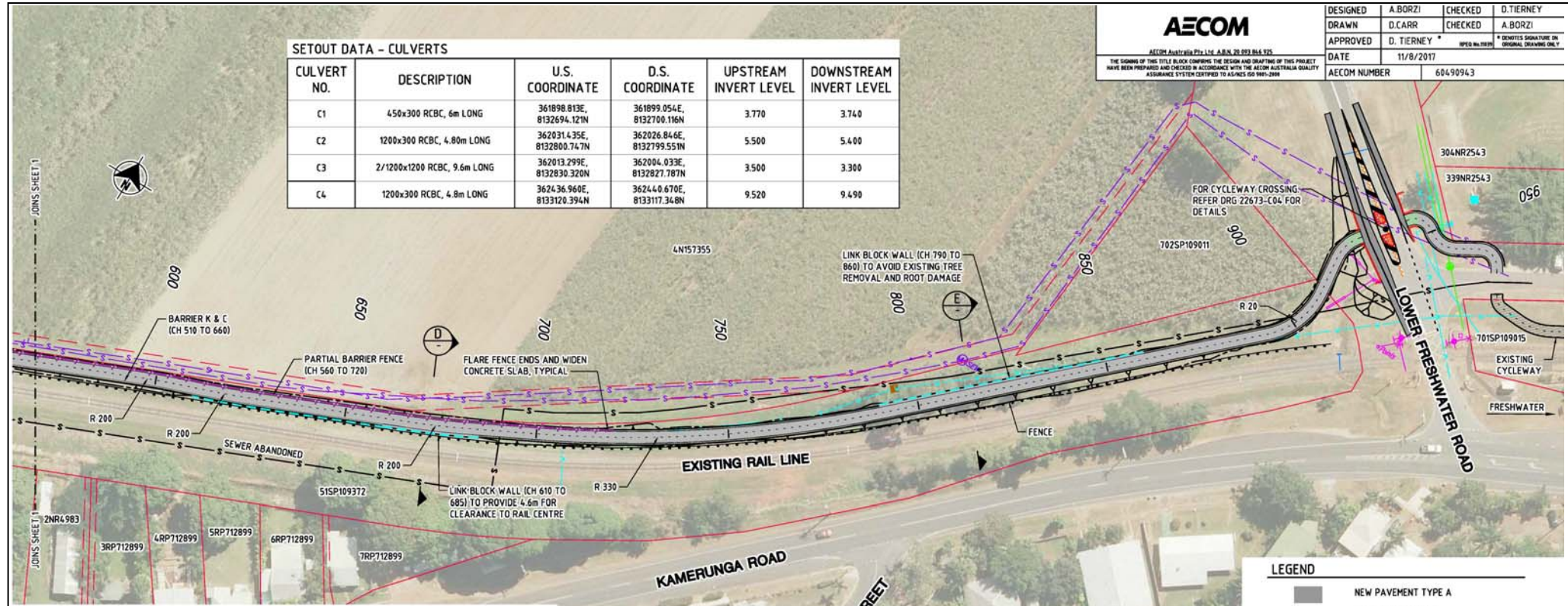
Cairns Northern Cycleway project
 Ryan Weare Park along Freshwater Creek to Rail Line

AECOM
AECOM Australia Pty Ltd A.B.N. 70 093 046 925
 THE SIGNING OF THIS TITLE BLOCK CONFIRMS THE DESIGN AND DRAFTING OF THIS PROJECT HAVE BEEN PREPARED AND CHECKED IN ACCORDANCE WITH THE AECOM AUSTRALIAN QUALITY ASSURANCE SYSTEM CERTIFIED TO AS/NZS ISO 9001:2008

| | | | |
|--------------|-----------|--|-----------|
| DESIGNED | A.BORZI | CHECKED | D.TIERNEY |
| DRAWN | D.CARR | CHECKED | A.BORZI |
| APPROVED | D.TIERNEY | * DENOTES SIGNATURE ON ORIGINAL DRAWING ONLY | |
| DATE | 11/8/2017 | | |
| AECOM NUMBER | 604.90943 | | |

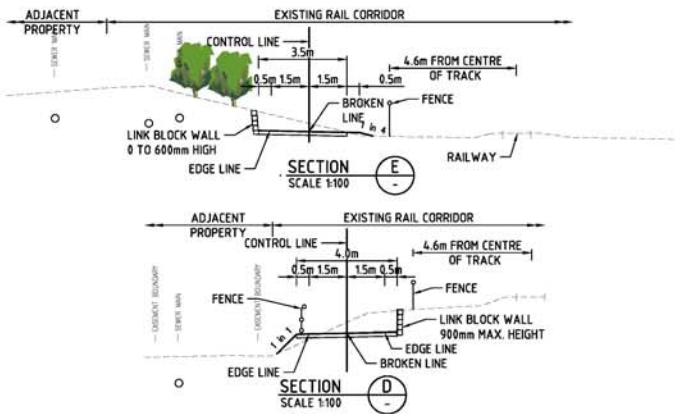
SETOUT DATA - CULVERTS

| CULVERT NO. | DESCRIPTION | U.S. COORDINATE | D.S. COORDINATE | UPSTREAM INVERT LEVEL | DOWNSTREAM INVERT LEVEL |
|-------------|-----------------------------|---------------------------|---------------------------|-----------------------|-------------------------|
| C1 | 450x300 RCBC, 6m LONG | 361898.813E, 8132694.121N | 361899.054E, 8132700.166N | 3.770 | 3.740 |
| C2 | 1200x300 RCBC, 4.80m LONG | 362031.435E, 8132800.747N | 362026.846E, 8132799.551N | 5.500 | 5.400 |
| C3 | 2/1200x1200 RCBC, 9.6m LONG | 362013.299E, 8132830.320N | 362004.033E, 8132827.787N | 3.500 | 3.300 |
| C4 | 1200x300 RCBC, 4.8m LONG | 362436.960E, 8133120.394N | 362440.670E, 8133117.348N | 9.520 | 9.490 |



LEGEND

- NEW PAVEMENT TYPE A
- NEW CONCRETE SLAB
- GREEN PAINT ON CYCLEWAY
- EXISTING CYCLEWAY
- NEW TRAFFIC ISLAND AND/OR KERBING SEMI-MOUNTABLE TYPE 2, UNO
- LINE MARKINGS TO BE REMOVED
- BROKEN LINE MARKING
- CONTINUOUS LINE MARKING
- GIVEWAY / STOP LINE MARKINGS
- CYCLEWAY SYMBOLS AND ARROWS
- RADII FOR LINE MARKING AND KERBS
- NEW SIGNAGE AND BOLLARDS
- EXISTING TREE TO BE REMOVED
- NEW FENCING - PARTIAL BARRIER
- NEW FENCING - TRAMWAY FENCING
- NEW LOW HEIGHT WALL - LINK BLOCK REFER 22895-C05 FOR DETAILS
- NEW RETAINING WALL - MASONRY BLOCK REFER 22895-C05 FOR DETAILS



NOTES

- REFER DRG 22895-N00 FOR STANDARD NOTES, PAVEMENT DETAILS, PATH GRADING AND CLEARANCE REQUIREMENTS, AND TYPICAL LINE MARKING AND SIGNAGE AT CYCLEWAY CROSSING.
- THE FINISHED LEVEL AND CROSSFALL OF THE PATHS SHALL BE LOCATED TO ENSURE THE EXISTING DRAINAGE PATHS ARE NOT ADVERSELY AFFECTED AND MUST BE VERIFIED ON SITE BY THE SUPERINTENDENT PRIOR TO CONSTRUCTION.
- FOR FOOTPATH SECTIONS WITH STEEPER GRADING REFER LONG SECTIONS ON DRG 22895-C06.

EXISTING SERVICES LEGEND

- EXISTING ELECTRICITY OVERHEAD
- EXISTING ELECTRICITY UNDERGROUND
- EXISTING TELSTRA
- EXISTING OPTIC FIBRE - CABLE
- EXISTING WATER MAIN
- EXISTING SEWER MAIN
- EXISTING VALVES AND FITTINGS



**Cairns Northern Cycleway project
 Rail Line to Lower Freshwater Road**