

ADOPTION OF DIFFERENTIAL GENERAL RATES FOR THE 2026/27 FINANCIAL YEAR

F&BS | 63/19/1 | #7867711

RECOMMENDATION:

That Council:

1. Resolve, pursuant to section 81 of the *Local Government Regulation 2012*, the categories into which rateable land is categorised, the description of each of those categories and, the method by which land is to be identified and included in its appropriate category is as follows:

Summary of Land Use Categories

The following categories and descriptions are to be used for rating purposes for all rateable properties:

Category	Description
Residential A	Residential properties (standard title)
Residential K	Residential properties (community title).
Residential L2	Land accommodating 2 multi-unit dwellings.
Residential L3	Land accommodating 3 multi-unit dwellings.
Residential L4	Land accommodating 4 multi-unit dwellings.
Residential L5	Land accommodating 5 multi-unit dwellings.
Residential L6	Land accommodating 6 multi-unit dwellings.
Residential L7	Land accommodating 7 multi-unit dwellings.
Residential L8	Land accommodating 8 multi-unit dwellings.
Residential L9	Land accommodating 9 multi-unit dwellings.
Residential L10	Land accommodating 10 multi-unit dwellings.
Residential L11	Land accommodating 11 multi-unit dwellings.
Residential L12	Land accommodating 12 multi-unit dwellings.
Residential L13	Land accommodating 13 multi-unit dwellings.
Residential L14	Land accommodating 14 multi-unit dwellings.
Residential L15	Land accommodating 15 multi-unit dwellings.
Residential L16	Land accommodating 16 multi-unit dwellings.
Residential L17	Land accommodating 17 multi-unit dwellings.
Residential L18	Land accommodating 18 multi-unit dwellings.
Residential L19	Land accommodating 19 multi-unit dwellings.
Residential L20	Land accommodating 20 multi-unit dwellings.
Residential L21	Land accommodating 21 multi-unit dwellings.
Residential L22	Land accommodating 22 multi-unit dwellings.
Residential L23	Land accommodating 23 multi-unit dwellings.

Category	Description
Residential L24	Land accommodating 24 multi-unit dwellings.
Residential L25	Land accommodating 25 multi-unit dwellings.
Residential L26	Land accommodating 26 multi-unit dwellings.
Residential L27	Land accommodating 27 multi-unit dwellings.
Residential L28	Land accommodating 28 multi-unit dwellings.
Residential L29	Land accommodating 29 multi-unit dwellings.
Residential L30	Land accommodating 30 multi-unit dwellings.
Residential L31	Land accommodating 31 multi-unit dwellings.
Residential L32	Land accommodating 32 multi-unit dwellings.
Residential L33	Land accommodating 33 multi-unit dwellings.
Residential L34	Land accommodating 34 multi-unit dwellings.
Residential L35	Land accommodating 35 multi-unit dwellings.
Residential L36	Land accommodating 36 multi-unit dwellings.
Residential L37	Land accommodating 37 multi-unit dwellings.
Residential L38	Land accommodating 38 multi-unit dwellings.
Residential L39	Land accommodating 39 multi-unit dwellings.
Residential L40	Land accommodating 40 multi-unit dwellings.
Residential L41	Land accommodating 41 multi-unit dwellings.
Residential L42	Land accommodating 42 multi-unit dwellings.
Residential L43	Land accommodating 43 multi-unit dwellings.
Residential L44	Land accommodating 44 multi-unit dwellings.
Residential L45	Land accommodating 45 multi-unit dwellings.
Residential L46	Land accommodating 46 multi-unit dwellings.
Residential L47	Land accommodating 47 multi-unit dwellings.
Residential L48	Land accommodating 48 multi-unit dwellings.
Residential L49	Land accommodating 49 multi-unit dwellings.
Residential L50	Land accommodating 50 multi-unit dwellings.
Residential L51	Land accommodating 51 multi-unit dwellings.
Residential L52	Land accommodating 52 multi-unit dwellings.
Residential L53	Land accommodating 53 multi-unit dwellings.
Residential L54	Land accommodating 54 multi-unit dwellings.
Residential L55	Land accommodating 55 multi-unit dwellings.
Residential L56	Land accommodating 56 multi-unit dwellings.
Residential L57	Land accommodating 57 multi-unit dwellings.
Residential L58	Land accommodating 58 multi-unit dwellings.
Residential L59	Land accommodating 59 multi-unit dwellings.
Residential L60	Land accommodating 60 multi-unit dwellings.
Residential L61	Land accommodating 61 multi-unit dwellings.
Residential L62	Land accommodating 62 multi-unit dwellings.
Residential L63	Land accommodating 63 multi-unit dwellings.
Residential L64	Land accommodating 64 multi-unit dwellings.
Residential L65	Land accommodating 65 multi-unit dwellings.
Residential L66	Land accommodating 66 multi-unit dwellings.
Residential L67	Land accommodating 67 multi-unit dwellings.
Residential L68	Land accommodating 68 multi-unit dwellings.

Category	Description
Residential L69	Land accommodating 69 multi-unit dwellings.
Residential L70	Land accommodating 70 multi-unit dwellings.
Residential L71	Land accommodating 71 multi-unit dwellings.
Residential L72	Land accommodating 72 multi-unit dwellings.
Residential L73	Land accommodating 73 multi-unit dwellings.
Residential L74	Land accommodating 74 multi-unit dwellings.
Residential L75	Land accommodating 75 multi-unit dwellings.
Residential L76	Land accommodating 76 multi-unit dwellings.
Residential L77	Land accommodating 77 multi-unit dwellings.
Residential L78	Land accommodating 78 multi-unit dwellings.
Residential L79	Land accommodating 79 multi-unit dwellings.
Residential L80	Land accommodating 80 multi-unit dwellings.
Residential L81	Land accommodating 81 multi-unit dwellings.
Residential L82	Land accommodating 82 multi-unit dwellings.
Residential L83	Land accommodating 83 multi-unit dwellings.
Residential L84	Land accommodating 84 multi-unit dwellings.
Residential L85	Land accommodating 85 multi-unit dwellings.
Residential L86	Land accommodating 86 multi-unit dwellings.
Residential L87	Land accommodating 87 multi-unit dwellings.
Residential L88	Land accommodating 88 multi-unit dwellings.
Residential L89	Land accommodating 89 multi-unit dwellings.
Residential L90	Land accommodating 90 multi-unit dwellings.
Residential L91	Land accommodating 91 multi-unit dwellings.
Residential L92	Land accommodating 92 multi-unit dwellings.
Residential L93	Land accommodating 93 multi-unit dwellings.
Residential L94	Land accommodating 94 multi-unit dwellings.
Residential L95	Land accommodating 95 multi-unit dwellings.
Residential L96	Land accommodating 96 multi-unit dwellings.
Residential L97	Land accommodating 97 multi-unit dwellings.
Residential L98	Land accommodating 98 multi-unit dwellings.
Residential L99	Land accommodating 99 multi-unit dwellings.
Residential L100	Land accommodating 100 multi-unit dwellings.
Residential L101	Land accommodating 101 multi-unit dwellings.
Residential L102	Land accommodating 102 multi-unit dwellings.
Residential L103	Land accommodating 103 multi-unit dwellings.
Residential L104	Land accommodating 104 multi-unit dwellings.
Residential L105	Land accommodating 105 multi-unit dwellings.
Residential L106	Land accommodating 106 multi-unit dwellings.
Residential L107	Land accommodating 107 multi-unit dwellings.
Residential L108	Land accommodating 108 multi-unit dwellings.
Residential L109	Land accommodating 109 multi-unit dwellings.
Residential L110	Land accommodating 110 multi-unit dwellings.
Residential L111	Land accommodating 111 multi-unit dwellings.
Residential L112	Land accommodating 112 multi-unit dwellings.
Residential L113	Land accommodating 113 multi-unit dwellings.

Category	Description
Residential L114	Land accommodating 114 multi-unit dwellings.
Residential L115	Land accommodating 115 multi-unit dwellings.
Residential L116	Land accommodating 116 multi-unit dwellings.
Residential L117	Land accommodating 117 multi-unit dwellings.
Residential L118	Land accommodating 118 multi-unit dwellings.
Residential L119	Land accommodating 119 multi-unit dwellings.
Residential L120	Land accommodating 120 multi-unit dwellings.
Residential L121	Land accommodating 121 multi-unit dwellings.
Residential L122	Land accommodating 122 multi-unit dwellings.
Residential L123	Land accommodating 123 multi-unit dwellings.
Residential L124	Land accommodating 124 multi-unit dwellings.
Residential L125	Land accommodating 125 multi-unit dwellings.
Residential L126	Land accommodating 126 multi-unit dwellings.
Residential L127	Land accommodating 127 multi-unit dwellings.
Residential L128	Land accommodating 128 multi-unit dwellings.
Residential L129	Land accommodating 129 multi-unit dwellings.
Residential L130	Land accommodating 130 multi-unit dwellings.
Residential L131	Land accommodating 131 multi-unit dwellings.
Residential L132	Land accommodating 132 multi-unit dwellings.
Residential L133	Land accommodating 133 multi-unit dwellings.
Residential L134	Land accommodating 134 multi-unit dwellings.
Residential L135	Land accommodating 135 multi-unit dwellings.
Residential L136	Land accommodating 136 multi-unit dwellings.
Residential L137	Land accommodating 137 multi-unit dwellings.
Residential L138	Land accommodating 138 multi-unit dwellings.
Residential L139	Land accommodating 139 multi-unit dwellings.
Residential L140	Land accommodating 140 multi-unit dwellings.
Residential L141	Land accommodating 141 multi-unit dwellings.
Residential L142	Land accommodating 142 multi-unit dwellings.
Residential L143	Land accommodating 143 multi-unit dwellings.
Residential L144	Land accommodating 144 multi-unit dwellings.
Residential L145	Land accommodating 145 multi-unit dwellings.
Residential L146	Land accommodating 146 multi-unit dwellings.
Residential L147	Land accommodating 147 multi-unit dwellings.
Residential L148	Land accommodating 148 multi-unit dwellings.
Residential L149	Land accommodating 149 multi-unit dwellings.
Residential L150	Land accommodating 150 multi-unit dwellings.
Residential L151	Land accommodating 151 multi-unit dwellings.
Residential L152	Land accommodating 152 multi-unit dwellings.
Residential L153	Land accommodating 153 multi-unit dwellings.
Residential L154	Land accommodating 154 multi-unit dwellings.
Residential L155	Land accommodating 155 multi-unit dwellings.
Residential L156	Land accommodating 156 multi-unit dwellings.
Residential L157	Land accommodating 157 multi-unit dwellings.
Residential L158	Land accommodating 158 multi-unit dwellings.

Category	Description
Residential L159	Land accommodating 159 multi-unit dwellings.
Residential L160	Land accommodating 160 multi-unit dwellings.
Residential L161	Land accommodating 161 multi-unit dwellings.
Residential L162	Land accommodating 162 multi-unit dwellings.
Residential L163	Land accommodating 163 multi-unit dwellings.
Residential L164	Land accommodating 164 multi-unit dwellings.
Residential L165	Land accommodating 165 multi-unit dwellings.
Residential L166	Land accommodating 166 multi-unit dwellings.
Residential L167	Land accommodating 167 multi-unit dwellings.
Residential L168	Land accommodating 168 multi-unit dwellings.
Residential L169	Land accommodating 169 multi-unit dwellings.
Residential L170	Land accommodating 170 multi-unit dwellings.
Residential L171	Land accommodating 171 multi-unit dwellings.
Residential L172	Land accommodating 172 multi-unit dwellings.
Residential L173	Land accommodating 173 multi-unit dwellings.
Residential L174	Land accommodating 174 multi-unit dwellings.
Residential L175	Land accommodating 175 multi-unit dwellings.
Residential L176	Land accommodating 176 multi-unit dwellings.
Residential L177	Land accommodating 177 multi-unit dwellings.
Residential L178	Land accommodating 178 multi-unit dwellings.
Residential L179	Land accommodating 179 multi-unit dwellings.
Residential L180	Land accommodating 180 multi-unit dwellings.
Residential L181	Land accommodating 181 multi-unit dwellings.
Residential L182	Land accommodating 182 multi-unit dwellings.
Residential L183	Land accommodating 183 multi-unit dwellings.
Residential L184	Land accommodating 184 multi-unit dwellings.
Residential L185	Land accommodating 185 multi-unit dwellings.
Residential L186	Land accommodating 186 multi-unit dwellings.
Residential L187	Land accommodating 187 multi-unit dwellings.
Residential L188	Land accommodating 188 multi-unit dwellings.
Residential L189	Land accommodating 189 multi-unit dwellings.
Residential L190	Land accommodating 190 multi-unit dwellings.
Residential L191	Land accommodating 191 multi-unit dwellings.
Residential L192	Land accommodating 192 multi-unit dwellings.
Residential L193	Land accommodating 193 multi-unit dwellings.
Residential L194	Land accommodating 194 multi-unit dwellings.
Residential L195	Land accommodating 195 multi-unit dwellings.
Residential L196	Land accommodating 196 multi-unit dwellings.
Residential L197	Land accommodating 197 multi-unit dwellings.
Residential L198	Land accommodating 198 multi-unit dwellings.
Residential L199	Land accommodating 199 multi-unit dwellings.
Residential L200	Land accommodating 200 multi-unit dwellings.
Residential L201	Land accommodating 201 multi-unit dwellings.
Residential L202	Land accommodating 202 multi-unit dwellings.
Residential L203	Land accommodating 203 multi-unit dwellings.

Category	Description
Residential L204	Land accommodating 204 multi-unit dwellings.
Residential L205	Land accommodating 205 multi-unit dwellings.
Residential L206	Land accommodating 206 multi-unit dwellings.
Residential L207	Land accommodating 207 multi-unit dwellings.
Residential L208	Land accommodating 208 multi-unit dwellings.
Residential L209	Land accommodating 209 multi-unit dwellings.
Residential L210	Land accommodating 210 multi-unit dwellings.
Residential L211	Land accommodating 211 multi-unit dwellings.
Residential L212	Land accommodating 212 multi-unit dwellings.
Residential L213	Land accommodating 213 multi-unit dwellings.
Residential L214	Land accommodating 214 multi-unit dwellings.
Residential L215	Land accommodating 215 multi-unit dwellings.
Residential L216	Land accommodating 216 multi-unit dwellings.
Residential L217	Land accommodating 217 multi-unit dwellings.
Residential L218	Land accommodating 218 multi-unit dwellings.
Residential L219	Land accommodating 219 multi-unit dwellings.
Residential L220	Land accommodating 220 multi-unit dwellings.
Residential L221	Land accommodating 221 multi-unit dwellings.
Residential L222	Land accommodating 222 multi-unit dwellings.
Residential L223	Land accommodating 223 multi-unit dwellings.
Residential L224	Land accommodating 224 multi-unit dwellings.
Residential L225	Land accommodating 225 multi-unit dwellings.
Residential L226	Land accommodating 226 multi-unit dwellings.
Residential L227	Land accommodating 227 multi-unit dwellings.
Residential L228	Land accommodating 228 multi-unit dwellings.
Residential L229	Land accommodating 229 multi-unit dwellings.
Residential L230	Land accommodating 230 multi-unit dwellings.
Residential L231	Land accommodating 231 multi-unit dwellings.
Residential L232	Land accommodating 232 multi-unit dwellings.
Residential L233	Land accommodating 233 multi-unit dwellings.
Residential L234	Land accommodating 234 multi-unit dwellings.
Residential L235	Land accommodating 235 multi-unit dwellings.
Residential L236	Land accommodating 236 multi-unit dwellings.
Residential L237	Land accommodating 237 multi-unit dwellings.
Residential L238	Land accommodating 238 multi-unit dwellings.
Residential L239	Land accommodating 239 multi-unit dwellings.
Residential L240	Land accommodating 240 multi-unit dwellings.
Residential L241	Land accommodating 241 multi-unit dwellings.
Residential L242	Land accommodating 242 multi-unit dwellings.
Residential L243	Land accommodating 243 multi-unit dwellings.
Residential L244	Land accommodating 244 multi-unit dwellings.
Residential L245	Land accommodating 245 multi-unit dwellings.
Residential L246	Land accommodating 246 multi-unit dwellings.
Residential L247	Land accommodating 247 multi-unit dwellings.
Residential L248	Land accommodating 248 multi-unit dwellings.

Category	Description
Residential L294	Land accommodating 294 multi-unit dwellings.
Residential L295	Land accommodating 295 multi-unit dwellings.
Residential L296	Land accommodating 296 multi-unit dwellings.
Residential L297	Land accommodating 297 multi-unit dwellings.
Residential L298	Land accommodating 298 multi-unit dwellings.
Residential L299	Land accommodating 299 multi-unit dwellings.
Residential L300	Land accommodating 300 multi-unit dwellings.
Residential L301	Land accommodating 301 multi-unit dwellings.
Residential L302	Land accommodating 302 multi-unit dwellings.
Residential L303	Land accommodating 303 multi-unit dwellings.
Residential L304	Land accommodating 304 multi-unit dwellings.
Residential L305	Land accommodating 305 multi-unit dwellings.
Residential L306	Land accommodating 306 multi-unit dwellings.
Residential L307	Land accommodating 307 multi-unit dwellings.
Residential L308	Land accommodating 308 multi-unit dwellings.
Residential L309	Land accommodating 309 multi-unit dwellings.
Residential L310	Land accommodating 310 multi-unit dwellings.
Residential L311	Land accommodating 311 multi-unit dwellings.
Residential L312	Land accommodating 312 multi-unit dwellings.
Residential L313	Land accommodating 313 multi-unit dwellings.
Residential L314	Land accommodating 314 multi-unit dwellings.
Residential L315	Land accommodating 315 multi-unit dwellings.
Residential L316	Land accommodating 316 multi-unit dwellings.
Residential L317	Land accommodating 317 multi-unit dwellings.
Residential L318	Land accommodating 318 multi-unit dwellings.
Residential L319	Land accommodating 319 multi-unit dwellings.
Residential L320	Land accommodating 320 multi-unit dwellings.
Residential L321	Land accommodating 321 multi-unit dwellings.
Residential L322	Land accommodating 322 multi-unit dwellings.
Residential L323	Land accommodating 323 multi-unit dwellings.
Residential L324	Land accommodating 324 multi-unit dwellings.
Residential L325	Land accommodating 325 multi-unit dwellings.
Residential L326	Land accommodating 326 multi-unit dwellings.
Residential L327	Land accommodating 327 multi-unit dwellings.
Residential L328	Land accommodating 328 multi-unit dwellings.
Residential L329	Land accommodating 329 multi-unit dwellings.
Residential L330	Land accommodating 330 multi-unit dwellings.
Residential L331	Land accommodating 331 multi-unit dwellings.
Residential L332	Land accommodating 332 multi-unit dwellings.
Residential L333	Land accommodating 333 multi-unit dwellings.
Residential L334	Land accommodating 334 multi-unit dwellings.
Residential L335	Land accommodating 335 multi-unit dwellings.
Residential L336	Land accommodating 336 multi-unit dwellings.
Residential L337	Land accommodating 337 multi-unit dwellings.
Residential L338	Land accommodating 338 multi-unit dwellings.

Category	Description
Residential L384	Land accommodating 384 multi-unit dwellings.
Residential L385	Land accommodating 385 multi-unit dwellings.
Residential L386	Land accommodating 386 multi-unit dwellings.
Residential L387	Land accommodating 387 multi-unit dwellings.
Residential L388	Land accommodating 388 multi-unit dwellings.
Residential L389	Land accommodating 389 multi-unit dwellings.
Residential L390	Land accommodating 390 multi-unit dwellings.
Residential L391	Land accommodating 391 multi-unit dwellings.
Residential L392	Land accommodating 392 multi-unit dwellings.
Residential L393	Land accommodating 393 multi-unit dwellings.
Residential L394	Land accommodating 394 multi-unit dwellings.
Residential L395	Land accommodating 395 multi-unit dwellings.
Residential L396	Land accommodating 396 multi-unit dwellings.
Residential L397	Land accommodating 397 multi-unit dwellings.
Residential L398	Land accommodating 398 multi-unit dwellings.
Residential L399	Land accommodating 399 multi-unit dwellings.
Residential L400	Land accommodating 400 multi-unit dwellings.
Residential L401	Land accommodating 401 multi-unit dwellings.
Residential L402	Land accommodating 402 multi-unit dwellings.
Residential L403	Land accommodating 403 multi-unit dwellings.
Residential L404	Land accommodating 404 multi-unit dwellings.
Residential L405	Land accommodating 405 multi-unit dwellings.
Residential L406	Land accommodating 406 multi-unit dwellings.
Residential L407	Land accommodating 407 multi-unit dwellings.
Residential L408	Land accommodating 408 multi-unit dwellings.
Residential L409	Land accommodating 409 multi-unit dwellings.
Residential L410	Land accommodating 410 multi-unit dwellings.
Residential L411	Land accommodating 411 multi-unit dwellings.
Residential L412	Land accommodating 412 multi-unit dwellings.
Residential L413	Land accommodating 413 multi-unit dwellings.
Residential L414	Land accommodating 414 multi-unit dwellings.
Residential L415	Land accommodating 415 multi-unit dwellings.
Residential L416	Land accommodating 416 multi-unit dwellings.
Residential L417	Land accommodating 417 multi-unit dwellings.
Residential L418	Land accommodating 418 multi-unit dwellings.
Residential L419	Land accommodating 419 multi-unit dwellings.
Residential L420	Land accommodating 420 multi-unit dwellings.
Residential L421	Land accommodating 421 multi-unit dwellings.
Residential L422	Land accommodating 422 multi-unit dwellings.
Residential L423	Land accommodating 423 multi-unit dwellings.
Residential L424	Land accommodating 424 multi-unit dwellings.
Residential L425	Land accommodating 425 multi-unit dwellings.
Residential L426	Land accommodating 426 multi-unit dwellings.
Residential L427	Land accommodating 427 multi-unit dwellings.
Residential L428	Land accommodating 428 multi-unit dwellings.

Category	Description
Residential L474	Land accommodating 474 multi-unit dwellings.
Residential L475	Land accommodating 475 multi-unit dwellings.
Residential L476	Land accommodating 476 multi-unit dwellings.
Residential L477	Land accommodating 477 multi-unit dwellings.
Residential L478	Land accommodating 478 multi-unit dwellings.
Residential L479	Land accommodating 479 multi-unit dwellings.
Residential L480	Land accommodating 480 multi-unit dwellings.
Residential L481	Land accommodating 481 multi-unit dwellings.
Residential L482	Land accommodating 482 multi-unit dwellings.
Residential L483	Land accommodating 483 multi-unit dwellings.
Residential L484	Land accommodating 484 multi-unit dwellings.
Residential L485	Land accommodating 485 multi-unit dwellings.
Residential L486	Land accommodating 486 multi-unit dwellings.
Residential L487	Land accommodating 487 multi-unit dwellings.
Residential L488	Land accommodating 488 multi-unit dwellings.
Residential L489	Land accommodating 489 multi-unit dwellings.
Residential L490	Land accommodating 490 multi-unit dwellings.
Residential L491	Land accommodating 491 multi-unit dwellings.
Residential L492	Land accommodating 492 multi-unit dwellings.
Residential M	Residential land that is a relevant parcel for Land Valuation Act section 50
Residential R1	Residential services – Retirement facility
Residential R3	Multi-Unit Residential: Land accommodating 3 independent living units.
Residential R4	Multi-Unit Residential: Land accommodating 4 independent living units.
Residential R5	Multi-Unit Residential: Land accommodating 5 independent living units.
Residential R6	Multi-Unit Residential: Land accommodating 6 independent living units.
Residential R7	Multi-Unit Residential: Land accommodating 7 independent living units.
Residential R8	Multi-Unit Residential: Land accommodating 8 independent living units.
Residential R9	Multi-Unit Residential: Land accommodating 9 independent living units.
Residential R10	Multi-Unit Residential: Land accommodating 10 independent living units.
Residential R11	Multi-Unit Residential: Land accommodating 11 independent living units.
Residential R12	Multi-Unit Residential: Land accommodating 12 independent living units.
Residential R13	Multi-Unit Residential: Land accommodating 13 independent living units.
Residential R14	Multi-Unit Residential: Land accommodating 14 independent living units.
Residential R15	Multi-Unit Residential: Land accommodating 15 independent living units.
Residential R16	Multi-Unit Residential: Land accommodating 16 independent living units.
Residential R17	Multi-Unit Residential: Land accommodating 17 independent living units.
Residential R18	Multi-Unit Residential: Land accommodating 18 independent living units.
Residential R19	Multi-Unit Residential: Land accommodating 19 independent living units.
Residential R20	Multi-Unit Residential: Land accommodating 20 independent living units.
Residential R21	Multi-Unit Residential: Land accommodating 21 independent living units.
Residential R22	Multi-Unit Residential: Land accommodating 22 independent living units.
Residential R23	Multi-Unit Residential: Land accommodating 23 independent living units.
Residential R24	Multi-Unit Residential: Land accommodating 24 independent living units.
Residential R25	Multi-Unit Residential: Land accommodating 25 independent living units.
Residential R26	Multi-Unit Residential: Land accommodating 26 independent living units.

Category	Description
Residential R349	Multi-Unit Residential: Land accommodating 349 independent living units.
Residential R350	Multi-Unit Residential: Land accommodating 350 independent living units.
Residential R351	Multi-Unit Residential: Land accommodating 351 independent living units.
Residential R352	Multi-Unit Residential: Land accommodating 352 independent living units.
Residential R353	Multi-Unit Residential: Land accommodating 353 independent living units.
Residential R354	Multi-Unit Residential: Land accommodating 354 independent living units.
Residential R355	Multi-Unit Residential: Land accommodating 355 independent living units.
Residential R356	Multi-Unit Residential: Land accommodating 356 independent living units.
Residential R357	Multi-Unit Residential: Land accommodating 357 independent living units.
Residential R358	Multi-Unit Residential: Land accommodating 358 independent living units.
Residential R359	Multi-Unit Residential: Land accommodating 359 independent living units.
Residential R360	Multi-Unit Residential: Land accommodating 360 independent living units.
Residential R361	Multi-Unit Residential: Land accommodating 361 independent living units.
Residential R362	Multi-Unit Residential: Land accommodating 362 independent living units.
Residential R363	Multi-Unit Residential: Land accommodating 363 independent living units.
Residential R364	Multi-Unit Residential: Land accommodating 364 independent living units.
Residential R365	Multi-Unit Residential: Land accommodating 365 independent living units.
Residential R366	Multi-Unit Residential: Land accommodating 366 independent living units.
Residential R367	Multi-Unit Residential: Land accommodating 367 independent living units.
Residential R368	Multi-Unit Residential: Land accommodating 368 independent living units.
Residential R369	Multi-Unit Residential: Land accommodating 369 independent living units.
Residential R370	Multi-Unit Residential: Land accommodating 370 independent living units.
Residential R371	Multi-Unit Residential: Land accommodating 371 independent living units.
Residential R372	Multi-Unit Residential: Land accommodating 372 independent living units.
Residential R373	Multi-Unit Residential: Land accommodating 373 independent living units.
Residential R374	Multi-Unit Residential: Land accommodating 374 independent living units.
Residential R375	Multi-Unit Residential: Land accommodating 375 independent living units.
Residential R376	Multi-Unit Residential: Land accommodating 376 independent living units.
Residential R377	Multi-Unit Residential: Land accommodating 377 independent living units.
Residential R378	Multi-Unit Residential: Land accommodating 378 independent living units.
Residential R379	Multi-Unit Residential: Land accommodating 379 independent living units.
Residential R380	Multi-Unit Residential: Land accommodating 380 independent living units.
Commercial B	Major Shopping Centres exceeding 34,999m ² Gross Lettable Area – Retail.
Commercial D	Commercial properties located within the Inner City.
Commercial E	Commercial properties not included in Commercial Categories B, D, F & G.
Commercial F	Properties used by not for profit recreation, sporting and community groups eligible for Rates Based Financial Assistance.
Commercial G	Major Shopping Centres exceeding 20,000m ² but not exceeding 34,999m ² Gross Lettable Area – Retail.
Rural Productive	All properties which are used predominantly for Primary Production.
Other Land	Land not included in any of the above categories.

Land Characteristics for Category Descriptions

For each category described in the above table, the description includes the characteristics shown below for the category:

Note: The zones in CairnsPlan 2016 may be a factor in determining, for relevant categories, whether given parcels match Council use codes 01, 04, 06, 09, and 72.

RESIDENTIAL

Residential A: Residential properties (standard title).

Land in this category has the following characteristics:

- a) it is used solely for a residential purpose, or a residential purpose is potentially its predominant use;
- b) it is not included in a community titles scheme;
- c) it either:
 - i) accommodates a dwelling house; or
 - ii) is vacant land;
- d) it is not included in any other category; and

Properties with the following land use codes fall within this category:

- 01 Vacant urban land (excluding those included in commercial categories D and E);
- 02 Residential single unit dwelling - urban and rural;
- 04 Large homesite - vacant urban and rural (excluding those in commercial categories D and E);
- 05 Large homesite - dwelling - urban and rural;
- 06 Outbuildings (excluding those in commercial categories D and E);
- 09 Group Titles;
- 94 Vacant rural land.

Residential K: Residential properties (community title).

Land in this category has the following characteristics:

- (a) it is used solely for a residential purpose, or a residential purpose is potentially its predominant use;
- (b) it is part of a community titles scheme;
- (c) it is not included in any other category.

Properties with the following land use codes fall within this category:

- 08 Building Units

Each of the 491 categories from Residential L2 (Land accommodating 2 multi-unit dwellings) to Residential L492 (Land accommodating 492 multi-unit dwellings.)

Land in each of these categories has the following characteristics:

- (a) it is used solely for a residential purpose, or a residential purpose is potentially its predominant use; and
- (b) it is not included in any other category

Properties with the following land use code fall within each of these categories:

03 Multi-Unit Dwellings (MUDs)

Residential M: Residential land that is a relevant parcel for Land Valuation Act section 50.

Properties with the following land use code fall within this category:

72 Residential land which is subject to section 50 of the *Land Valuation Act 2010*.

Residential R1: Residential services – Retirement facility

Land in this category has the following characteristics:

- (a) it is used to accommodate older members of the community or retired persons in accommodation units that are not self-contained;
- (b) it is accredited for provision of residential services under the *Residential Services (Accreditation) Act*;
- (c) it is used as a retirement facility, or a retirement facility is potentially its predominant use; and
- (d) it is not included in any other category; and

Properties with the following land use code fall within this category:

21 Residential Institution (non-medical care).

Each of the 378 categories from Residential R3 (Multi unit residential – Land accommodating 3 independent living units) to Residential R380 (Multi unit residential – Land accommodating 380 independent living units)

Land in each of these categories has the following characteristics:

- (a) it is used to accommodate older members of the community (persons aged 50 and above), or retired persons, in independent living units; or
- (b) it is used as a retirement facility, or a retirement facility is potentially its predominant use; and
- (c) it is not included in any other category;

Properties with the following land use code fall within each of these categories:

21 Residential Institutions (non-medical care);

The following land is specifically included in each category:

- a) Retirement villages
- b) Relocatable home parks

COMMERCIAL

Commercial B: Major Shopping Centres exceeding 34,999m² Gross Lettable Area- Retail

Land in this category has the following characteristics:

- (a) it is used for a shopping centre purpose, or a shopping centre is potentially its predominant use;
- (b) the anchor tenants are, or would be, a variety of department store(s) / discount department store(s) and large grocery supermarkets;
- (c) it has, or would have, extensive on site parking facilities; and
- (d) its Gross Lettable Area Retail exceeds 34,999m²

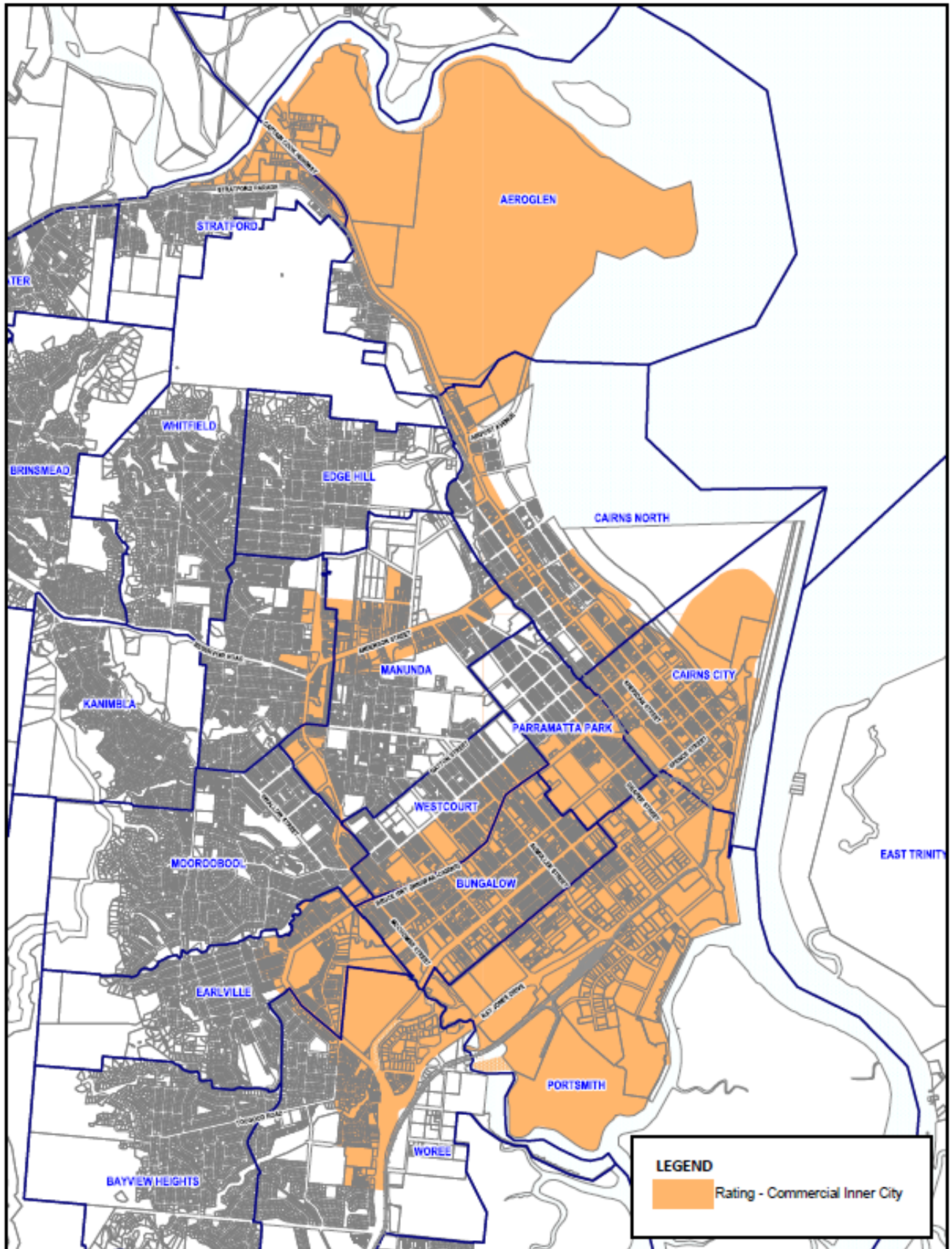
Properties with the following land use codes fall within this category:

- 12 Shopping Group (more than 6 shops);
- 13 Shopping Group (2 to 6 shops);
- 14 Shops Main Retail;
- 15 Shops Secondary Retail;
- 16 Drive-In Shopping Centres.

Commercial D: Commercial Properties located within the Inner City

Land in this category has the following characteristics:

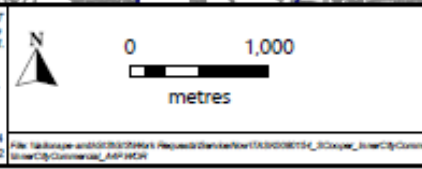
- (a) it is used for commercial / industrial purposes, or commercial / industrial purposes is the potentially its predominant use; and
- (b) it is located within the shaded area on the following map shown as commercial



Cairns Regional Council COPYRIGHT
 This document is and shall remain the property of the Cairns Regional Council. Using or copying this document or any part of it without specific authorization is absolutely prohibited.

DO NOT SCALE

P.O. Box 359 Tel: (07) 4044 3044
 Cairns QLD 4870 Fax: (07) 4044 3022



Cairns Regional Council
 RATING DISTRICT
 COMMERCIAL INNER CITY

Plan No. 1

Author: TM	Date: 15/05/2023	Sheet 1	Rev.
------------	------------------	---------	------

Properties with the following land use codes fall within this category:

- | | | | |
|----|---|----|--|
| 07 | Guest House/Private Hotel; | 32 | Wharves; |
| 08 | Building Units; | 33 | Builders Yard/Contractors Yard; |
| 09 | Group Titles; | 34 | Cold Stores - Iceworks; |
| 10 | Combined Multi Dwelling and Shop; | 35 | General Industry; |
| 11 | Shop - Single; | 36 | Light Industry; |
| 12 | Shops - Shopping group (more than 6 shops, excluding those in Categories B, E and G); | 37 | Noxious/Offensive Industry; |
| 13 | Shopping group (2 to 6 shops, excluding those in Categories B, E and G); | 38 | Advertising - Hoarding; |
| 14 | Shops - Main Retail (excluding those in Categories B, E and G); | 39 | Harbour Industries; |
| 15 | Shops - Secondary Retail (excluding those in Categories B, E and G); | 40 | Extractive; |
| 16 | Drive In Shopping Centres (excluding those in Categories B, E and G); | 41 | Child Care; |
| 17 | Restaurant; | 42 | Hotel/Tavern; |
| 18 | Special Tourist Attraction; | 43 | Motel; |
| 19 | Walkway; | 44 | Nurseries; |
| 20 | Marina; | 45 | Theatres and Cinemas; |
| 22 | Car Park; | 46 | Drive-In Theatre; |
| 23 | Retail Warehouse; | 47 | Licensed Clubs; |
| 24 | Sales Area Outdoor; | 48 | Sports Clubs/Facilities; |
| 25 | Offices; | 49 | Caravan Parks; |
| 26 | Funeral Parlours; | 50 | Other Clubs; Non-Business; |
| 27 | Hospitals; Convalescent Homes (Medical Care) (Private); | 51 | Religious; |
| 28 | Warehouses and Bulk Stores; | 52 | Cemeteries (including Crematoria); |
| 29 | Transport Terminal; | 55 | Library; |
| 30 | Service Station; | 56 | Showgrounds/Racecourses /Airfields; |
| 31 | Oil Depot and Refinery; | 57 | Parks and Gardens; |
| | | 58 | Educational - including Kindergartens; |
| | | 91 | Transformers; |
| | | 92 | Defence Force establishments; |
| | | 95 | Reservoir, Dam, Bores; |
| | | 96 | Public Hospital; |
| | | 97 | Welfare Homes/Institutions; |
| | | 99 | Community Protection Centre. |

Land within the following CairnsPlan land zones is also included in this category:

- (a) Principal, major, district, local, neighbourhood and specialised centre
- (b) Mixed-use precinct 1 & 2
- (c) Low/ medium/ high impact industry
- (d) Waterfront and marine industry
- (e) Strategic port land

The premises match one of the following use codes —

- 01 Vacant urban land;
- 04 Large vacant urban land;
- 06 Outbuildings;
- 09 Group Titles;
- 72 Refer to section 50 of the *Land Valuation Act 2010*.

Commercial E: Commercial properties not included in Commercial Categories B, D, F & G

Land in this category has the following characteristics:

- a) it is used for commercial / industrial purposes, or commercial / industrial purposes is the potentially its predominant use; and
- b) its is not located within the shaded area on the map shown as commercial inner city.
- c) it does not fall into commercial categories B, D, F and G

Properties with the following land use codes fall within this category:

- | | |
|--|---|
| 07 Guest House/Private Hotel; | 33 Builders Yard/Contractors Yard; |
| 08 Building Units; | 34 Cold Stores - Iceworks; |
| 09 Group Titles; | 35 General Industry; |
| 10 Combined Multi Dwelling and Shop; | 36 Light Industry; |
| 11 Shop - Single; | 37 Noxious/Offensive Industry; |
| 12 Shops - Shopping group (more than 6 shops); | 38 Advertising - Hoarding; |
| 13 Shopping group (2 to 6 shops); | 39 Harbour Industries; |
| 14 Shops - Main Retail; | 40 Extractive; |
| 15 Shops - Secondary Retail; | 41 Child Care; |
| 16 Drive In Shopping Centres; | 42 Hotel/Tavern; |
| 17 Restaurant; | 43 Motel; |
| 18 Special Tourist Attraction; | 44 Nurseries; |
| 19 Walkway; | 45 Theatres and Cinemas; |
| 20 Marina; | 46 Drive-In Theatres; |
| 22 Car Park; | 47 Licensed Clubs; |
| 23 Retail Warehouse; | 48 Sports Clubs/Facilities; |
| 24 Sales Area Outdoor; | 49 Caravan Parks; |
| 25 Offices; | 50 Other Clubs; Non-Business; |
| 26 Funeral Parlours; | 51 Religious; |
| 27 Hospitals; Convalescent Homes (Medical Care) (Private); | 52 Cemeteries (including Crematoria); |
| 28 Warehouses and Bulk Stores; | 55 Library; |
| 29 Transport Terminal; | 56 Showgrounds/Racecourses /Airfields; |
| 30 Service Station; | 57 Parks and Gardens; |
| 31 Oil Depots and Refinery; | 58 Educational - including Kindergartens; |
| 32 Wharves; | 91 Transformers; |

- 92 Defence Force establishments;
- 95 Reservoir, Dam, Bores;
- 96 Public Hospital;

- 97 Welfare Homes/Institutions;
- 99 Community Protection Centre.

Land within the following CairnsPlan land zones is also included in this category:

- (a) Principal, major, district, local, neighbourhood and specialised centre;
- (b) Mixed-use precincts 1 & 2;
- (c) Low/ medium/ high impact industry;
- (d) Waterfront and marine industry

The premises match one of the following use codes —

- 01 Vacant urban land
- 04 Large vacant urban land
- 06 Outbuildings
- 09 Group titles
- 72 Residential land subject to Land Valuation Act section 50.

Commercial F: Land used by not-for-profit recreation, sporting, and community groups eligible for Rates Based Financial Assistance.

This category encompasses land owned by persons who qualify for assistance under Council's Rates Based Financial Assistance Policy.

Commercial G: Shopping centres exceeding 20,000m² but not exceeding 34,499m² Gross Lettable Area Retail

Land in this category has the following characteristics:

- (a) it is used for a shopping centre, or a shopping centre is potentially its predominant use;
- (b) the anchor tenants are, or would be, a variety of department store(s) / discount department store(s) and large grocery supermarkets;
- (c) it has, or would have, extensive on site parking facilities; and
- (d) its Gross Lettable Area Retail exceeds 20,000m² but does not exceed 34,499m²

Properties with the following land use codes would fall within this category:

- 12 Shopping Group (more than 6 shops);
- 13 Shopping Group (2 to 6 shops);
- 14 Shops Main Retail;
- 15 Shops Secondary Retail;
- 16 Drive-In Shopping Centres.

RURAL PRODUCTIVE

This category encompasses land that is used for primary production, or for which primary production is potentially the predominant use.

Properties with the following land use codes would fall within this category:

60	Sheep Grazing - Dry;	78	Rice;
61	Sheep Breeding;	79	Orchards;
64	Cattle Grazing - Breeding;	80	Tropical Fruits;
65	Cattle Breeding and Fattening;	81	Pineapples;
66	Cattle Fattening;	82	Vineyards;
67	Goats;	83	Small Crops and Fodder Irrigated;
68	Milk - Quota;	84	Small Crops Fodder Non-irrigated;
69	Milk - No Quota;	85	Pigs;
70	Cream;	86	Horses;
71	Oil Seeds;	87	Poultry;
73	Grains;	88	Forestry and Logs;
74	Turf Farms;	89	Animals Special;
75	Sugar Cane;	93	Peanuts.
76	Tobacco;		
77	Cotton;		

OTHER LAND

This category encompasses land not included in any other category.

2. Resolve to delegate to the Chief Executive Officer the power, pursuant to *Local Government Act 2009* section 257, Council's power under *Local Government Regulation 2012* subsections 81(4) and 81(5) to identify the rating category to which each parcel of rateable land belongs.
3. Resolve:
 - (a) pursuant to section 94 of the *Local Government Act 2009* and section 80 of the *Local Government Regulation 2012*, the differential general rate to be made and levied for each differential general rate category; and
 - (b) pursuant to section 77 of the *Local Government Regulation 2012*, the minimum general rate to be made and levied for each differential general rate category, as follows:

Category	Rate in the dollar	Minimum
Residential A	0.00530700	1,165.50
Residential K	0.00944300	1,165.50
Residential L2	0.00752200	2,331.00
Residential L3	0.00752200	3,496.50
Residential L4	0.00752200	4,662.00
Residential L5	0.00752200	5,827.50
Residential L6	0.00752200	6,993.00
Residential L7	0.00752200	8,158.50

Category	Rate in the dollar	Minimum
Residential L8	0.00752200	9,324.00
Residential L9	0.00752200	10,489.50
Residential L10	0.00752200	11,655.00
Residential L11	0.00752200	12,820.50
Residential L12	0.00752200	13,986.00
Residential L13	0.00752200	15,151.50
Residential L14	0.00752200	16,317.00
Residential L15	0.00752200	17,482.50
Residential L16	0.00752200	18,648.00
Residential L17	0.00752200	19,813.50
Residential L18	0.00752200	20,979.00
Residential L19	0.00752200	22,144.50
Residential L20	0.00752200	23,310.00
Residential L21	0.00752200	24,475.50
Residential L22	0.00752200	25,641.00
Residential L23	0.00752200	26,806.50
Residential L24	0.00752200	27,972.00
Residential L25	0.00752200	29,137.50
Residential L26	0.00752200	30,303.00
Residential L27	0.00752200	31,468.50
Residential L28	0.00752200	32,634.00
Residential L29	0.00752200	33,799.50
Residential L30	0.00752200	34,965.00
Residential L31	0.00752200	36,130.50
Residential L32	0.00752200	37,296.00
Residential L33	0.00752200	38,461.50
Residential L34	0.00752200	39,627.00
Residential L35	0.00752200	40,792.50
Residential L36	0.00752200	41,958.00
Residential L37	0.00752200	43,123.50
Residential L38	0.00752200	44,289.00
Residential L39	0.00752200	45,454.50
Residential L40	0.00752200	46,620.00
Residential L41	0.00752200	47,785.50
Residential L42	0.00752200	48,951.00
Residential L43	0.00752200	50,116.50
Residential L44	0.00752200	51,282.00
Residential L45	0.00752200	52,447.50
Residential L46	0.00752200	53,613.00
Residential L47	0.00752200	54,778.50
Residential L48	0.00752200	55,944.00
Residential L49	0.00752200	57,109.50
Residential L50	0.00752200	58,275.00
Residential L51	0.00752200	59,440.50
Residential L52	0.00752200	60,606.00

Category	Rate in the dollar	Minimum
Residential L53	0.00752200	61,771.50
Residential L54	0.00752200	62,937.00
Residential L55	0.00752200	64,102.50
Residential L56	0.00752200	65,268.00
Residential L57	0.00752200	66,433.50
Residential L58	0.00752200	67,599.00
Residential L59	0.00752200	68,764.50
Residential L60	0.00752200	69,930.00
Residential L61	0.00752200	71,095.50
Residential L62	0.00752200	72,261.00
Residential L63	0.00752200	73,426.50
Residential L64	0.00752200	74,592.00
Residential L65	0.00752200	75,757.50
Residential L66	0.00752200	76,923.00
Residential L67	0.00752200	78,088.50
Residential L68	0.00752200	79,254.00
Residential L69	0.00752200	80,419.50
Residential L70	0.00752200	81,585.00
Residential L71	0.00752200	82,750.50
Residential L72	0.00752200	83,916.00
Residential L73	0.00752200	85,081.50
Residential L74	0.00752200	86,247.00
Residential L75	0.00752200	87,412.50
Residential L76	0.00752200	88,578.00
Residential L77	0.00752200	89,743.50
Residential L78	0.00752200	90,909.00
Residential L79	0.00752200	92,074.50
Residential L80	0.00752200	93,240.00
Residential L81	0.00752200	94,405.50
Residential L82	0.00752200	95,571.00
Residential L83	0.00752200	96,736.50
Residential L84	0.00752200	97,902.00
Residential L85	0.00752200	99,067.50
Residential L86	0.00752200	100,233.00
Residential L87	0.00752200	101,398.50
Residential L88	0.00752200	102,564.00
Residential L89	0.00752200	103,729.50
Residential L90	0.00752200	104,895.00
Residential L91	0.00752200	106,060.50
Residential L92	0.00752200	107,226.00
Residential L93	0.00752200	108,391.50
Residential L94	0.00752200	109,557.00
Residential L95	0.00752200	110,722.50
Residential L96	0.00752200	111,888.00

Category	Rate in the dollar	Minimum
Residential L97	0.00752200	113,053.50
Residential L98	0.00752200	114,219.00
Residential L99	0.00752200	115,384.50
Residential L100	0.00752200	116,550.00
Residential L101	0.00752200	117,715.50
Residential L102	0.00752200	118,881.00
Residential L103	0.00752200	120,046.50
Residential L104	0.00752200	121,212.00
Residential L105	0.00752200	122,377.50
Residential L106	0.00752200	123,543.00
Residential L107	0.00752200	124,708.50
Residential L108	0.00752200	125,874.00
Residential L109	0.00752200	127,039.50
Residential L110	0.00752200	128,205.00
Residential L111	0.00752200	129,370.50
Residential L112	0.00752200	130,536.00
Residential L113	0.00752200	131,701.50
Residential L114	0.00752200	132,867.00
Residential L115	0.00752200	134,032.50
Residential L116	0.00752200	135,198.00
Residential L117	0.00752200	136,363.50
Residential L118	0.00752200	137,529.00
Residential L119	0.00752200	138,694.50
Residential L120	0.00752200	139,860.00
Residential L121	0.00752200	141,025.50
Residential L122	0.00752200	142,191.00
Residential L123	0.00752200	143,356.50
Residential L124	0.00752200	144,522.00
Residential L125	0.00752200	145,687.50
Residential L126	0.00752200	146,853.00
Residential L127	0.00752200	148,018.50
Residential L128	0.00752200	149,184.00
Residential L129	0.00752200	150,349.50
Residential L130	0.00752200	151,515.00
Residential L131	0.00752200	152,680.50
Residential L132	0.00752200	153,846.00
Residential L133	0.00752200	155,011.50
Residential L134	0.00752200	156,177.00
Residential L135	0.00752200	157,342.50
Residential L136	0.00752200	158,508.00
Residential L137	0.00752200	159,673.50
Residential L138	0.00752200	160,839.00
Residential L139	0.00752200	162,004.50
Residential L140	0.00752200	163,170.00
Residential L141	0.00752200	164,335.50

Category	Rate in the dollar	Minimum
Residential L142	0.00752200	165,501.00
Residential L143	0.00752200	166,666.50
Residential L144	0.00752200	167,832.00
Residential L145	0.00752200	168,997.50
Residential L146	0.00752200	170,163.00
Residential L147	0.00752200	171,328.50
Residential L148	0.00752200	172,494.00
Residential L149	0.00752200	173,659.50
Residential L150	0.00752200	174,825.00
Residential L151	0.00752200	175,990.50
Residential L152	0.00752200	177,156.00
Residential L153	0.00752200	178,321.50
Residential L154	0.00752200	179,487.00
Residential L155	0.00752200	180,652.50
Residential L156	0.00752200	181,818.00
Residential L157	0.00752200	182,983.50
Residential L158	0.00752200	184,149.00
Residential L159	0.00752200	185,314.50
Residential L160	0.00752200	186,480.00
Residential L161	0.00752200	187,645.50
Residential L162	0.00752200	188,811.00
Residential L163	0.00752200	189,976.50
Residential L164	0.00752200	191,142.00
Residential L165	0.00752200	192,307.50
Residential L166	0.00752200	193,473.00
Residential L167	0.00752200	194,638.50
Residential L168	0.00752200	195,804.00
Residential L169	0.00752200	196,969.50
Residential L170	0.00752200	198,135.00
Residential L171	0.00752200	199,300.50
Residential L172	0.00752200	200,466.00
Residential L173	0.00752200	201,631.50
Residential L174	0.00752200	202,797.00
Residential L175	0.00752200	203,962.50
Residential L176	0.00752200	205,128.00
Residential L177	0.00752200	206,293.50
Residential L178	0.00752200	207,459.00
Residential L179	0.00752200	208,624.50
Residential L180	0.00752200	209,790.00
Residential L181	0.00752200	210,955.50
Residential L182	0.00752200	212,121.00
Residential L183	0.00752200	213,286.50
Residential L184	0.00752200	214,452.00
Residential L185	0.00752200	215,617.50
Residential L186	0.00752200	216,783.00

Category	Rate in the dollar	Minimum
Residential L187	0.00752200	217,948.50
Residential L188	0.00752200	219,114.00
Residential L189	0.00752200	220,279.50
Residential L190	0.00752200	221,445.00
Residential L191	0.00752200	222,610.50
Residential L192	0.00752200	223,776.00
Residential L193	0.00752200	224,941.50
Residential L194	0.00752200	226,107.00
Residential L195	0.00752200	227,272.50
Residential L196	0.00752200	228,438.00
Residential L197	0.00752200	229,603.50
Residential L198	0.00752200	230,769.00
Residential L199	0.00752200	231,934.50
Residential L200	0.00752200	233,100.00
Residential L201	0.00752200	234,265.50
Residential L202	0.00752200	235,431.00
Residential L203	0.00752200	236,596.50
Residential L204	0.00752200	237,762.00
Residential L205	0.00752200	238,927.50
Residential L206	0.00752200	240,093.00
Residential L207	0.00752200	241,258.50
Residential L208	0.00752200	242,424.00
Residential L209	0.00752200	243,589.50
Residential L210	0.00752200	244,755.00
Residential L211	0.00752200	245,920.50
Residential L212	0.00752200	247,086.00
Residential L213	0.00752200	248,251.50
Residential L214	0.00752200	249,417.00
Residential L215	0.00752200	250,582.50
Residential L216	0.00752200	251,748.00
Residential L217	0.00752200	252,913.50
Residential L218	0.00752200	254,079.00
Residential L219	0.00752200	255,244.50
Residential L220	0.00752200	256,410.00
Residential L221	0.00752200	257,575.50
Residential L222	0.00752200	258,741.00
Residential L223	0.00752200	259,906.50
Residential L224	0.00752200	261,072.00
Residential L225	0.00752200	262,237.50
Residential L226	0.00752200	263,403.00
Residential L227	0.00752200	264,568.50
Residential L228	0.00752200	265,734.00
Residential L229	0.00752200	266,899.50
Residential L230	0.00752200	268,065.00
Residential L231	0.00752200	269,230.50

Category	Rate in the dollar	Minimum
Residential L232	0.00752200	270,396.00
Residential L233	0.00752200	271,561.50
Residential L234	0.00752200	272,727.00
Residential L235	0.00752200	273,892.50
Residential L236	0.00752200	275,058.00
Residential L237	0.00752200	276,223.50
Residential L238	0.00752200	277,389.00
Residential L239	0.00752200	278,554.50
Residential L240	0.00752200	279,720.00
Residential L241	0.00752200	280,885.50
Residential L242	0.00752200	282,051.00
Residential L243	0.00752200	283,216.50
Residential L244	0.00752200	284,382.00
Residential L245	0.00752200	285,547.50
Residential L246	0.00752200	286,713.00
Residential L247	0.00752200	287,878.50
Residential L248	0.00752200	289,044.00
Residential L249	0.00752200	290,209.50
Residential L250	0.00752200	291,375.00
Residential L251	0.00752200	292,540.50
Residential L252	0.00752200	293,706.00
Residential L253	0.00752200	294,871.50
Residential L254	0.00752200	296,037.00
Residential L255	0.00752200	297,202.50
Residential L256	0.00752200	298,368.00
Residential L257	0.00752200	299,533.50
Residential L258	0.00752200	300,699.00
Residential L259	0.00752200	301,864.50
Residential L260	0.00752200	303,030.00
Residential L261	0.00752200	304,195.50
Residential L262	0.00752200	305,361.00
Residential L263	0.00752200	306,526.50
Residential L264	0.00752200	307,692.00
Residential L265	0.00752200	308,857.50
Residential L266	0.00752200	310,023.00
Residential L267	0.00752200	311,188.50
Residential L268	0.00752200	312,354.00
Residential L269	0.00752200	313,519.50
Residential L270	0.00752200	314,685.00
Residential L271	0.00752200	315,850.50
Residential L272	0.00752200	317,016.00
Residential L273	0.00752200	318,181.50
Residential L274	0.00752200	319,347.00
Residential L275	0.00752200	320,512.50
Residential L276	0.00752200	321,678.00

Category	Rate in the dollar	Minimum
Residential L277	0.00752200	322,843.50
Residential L278	0.00752200	324,009.00
Residential L279	0.00752200	325,174.50
Residential L280	0.00752200	326,340.00
Residential L281	0.00752200	327,505.50
Residential L282	0.00752200	328,671.00
Residential L283	0.00752200	329,836.50
Residential L284	0.00752200	331,002.00
Residential L285	0.00752200	332,167.50
Residential L286	0.00752200	333,333.00
Residential L287	0.00752200	334,498.50
Residential L288	0.00752200	335,664.00
Residential L289	0.00752200	336,829.50
Residential L290	0.00752200	337,995.00
Residential L291	0.00752200	339,160.50
Residential L292	0.00752200	340,326.00
Residential L293	0.00752200	341,491.50
Residential L294	0.00752200	342,657.00
Residential L295	0.00752200	343,822.50
Residential L296	0.00752200	344,988.00
Residential L297	0.00752200	346,153.50
Residential L298	0.00752200	347,319.00
Residential L299	0.00752200	348,484.50
Residential L300	0.00752200	349,650.00
Residential L301	0.00752200	350,815.50
Residential L302	0.00752200	351,981.00
Residential L303	0.00752200	353,146.50
Residential L304	0.00752200	354,312.00
Residential L305	0.00752200	355,477.50
Residential L306	0.00752200	356,643.00
Residential L307	0.00752200	357,808.50
Residential L308	0.00752200	358,974.00
Residential L309	0.00752200	360,139.50
Residential L310	0.00752200	361,305.00
Residential L311	0.00752200	362,470.50
Residential L312	0.00752200	363,636.00
Residential L313	0.00752200	364,801.50
Residential L314	0.00752200	365,967.00
Residential L315	0.00752200	367,132.50
Residential L316	0.00752200	368,298.00
Residential L317	0.00752200	369,463.50
Residential L318	0.00752200	370,629.00
Residential L319	0.00752200	371,794.50
Residential L320	0.00752200	372,960.00
Residential L321	0.00752200	374,125.50

Category	Rate in the dollar	Minimum
Residential L322	0.00752200	375,291.00
Residential L323	0.00752200	376,456.50
Residential L324	0.00752200	377,622.00
Residential L325	0.00752200	378,787.50
Residential L326	0.00752200	379,953.00
Residential L327	0.00752200	381,118.50
Residential L328	0.00752200	382,284.00
Residential L329	0.00752200	383,449.50
Residential L330	0.00752200	384,615.00
Residential L331	0.00752200	385,780.50
Residential L332	0.00752200	386,946.00
Residential L333	0.00752200	388,111.50
Residential L334	0.00752200	389,277.00
Residential L335	0.00752200	390,442.50
Residential L336	0.00752200	391,608.00
Residential L337	0.00752200	392,773.50
Residential L338	0.00752200	393,939.00
Residential L339	0.00752200	395,104.50
Residential L340	0.00752200	396,270.00
Residential L341	0.00752200	397,435.50
Residential L342	0.00752200	398,601.00
Residential L343	0.00752200	399,766.50
Residential L344	0.00752200	400,932.00
Residential L345	0.00752200	402,097.50
Residential L346	0.00752200	403,263.00
Residential L347	0.00752200	404,428.50
Residential L348	0.00752200	405,594.00
Residential L349	0.00752200	406,759.50
Residential L350	0.00752200	407,925.00
Residential L351	0.00752200	409,090.50
Residential L352	0.00752200	410,256.00
Residential L353	0.00752200	411,421.50
Residential L354	0.00752200	412,587.00
Residential L355	0.00752200	413,752.50
Residential L356	0.00752200	414,918.00
Residential L357	0.00752200	416,083.50
Residential L358	0.00752200	417,249.00
Residential L359	0.00752200	418,414.50
Residential L360	0.00752200	419,580.00
Residential L361	0.00752200	420,745.50
Residential L362	0.00752200	421,911.00
Residential L363	0.00752200	423,076.50
Residential L364	0.00752200	424,242.00
Residential L365	0.00752200	425,407.50
Residential L366	0.00752200	426,573.00

Category	Rate in the dollar	Minimum
Residential L367	0.00752200	427,738.50
Residential L368	0.00752200	428,904.00
Residential L369	0.00752200	430,069.50
Residential L370	0.00752200	431,235.00
Residential L371	0.00752200	432,400.50
Residential L372	0.00752200	433,566.00
Residential L373	0.00752200	434,731.50
Residential L374	0.00752200	435,897.00
Residential L375	0.00752200	437,062.50
Residential L376	0.00752200	438,228.00
Residential L377	0.00752200	439,393.50
Residential L378	0.00752200	440,559.00
Residential L379	0.00752200	441,724.50
Residential L380	0.00752200	442,890.00
Residential L381	0.00752200	444,055.50
Residential L382	0.00752200	445,221.00
Residential L383	0.00752200	446,386.50
Residential L384	0.00752200	447,552.00
Residential L385	0.00752200	448,717.50
Residential L386	0.00752200	449,883.00
Residential L387	0.00752200	451,048.50
Residential L388	0.00752200	452,214.00
Residential L389	0.00752200	453,379.50
Residential L390	0.00752200	454,545.00
Residential L391	0.00752200	455,710.50
Residential L392	0.00752200	456,876.00
Residential L393	0.00752200	458,041.50
Residential L394	0.00752200	459,207.00
Residential L395	0.00752200	460,372.50
Residential L396	0.00752200	461,538.00
Residential L397	0.00752200	462,703.50
Residential L398	0.00752200	463,869.00
Residential L399	0.00752200	465,034.50
Residential L400	0.00752200	466,200.00
Residential L401	0.00752200	467,365.50
Residential L402	0.00752200	468,531.00
Residential L403	0.00752200	469,696.50
Residential L404	0.00752200	470,862.00
Residential L405	0.00752200	472,027.50
Residential L406	0.00752200	473,193.00
Residential L407	0.00752200	474,358.50
Residential L408	0.00752200	475,524.00
Residential L409	0.00752200	476,689.50
Residential L410	0.00752200	477,855.00
Residential L411	0.00752200	479,020.50

Category	Rate in the dollar	Minimum
Residential L412	0.00752200	480,186.00
Residential L413	0.00752200	481,351.50
Residential L414	0.00752200	482,517.00
Residential L415	0.00752200	483,682.50
Residential L416	0.00752200	484,848.00
Residential L417	0.00752200	486,013.50
Residential L418	0.00752200	487,179.00
Residential L419	0.00752200	488,344.50
Residential L420	0.00752200	489,510.00
Residential L421	0.00752200	490,675.50
Residential L422	0.00752200	491,841.00
Residential L423	0.00752200	493,006.50
Residential L424	0.00752200	494,172.00
Residential L425	0.00752200	495,337.50
Residential L426	0.00752200	496,503.00
Residential L427	0.00752200	497,668.50
Residential L428	0.00752200	498,834.00
Residential L429	0.00752200	499,999.50
Residential L430	0.00752200	501,165.00
Residential L431	0.00752200	502,330.50
Residential L432	0.00752200	503,496.00
Residential L433	0.00752200	504,661.50
Residential L434	0.00752200	505,827.00
Residential L435	0.00752200	506,992.50
Residential L436	0.00752200	508,158.00
Residential L437	0.00752200	509,323.50
Residential L438	0.00752200	510,489.00
Residential L439	0.00752200	511,654.50
Residential L440	0.00752200	512,820.00
Residential L441	0.00752200	513,985.50
Residential L442	0.00752200	515,151.00
Residential L443	0.00752200	516,316.50
Residential L444	0.00752200	517,482.00
Residential L445	0.00752200	518,647.50
Residential L446	0.00752200	519,813.00
Residential L447	0.00752200	520,978.50
Residential L448	0.00752200	522,144.00
Residential L449	0.00752200	523,309.50
Residential L450	0.00752200	524,475.00
Residential L451	0.00752200	525,640.50
Residential L452	0.00752200	526,806.00
Residential L453	0.00752200	527,971.50
Residential L454	0.00752200	529,137.00
Residential L455	0.00752200	530,302.50
Residential L456	0.00752200	531,468.00

Category	Rate in the dollar	Minimum
Residential L457	0.00752200	532,633.50
Residential L458	0.00752200	533,799.00
Residential L459	0.00752200	534,964.50
Residential L460	0.00752200	536,130.00
Residential L461	0.00752200	537,295.50
Residential L462	0.00752200	538,461.00
Residential L463	0.00752200	539,626.50
Residential L464	0.00752200	540,792.00
Residential L465	0.00752200	541,957.50
Residential L466	0.00752200	543,123.00
Residential L467	0.00752200	544,288.50
Residential L468	0.00752200	545,454.00
Residential L469	0.00752200	546,619.50
Residential L470	0.00752200	547,785.00
Residential L471	0.00752200	548,950.50
Residential L472	0.00752200	550,116.00
Residential L473	0.00752200	551,281.50
Residential L474	0.00752200	552,447.00
Residential L475	0.00752200	553,612.50
Residential L476	0.00752200	554,778.00
Residential L477	0.00752200	555,943.50
Residential L478	0.00752200	557,109.00
Residential L479	0.00752200	558,274.50
Residential L480	0.00752200	559,440.00
Residential L481	0.00752200	560,605.50
Residential L482	0.00752200	561,771.00
Residential L483	0.00752200	562,936.50
Residential L484	0.00752200	564,102.00
Residential L485	0.00752200	565,267.50
Residential L486	0.00752200	566,433.00
Residential L487	0.00752200	567,598.50
Residential L488	0.00752200	568,764.00
Residential L489	0.00752200	569,929.50
Residential L490	0.00752200	571,095.00
Residential L491	0.00752200	572,260.50
Residential L492	0.00752200	573,426.00
Residential M	0.00530700	No minimum
Residential R1	0.00628100	1,165.50
Residential R3	0.00752200	1,748.30
Residential R4	0.00752200	2,331.00
Residential R5	0.00752200	2,913.80
Residential R6	0.00752200	3,496.50
Residential R7	0.00752200	4,079.30
Residential R8	0.00752200	4,662.00
Residential R9	0.00752200	5,244.80

Category	Rate in the dollar	Minimum
Residential R10	0.00752200	5,827.50
Residential R11	0.00752200	6,410.30
Residential R12	0.00752200	6,993.00
Residential R13	0.00752200	7,575.80
Residential R14	0.00752200	8,158.50
Residential R15	0.00752200	8,741.30
Residential R16	0.00752200	9,324.00
Residential R17	0.00752200	9,906.80
Residential R18	0.00752200	10,489.50
Residential R19	0.00752200	11,072.30
Residential R20	0.00752200	11,655.00
Residential R21	0.00752200	12,237.80
Residential R22	0.00752200	12,820.50
Residential R23	0.00752200	13,403.30
Residential R24	0.00752200	13,986.00
Residential R25	0.00752200	14,568.80
Residential R26	0.00752200	15,151.50
Residential R27	0.00752200	15,734.30
Residential R28	0.00752200	16,317.00
Residential R29	0.00752200	16,899.80
Residential R30	0.00752200	17,482.50
Residential R31	0.00752200	18,065.30
Residential R32	0.00752200	18,648.00
Residential R33	0.00752200	19,230.80
Residential R34	0.00752200	19,813.50
Residential R35	0.00752200	20,396.30
Residential R36	0.00752200	20,979.00
Residential R37	0.00752200	21,561.80
Residential R38	0.00752200	22,144.50
Residential R39	0.00752200	22,727.30
Residential R40	0.00752200	23,310.00
Residential R41	0.00752200	23,892.80
Residential R42	0.00752200	24,475.50
Residential R43	0.00752200	25,058.30
Residential R44	0.00752200	25,641.00
Residential R45	0.00752200	26,223.80
Residential R46	0.00752200	26,806.50
Residential R47	0.00752200	27,389.30
Residential R48	0.00752200	27,972.00
Residential R49	0.00752200	28,554.80
Residential R50	0.00752200	29,137.50
Residential R51	0.00752200	29,720.30
Residential R52	0.00752200	30,303.00
Residential R53	0.00752200	30,885.80
Residential R54	0.00752200	31,468.50

Category	Rate in the dollar	Minimum
Residential R55	0.00752200	32,051.30
Residential R56	0.00752200	32,634.00
Residential R57	0.00752200	33,216.80
Residential R58	0.00752200	33,799.50
Residential R59	0.00752200	34,382.30
Residential R60	0.00752200	34,965.00
Residential R61	0.00752200	35,547.80
Residential R62	0.00752200	36,130.50
Residential R63	0.00752200	36,713.30
Residential R64	0.00752200	37,296.00
Residential R65	0.00752200	37,878.80
Residential R66	0.00752200	38,461.50
Residential R67	0.00752200	39,044.30
Residential R68	0.00752200	39,627.00
Residential R69	0.00752200	40,209.80
Residential R70	0.00752200	40,792.50
Residential R71	0.00752200	41,375.30
Residential R72	0.00752200	41,958.00
Residential R73	0.00752200	42,540.80
Residential R74	0.00752200	43,123.50
Residential R75	0.00752200	43,706.30
Residential R76	0.00752200	44,289.00
Residential R77	0.00752200	44,871.80
Residential R78	0.00752200	45,454.50
Residential R79	0.00752200	46,037.30
Residential R80	0.00752200	46,620.00
Residential R81	0.00752200	47,202.80
Residential R82	0.00752200	47,785.50
Residential R83	0.00752200	48,368.30
Residential R84	0.00752200	48,951.00
Residential R85	0.00752200	49,533.80
Residential R86	0.00752200	50,116.50
Residential R87	0.00752200	50,699.30
Residential R88	0.00752200	51,282.00
Residential R89	0.00752200	51,864.80
Residential R90	0.00752200	52,447.50
Residential R91	0.00752200	53,030.30
Residential R92	0.00752200	53,613.00
Residential R93	0.00752200	54,195.80
Residential R94	0.00752200	54,778.50
Residential R95	0.00752200	55,361.30
Residential R96	0.00752200	55,944.00
Residential R97	0.00752200	56,526.80
Residential R98	0.00752200	57,109.50
Residential R99	0.00752200	57,692.30

Category	Rate in the dollar	Minimum
Residential R100	0.00752200	58,275.00
Residential R101	0.00752200	58,857.80
Residential R102	0.00752200	59,440.50
Residential R103	0.00752200	60,023.30
Residential R104	0.00752200	60,606.00
Residential R105	0.00752200	61,188.80
Residential R106	0.00752200	61,771.50
Residential R107	0.00752200	62,354.30
Residential R108	0.00752200	62,937.00
Residential R109	0.00752200	63,519.80
Residential R110	0.00752200	64,102.50
Residential R111	0.00752200	64,685.30
Residential R112	0.00752200	65,268.00
Residential R113	0.00752200	65,850.80
Residential R114	0.00752200	66,433.50
Residential R115	0.00752200	67,016.30
Residential R116	0.00752200	67,599.00
Residential R117	0.00752200	68,181.80
Residential R118	0.00752200	68,764.50
Residential R119	0.00752200	69,347.30
Residential R120	0.00752200	69,930.00
Residential R121	0.00752200	70,512.80
Residential R122	0.00752200	71,095.50
Residential R123	0.00752200	71,678.30
Residential R124	0.00752200	72,261.00
Residential R125	0.00752200	72,843.80
Residential R126	0.00752200	73,426.50
Residential R127	0.00752200	74,009.30
Residential R128	0.00752200	74,592.00
Residential R129	0.00752200	75,174.80
Residential R130	0.00752200	75,757.50
Residential R131	0.00752200	76,340.30
Residential R132	0.00752200	76,923.00
Residential R133	0.00752200	77,505.80
Residential R134	0.00752200	78,088.50
Residential R135	0.00752200	78,671.30
Residential R136	0.00752200	79,254.00
Residential R137	0.00752200	79,836.80
Residential R138	0.00752200	80,419.50
Residential R139	0.00752200	81,002.30
Residential R140	0.00752200	81,585.00
Residential R141	0.00752200	82,167.80
Residential R142	0.00752200	82,750.50
Residential R143	0.00752200	83,333.30
Residential R144	0.00752200	83,916.00

Category	Rate in the dollar	Minimum
Residential R145	0.00752200	84,498.80
Residential R146	0.00752200	85,081.50
Residential R147	0.00752200	85,664.30
Residential R148	0.00752200	86,247.00
Residential R149	0.00752200	86,829.80
Residential R150	0.00752200	87,412.50
Residential R151	0.00752200	87,995.30
Residential R152	0.00752200	88,578.00
Residential R153	0.00752200	89,160.80
Residential R154	0.00752200	89,743.50
Residential R155	0.00752200	90,326.30
Residential R156	0.00752200	90,909.00
Residential R157	0.00752200	91,491.80
Residential R158	0.00752200	92,074.50
Residential R159	0.00752200	92,657.30
Residential R160	0.00752200	93,240.00
Residential R161	0.00752200	93,822.80
Residential R162	0.00752200	94,405.50
Residential R163	0.00752200	94,988.30
Residential R164	0.00752200	95,571.00
Residential R165	0.00752200	96,153.80
Residential R166	0.00752200	96,736.50
Residential R167	0.00752200	97,319.30
Residential R168	0.00752200	97,902.00
Residential R169	0.00752200	98,484.80
Residential R170	0.00752200	99,067.50
Residential R171	0.00752200	99,650.30
Residential R172	0.00752200	100,233.00
Residential R173	0.00752200	100,815.80
Residential R174	0.00752200	101,398.50
Residential R175	0.00752200	101,981.30
Residential R176	0.00752200	102,564.00
Residential R177	0.00752200	103,146.80
Residential R178	0.00752200	103,729.50
Residential R179	0.00752200	104,312.30
Residential R180	0.00752200	104,895.00
Residential R181	0.00752200	105,477.80
Residential R182	0.00752200	106,060.50
Residential R183	0.00752200	106,643.30
Residential R184	0.00752200	107,226.00
Residential R185	0.00752200	107,808.80
Residential R186	0.00752200	108,391.50
Residential R187	0.00752200	108,974.30
Residential R188	0.00752200	109,557.00
Residential R189	0.00752200	110,139.80

Category	Rate in the dollar	Minimum
Residential R190	0.00752200	110,722.50
Residential R191	0.00752200	111,305.30
Residential R192	0.00752200	111,888.00
Residential R193	0.00752200	112,470.80
Residential R194	0.00752200	113,053.50
Residential R195	0.00752200	113,636.30
Residential R196	0.00752200	114,219.00
Residential R197	0.00752200	114,801.80
Residential R198	0.00752200	115,384.50
Residential R199	0.00752200	115,967.30
Residential R200	0.00752200	116,550.00
Residential R201	0.00752200	117,132.80
Residential R202	0.00752200	117,715.50
Residential R203	0.00752200	118,298.30
Residential R204	0.00752200	118,881.00
Residential R205	0.00752200	119,463.80
Residential R206	0.00752200	120,046.50
Residential R207	0.00752200	120,629.30
Residential R208	0.00752200	121,212.00
Residential R209	0.00752200	121,794.80
Residential R210	0.00752200	122,377.50
Residential R211	0.00752200	122,960.30
Residential R212	0.00752200	123,543.00
Residential R213	0.00752200	124,125.80
Residential R214	0.00752200	124,708.50
Residential R215	0.00752200	125,291.30
Residential R216	0.00752200	125,874.00
Residential R217	0.00752200	126,456.80
Residential R218	0.00752200	127,039.50
Residential R219	0.00752200	127,622.30
Residential R220	0.00752200	128,205.00
Residential R221	0.00752200	128,787.80
Residential R222	0.00752200	129,370.50
Residential R223	0.00752200	129,953.30
Residential R224	0.00752200	130,536.00
Residential R225	0.00752200	131,118.80
Residential R226	0.00752200	131,701.50
Residential R227	0.00752200	132,284.30
Residential R228	0.00752200	132,867.00
Residential R229	0.00752200	133,449.80
Residential R230	0.00752200	134,032.50
Residential R231	0.00752200	134,615.30
Residential R232	0.00752200	135,198.00
Residential R233	0.00752200	135,780.80
Residential R234	0.00752200	136,363.50

Category	Rate in the dollar	Minimum
Residential R235	0.00752200	136,946.30
Residential R236	0.00752200	137,529.00
Residential R237	0.00752200	138,111.80
Residential R238	0.00752200	138,694.50
Residential R239	0.00752200	139,277.30
Residential R240	0.00752200	139,860.00
Residential R241	0.00752200	140,442.80
Residential R242	0.00752200	141,025.50
Residential R243	0.00752200	141,608.30
Residential R244	0.00752200	142,191.00
Residential R245	0.00752200	142,773.80
Residential R246	0.00752200	143,356.50
Residential R247	0.00752200	143,939.30
Residential R248	0.00752200	144,522.00
Residential R249	0.00752200	145,104.80
Residential R250	0.00752200	145,687.50
Residential R251	0.00752200	146,270.30
Residential R252	0.00752200	146,853.00
Residential R253	0.00752200	147,435.80
Residential R254	0.00752200	148,018.50
Residential R255	0.00752200	148,601.30
Residential R256	0.00752200	149,184.00
Residential R257	0.00752200	149,766.80
Residential R258	0.00752200	150,349.50
Residential R259	0.00752200	150,932.30
Residential R260	0.00752200	151,515.00
Residential R261	0.00752200	152,097.80
Residential R262	0.00752200	152,680.50
Residential R263	0.00752200	153,263.30
Residential R264	0.00752200	153,846.00
Residential R265	0.00752200	154,428.80
Residential R266	0.00752200	155,011.50
Residential R267	0.00752200	155,594.30
Residential R268	0.00752200	156,177.00
Residential R269	0.00752200	156,759.80
Residential R270	0.00752200	157,342.50
Residential R271	0.00752200	157,925.30
Residential R272	0.00752200	158,508.00
Residential R273	0.00752200	159,090.80
Residential R274	0.00752200	159,673.50
Residential R275	0.00752200	160,256.30
Residential R276	0.00752200	160,839.00
Residential R277	0.00752200	161,421.80
Residential R278	0.00752200	162,004.50
Residential R279	0.00752200	162,587.30

Category	Rate in the dollar	Minimum
Residential R280	0.00752200	163,170.00
Residential R281	0.00752200	163,752.80
Residential R282	0.00752200	164,335.50
Residential R283	0.00752200	164,918.30
Residential R284	0.00752200	165,501.00
Residential R285	0.00752200	166,083.80
Residential R286	0.00752200	166,666.50
Residential R287	0.00752200	167,249.30
Residential R288	0.00752200	167,832.00
Residential R289	0.00752200	168,414.80
Residential R290	0.00752200	168,997.50
Residential R291	0.00752200	169,580.30
Residential R292	0.00752200	170,163.00
Residential R293	0.00752200	170,745.80
Residential R294	0.00752200	171,328.50
Residential R295	0.00752200	171,911.30
Residential R296	0.00752200	172,494.00
Residential R297	0.00752200	173,076.80
Residential R298	0.00752200	173,659.50
Residential R299	0.00752200	174,242.30
Residential R300	0.00752200	174,825.00
Residential R301	0.00752200	175,407.80
Residential R302	0.00752200	175,990.50
Residential R303	0.00752200	176,573.30
Residential R304	0.00752200	177,156.00
Residential R305	0.00752200	177,738.80
Residential R306	0.00752200	178,321.50
Residential R307	0.00752200	178,904.30
Residential R308	0.00752200	179,487.00
Residential R309	0.00752200	180,069.80
Residential R310	0.00752200	180,652.50
Residential R311	0.00752200	181,235.30
Residential R312	0.00752200	181,818.00
Residential R313	0.00752200	182,400.80
Residential R314	0.00752200	182,983.50
Residential R315	0.00752200	183,566.30
Residential R316	0.00752200	184,149.00
Residential R317	0.00752200	184,731.80
Residential R318	0.00752200	185,314.50
Residential R319	0.00752200	185,897.30
Residential R320	0.00752200	186,480.00
Residential R321	0.00752200	187,062.80
Residential R322	0.00752200	187,645.50
Residential R323	0.00752200	188,228.30
Residential R324	0.00752200	188,811.00

Category	Rate in the dollar	Minimum
Residential R325	0.00752200	189,393.80
Residential R326	0.00752200	189,976.50
Residential R327	0.00752200	190,559.30
Residential R328	0.00752200	191,142.00
Residential R329	0.00752200	191,724.80
Residential R330	0.00752200	192,307.50
Residential R331	0.00752200	192,890.30
Residential R332	0.00752200	193,473.00
Residential R333	0.00752200	194,055.80
Residential R334	0.00752200	194,638.50
Residential R335	0.00752200	195,221.30
Residential R336	0.00752200	195,804.00
Residential R337	0.00752200	196,386.80
Residential R338	0.00752200	196,969.50
Residential R339	0.00752200	197,552.30
Residential R340	0.00752200	198,135.00
Residential R341	0.00752200	198,717.80
Residential R342	0.00752200	199,300.50
Residential R343	0.00752200	199,883.30
Residential R344	0.00752200	200,466.00
Residential R345	0.00752200	201,048.80
Residential R346	0.00752200	201,631.50
Residential R347	0.00752200	202,214.30
Residential R348	0.00752200	202,797.00
Residential R349	0.00752200	203,379.80
Residential R350	0.00752200	203,962.50
Residential R351	0.00752200	204,545.30
Residential R352	0.00752200	205,128.00
Residential R353	0.00752200	205,710.80
Residential R354	0.00752200	206,293.50
Residential R355	0.00752200	206,876.30
Residential R356	0.00752200	207,459.00
Residential R357	0.00752200	208,041.80
Residential R358	0.00752200	208,624.50
Residential R359	0.00752200	209,207.30
Residential R360	0.00752200	209,790.00
Residential R361	0.00752200	210,372.80
Residential R362	0.00752200	210,955.50
Residential R363	0.00752200	211,538.30
Residential R364	0.00752200	212,121.00
Residential R365	0.00752200	212,703.80
Residential R366	0.00752200	213,286.50
Residential R367	0.00752200	213,869.30
Residential R368	0.00752200	214,452.00
Residential R369	0.00752200	215,034.80

Category	Rate in the dollar	Minimum
Residential R370	0.00752200	215,617.50
Residential R371	0.00752200	216,200.30
Residential R372	0.00752200	216,783.00
Residential R373	0.00752200	217,365.80
Residential R374	0.00752200	217,948.50
Residential R375	0.00752200	218,531.30
Residential R376	0.00752200	219,114.00
Residential R377	0.00752200	219,696.80
Residential R378	0.00752200	220,279.50
Residential R379	0.00752200	220,862.30
Residential R380	0.00752200	221,445.00
Commercial B	0.05934000	1,501,669.70
Commercial D	0.01582300	1,201.10
Commercial E	0.00709700	1,201.10
Commercial F	0.00502500	1,165.50
Commercial G	0.04261300	632,187.20
Rural Productive	0.00846300	1,201.10
Other Land	0.00709700	1,201.10

INTERESTED PARTIES:

Not applicable

EXECUTIVE SUMMARY:

This report provides an update of the differential general rates that will be levied in the 2026/27 financial year.

A 3.95% increase has been applied to the rate in the dollar and minimum differential general rate in all pre-existing categories.

OPTIONS:

Option 1 (Recommended):

That Council:

1. Resolve, pursuant to section 81 of the *Local Government Regulation 2012*, the categories into which rateable land is categorised, the description of those categories and, pursuant to sections 81(4) and 81(5) of the *Local Government Regulation 2012*, the method by which land is to be identified and included in its appropriate category as outlined in the recommendation; and
2. Resolve to delegate to the Chief Executive Officer, pursuant to *Local Government Act 2009* section 257, the power under subsections 81(4) and 81(5) of the *Local Government Regulation 2012*, to identify the rating category to which each parcel of rateable land belongs; and

3. Resolve:

- (a) pursuant to section 94 of the *Local Government Act 2009* and section 80 of the *Local Government Regulation 2012*, the differential general rate to be made and levied for each differential general rate category; and
- (b) pursuant to section 77 of the *Local Government Regulation 2012*, the minimum general rate to be made and levied for each differential general rate category, as outlined in the recommendation.

Option 2:

That Council does not adopt the categories outlined or the differential rates and proposes amendments to any or all of the above.

CONSIDERATIONS:

Statutory:

In formulating the Revenue Statement, Council has complied with the relevant legislative provisions, as follows:

- Adoption of the above rating categories is in accordance with section 94 of the *Local Government Act 2009* and Sections 169 and 172 of the *Local Government Regulation 2012*.
- Adoption of the differential general rate and minimum rate for each rate category contained in the Revenue Statement, and reproduced above, is in accordance with section 94 of the *Local Government Act 2009* and sections 80 and 81 of the *Local Government Regulation 2012*.



Steve Cooper
Executive Manager Revenue & Business Support



Lisa Whitton
Chief Financial Officer