

SEE
INSET A

ELLIS BEACH

DOUBLE
ISLAND

PALM COVE

CLIFTON BEACH

TRINITY BEACH

CORAL
SEA

YORKEYS KNOB

MAREEBA
SHIRE
COUNCIL

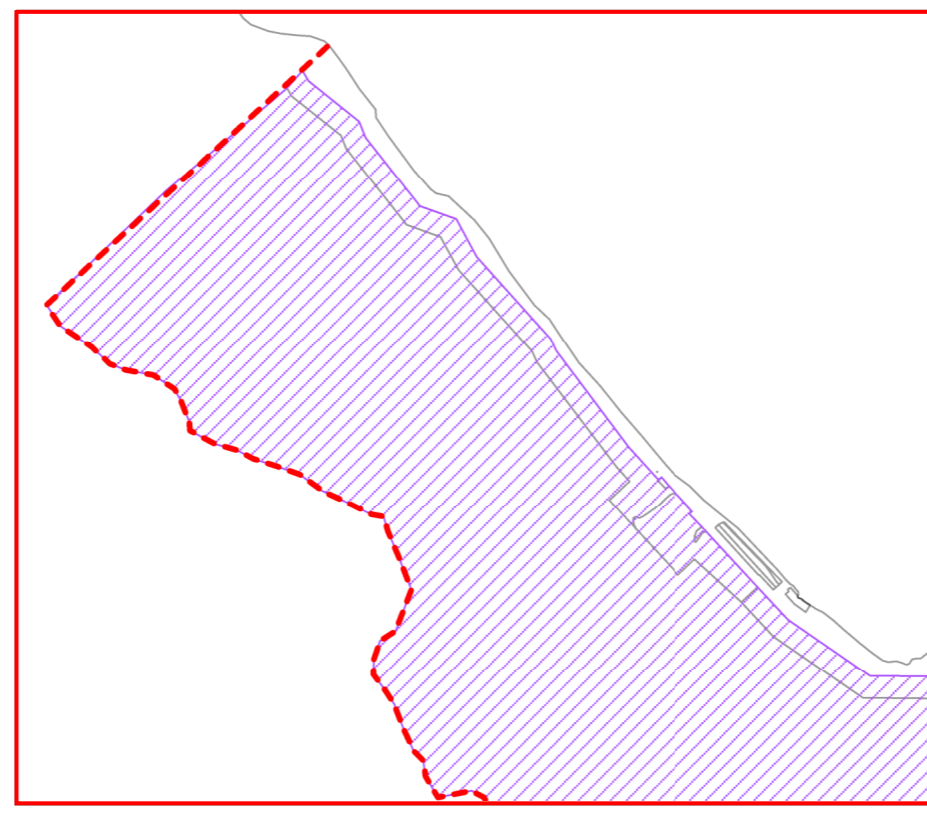
SMITHFIELD

HOLLOWAYS BEACH

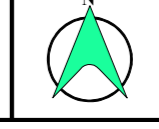
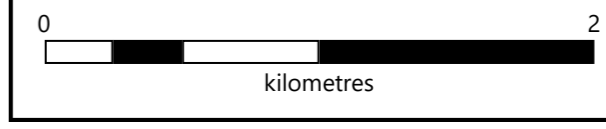
MACHANS BEACH

REDLYNCH

TRINITY
INLET

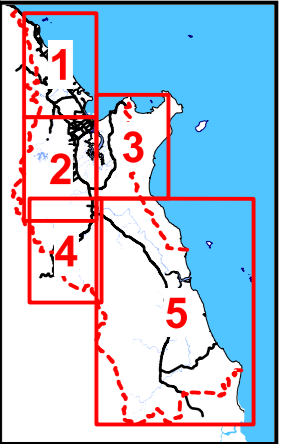


INSET A - ELLIS BEACH



LEGEND

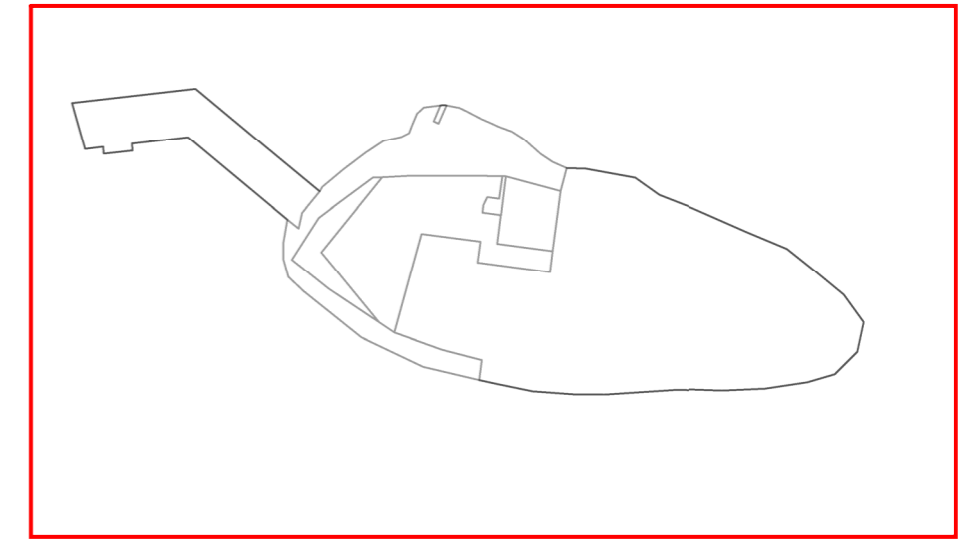
- - - Cairns Regional Council Boundary
- Property Boundary
- Hillslopes area



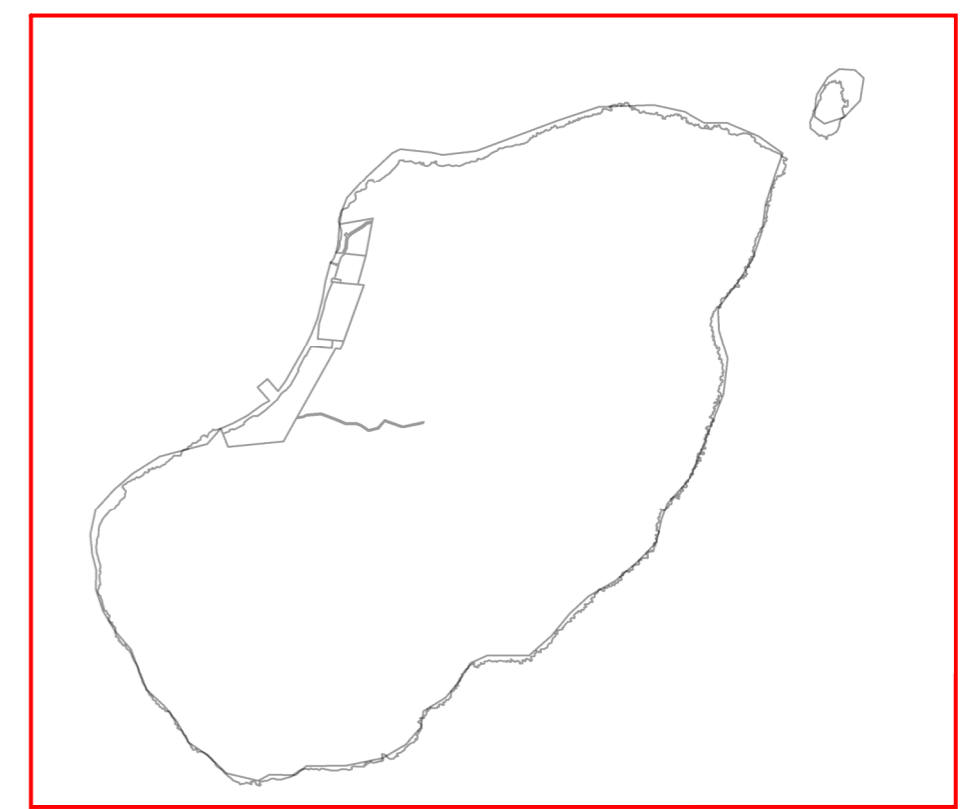
KEY TO SHEETS

Disclaimer:
 While every care is taken to ensure the accuracy of this map, Cairns Regional Council makes no representations or warranties about its accuracy, reliability, completeness or suitability for any particular purpose and disclaims all responsibility and all liability (including without limitation, liability in negligence) for all expenses, losses, damages (including indirect or consequential damage) and costs which might occur as a result of the data being inaccurate or incomplete in any way and for any reason.
 ©Copyright Cairns Regional Council 2020

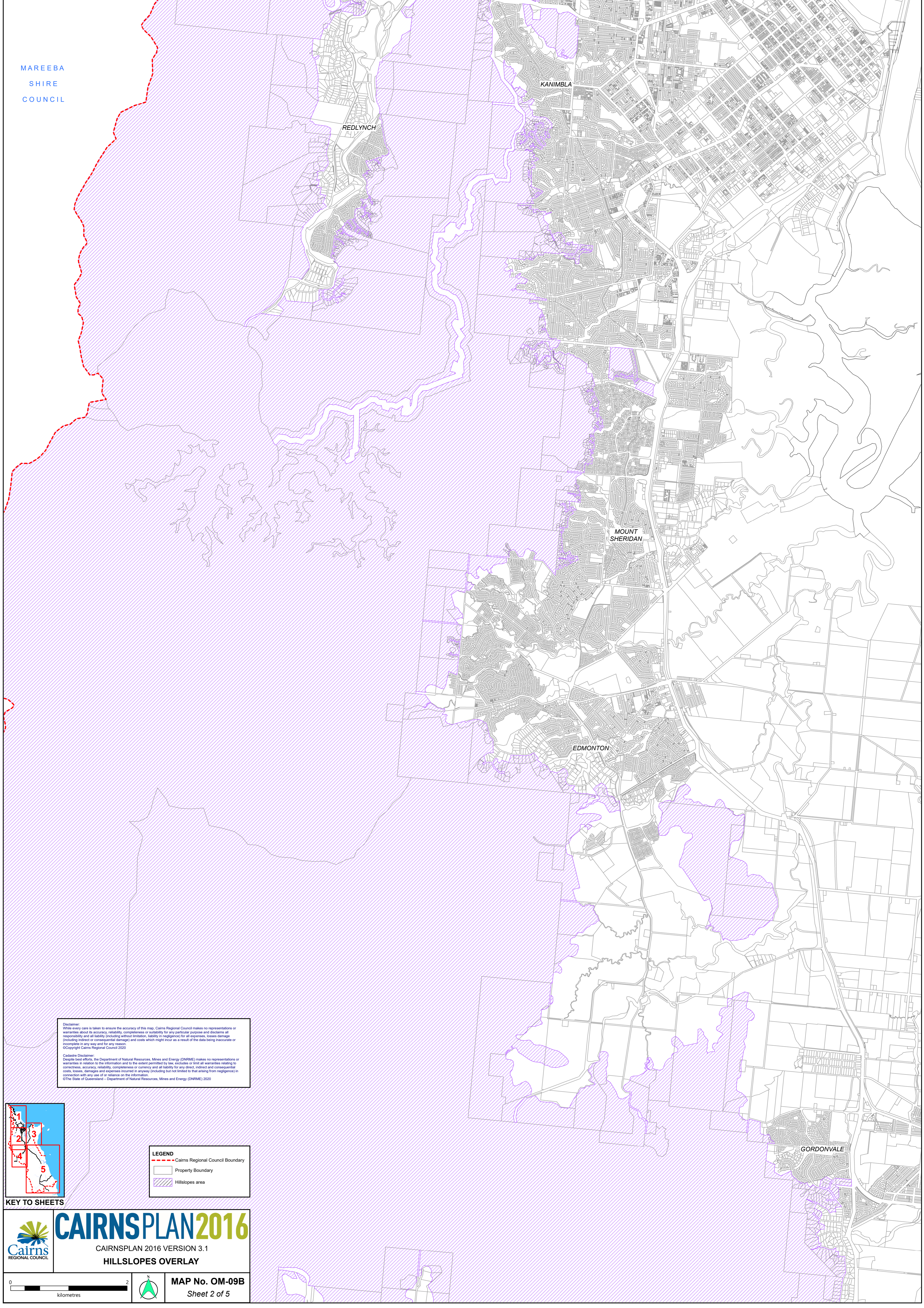
Cadastre Disclaimer:
 Despite best efforts, the Department of Natural Resources, Mines and Energy (DNRM) makes no representations or warranties in relation to the information and to the extent permitted by law, excludes or limit all warranties relating to correctness, accuracy, reliability, completeness or currency and all liability for any direct, indirect and consequential costs, losses, damages and expenses incurred in anyway (including but not limited to that arising from negligence) in connection with any use of or reliance on the information.
 ©The State of Queensland - Department of Natural Resources, Mines and Energy (DNRM) 2020



INSET B - GREEN ISLAND

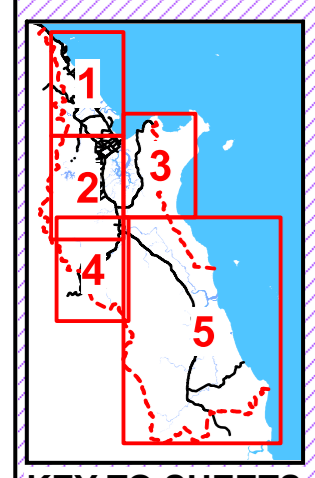


INSET C - FITZROY ISLAND



Disclaimer:
While every care is taken to ensure the accuracy of this map, Cairns Regional Council makes no representations or warranties about its accuracy, reliability, completeness or suitability for any particular purpose and disclaims all responsibility and all liability (including without limitation, liability in negligence) for all expenses, losses, damage (including indirect or consequential damage) and costs which might incur as a result of the data being inaccurate or incomplete in any way and for any reason.
©Copyright Cairns Regional Council 2020


Cadastral Disclaimer:
Despite best efforts, the Department of Natural Resources, Mines and Energy (DNRM) makes no representations or warranties in relation to the information and to the extent permitted by law, excludes or limit all warranties relating to correctness, accuracy, reliability, completeness or currency and all liability for any direct, indirect and consequential costs, losses, damages and expenses incurred in anyway (including but not limited to that arising from negligence) in connection with any use of or reliance on the information.
©The State of Queensland - Department of Natural Resources, Mines and Energy (DNRM) 2020




KEY TO SHEETS

LEGEND

- Cairns Regional Council Boundary
- Property Boundary
- ▨ Hillslopes area

 **CAIRNSPLAN2016**
CAIRNSPLAN 2016 VERSION 3.1
HILLSLOPES OVERLAY

0 2
kilometres

 **MAP No. OM-09B**
Sheet 2 of 5

TRINITY
INLET

EAST
TRINITY

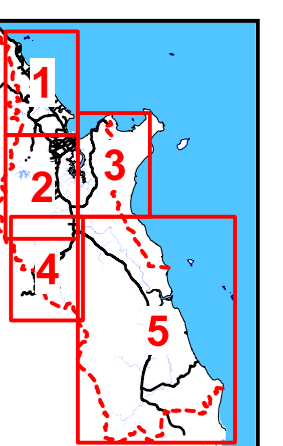
YARRABAH
SHIRE
COUNCIL

CORAL
SEA

Disclaimer:
While every care is taken to ensure the accuracy of this map, Cairns Regional Council makes no representations or warranties about its accuracy, reliability, completeness or suitability for any particular purpose and disclaims all responsibility and all liability (including without limitation, liability in negligence) for all expenses, losses, damage (including indirect or consequential damage) and costs which might incur as a result of the data being inaccurate or incomplete in any way and for any reason.
©Copyright Cairns Regional Council 2020

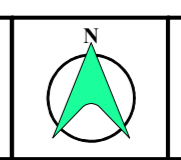
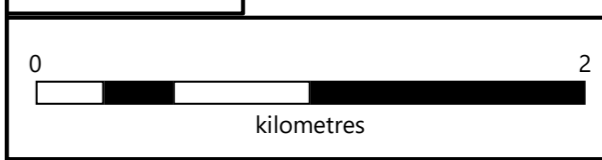
Cadastral Disclaimer:
Despite best efforts, the Department of Natural Resources, Mines and Energy (DNRM) makes no representations or warranties in relation to the information and to the extent permitted by law, excludes or limits all warranties relating to correctness, accuracy, reliability, completeness or currency and all liability for any direct, indirect and consequential costs, losses, damages and expenses incurred in anyway (including but not limited to that arising from negligence) in connection with any use of or reliance on the information.
©The State of Queensland - Department of Natural Resources, Mines and Energy (DNRM) 2020

LEGEND
--- Cairns Regional Council Boundary
□ Property Boundary
▨ Hillslopes area

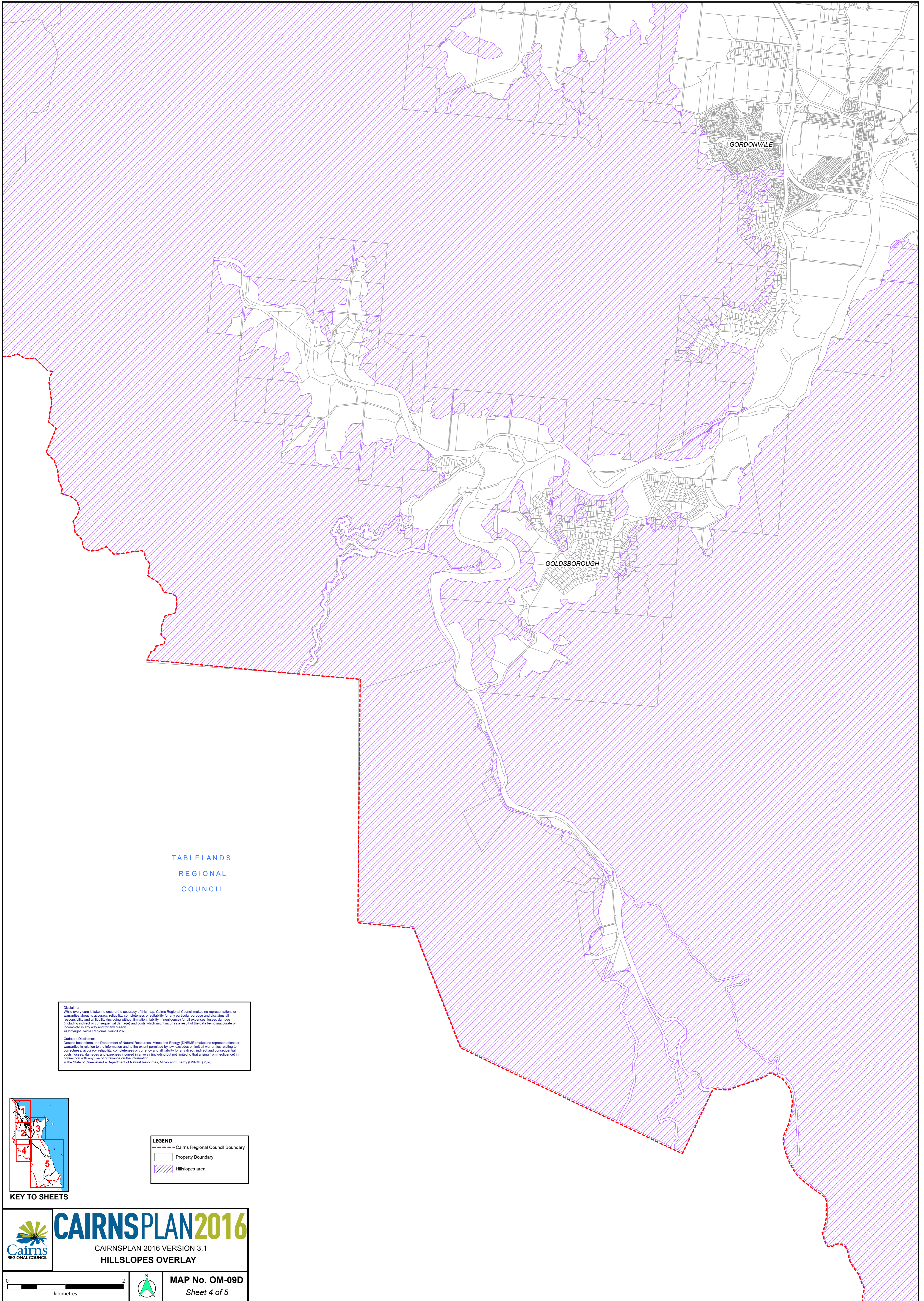


KEY TO SHEETS

 **CAIRNSPLAN2016**
CAIRNSPLAN 2016 VERSION 3.1
HILLSLOPES OVERLAY



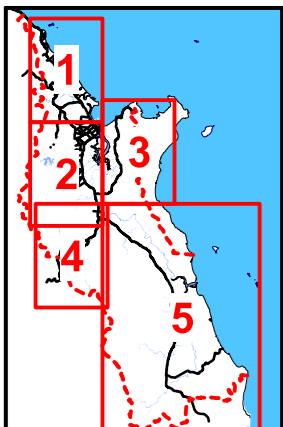
MAP No. OM-09C
Sheet 3 of 5



TABLELANDS
REGIONAL
COUNCIL

Disclaimer:
While every care is taken to ensure the accuracy of this map, Cairns Regional Council makes no representations or warranties about its accuracy, reliability, completeness or suitability for any particular purpose and disclaims all responsibility and all liability (including without limitation, liability in negligence) for all expenses, losses, damage (including indirect or consequential damage) and costs which might incur as a result of the data being inaccurate or incomplete in any way and for any reason.
©Copyright Cairns Regional Council 2020

Disclaimer:
Despite best efforts, the Department of Natural Resources, Mines and Energy (DNRM) makes no representations or warranties in relation to the information and to the extent permitted by law, excludes or limit all warranties relating to correctness, accuracy, reliability, completeness or currency and all liability for any direct, indirect and consequential costs, losses, damages and expenses incurred in anyway (including but not limited to that arising from negligence) in connection with any use of or reliance on the information.
©The State of Queensland – Department of Natural Resources, Mines and Energy (DNRM) 2020



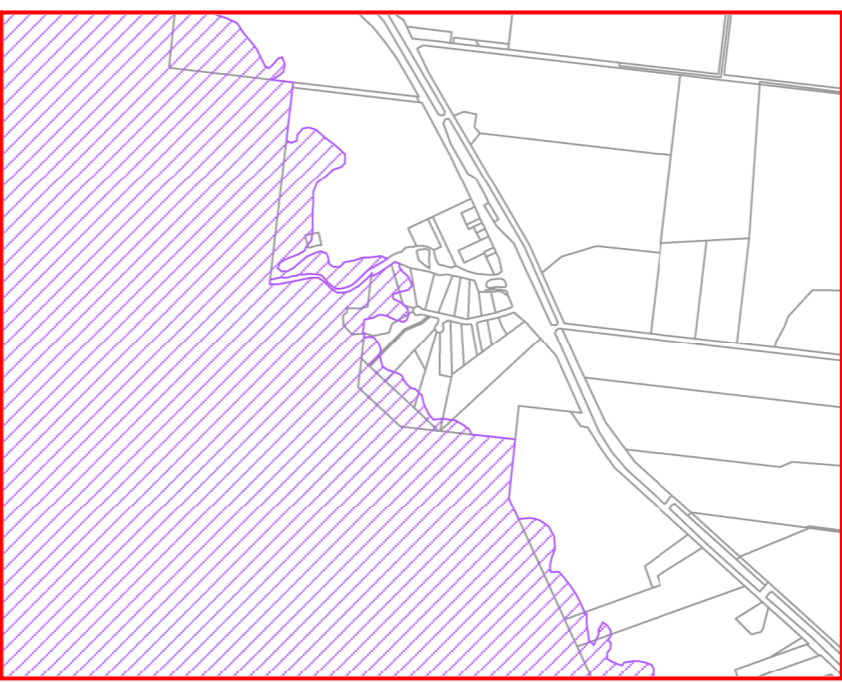
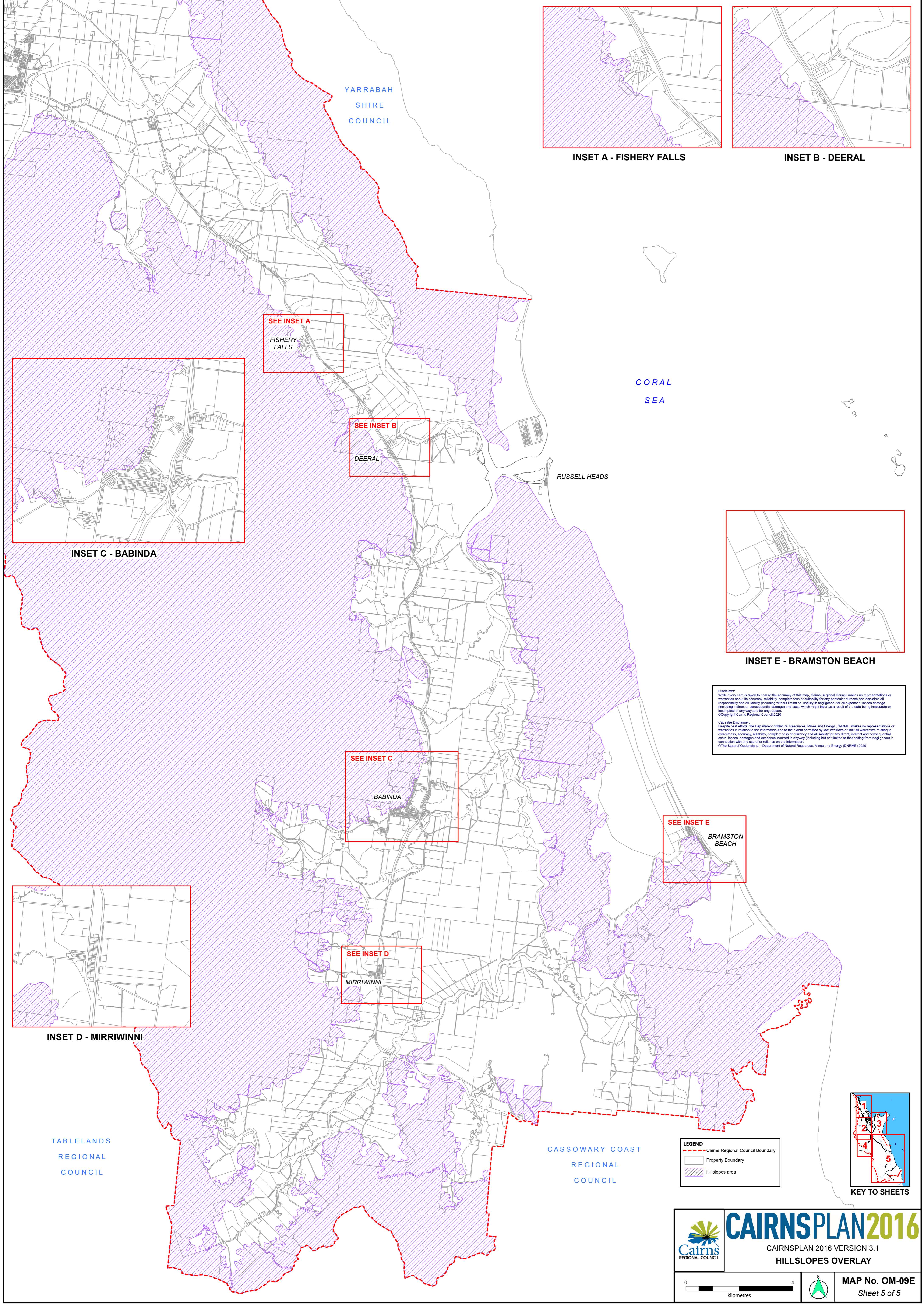
KEY TO SHEETS

LEGEND	
	Cairns Regional Council Boundary
	Property Boundary
	Hillslopes area

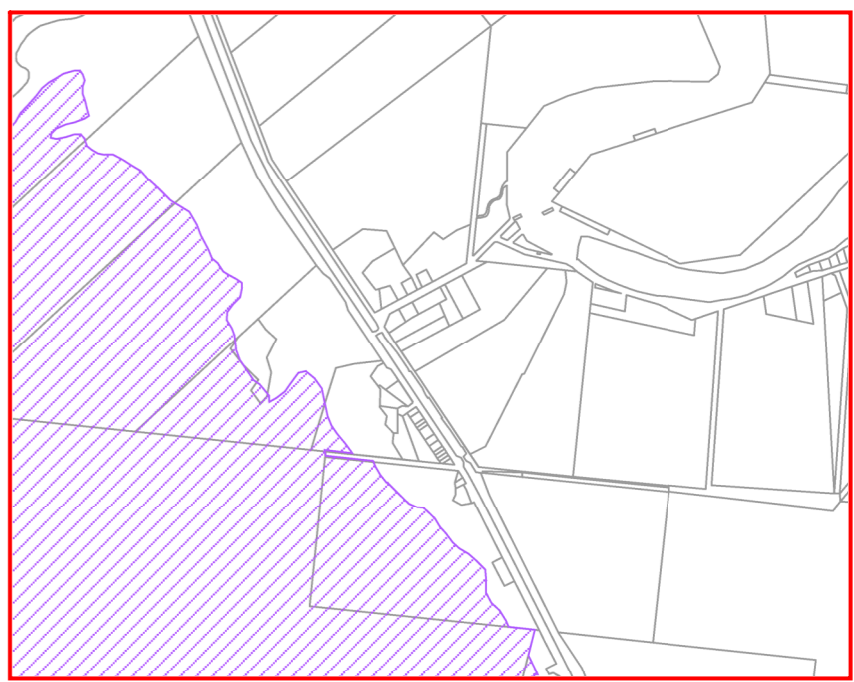
CAIRNSPLAN2016
CAIRNSPLAN 2016 VERSION 3.1
HILLSLOPES OVERLAY



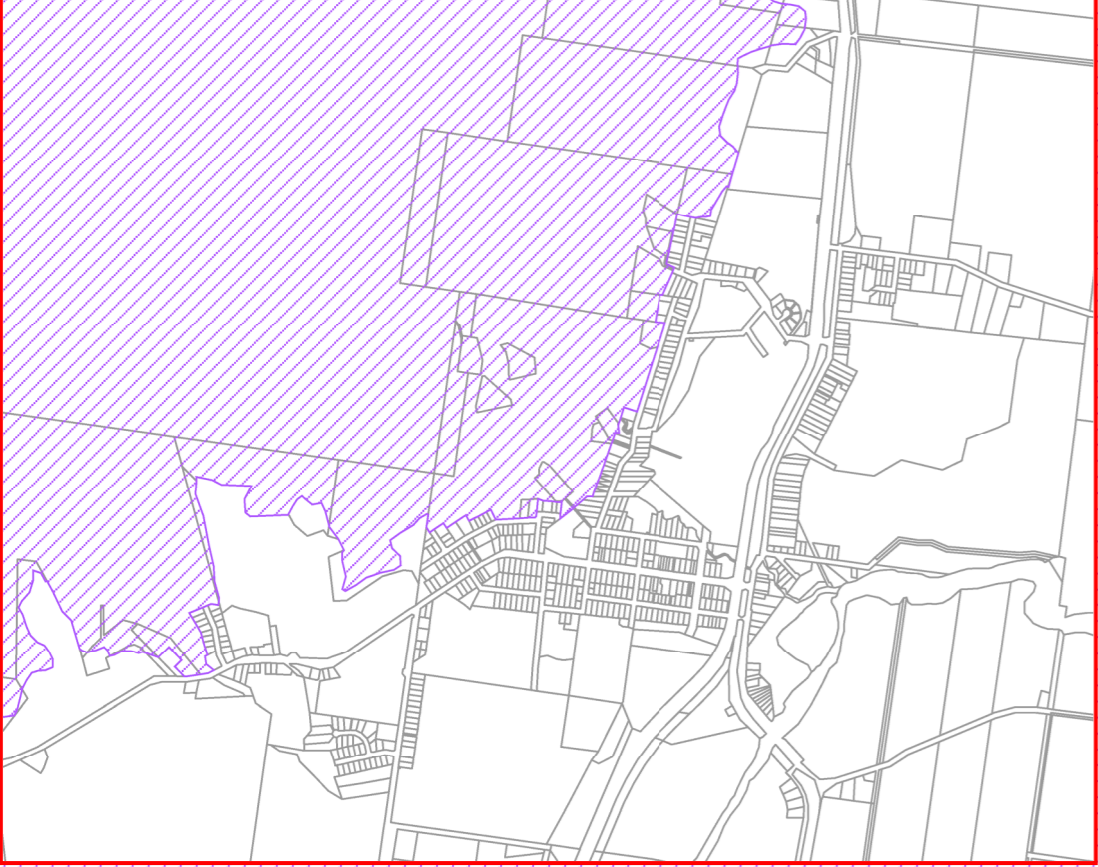
MAP No. OM-09D
Sheet 4 of 5



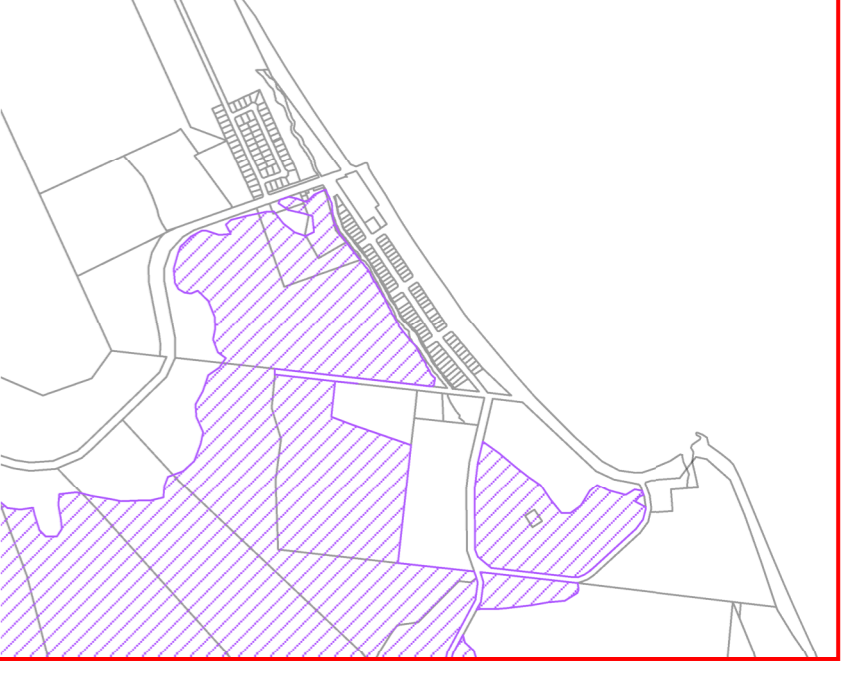
INSET A - FISHERY FALLS



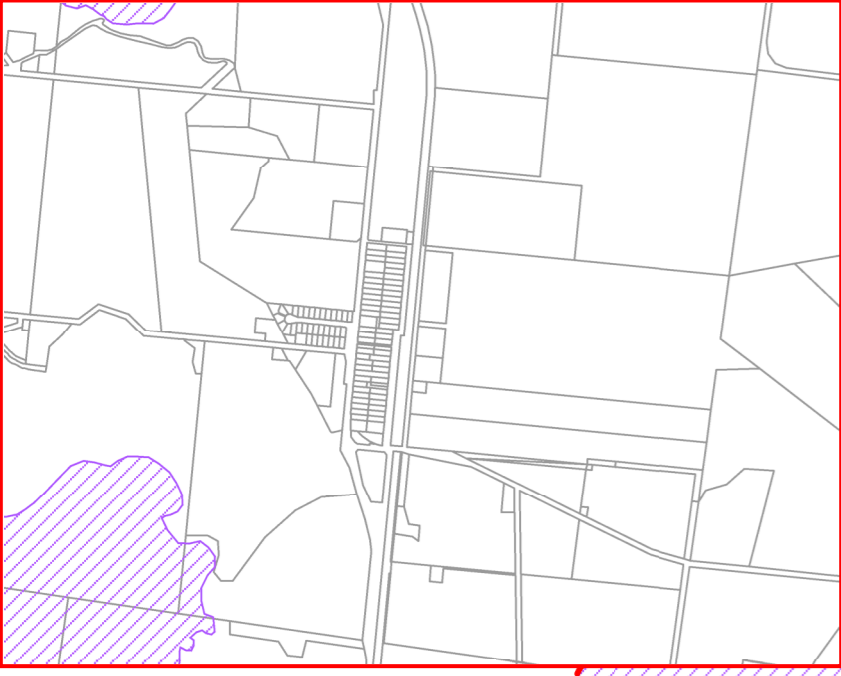
INSET B - DEERAL



INSET C - BABINDA



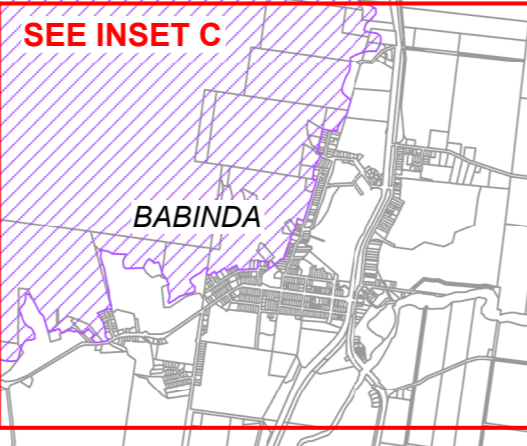
INSET E - BRAMSTON BEACH



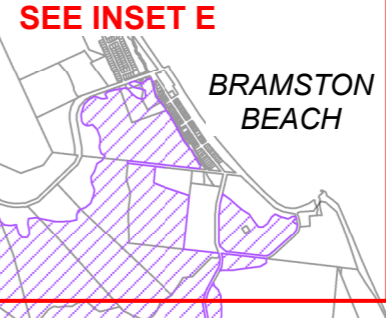
INSET D - MIRRIWINNI

Disclaimer:
 While every care is taken to ensure the accuracy of this map, Cairns Regional Council makes no representations or warranties about its accuracy, reliability, completeness or suitability for any particular purpose and disclaims all responsibility and all liability (including without limitation, liability in negligence) for all expenses, losses, damages (including indirect or consequential damage) and costs which might incur as a result of the data being inaccurate or incomplete in any way and for any reason.
 ©Copyright Cairns Regional Council 2020

Cadastral Disclaimer:
 Despite best efforts, the Department of Natural Resources, Mines and Energy (DNRM) makes no representations or warranties in relation to the information and to the extent permitted by law, excludes or limit all warranties relating to correctness, accuracy, reliability, completeness or currency and all liability for any direct, indirect and consequential costs, losses, damages and expenses incurred in anyway (including but not limited to that arising from negligence) in connection with any use of or reliance on the information.
 ©The State of Queensland - Department of Natural Resources, Mines and Energy (DNRM) 2020



SEE INSET C



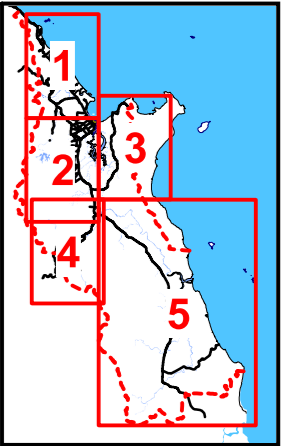
SEE INSET E




SEE INSET D

LEGEND

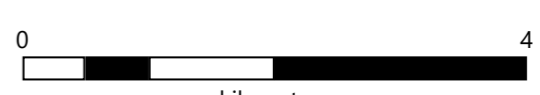
- Cairns Regional Council Boundary
- Property Boundary
- Hillslopes area




KEY TO SHEETS



CAIRNSPLAN2016
 CAIRNSPLAN 2016 VERSION 3.1
 HILLSLOPES OVERLAY



0 4
kilometres



MAP No. OM-09E
 Sheet 5 of 5