

SETTLEMENT PATTERN

- Urban
- Future urban
- Rural residential
- Rural
- Environmental
- Southern growth corridor

ACTIVITY CENTRES

- Principal activity centre
- Major activity centre
- District activity centre

Disclaimer:
While every care is taken to ensure the accuracy of this map, Cairns Regional Council makes no representations or warranties about its accuracy, reliability, completeness or suitability for any particular purpose and disclaims all responsibility and all liability (including without limitation, liability in negligence) for all expenses, losses, damage (including indirect or consequential damage) and costs which might incur as a result of the data being inaccurate or incomplete in any way and for any reason.
© Copyright Cairns Regional Council 2017

Cadastral Disclaimer:
Despite Department of Natural Resources and Mines (DNRM)'s best efforts, DNRM makes no representations or warranties in relation to the information and to the extent permitted by law, excludes or limit all warranties relating to correctness, accuracy, reliability, completeness or currency and all liability for any direct, indirect and consequential costs, losses, damages and expenses incurred in any way (including but not limited to that arising from negligence) in connection with any use of or reliance on the information.
© The State of Queensland - Dept of Natural Resources and Mines (DNRM) 2017



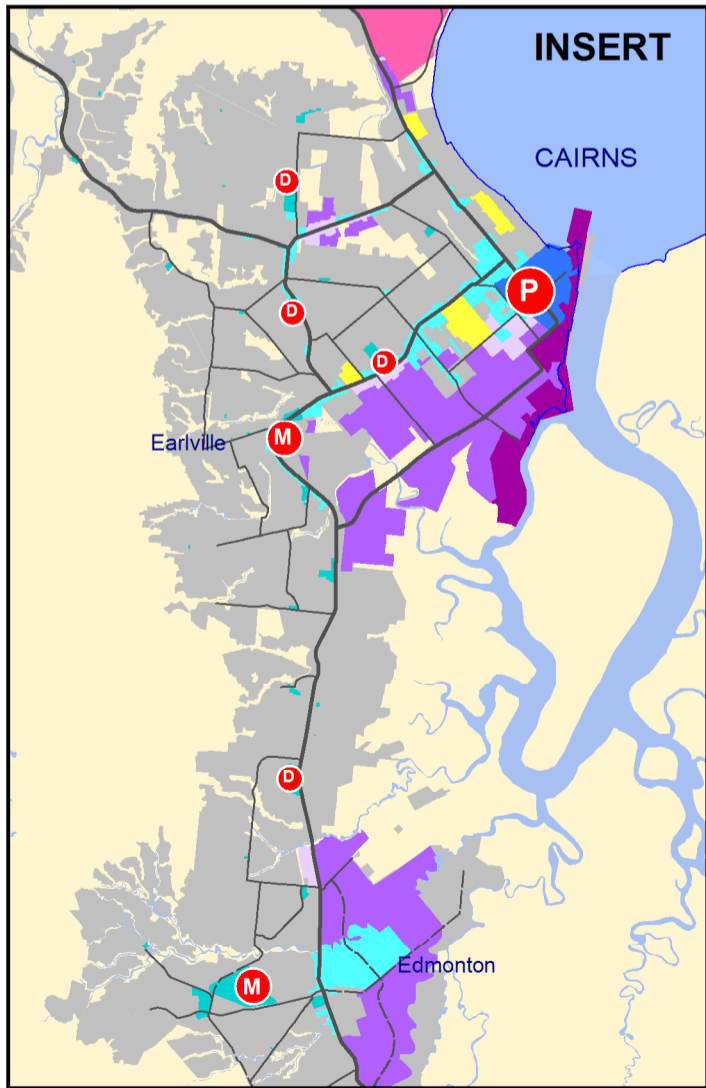
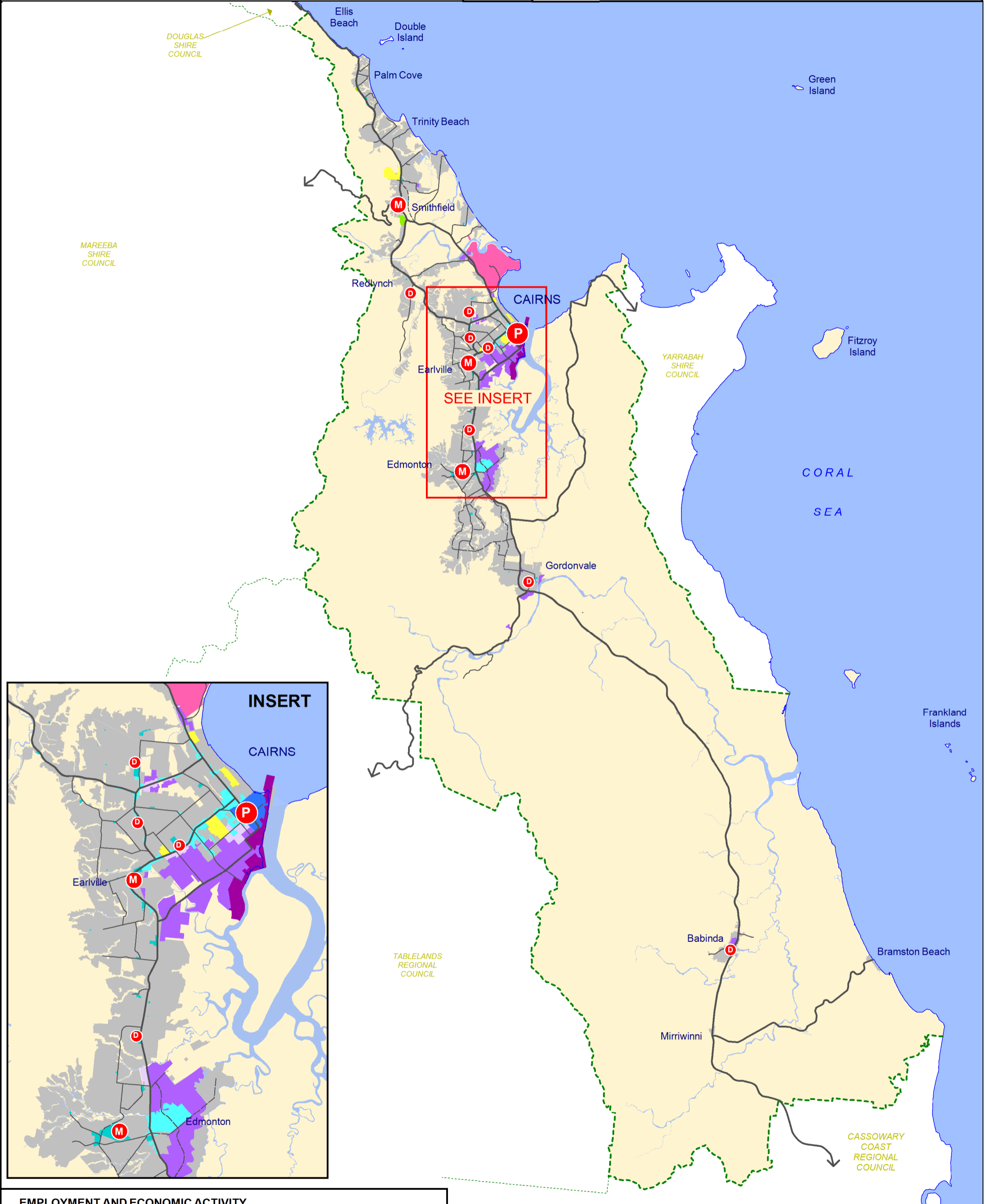
0 7.5 15

Kilometres

Scale - 1:260,000 (@ A3 size)

Date
01/07/2017

Map Number: **SFM-01**



EMPLOYMENT AND ECONOMIC ACTIVITY

- | | |
|------------------|---------------------|
| City centre | Trades and Services |
| Activity centres | Industry |
| Commercial | Cairns Airport |
| Tourism | Port of Cairns |
| Special centres | Urban area |

ACTIVITY CENTRES

- Principal activity centre
- Major activity centre
- District activity centre

Disclaimer:
 While every care is taken to ensure the accuracy of this map, Cairns Regional Council makes no representations or warranties about its accuracy, reliability, completeness or suitability for any particular purpose and disclaims all responsibility and all liability (including without limitation, liability in negligence) for all expenses, losses, damage (including indirect or consequential damage) and costs which might incur as a result of the data being inaccurate or incomplete in any way and for any reason.
 © Copyright Cairns Regional Council 2017

Cadastre Disclaimer:
 Despite Department of Natural Resources and Mines (DNRm)'s best efforts, DNRm makes no representations or warranties in relation to the information and to the extent permitted by law, excludes or limit all warranties relating to correctness, accuracy, reliability, completeness or currency and all liability for any direct, indirect and consequential costs, losses, damages and expenses incurred in any way (including but not limited to that arising from negligence) in connection with any use of or reliance on the information.
 © The State of Queensland - Dept of Natural Resources and Mines (DNRm) 2017



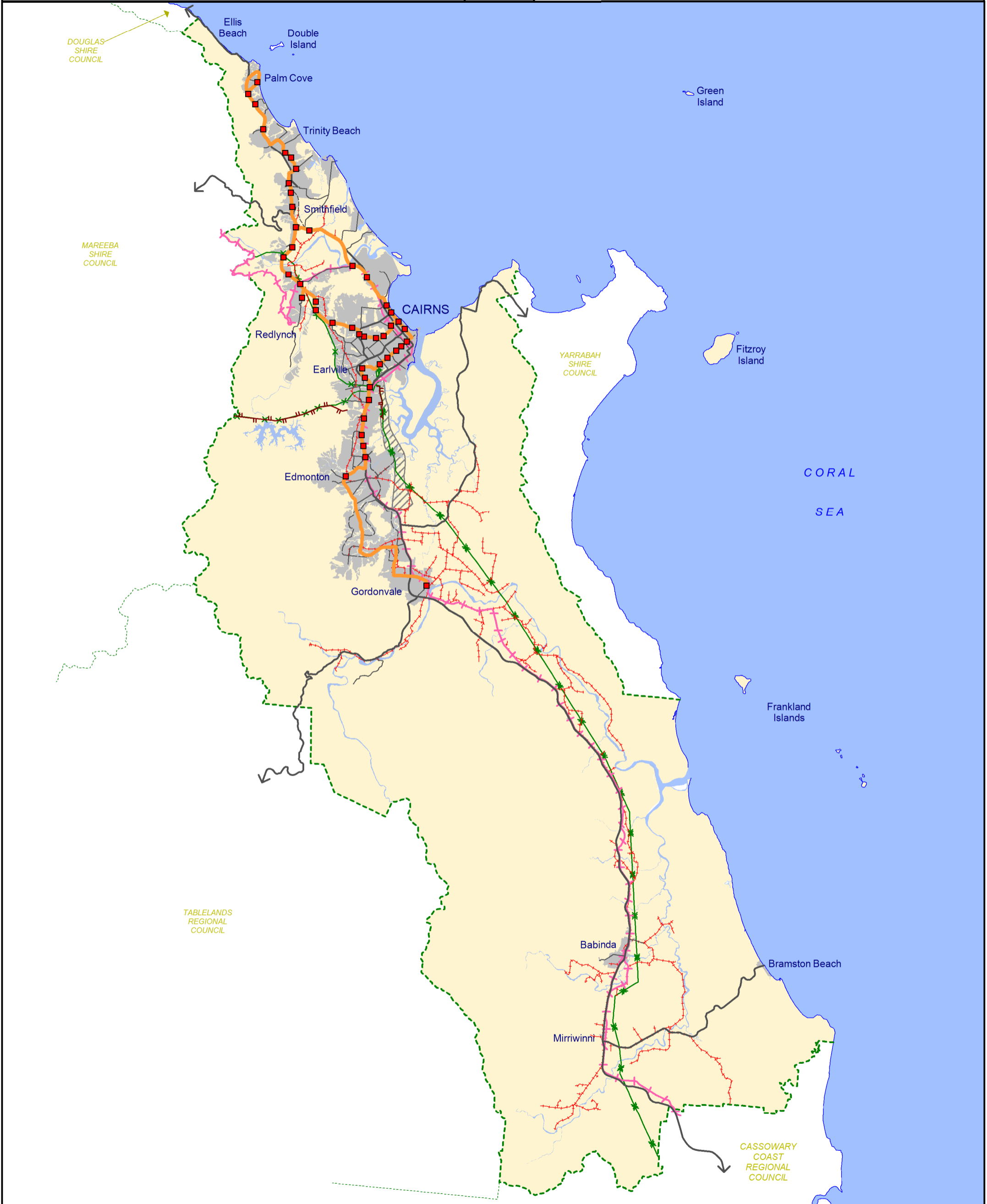
0 7.5 15

Kilometres

Scale - 1:260,000 (@ A3 size)

Date
01/07/2017

Map Number: **SFM-02**



- | | | | |
|--|------------------------|--|--|
| | Major road | | Urban area |
| | Other road | | Transport investigation corridor |
| | Public transport route | | Electricity structure feeder 275kV |
| | State railway | | Electricity structure feeder 110-132kV |
| | Cane tramline | | Public transport station |

Disclaimer:
 While every care is taken to ensure the accuracy of this map, Cairns Regional Council makes no representations or warranties about its accuracy, reliability, completeness or suitability for any particular purpose and disclaims all responsibility and all liability (including without limitation, liability in negligence) for all expenses, losses, damage (including indirect or consequential damage) and costs which might incur as a result of the data being inaccurate or incomplete in any way and for any reason.
 © Copyright Cairns Regional Council 2017

Cadastral Disclaimer:
 Despite Department of Natural Resources and Mines (DNRM)'s best efforts, DNRM makes no representations or warranties in relation to the information and to the extent permitted by law, excludes or limit all warranties relating to correctness, accuracy, reliability, completeness or currency and all liability for any direct, indirect and consequential costs, losses, damages and expenses incurred in any way (including but not limited to that arising from negligence) in connection with any use of or reliance on the information.
 © The State of Queensland - Dept of Natural Resources and Mines (DNRM) 2017

 N	0 7.5 15 Kilometres Scale - 1:260,000 (@ A3 size)
	Date 01/07/2017