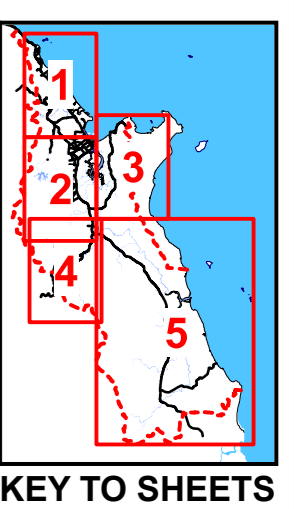
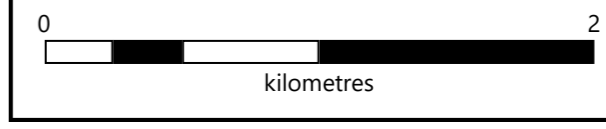


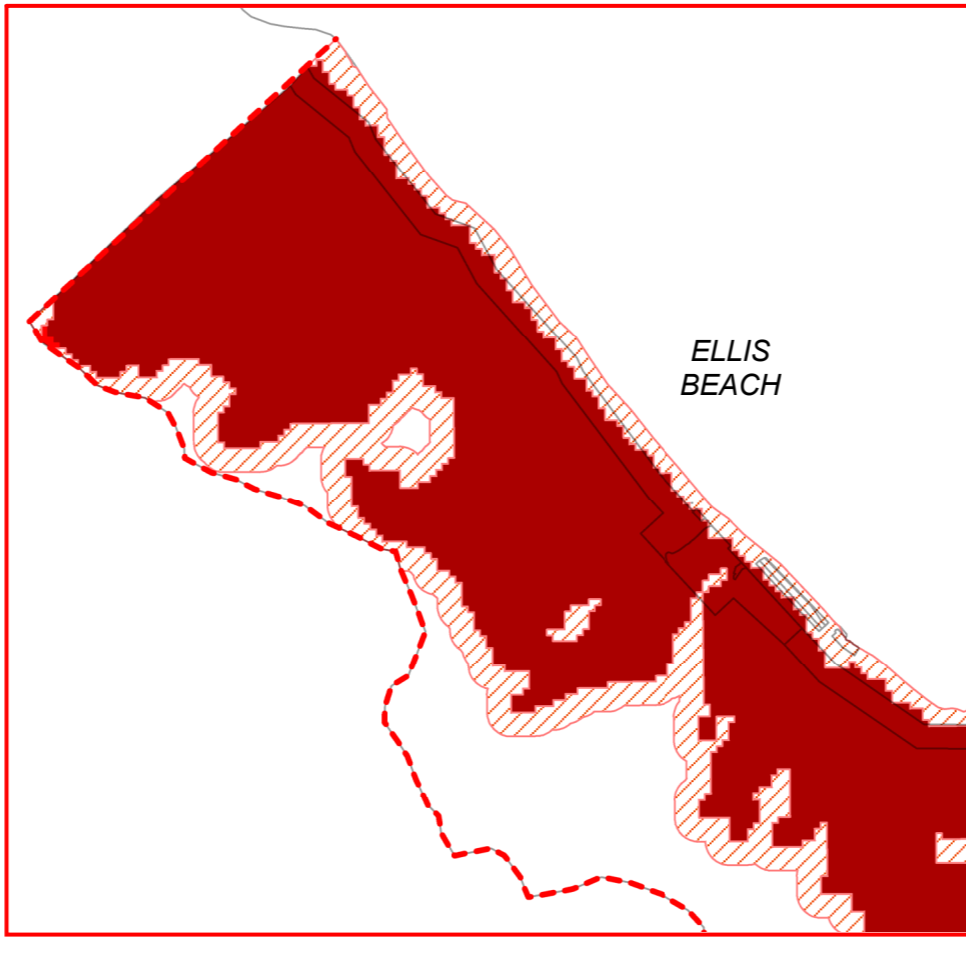
SEE
INSET A



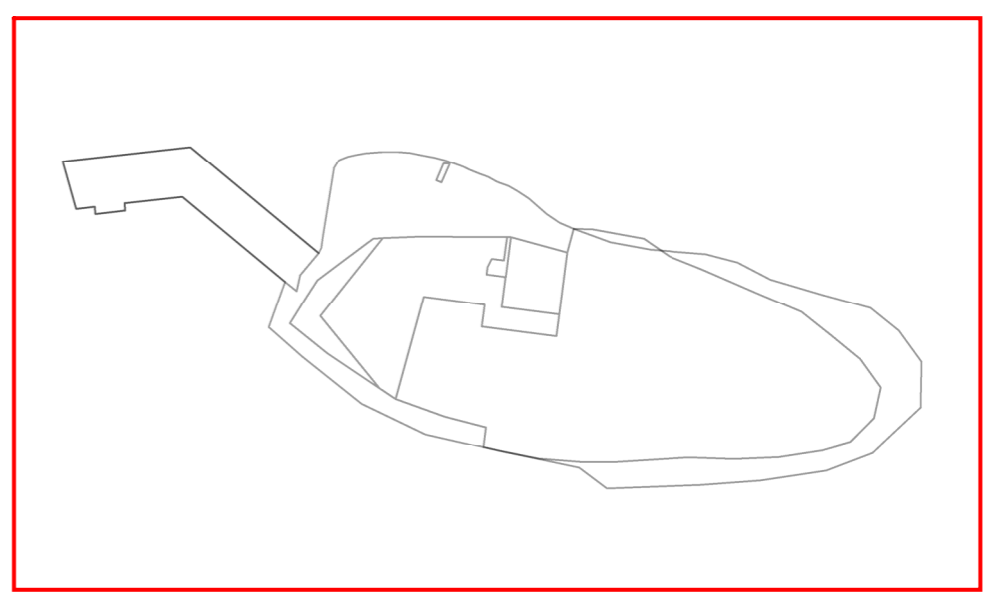
- LEGEND**
- - - Cairns Regional Council Boundary
 - Property Boundary
 - Bushfire Prone Area
 - Very High Potential Bushfire Intensity
 - High Potential Bushfire Intensity
 - Medium Potential Bushfire Intensity
 - ▨ Potential Impact Buffer

Disclaimer:
 While every care is taken to ensure the accuracy of this map, Cairns Regional Council makes no representations or warranties about its accuracy, reliability, completeness or suitability for any particular purpose and disclaims all responsibility and all liability (including without limitation, liability in negligence) for all expenses, losses, damage (including indirect or consequential damage) and costs which might incur as a result of the data being inaccurate or incomplete in any way and for any reason.

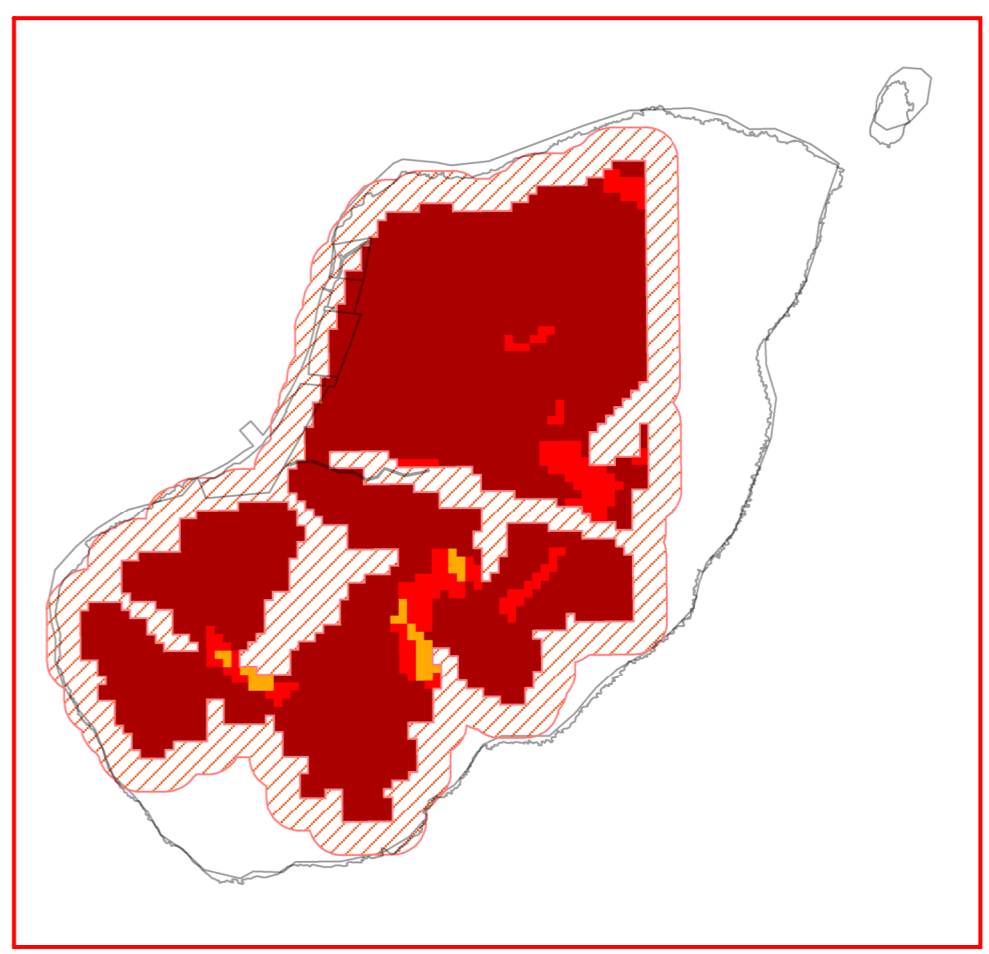
Catastrophe Disclaimer:
 Despite best efforts, the Department of Natural Resources, Mines and Energy (DNRM) makes no representations or warranties in relation to the information and to the extent permitted by law, excludes or limits all warranties relating to correctness, accuracy, reliability, completeness or currency and all liability for any direct, indirect and consequential costs, losses, damages and expenses incurred in anyway (including but not limited to that arising from negligence) in connection with any use of or reliance on the information.
 ©The State of Queensland - Department of Natural Resources, Mines and Energy (DNRM) 2020



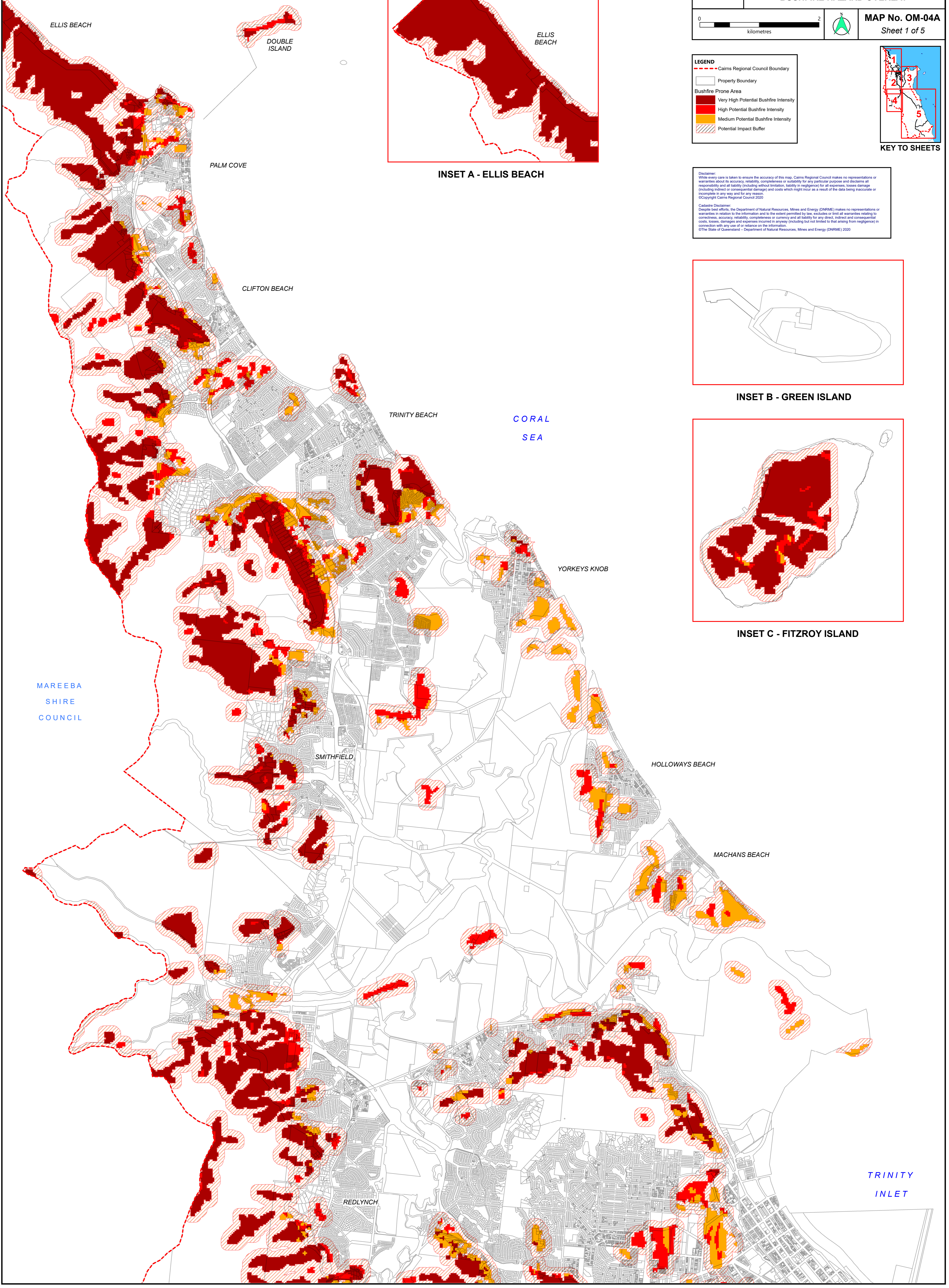
INSET A - ELLIS BEACH



INSET B - GREEN ISLAND

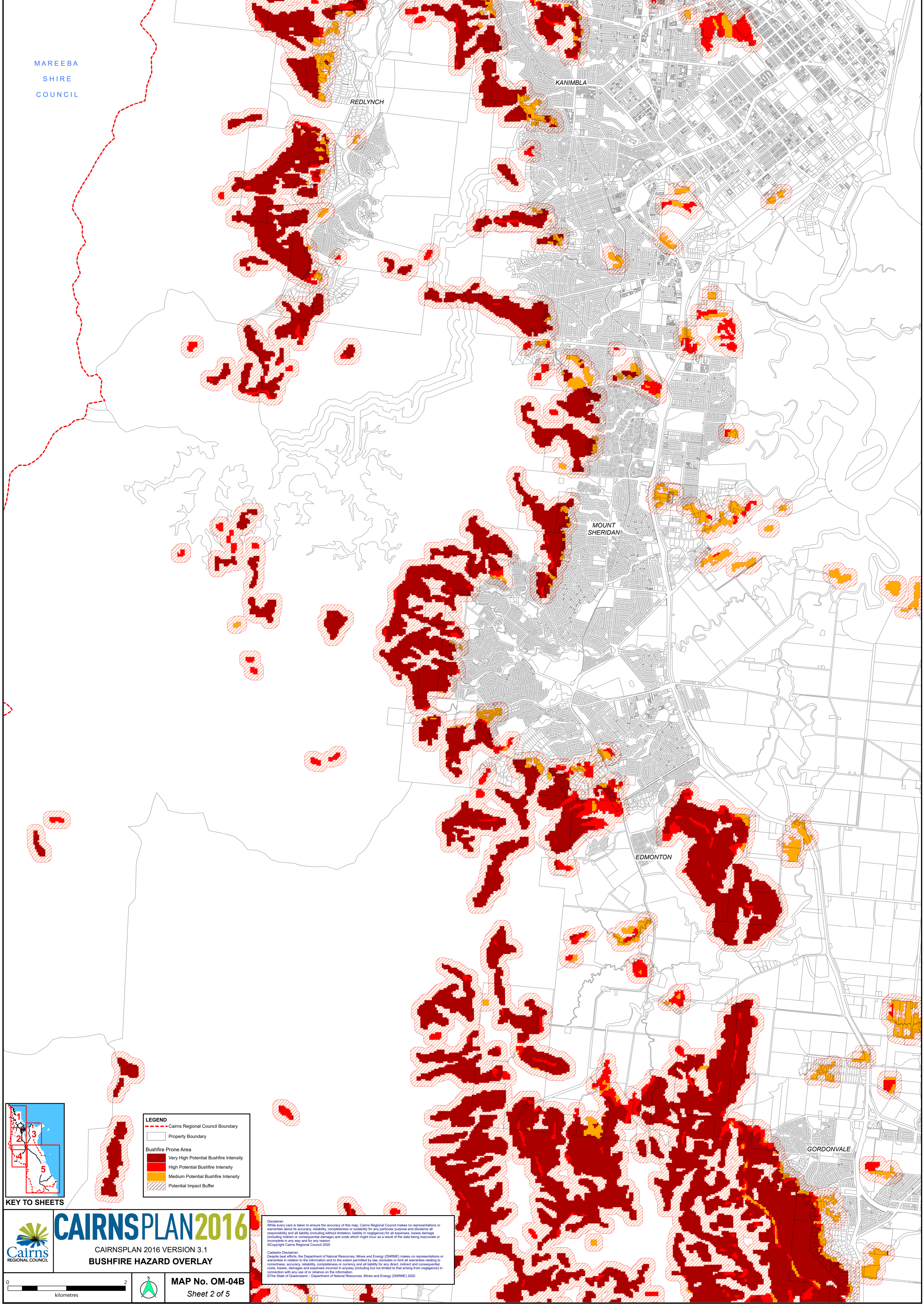


INSET C - FITZROY ISLAND



MAREEBA
SHIRE
COUNCIL

TRINITY
INLET



LEGEND

- Cairns Regional Council Boundary
- - - Property Boundary
- Bushfire Prone Area**
- Very High Potential Bushfire Intensity
- High Potential Bushfire Intensity
- Medium Potential Bushfire Intensity
- Potential Impact Buffer

KEY TO SHEETS

CAIRNSPLAN2016
CAIRNSPLAN 2016 VERSION 3.1
BUSHFIRE HAZARD OVERLAY

0 2
kilometres

MAP No. OM-04B
Sheet 2 of 5

Disclaimer:
While every care is taken to ensure the accuracy of this map, Cairns Regional Council makes no representations or warranties about its accuracy, reliability, completeness or suitability for any particular purpose and disclaims all responsibility and all liability (including without limitation, liability in negligence) for all expenses, losses, damages (including indirect or consequential damages) and costs which might incur as a result of the data being inaccurate or incomplete in any way and for any reason.
©Copyright Cairns Regional Council 2020

Cadastral Disclaimer:
Despite best efforts, the Department of Natural Resources, Mines and Energy (DNRM) makes no representations or warranties in relation to the information and to the extent permitted by law, excludes or limit all warranties relating to correctness, accuracy, reliability, completeness or currency and all liability for any direct, indirect and consequential costs, losses, damages and expenses incurred on any way (including but not limited to that arising from negligence) in connection with any use of or reliance on the information.
©The State of Queensland - Department of Natural Resources, Mines and Energy (DNRM) 2020

TRINITY
INLET

EAST
TRINITY

YARRABAH
SHIRE
COUNCIL

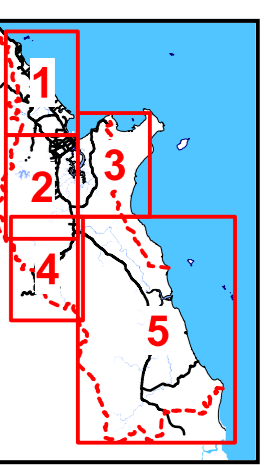
CORAL
SEA

Disclaimer:
While every care is taken to ensure the accuracy of this map, Cairns Regional Council makes no representations or warranties about its accuracy, reliability, completeness or suitability for any particular purpose and disclaims all responsibility and all liability (including without limitation, liability in negligence) for all expenses, losses, damage (including indirect or consequential damage) and costs which might incur as a result of the data being inaccurate or incomplete in any way and for any reason.
©Copyright Cairns Regional Council 2020


Cairns Disclaimer:
Despite best efforts, the Department of Natural Resources, Mines and Energy (DNRM) makes no representations or warranties in relation to the information and to the extent permitted by law, excludes or limit all warranties relating to correctness, accuracy, reliability, completeness or currency and all liability for any direct, indirect and consequential costs, losses, damages and expenses incurred in anyway (including but not limited to that arising from negligence) in connection with any use of or reliance on the information.
©The State of Queensland - Department of Natural Resources, Mines and Energy (DNRM) 2020

LEGEND

- Cairns Regional Council Boundary
- - - Property Boundary
- Bushfire Prone Area
 - Very High Potential Bushfire Intensity
 - High Potential Bushfire Intensity
 - Medium Potential Bushfire Intensity
 - Potential Impact Buffer

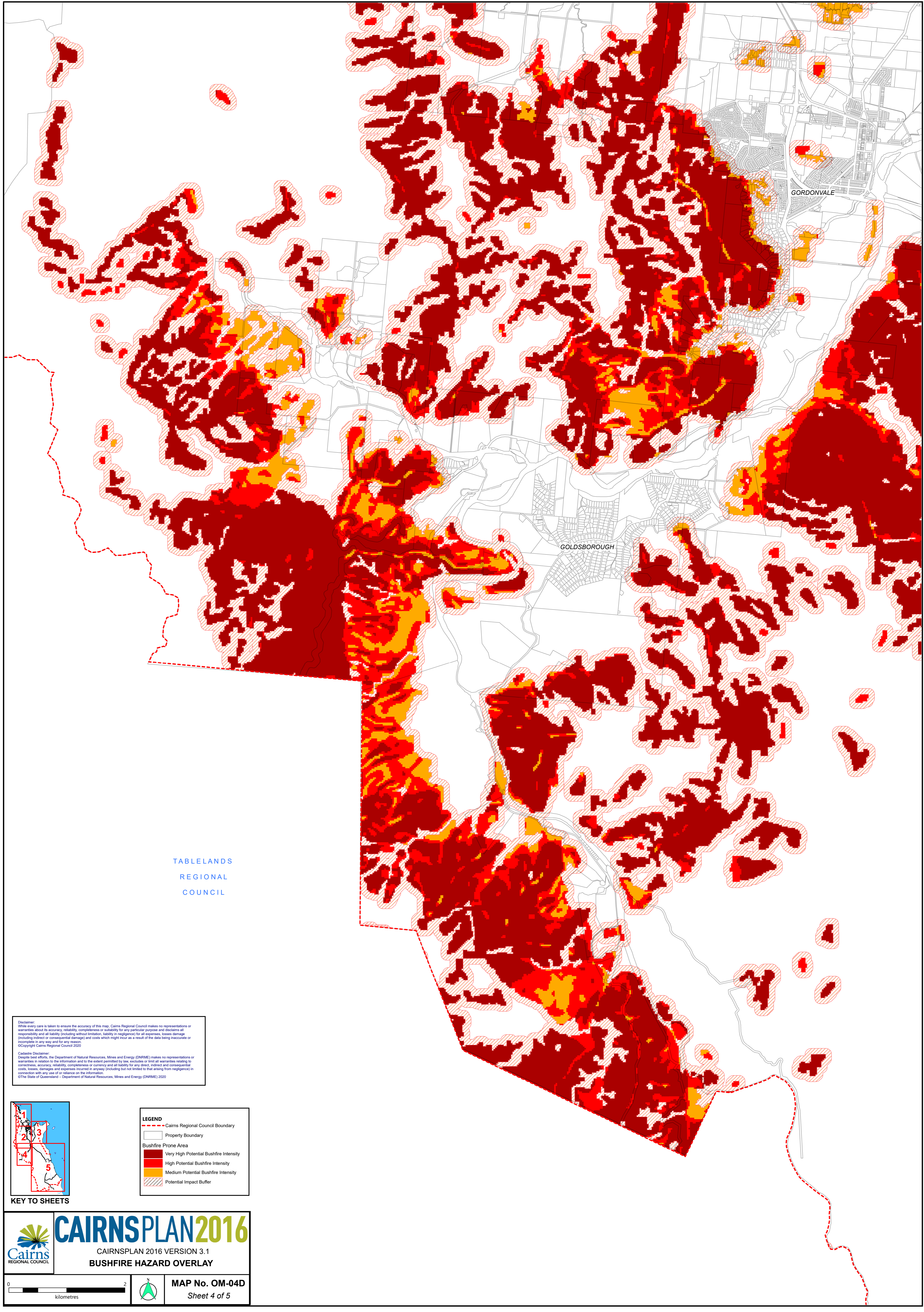


KEY TO SHEETS

 **CAIRNSPLAN2016**
CAIRNSPLAN 2016 VERSION 3.1
BUSHFIRE HAZARD OVERLAY

0 2
kilometres

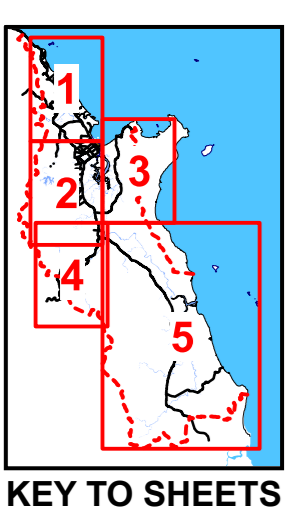
MAP No. OM-04C
Sheet 3 of 5



TABLELANDS
REGIONAL
COUNCIL

Disclaimer:
While every care is taken to ensure the accuracy of this map, Cairns Regional Council makes no representations or warranties about its accuracy, reliability, completeness or suitability for any particular purpose and disclaims all responsibility and all liability (including without limitation, liability in negligence) for all expenses, losses, damage, (including indirect or consequential damage) and costs which might incur as a result of the data being inaccurate or incomplete in any way and for any reason.
©Copyright Cairns Regional Council 2020

Cadastral Disclaimer:
Despite best efforts, the Department of Natural Resources, Mines and Energy (DNRM) makes no representations or warranties in relation to the information and to the extent permitted by law, excludes or limit all warranties relating to correctness, accuracy, reliability, completeness or currency and all liability for any direct, indirect and consequential costs, losses, damages and expenses incurred in anyway (including but not limited to that arising from negligence) in connection with any use of or reliance on the information.
©The State of Queensland – Department of Natural Resources, Mines and Energy (DNRM) 2020

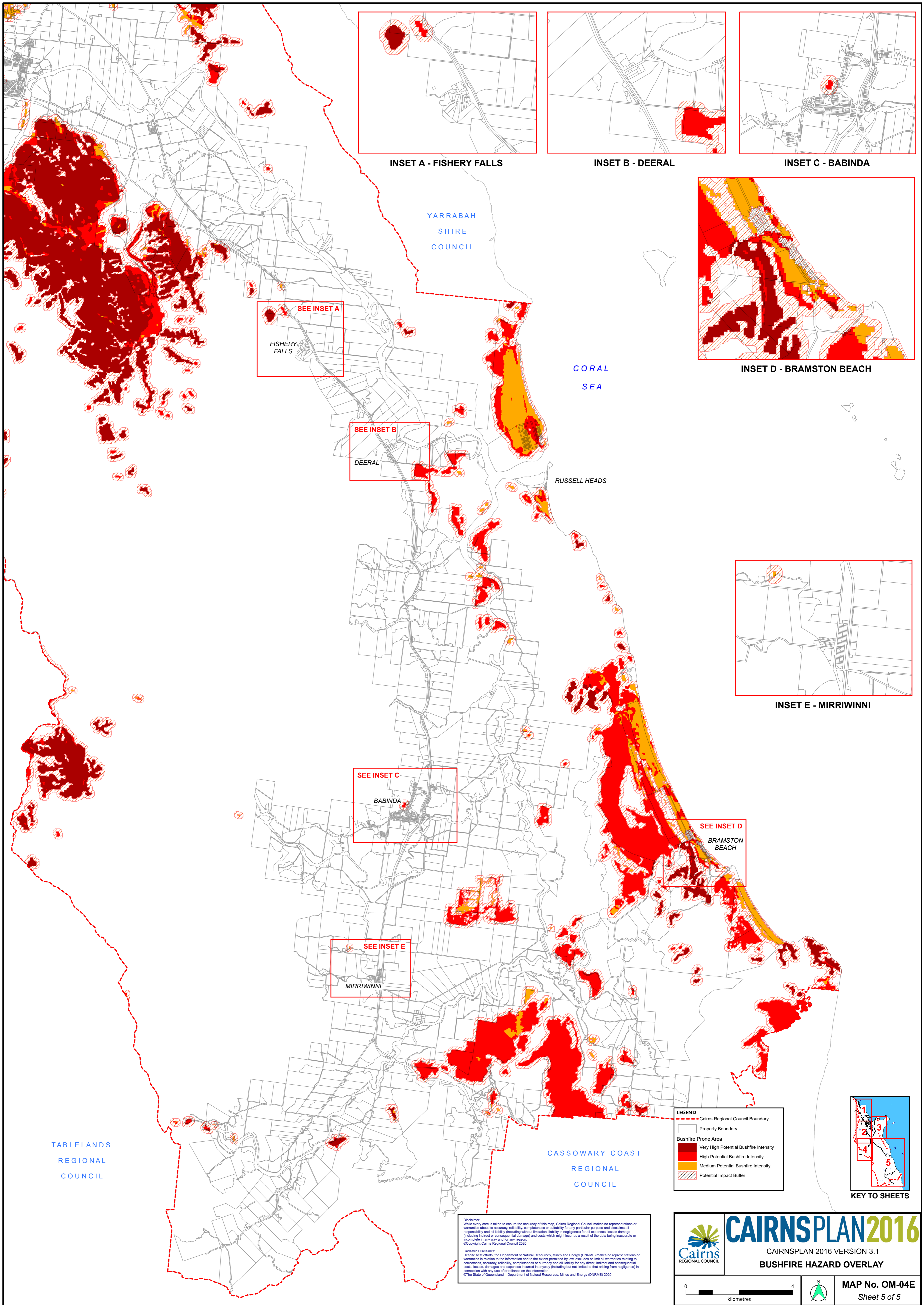


KEY TO SHEETS

LEGEND	
	Cairns Regional Council Boundary
	Property Boundary
Bushfire Prone Area	
	Very High Potential Bushfire Intensity
	High Potential Bushfire Intensity
	Medium Potential Bushfire Intensity
	Potential Impact Buffer

CAIRNSPLAN2016
CAIRNSPLAN 2016 VERSION 3.1
BUSHFIRE HAZARD OVERLAY

MAP No. OM-04D
Sheet 4 of 5



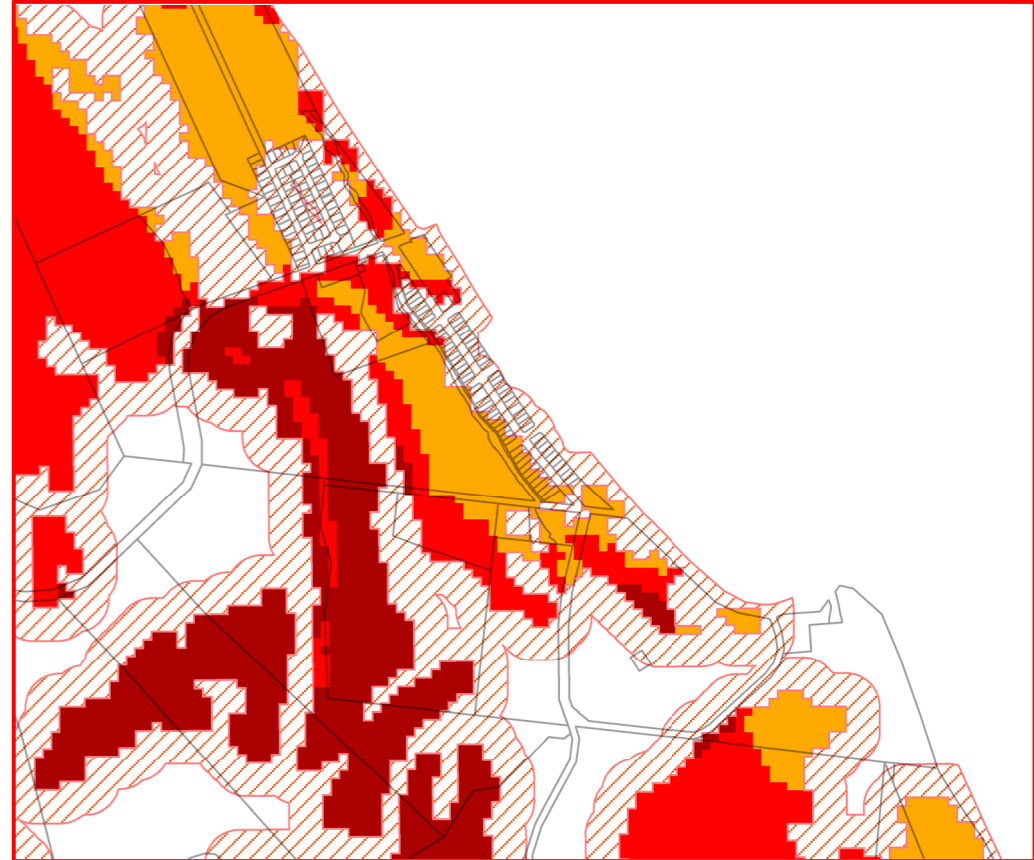
INSET A - FISHERY FALLS



INSET B - DEERAL



INSET C - BABINDA



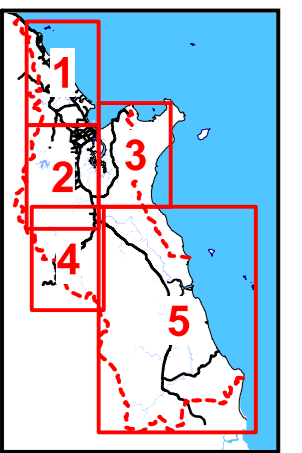
INSET D - BRAMSTON BEACH



INSET E - MIRRIWINNI

LEGEND

- Cairns Regional Council Boundary
- Property Boundary
- Bushfire Prone Area**
 - Very High Potential Bushfire Intensity
 - High Potential Bushfire Intensity
 - Medium Potential Bushfire Intensity
 - Potential Impact Buffer



KEY TO SHEETS

Disclaimer:
While every care is taken to ensure the accuracy of this map, Cairns Regional Council makes no representations or warranties about its accuracy, reliability, completeness or suitability for any particular purpose and disclaims all responsibility and all liability (including without limitation, liability in negligence) for all expenses, losses, damage (including indirect or consequential damage) and costs which might incur as a result of the data being inaccurate or incomplete in any way and for any reason.
©Copyright Cairns Regional Council 2020

Cadastral Disclaimer:
Despite best efforts, the Department of Natural Resources, Mines and Energy (DNRM) makes no representations or warranties in relation to the information and to the extent permitted by law, excludes or limits all warranties relating to correctness, accuracy, reliability, completeness or currency and all liability for any direct, indirect and consequential costs, losses, damages and expenses incurred in anyway (including but not limited to that arising from negligence) in connection with any use of or reliance on the information.
©The State of Queensland - Department of Natural Resources, Mines and Energy (DNRM) 2020

CAIRNSPLAN2016

CAIRNSPLAN 2016 VERSION 3.1

BUSHFIRE HAZARD OVERLAY

0 4
kilometres

MAP No. OM-04E

Sheet 5 of 5

TABLELANDS
REGIONAL
COUNCIL

CASSOWARY COAST
REGIONAL
COUNCIL

YARRABAH
SHIRE
COUNCIL

CORAL
SEA

RUSSELL HEADS

SEE INSET A
FISHERY
FALLS

SEE INSET B
DEERAL

SEE INSET C
BABINDA

SEE INSET E
MIRRIWINNI

SEE INSET D
BRAMSTON
BEACH