

Map 1

AEROGLEN: Part of the southern end of Touch Park between the southern boundary of the sporting fields and the southern side of the park between Aeroglen Drive and the mangrove lined creek to the west.



Map 2

BABINDA: Northern part of Carl Mellick Park located at the western end of Harwood Drive.



Map 3

BAYVIEW HEIGHTS: Part of Arthur Forno Park, being at the western end near the Vista Street entrance to the park and behind houses in Vista Street, Fiesta Close and Flamenco Close.



Map 4

BAYVIEW HEIGHTS: Ben Wilson Park and part of adjacent drainage reserve. Corner of Anderson Road and Fairview Streets.



Map 5

BENTLEY PARK: Part of Robert Road Drainage Reserve, Robert Road, Bentley Park on the southern side of Robert Road adjacent to the creek.



Map 6

BRAMSTON BEACH: The area of beach commencing 100 metres south of the stinger net and extending to the southern end of the beach.



Map 7

BRAMSTON BEACH: The area of beach commencing at the northern end of the caravan park and extending northward.



Map 8

BRINSMEAD: The area to the north of the central internal access in Goomboora park.



Map 9

BUCHANS POINT: From the rocks at the southern end of the beach to the first car park to the north.



Map 10

BUNGALOW: Part of Little Barlow Park



Map 11

CARAVONICA: The northern part of Barron Waters/Burrawungal Park, Lake Placid Road, Caravonica and the whole of Impey Reserve, on the eastern side of Impey Street located behind the houses fronting Impey Street.



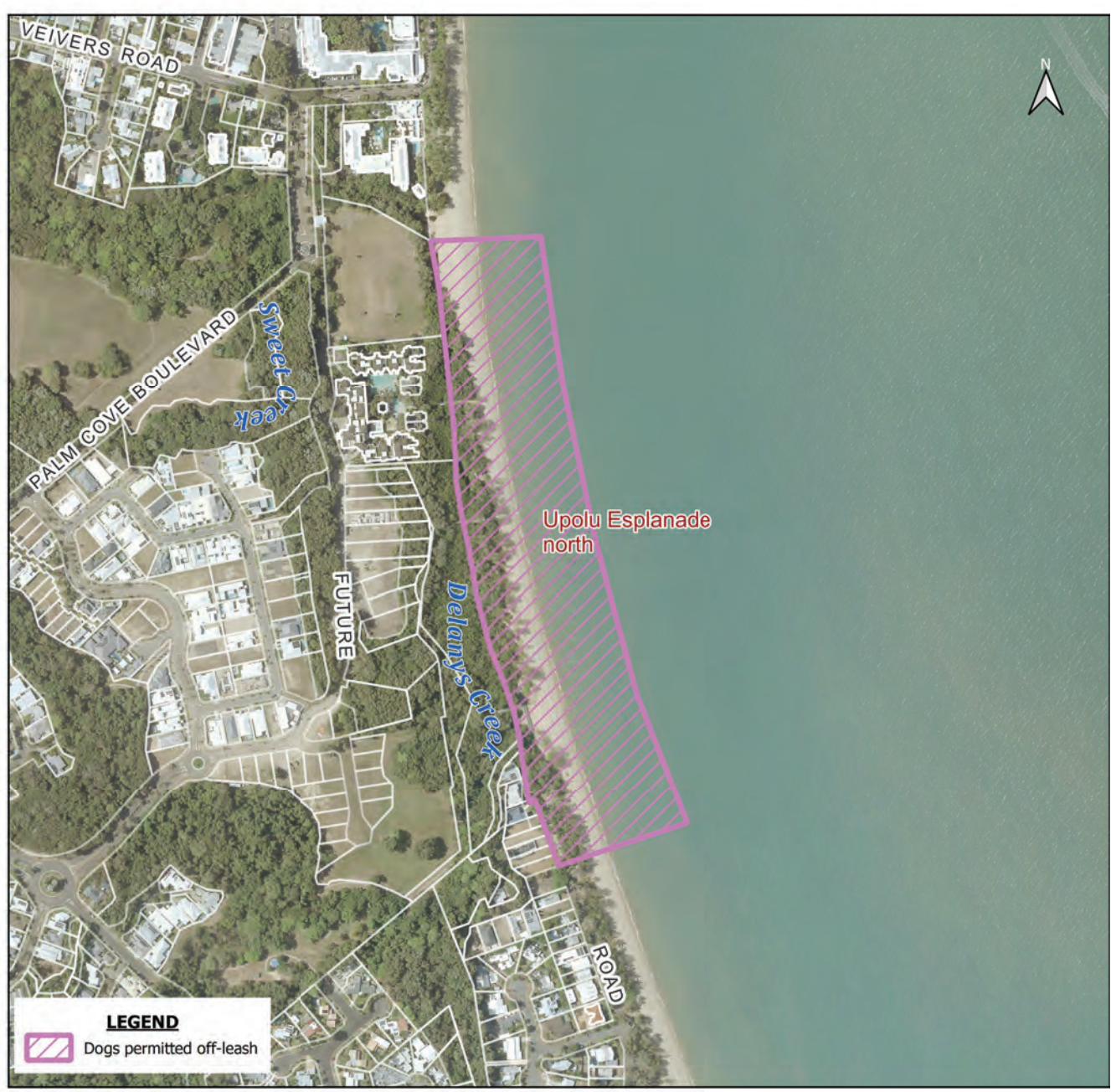
Map 12

CLIFTON BEACH: Part of parkland in Eddy Street, Clifton Beach between Eddy Street and the rear of houses in Escape Close for a distance of 50 metres from houses in Eddy Street and east towards Saxon Street.



Map 13

CLIFTON BEACH: The area of beach from the northern end of Upolu Esplanade north towards Palm Cove and finishing 150 metres south of Veivers Road, Palm Cove.



Map 14

CLIFTON BEACH: The southern end of Clifton Beach between the southern end of Arlington Esplanade and to the north of Kewarra Street, Kewarra Beach.



Map 15

CLIFTON BEACH: Whole of Evergreen Park on the southern side of Evergreen Road and Western Side of Captain Cook Highway.



Map 16

EARLVILLE: Part of Henley's Hill Park covering the fenced dog exercise area to the west of De Jarlais St and to the south of the car park entry point off De Jarlais Street.



Map 17

EDMONTON: McKinnon Creek Detention Basin at Isabella Estate.



Map 18

EDMONTON: Part of Carne Park, Trojan Street, Edmonton being on the eastern side of the Trojan Street entrance to the edge of the creek bed.



Map 19

EDMONTON: Part of Fuller Park covering the south-western side of the park.



Map 20

ELLIS BEACH: From rocks at the southern end of the beach for a distance of 450 metres to the north (adjacent to the car park).



Map 21

GORDONVALE: Part of Howard Bailey Park at the end of Klarwein Close being on the Western side of the Klarwein Street entrance and behind houses in Highleigh Road and bounded by the drain at the rear.



Map 22

HOLLOWAYS BEACH: Beach at the northern end of Holloways Beach fronting Casuarina Street and north of Luke Street.



Map 23

HOLLOWAYS BEACH: The southern end of Holloways Beach between Tamarind Street and Magnolia Street.



Map 25

KEWARRA BEACH: The area of beach commencing 100 metres south of the stinger net and continuing to the rocks at Taylor Point.



Map 26

KEWARRA BEACH: Part of Nova Street Park and Sunbird Park, Kewarra Beach on the southern side of Nova Street and the northern side of Nova Street Drain, between the two pedestrian pathways that bisect the park.



Map 27

MACHANS BEACH: Southern end of Machans Beach south of Cinderella Street to the Barron River.



Map 28

MANUNDA: Part of Harald Falge Park being the area between McCormack Street and drain.



Map 29

MANUNDA: Parkland situated in Card Avenue, Manunda between houses in Card Avenue and behind houses in Barlow Street



Map 30

MOOROOBOOL: (Irene Street Flood Plain B) – North of Langan Street, east of Irene Street, west of Carnation Drive and south of Marigold Close.



Map 31

MT SHERIDAN: Trafalgar Detention Basin and Balmoral Close Park from the south of Trafalgar Road to the creek to the south and from Idalia Road to the property boundary to the west.



Map 32

MT SHERIDAN: The detention basin in George Cannon Drive Park south and east of Forest Gardens Boulevard, north of George Cannon Drive and west of Des Chalmers Drive.



Map 33

NORTH CAIRNS: Parkland at the northern end of the Esplanade between Smith and Lily Streets and bounded by the mangroves to the east and the Esplanade to the west.



Map 34

PALM COVE: Part of Silver Crescent Park, Palm Cove located to the east of the pedestrian pathway and to the northeast of Osterlind Crescent.



Map 35

REDLYNCH: Part of Gamberra Drive Park, located on the northern side of Huntley Crescent and the western side of Gamberra Drive, Redlynch east of the BMX jumps and the creek.



Map 36

REDLYNCH: Portion of parkland off Harvey Road, Redlynch being at the railway line end of the parkland and behind houses in Ficus Close.



Map 37

SMITHFIELD: Part of Rainy Mountain Park in Cumberland Avenue covering the northern end of the park behind houses in Survey Street and the fenced dog exercise area.



Map 38

TRINITY BEACH: The beach from the northern end of Vasey Esplanade north to the rocks.



Map 39

TRINITY BEACH: The beach at the southern end of Trinity Beach to the south of Peacock Street.



Map 40

TRINITY PARK: Half Moon Bay beach, Trinity Park to the south of the car park entrance.



Map 41

WHITE ROCK: Part of Mercurio Street Park, White Rock, located on the western side of Mercurio Street and directly south of the stormwater drain.



Map 42

WHITFIELD: Engineers Park on the corner of Bott and McManus Streets, Whitfield behind houses in Bott Street, Prescott Street and Neeve Close.



Map 43

WHITFIELD: Colin Penridge Park located to the north of Murchison Street and west of McManus Street and Hillview Crescent.



Map 44

WOREE: Port of Hussey Park off Loretta Close, Woree being the eastern end of the park adjacent to Loretta Street and behind houses in Karen Close and Carmel Close.



Map 45

YORKEYS KNOB: The southern end of Yorkeys Knob beach south of the corner of Sims Esplanade and Kempton Street.



Map 46

SMITHFIELD: Fenced area to the east of Bamford Close and north of Old McGregor Road.



Map 47

BABINDA: Southern Part of Bill Wakeham Park south of the internal access road south of the sporting fields.



Map 48

GORDONVALE: Fenced area on the eastern side of Kenrick Park

