



Cairns Infrastructure & Assets | 2024-2025

# SWIM Annual Data

Department of Local Government, Water and Volunteers  
Key Performance Indicators (KPIs) as required under the *Water Supply (Safety and Reliability) Act 2008*



organisation	scheme id	scheme	scheme long name	scheme type	KPI code	SWIM code	indicator title	value	units
Cairns Regional Council	9303	Babinda	Babinda Potable Water Scheme	Potable water scheme	QG1.4a	AS1	Number water treatment plants: providing full treatment	0	Count
Cairns Regional Council	9303	Babinda	Babinda Potable Water Scheme	Potable water scheme	QG4.18	AS14.1	Number of water main breaks, bursts and leaks	4	Count
Cairns Regional Council	9303	Babinda	Babinda Potable Water Scheme	Potable water scheme	QG1.1	AS2	Length water mains: all	46.7	km
Cairns Regional Council	9303	Babinda	Babinda Potable Water Scheme	Potable water scheme	QG1.4b	AS47	Capacity of water treatment plants	NR	ML/day
Cairns Regional Council	9303	Babinda	Babinda Potable Water Scheme	Potable water scheme	QG1.7	AS48	Total drinking water storage volume	4.49	ML
Cairns Regional Council	9303	Babinda	Babinda Potable Water Scheme	Potable water scheme	QG1.23	AS56	Volume water lost: drinking water	19.5	ML
Cairns Regional Council	9303	Babinda	Babinda Potable Water Scheme	Potable water scheme	QG4.5	AS8.1	Water main breaks per 100 km main	8.6	per 100 km water main
Cairns Regional Council	9303	Babinda	Babinda Potable Water Scheme	Potable water scheme	QG1.24	CS1.1	Population receiving water services	1678	People
Cairns Regional Council	9303	Babinda	Babinda Potable Water Scheme	Potable water scheme	QG4.12	CS10	Water service complaints per 1000 connections	0	per 1000 connections
Cairns Regional Council	9303	Babinda	Babinda Potable Water Scheme	Potable water scheme	QG4.14	CS12	Water and sewerage account complaints per 1000 connections	0	per 1000 connections
Cairns Regional Council	9303	Babinda	Babinda Potable Water Scheme	Potable water scheme	QG4.11	CS13	Water and sewerage complaints (all) per 1000 connections	1.3	per 1000 connections
Cairns Regional Council	9303	Babinda	Babinda Potable Water Scheme	Potable water scheme	QG4.7	CS17	Average number unplanned interruptions: drinking water	164.2	per 1000 connections
Cairns Regional Council	9303	Babinda	Babinda Potable Water Scheme	Potable water scheme	QG1.13	CS2.1	Connected residential properties: water	680	Connections
Cairns Regional Council	9303	Babinda	Babinda Potable Water Scheme	Potable water scheme	QG4.24	CS20.1	Number drinking water complaints: water quality	1	Count
Cairns Regional Council	9303	Babinda	Babinda Potable Water Scheme	Potable water scheme	QG4.21	CS22.1	Number drinking water complaints: service	0	Count
Cairns Regional Council	9303	Babinda	Babinda Potable Water Scheme	Potable water scheme	QG4.23	CS23.1	Number drinking water and sewerage complaints: accounts	0	Count
Cairns Regional Council	9303	Babinda	Babinda Potable Water Scheme	Potable water scheme	QG1.14	CS3.1	Connected non-residential properties: water	63	Connections
Cairns Regional Council	9303	Babinda	Babinda Potable Water Scheme	Potable water scheme	QG4.20	CS61	Number connections affected by unplanned interruptions	122	Count
Cairns Regional Council	9303	Babinda	Babinda Potable Water Scheme	Potable water scheme	QG4.8a	CS66	% CSS response target met: water incidents	74	%
Cairns Regional Council	9303	Babinda	Babinda Potable Water Scheme	Potable water scheme	QG4.10	CS9	Water quality complaints per 1000 connections	1.3	per 1000 connections
Cairns Regional Council	9303	Babinda	Babinda Potable Water Scheme	Potable water scheme	QG1.8	WA1	Volume water self-sourced: surface water	209.6	ML
Cairns Regional Council	9303	Babinda	Babinda Potable Water Scheme	Potable water scheme	QG1.35	WA124	Volume drinking+non-drinking water used by your organisation	44	ML
Cairns Regional Council	9303	Babinda	Babinda Potable Water Scheme	Potable water scheme	QG1.37	WA197	Volume drinking+non-drinking water returned to surface water	NR	ML
Cairns Regional Council	9303	Babinda	Babinda Potable Water Scheme	Potable water scheme	QG1.9a	WA2	Volume water self-sourced: groundwater	NR	ML
Cairns Regional Council	9303	Babinda	Babinda Potable Water Scheme	Potable water scheme	QG1.5	WA201	Maximum daily demand	0.7	ML/day

organisation	scheme id	scheme	scheme long name	scheme type	KPI code	SWIM code	indicator title	value	units
Cairns Regional Council	9303	Babinda	Babinda Potable Water Scheme	Potable water scheme	QG1.21	WA223	Volume all water imported: internal and external	12	ML
Cairns Regional Council	9303	Babinda	Babinda Potable Water Scheme	Potable water scheme	QG1.22	WA224	Volume all water exported: internal and external	NR	ML
Cairns Regional Council	9303	Babinda	Babinda Potable Water Scheme	Potable water scheme	QG1.6a	WA225	Volume drinking water produced at a water treatment plant	NR	ML
Cairns Regional Council	9303	Babinda	Babinda Potable Water Scheme	Potable water scheme	QG1.29	WA233	Total volume drinking+non-drinking water exported: external	NR	ML
Cairns Regional Council	9303	Babinda	Babinda Potable Water Scheme	Potable water scheme	QG1.31	WA238	Volume drinking+non-drinking water imported: external (all Suppliers)	NR	ML
Cairns Regional Council	9303	Babinda	Babinda Potable Water Scheme	Potable water scheme	QG1.17a	WA32	Volume drinking water supplied: residential	108.2	ML
Cairns Regional Council	9303	Babinda	Babinda Potable Water Scheme	Potable water scheme	QG1.18a	WA34	Volume drinking water supplied: non-residential	79.9	ML
Cairns Regional Council	9303	Babinda	Babinda Potable Water Scheme	Potable water scheme	QG1.10	WA61	Volume water self-sourced: desalination marine water	NR	ML
Cairns Regional Council	9303	Babinda	Babinda Potable Water Scheme	Potable water scheme	QG1.12	WA7	Volume water sourced: all	209.6	ML
Cairns Regional Council	9303	Babinda	Babinda Potable Water Scheme	Potable water scheme	QG2.10a	WS11	Water restriction duration: PWCM	365	days
Cairns Regional Council	9303	Babinda	Babinda Potable Water Scheme	Potable water scheme	QG2.10b	WS12	Water restriction duration: Level 1	0	days
Cairns Regional Council	9303	Babinda	Babinda Potable Water Scheme	Potable water scheme	QG2.10c	WS13	Water restriction duration: Level 2	0	days
Cairns Regional Council	9303	Babinda	Babinda Potable Water Scheme	Potable water scheme	QG2.10d	WS14	Water restriction duration: Level 3	0	days
Cairns Regional Council	9303	Babinda	Babinda Potable Water Scheme	Potable water scheme	QG2.10e	WS15	Water restriction duration: Level 4	0	days
Cairns Regional Council	9303	Babinda	Babinda Potable Water Scheme	Potable water scheme	QG2.10f	WS16	Water restriction duration: Level 5 (or greater)	0	days
Cairns Regional Council	9303	Babinda	Babinda Potable Water Scheme	Potable water scheme	QG2.11a	WS17	Has asset management planning been undertaken in the last 10 yrs?	yes	yes/no
Cairns Regional Council	9303	Babinda	Babinda Potable Water Scheme	Potable water scheme	QG2.11b	WS18	Has drought management planning been undertaken in the last 10 yrs?	yes	yes/no
Cairns Regional Council	9303	Babinda	Babinda Potable Water Scheme	Potable water scheme	QG2.11c	WS19	Has water demand forecasts been developed or reviewed in the last 5 yrs?	yes	yes/no
Cairns Regional Council	9303	Babinda	Babinda Potable Water Scheme	Potable water scheme	QG2.11d	WS20	Has assessment of key capacity constraints of water infrastructure been undertaken in last 10 yrs?	yes	yes/no
Cairns Regional Council	9303	Babinda	Babinda Potable Water Scheme	Potable water scheme	QG2.11e	WS21	Has the timing for potential future supply augmentation been assessed in the last 10 yrs?	yes	yes/no
Cairns Regional Council	9303	Babinda	Babinda Potable Water Scheme	Potable water scheme	QG2.12	WS22	Months water supply remaining as at 30 June (KPI level): with contingency	6	1,2,3,4,5,6
Cairns Regional Council	9303	Babinda	Babinda Potable Water Scheme	Potable water scheme	QG2.13	WS23	Confidence water demand will be met: next 18 mths	high	high,fair,unsure,low,very low
Cairns Regional Council	9303	Babinda	Babinda Potable Water Scheme	Potable water scheme	QG2.14	WS24	Confidence water demand will be met: next 5 yrs	high	high,fair,unsure,low,very low
Cairns Regional Council	9303	Babinda	Babinda Potable Water Scheme	Potable water scheme	QG2.12a	WS28	Months water supply remaining as at 30 June (KPI level): without contingency	6	1,2,3,4,5,6
Cairns Regional Council	9303	Babinda	Babinda Potable Water Scheme	Potable water scheme	QG2.3	WS3	Available contingency supplies	yes	yes/no

organisation	scheme id	scheme	scheme long name	scheme type	KPI code	SWIM code	indicator title	value	units
Cairns Regional Council	9299	Bartle Frere	Bartle Frere Potable Water Scheme	Potable water scheme	QG1.4a	AS1	Number water treatment plants: providing full treatment	0	Count
Cairns Regional Council	9299	Bartle Frere	Bartle Frere Potable Water Scheme	Potable water scheme	QG4.18	AS14.1	Number of water main breaks, bursts and leaks	38	Count
Cairns Regional Council	9299	Bartle Frere	Bartle Frere Potable Water Scheme	Potable water scheme	QG1.1	AS2	Length water mains: all	32.3	km
Cairns Regional Council	9299	Bartle Frere	Bartle Frere Potable Water Scheme	Potable water scheme	QG1.4b	AS47	Capacity of water treatment plants	NR	ML/day
Cairns Regional Council	9299	Bartle Frere	Bartle Frere Potable Water Scheme	Potable water scheme	QG1.7	AS48	Total drinking water storage volume	0.91	ML
Cairns Regional Council	9299	Bartle Frere	Bartle Frere Potable Water Scheme	Potable water scheme	QG1.23	AS56	Volume water lost: drinking water	96.1	ML
Cairns Regional Council	9299	Bartle Frere	Bartle Frere Potable Water Scheme	Potable water scheme	QG4.5	AS8.1	Water main breaks per 100 km main	117.7	per 100 km water main
Cairns Regional Council	9299	Bartle Frere	Bartle Frere Potable Water Scheme	Potable water scheme	QG1.24	CS1.1	Population receiving water services	387	People
Cairns Regional Council	9299	Bartle Frere	Bartle Frere Potable Water Scheme	Potable water scheme	QG4.12	CS10	Water service complaints per 1000 connections	0	per 1000 connections
Cairns Regional Council	9299	Bartle Frere	Bartle Frere Potable Water Scheme	Potable water scheme	QG4.14	CS12	Water and sewerage account complaints per 1000 connections	0	per 1000 connections
Cairns Regional Council	9299	Bartle Frere	Bartle Frere Potable Water Scheme	Potable water scheme	QG4.11	CS13	Water and sewerage complaints (all) per 1000 connections	0	per 1000 connections
Cairns Regional Council	9299	Bartle Frere	Bartle Frere Potable Water Scheme	Potable water scheme	QG4.7	CS17	Average number unplanned interruptions: drinking water	1949.4	per 1000 connections
Cairns Regional Council	9299	Bartle Frere	Bartle Frere Potable Water Scheme	Potable water scheme	QG1.13	CS2.1	Connected residential properties: water	157	Connections
Cairns Regional Council	9299	Bartle Frere	Bartle Frere Potable Water Scheme	Potable water scheme	QG4.24	CS20.1	Number drinking water complaints: water quality	0	Count
Cairns Regional Council	9299	Bartle Frere	Bartle Frere Potable Water Scheme	Potable water scheme	QG4.21	CS22.1	Number drinking water complaints: service	0	Count
Cairns Regional Council	9299	Bartle Frere	Bartle Frere Potable Water Scheme	Potable water scheme	QG4.23	CS23.1	Number drinking water and sewerage complaints: accounts	0	Count
Cairns Regional Council	9299	Bartle Frere	Bartle Frere Potable Water Scheme	Potable water scheme	QG1.14	CS3.1	Connected non-residential properties: water	1	Connections
Cairns Regional Council	9299	Bartle Frere	Bartle Frere Potable Water Scheme	Potable water scheme	QG4.20	CS61	Number connections affected by unplanned interruptions	308	Count
Cairns Regional Council	9299	Bartle Frere	Bartle Frere Potable Water Scheme	Potable water scheme	QG4.8a	CS66	% CSS response target met: water incidents	82	%
Cairns Regional Council	9299	Bartle Frere	Bartle Frere Potable Water Scheme	Potable water scheme	QG4.10	CS9	Water quality complaints per 1000 connections	0	per 1000 connections
Cairns Regional Council	9299	Bartle Frere	Bartle Frere Potable Water Scheme	Potable water scheme	QG1.8	WA1	Volume water self-sourced: surface water	160.5	ML
Cairns Regional Council	9299	Bartle Frere	Bartle Frere Potable Water Scheme	Potable water scheme	QG1.35	WA124	Volume drinking+non-drinking water used by your organisation	4.5	ML
Cairns Regional Council	9299	Bartle Frere	Bartle Frere Potable Water Scheme	Potable water scheme	QG1.37	WA197	Volume drinking+non-drinking water returned to surface water	NR	ML
Cairns Regional Council	9299	Bartle Frere	Bartle Frere Potable Water Scheme	Potable water scheme	QG1.9a	WA2	Volume water self-sourced: groundwater	NR	ML
Cairns Regional Council	9299	Bartle Frere	Bartle Frere Potable Water Scheme	Potable water scheme	QG1.5	WA201	Maximum daily demand	0.6	ML/day

organisation	scheme id	scheme	scheme long name	scheme type	KPI code	SWIM code	indicator title	value	units
Cairns Regional Council	9299	Bartle Frere	Bartle Frere Potable Water Scheme	Potable water scheme	QG1.21	WA223	Volume all water imported: internal and external	NR	ML
Cairns Regional Council	9299	Bartle Frere	Bartle Frere Potable Water Scheme	Potable water scheme	QG1.22	WA224	Volume all water exported: internal and external	NR	ML
Cairns Regional Council	9299	Bartle Frere	Bartle Frere Potable Water Scheme	Potable water scheme	QG1.6a	WA225	Volume drinking water produced at a water treatment plant	NR	ML
Cairns Regional Council	9299	Bartle Frere	Bartle Frere Potable Water Scheme	Potable water scheme	QG1.29	WA233	Total volume drinking+non-drinking water exported: external	NR	ML
Cairns Regional Council	9299	Bartle Frere	Bartle Frere Potable Water Scheme	Potable water scheme	QG1.31	WA238	Volume drinking+non-drinking water imported: external (all Suppliers)	NR	ML
Cairns Regional Council	9299	Bartle Frere	Bartle Frere Potable Water Scheme	Potable water scheme	QG1.17a	WA32	Volume drinking water supplied: residential	22.3	ML
Cairns Regional Council	9299	Bartle Frere	Bartle Frere Potable Water Scheme	Potable water scheme	QG1.18a	WA34	Volume drinking water supplied: non-residential	33.8	ML
Cairns Regional Council	9299	Bartle Frere	Bartle Frere Potable Water Scheme	Potable water scheme	QG1.10	WA61	Volume water self-sourced: desalination marine water	NR	ML
Cairns Regional Council	9299	Bartle Frere	Bartle Frere Potable Water Scheme	Potable water scheme	QG1.12	WA7	Volume water sourced: all	160.5	ML
Cairns Regional Council	9299	Bartle Frere	Bartle Frere Potable Water Scheme	Potable water scheme	QG2.10a	WS11	Water restriction duration: PWCM	365	days
Cairns Regional Council	9299	Bartle Frere	Bartle Frere Potable Water Scheme	Potable water scheme	QG2.10b	WS12	Water restriction duration: Level 1	0	days
Cairns Regional Council	9299	Bartle Frere	Bartle Frere Potable Water Scheme	Potable water scheme	QG2.10c	WS13	Water restriction duration: Level 2	0	days
Cairns Regional Council	9299	Bartle Frere	Bartle Frere Potable Water Scheme	Potable water scheme	QG2.10d	WS14	Water restriction duration: Level 3	0	days
Cairns Regional Council	9299	Bartle Frere	Bartle Frere Potable Water Scheme	Potable water scheme	QG2.10e	WS15	Water restriction duration: Level 4	0	days
Cairns Regional Council	9299	Bartle Frere	Bartle Frere Potable Water Scheme	Potable water scheme	QG2.10f	WS16	Water restriction duration: Level 5 (or greater)	0	days
Cairns Regional Council	9299	Bartle Frere	Bartle Frere Potable Water Scheme	Potable water scheme	QG2.11a	WS17	Has asset management planning been undertaken in the last 10 yrs?	yes	yes/no
Cairns Regional Council	9299	Bartle Frere	Bartle Frere Potable Water Scheme	Potable water scheme	QG2.11b	WS18	Has drought management planning been undertaken in the last 10 yrs?	yes	yes/no
Cairns Regional Council	9299	Bartle Frere	Bartle Frere Potable Water Scheme	Potable water scheme	QG2.11c	WS19	Has water demand forecasts been developed or reviewed in the last 5 yrs?	yes	yes/no
Cairns Regional Council	9299	Bartle Frere	Bartle Frere Potable Water Scheme	Potable water scheme	QG2.11d	WS20	Has assessment of key capacity constraints of water infrastructure been undertaken in last 10 yrs?	yes	yes/no
Cairns Regional Council	9299	Bartle Frere	Bartle Frere Potable Water Scheme	Potable water scheme	QG2.11e	WS21	Has the timing for potential future supply augmentation been assessed in the last 10 yrs?	yes	yes/no
Cairns Regional Council	9299	Bartle Frere	Bartle Frere Potable Water Scheme	Potable water scheme	QG2.12	WS22	Months water supply remaining as at 30 June (KPI level): with contingency	6	1,2,3,4,5,6
Cairns Regional Council	9299	Bartle Frere	Bartle Frere Potable Water Scheme	Potable water scheme	QG2.13	WS23	Confidence water demand will be met: next 18 mths	fair	high,fair,unsure,low,very low
Cairns Regional Council	9299	Bartle Frere	Bartle Frere Potable Water Scheme	Potable water scheme	QG2.14	WS24	Confidence water demand will be met: next 5 yrs	fair	high,fair,unsure,low,very low
Cairns Regional Council	9299	Bartle Frere	Bartle Frere Potable Water Scheme	Potable water scheme	QG2.12a	WS28	Months water supply remaining as at 30 June (KPI level): without contingency	4	1,2,3,4,5,6
Cairns Regional Council	9299	Bartle Frere	Bartle Frere Potable Water Scheme	Potable water scheme	QG2.3	WS3	Available contingency supplies	yes	yes/no

organisation	scheme id	scheme	scheme long name	scheme type	KPI code	SWIM code	indicator title	value	units
Cairns Regional Council	9300	Bellenden Ker	Bellenden Ker Potable Water Scheme	Potable water scheme	QG1.4a	AS1	Number water treatment plants: providing full treatment	0	Count
Cairns Regional Council	9300	Bellenden Ker	Bellenden Ker Potable Water Scheme	Potable water scheme	QG4.18	AS14.1	Number of water main breaks, bursts and leaks	8	Count
Cairns Regional Council	9300	Bellenden Ker	Bellenden Ker Potable Water Scheme	Potable water scheme	QG1.1	AS2	Length water mains: all	17.7	km
Cairns Regional Council	9300	Bellenden Ker	Bellenden Ker Potable Water Scheme	Potable water scheme	QG1.4b	AS47	Capacity of water treatment plants	NR	ML/day
Cairns Regional Council	9300	Bellenden Ker	Bellenden Ker Potable Water Scheme	Potable water scheme	QG1.7	AS48	Total drinking water storage volume	1.1	ML
Cairns Regional Council	9300	Bellenden Ker	Bellenden Ker Potable Water Scheme	Potable water scheme	QG1.23	AS56	Volume water lost: drinking water	23.6	ML
Cairns Regional Council	9300	Bellenden Ker	Bellenden Ker Potable Water Scheme	Potable water scheme	QG4.5	AS8.1	Water main breaks per 100 km main	45.1	per 100 km water main
Cairns Regional Council	9300	Bellenden Ker	Bellenden Ker Potable Water Scheme	Potable water scheme	QG1.24	CS1.1	Population receiving water services	289	People
Cairns Regional Council	9300	Bellenden Ker	Bellenden Ker Potable Water Scheme	Potable water scheme	QG4.12	CS10	Water service complaints per 1000 connections	0	per 1000 connections
Cairns Regional Council	9300	Bellenden Ker	Bellenden Ker Potable Water Scheme	Potable water scheme	QG4.14	CS12	Water and sewerage account complaints per 1000 connections	0	per 1000 connections
Cairns Regional Council	9300	Bellenden Ker	Bellenden Ker Potable Water Scheme	Potable water scheme	QG4.11	CS13	Water and sewerage complaints (all) per 1000 connections	8.4	per 1000 connections
Cairns Regional Council	9300	Bellenden Ker	Bellenden Ker Potable Water Scheme	Potable water scheme	QG4.7	CS17	Average number unplanned interruptions: drinking water	352.9	per 1000 connections
Cairns Regional Council	9300	Bellenden Ker	Bellenden Ker Potable Water Scheme	Potable water scheme	QG1.13	CS2.1	Connected residential properties: water	117	Connections
Cairns Regional Council	9300	Bellenden Ker	Bellenden Ker Potable Water Scheme	Potable water scheme	QG4.24	CS20.1	Number drinking water complaints: water quality	1	Count
Cairns Regional Council	9300	Bellenden Ker	Bellenden Ker Potable Water Scheme	Potable water scheme	QG4.21	CS22.1	Number drinking water complaints: service	0	Count
Cairns Regional Council	9300	Bellenden Ker	Bellenden Ker Potable Water Scheme	Potable water scheme	QG4.23	CS23.1	Number drinking water and sewerage complaints: accounts	0	Count
Cairns Regional Council	9300	Bellenden Ker	Bellenden Ker Potable Water Scheme	Potable water scheme	QG1.14	CS3.1	Connected non-residential properties: water	2	Connections
Cairns Regional Council	9300	Bellenden Ker	Bellenden Ker Potable Water Scheme	Potable water scheme	QG4.20	CS61	Number connections affected by unplanned interruptions	42	Count
Cairns Regional Council	9300	Bellenden Ker	Bellenden Ker Potable Water Scheme	Potable water scheme	QG4.8a	CS66	% CSS response target met: water incidents	75	%
Cairns Regional Council	9300	Bellenden Ker	Bellenden Ker Potable Water Scheme	Potable water scheme	QG4.10	CS9	Water quality complaints per 1000 connections	8.4	per 1000 connections
Cairns Regional Council	9300	Bellenden Ker	Bellenden Ker Potable Water Scheme	Potable water scheme	QG1.8	WA1	Volume water self-sourced: surface water	50.7	ML
Cairns Regional Council	9300	Bellenden Ker	Bellenden Ker Potable Water Scheme	Potable water scheme	QG1.35	WA124	Volume drinking+non-drinking water used by your organisation	0.3	ML
Cairns Regional Council	9300	Bellenden Ker	Bellenden Ker Potable Water Scheme	Potable water scheme	QG1.37	WA197	Volume drinking+non-drinking water returned to surface water	NR	ML
Cairns Regional Council	9300	Bellenden Ker	Bellenden Ker Potable Water Scheme	Potable water scheme	QG1.9a	WA2	Volume water self-sourced: groundwater	NR	ML
Cairns Regional Council	9300	Bellenden Ker	Bellenden Ker Potable Water Scheme	Potable water scheme	QG1.5	WA201	Maximum daily demand	0.3	ML/day

organisation	scheme id	scheme	scheme long name	scheme type	KPI code	SWIM code	indicator title	value	units
Cairns Regional Council	9300	Bellenden Ker	Bellenden Ker Potable Water Scheme	Potable water scheme	QG1.21	WA223	Volume all water imported: internal and external	NR	ML
Cairns Regional Council	9300	Bellenden Ker	Bellenden Ker Potable Water Scheme	Potable water scheme	QG1.22	WA224	Volume all water exported: internal and external	NR	ML
Cairns Regional Council	9300	Bellenden Ker	Bellenden Ker Potable Water Scheme	Potable water scheme	QG1.6a	WA225	Volume drinking water produced at a water treatment plant	NR	ML
Cairns Regional Council	9300	Bellenden Ker	Bellenden Ker Potable Water Scheme	Potable water scheme	QG1.29	WA233	Total volume drinking+non-drinking water exported: external	NR	ML
Cairns Regional Council	9300	Bellenden Ker	Bellenden Ker Potable Water Scheme	Potable water scheme	QG1.31	WA238	Volume drinking+non-drinking water imported: external (all Suppliers)	NR	ML
Cairns Regional Council	9300	Bellenden Ker	Bellenden Ker Potable Water Scheme	Potable water scheme	QG1.17a	WA32	Volume drinking water supplied: residential	14.3	ML
Cairns Regional Council	9300	Bellenden Ker	Bellenden Ker Potable Water Scheme	Potable water scheme	QG1.18a	WA34	Volume drinking water supplied: non-residential	11.5	ML
Cairns Regional Council	9300	Bellenden Ker	Bellenden Ker Potable Water Scheme	Potable water scheme	QG1.10	WA61	Volume water self-sourced: desalination marine water	NR	ML
Cairns Regional Council	9300	Bellenden Ker	Bellenden Ker Potable Water Scheme	Potable water scheme	QG1.12	WA7	Volume water sourced: all	50.7	ML
Cairns Regional Council	9300	Bellenden Ker	Bellenden Ker Potable Water Scheme	Potable water scheme	QG2.10a	WS11	Water restriction duration: PWCM	365	days
Cairns Regional Council	9300	Bellenden Ker	Bellenden Ker Potable Water Scheme	Potable water scheme	QG2.10b	WS12	Water restriction duration: Level 1	0	days
Cairns Regional Council	9300	Bellenden Ker	Bellenden Ker Potable Water Scheme	Potable water scheme	QG2.10c	WS13	Water restriction duration: Level 2	0	days
Cairns Regional Council	9300	Bellenden Ker	Bellenden Ker Potable Water Scheme	Potable water scheme	QG2.10d	WS14	Water restriction duration: Level 3	0	days
Cairns Regional Council	9300	Bellenden Ker	Bellenden Ker Potable Water Scheme	Potable water scheme	QG2.10e	WS15	Water restriction duration: Level 4	0	days
Cairns Regional Council	9300	Bellenden Ker	Bellenden Ker Potable Water Scheme	Potable water scheme	QG2.10f	WS16	Water restriction duration: Level 5 (or greater)	0	days
Cairns Regional Council	9300	Bellenden Ker	Bellenden Ker Potable Water Scheme	Potable water scheme	QG2.11a	WS17	Has asset management planning been undertaken in the last 10 yrs?	yes	yes/no
Cairns Regional Council	9300	Bellenden Ker	Bellenden Ker Potable Water Scheme	Potable water scheme	QG2.11b	WS18	Has drought management planning been undertaken in the last 10 yrs?	yes	yes/no
Cairns Regional Council	9300	Bellenden Ker	Bellenden Ker Potable Water Scheme	Potable water scheme	QG2.11c	WS19	Has water demand forecasts been developed or reviewed in the last 5 yrs?	yes	yes/no
Cairns Regional Council	9300	Bellenden Ker	Bellenden Ker Potable Water Scheme	Potable water scheme	QG2.11d	WS20	Has assessment of key capacity constraints of water infrastructure been undertaken in last 10 yrs?	yes	yes/no
Cairns Regional Council	9300	Bellenden Ker	Bellenden Ker Potable Water Scheme	Potable water scheme	QG2.11e	WS21	Has the timing for potential future supply augmentation been assessed in the last 10 yrs?	yes	yes/no
Cairns Regional Council	9300	Bellenden Ker	Bellenden Ker Potable Water Scheme	Potable water scheme	QG2.12	WS22	Months water supply remaining as at 30 June (KPI level): with contingency	6	1,2,3,4,5,6
Cairns Regional Council	9300	Bellenden Ker	Bellenden Ker Potable Water Scheme	Potable water scheme	QG2.13	WS23	Confidence water demand will be met: next 18 mths	high	high,fair,unsure,low,very low
Cairns Regional Council	9300	Bellenden Ker	Bellenden Ker Potable Water Scheme	Potable water scheme	QG2.14	WS24	Confidence water demand will be met: next 5 yrs	high	high,fair,unsure,low,very low
Cairns Regional Council	9300	Bellenden Ker	Bellenden Ker Potable Water Scheme	Potable water scheme	QG2.12a	WS28	Months water supply remaining as at 30 June (KPI level): without contingency	6	1,2,3,4,5,6
Cairns Regional Council	9300	Bellenden Ker	Bellenden Ker Potable Water Scheme	Potable water scheme	QG2.3	WS3	Available contingency supplies	yes	yes/no

organisation	scheme id	scheme	scheme long name	scheme type	KPI code	SWIM code	indicator title	value	units
Cairns Regional Council	9302	Bramston Beach	Bramston Beach Potable Water Scheme	Potable water scheme	QG1.4a	AS1	Number water treatment plants: providing full treatment	0	Count
Cairns Regional Council	9302	Bramston Beach	Bramston Beach Potable Water Scheme	Potable water scheme	QG4.18	AS14.1	Number of water main breaks, bursts and leaks	3	Count
Cairns Regional Council	9302	Bramston Beach	Bramston Beach Potable Water Scheme	Potable water scheme	QG1.1	AS2	Length water mains: all	8.1	km
Cairns Regional Council	9302	Bramston Beach	Bramston Beach Potable Water Scheme	Potable water scheme	QG1.4b	AS47	Capacity of water treatment plants	NR	ML/day
Cairns Regional Council	9302	Bramston Beach	Bramston Beach Potable Water Scheme	Potable water scheme	QG1.7	AS48	Total drinking water storage volume	0.81	ML
Cairns Regional Council	9302	Bramston Beach	Bramston Beach Potable Water Scheme	Potable water scheme	QG1.23	AS56	Volume water lost: drinking water	3.4	ML
Cairns Regional Council	9302	Bramston Beach	Bramston Beach Potable Water Scheme	Potable water scheme	QG4.5	AS8.1	Water main breaks per 100 km main	37.1	per 100 km water main
Cairns Regional Council	9302	Bramston Beach	Bramston Beach Potable Water Scheme	Potable water scheme	QG1.24	CS1.1	Population receiving water services	378	People
Cairns Regional Council	9302	Bramston Beach	Bramston Beach Potable Water Scheme	Potable water scheme	QG4.12	CS10	Water service complaints per 1000 connections	0	per 1000 connections
Cairns Regional Council	9302	Bramston Beach	Bramston Beach Potable Water Scheme	Potable water scheme	QG4.14	CS12	Water and sewerage account complaints per 1000 connections	0	per 1000 connections
Cairns Regional Council	9302	Bramston Beach	Bramston Beach Potable Water Scheme	Potable water scheme	QG4.11	CS13	Water and sewerage complaints (all) per 1000 connections	6.3	per 1000 connections
Cairns Regional Council	9302	Bramston Beach	Bramston Beach Potable Water Scheme	Potable water scheme	QG4.7	CS17	Average number unplanned interruptions: drinking water	0	per 1000 connections
Cairns Regional Council	9302	Bramston Beach	Bramston Beach Potable Water Scheme	Potable water scheme	QG1.13	CS2.1	Connected residential properties: water	156	Connections
Cairns Regional Council	9302	Bramston Beach	Bramston Beach Potable Water Scheme	Potable water scheme	QG4.24	CS20.1	Number drinking water complaints: water quality	1	Count
Cairns Regional Council	9302	Bramston Beach	Bramston Beach Potable Water Scheme	Potable water scheme	QG4.21	CS22.1	Number drinking water complaints: service	0	Count
Cairns Regional Council	9302	Bramston Beach	Bramston Beach Potable Water Scheme	Potable water scheme	QG4.23	CS23.1	Number drinking water and sewerage complaints: accounts	0	Count
Cairns Regional Council	9302	Bramston Beach	Bramston Beach Potable Water Scheme	Potable water scheme	QG1.14	CS3.1	Connected non-residential properties: water	4	Connections
Cairns Regional Council	9302	Bramston Beach	Bramston Beach Potable Water Scheme	Potable water scheme	QG4.20	CS61	Number connections affected by unplanned interruptions	0	Count
Cairns Regional Council	9302	Bramston Beach	Bramston Beach Potable Water Scheme	Potable water scheme	QG4.8a	CS66	% CSS response target met: water incidents	67	%
Cairns Regional Council	9302	Bramston Beach	Bramston Beach Potable Water Scheme	Potable water scheme	QG4.10	CS9	Water quality complaints per 1000 connections	6.3	per 1000 connections
Cairns Regional Council	9302	Bramston Beach	Bramston Beach Potable Water Scheme	Potable water scheme	QG1.8	WA1	Volume water self-sourced: surface water	35.4	ML
Cairns Regional Council	9302	Bramston Beach	Bramston Beach Potable Water Scheme	Potable water scheme	QG1.35	WA124	Volume drinking+non-drinking water used by your organisation	3.2	ML
Cairns Regional Council	9302	Bramston Beach	Bramston Beach Potable Water Scheme	Potable water scheme	QG1.37	WA197	Volume drinking+non-drinking water returned to surface water	NR	ML
Cairns Regional Council	9302	Bramston Beach	Bramston Beach Potable Water Scheme	Potable water scheme	QG1.9a	WA2	Volume water self-sourced: groundwater	NR	ML
Cairns Regional Council	9302	Bramston Beach	Bramston Beach Potable Water Scheme	Potable water scheme	QG1.5	WA201	Maximum daily demand	0.2	ML/day

organisation	scheme id	scheme	scheme long name	scheme type	KPI code	SWIM code	indicator title	value	units
Cairns Regional Council	9302	Bramston Beach	Bramston Beach Potable Water Scheme	Potable water scheme	QG1.21	WA223	Volume all water imported: internal and external	NR	ML
Cairns Regional Council	9302	Bramston Beach	Bramston Beach Potable Water Scheme	Potable water scheme	QG1.22	WA224	Volume all water exported: internal and external	NR	ML
Cairns Regional Council	9302	Bramston Beach	Bramston Beach Potable Water Scheme	Potable water scheme	QG1.6a	WA225	Volume drinking water produced at a water treatment plant	NR	ML
Cairns Regional Council	9302	Bramston Beach	Bramston Beach Potable Water Scheme	Potable water scheme	QG1.29	WA233	Total volume drinking+non-drinking water exported: external	NR	ML
Cairns Regional Council	9302	Bramston Beach	Bramston Beach Potable Water Scheme	Potable water scheme	QG1.31	WA238	Volume drinking+non-drinking water imported: external (all Suppliers)	NR	ML
Cairns Regional Council	9302	Bramston Beach	Bramston Beach Potable Water Scheme	Potable water scheme	QG1.17a	WA32	Volume drinking water supplied: residential	23.3	ML
Cairns Regional Council	9302	Bramston Beach	Bramston Beach Potable Water Scheme	Potable water scheme	QG1.18a	WA34	Volume drinking water supplied: non-residential	4.5	ML
Cairns Regional Council	9302	Bramston Beach	Bramston Beach Potable Water Scheme	Potable water scheme	QG1.10	WA61	Volume water self-sourced: desalination marine water	NR	ML
Cairns Regional Council	9302	Bramston Beach	Bramston Beach Potable Water Scheme	Potable water scheme	QG1.12	WA7	Volume water sourced: all	35.4	ML
Cairns Regional Council	9302	Bramston Beach	Bramston Beach Potable Water Scheme	Potable water scheme	QG2.10a	WS11	Water restriction duration: PWCM	365	days
Cairns Regional Council	9302	Bramston Beach	Bramston Beach Potable Water Scheme	Potable water scheme	QG2.10b	WS12	Water restriction duration: Level 1	0	days
Cairns Regional Council	9302	Bramston Beach	Bramston Beach Potable Water Scheme	Potable water scheme	QG2.10c	WS13	Water restriction duration: Level 2	0	days
Cairns Regional Council	9302	Bramston Beach	Bramston Beach Potable Water Scheme	Potable water scheme	QG2.10d	WS14	Water restriction duration: Level 3	0	days
Cairns Regional Council	9302	Bramston Beach	Bramston Beach Potable Water Scheme	Potable water scheme	QG2.10e	WS15	Water restriction duration: Level 4	0	days
Cairns Regional Council	9302	Bramston Beach	Bramston Beach Potable Water Scheme	Potable water scheme	QG2.10f	WS16	Water restriction duration: Level 5 (or greater)	0	days
Cairns Regional Council	9302	Bramston Beach	Bramston Beach Potable Water Scheme	Potable water scheme	QG2.11a	WS17	Has asset management planning been undertaken in the last 10 yrs?	yes	yes/no
Cairns Regional Council	9302	Bramston Beach	Bramston Beach Potable Water Scheme	Potable water scheme	QG2.11b	WS18	Has drought management planning been undertaken in the last 10 yrs?	yes	yes/no
Cairns Regional Council	9302	Bramston Beach	Bramston Beach Potable Water Scheme	Potable water scheme	QG2.11c	WS19	Has water demand forecasts been developed or reviewed in the last 5 yrs?	yes	yes/no
Cairns Regional Council	9302	Bramston Beach	Bramston Beach Potable Water Scheme	Potable water scheme	QG2.11d	WS20	Has assessment of key capacity constraints of water infrastructure been undertaken in last 10 yrs?	yes	yes/no
Cairns Regional Council	9302	Bramston Beach	Bramston Beach Potable Water Scheme	Potable water scheme	QG2.11e	WS21	Has the timing for potential future supply augmentation been assessed in the last 10 yrs?	yes	yes/no
Cairns Regional Council	9302	Bramston Beach	Bramston Beach Potable Water Scheme	Potable water scheme	QG2.12	WS22	Months water supply remaining as at 30 June (KPI level): with contingency	6	1,2,3,4,5,6
Cairns Regional Council	9302	Bramston Beach	Bramston Beach Potable Water Scheme	Potable water scheme	QG2.13	WS23	Confidence water demand will be met: next 18 mths	fair	high,fair,unsure,low,very low
Cairns Regional Council	9302	Bramston Beach	Bramston Beach Potable Water Scheme	Potable water scheme	QG2.14	WS24	Confidence water demand will be met: next 5 yrs	fair	high,fair,unsure,low,very low
Cairns Regional Council	9302	Bramston Beach	Bramston Beach Potable Water Scheme	Potable water scheme	QG2.12a	WS28	Months water supply remaining as at 30 June (KPI level): without contingency	4	1,2,3,4,5,6
Cairns Regional Council	9302	Bramston Beach	Bramston Beach Potable Water Scheme	Potable water scheme	QG2.3	WS3	Available contingency supplies	yes	yes/no

organisation	scheme id	scheme	scheme long name	scheme type	KPI code	SWIM code	indicator title	value	units
Cairns Regional Council	9309	Copperlode/Behana	Copperlode/Behana Potable Water Scheme	Potable water scheme	QG1.4a	AS1	Number water treatment plants: providing full treatment	1	Count
Cairns Regional Council	9309	Copperlode/Behana	Copperlode/Behana Potable Water Scheme	Potable water scheme	QG4.18	AS14.1	Number of water main breaks, bursts and leaks	460	Count
Cairns Regional Council	9309	Copperlode/Behana	Copperlode/Behana Potable Water Scheme	Potable water scheme	QG1.1	AS2	Length water mains: all	2155.2	km
Cairns Regional Council	9309	Copperlode/Behana	Copperlode/Behana Potable Water Scheme	Potable water scheme	QG1.4b	AS47	Capacity of water treatment plants	104	ML/day
Cairns Regional Council	9309	Copperlode/Behana	Copperlode/Behana Potable Water Scheme	Potable water scheme	QG1.7	AS48	Total drinking water storage volume	321.88	ML
Cairns Regional Council	9309	Copperlode/Behana	Copperlode/Behana Potable Water Scheme	Potable water scheme	QG1.23	AS56	Volume water lost: drinking water	2969.2	ML
Cairns Regional Council	9309	Copperlode/Behana	Copperlode/Behana Potable Water Scheme	Potable water scheme	QG4.5	AS8.1	Water main breaks per 100 km main	21.3	per 100 km water main
Cairns Regional Council	9309	Copperlode/Behana	Copperlode/Behana Potable Water Scheme	Potable water scheme	QG1.24	CS1.1	Population receiving water services	174321	People
Cairns Regional Council	9309	Copperlode/Behana	Copperlode/Behana Potable Water Scheme	Potable water scheme	QG4.12	CS10	Water service complaints per 1000 connections	0	per 1000 connections
Cairns Regional Council	9309	Copperlode/Behana	Copperlode/Behana Potable Water Scheme	Potable water scheme	QG4.14	CS12	Water and sewerage account complaints per 1000 connections	0	per 1000 connections
Cairns Regional Council	9309	Copperlode/Behana	Copperlode/Behana Potable Water Scheme	Potable water scheme	QG4.11	CS13	Water and sewerage complaints (all) per 1000 connections	0	per 1000 connections
Cairns Regional Council	9309	Copperlode/Behana	Copperlode/Behana Potable Water Scheme	Potable water scheme	QG4.7	CS17	Average number unplanned interruptions: drinking water	152.9	per 1000 connections
Cairns Regional Council	9309	Copperlode/Behana	Copperlode/Behana Potable Water Scheme	Potable water scheme	QG1.13	CS2.1	Connected residential properties: water	70632	Connections
Cairns Regional Council	9309	Copperlode/Behana	Copperlode/Behana Potable Water Scheme	Potable water scheme	QG4.24	CS20.1	Number drinking water complaints: water quality	354	Count
Cairns Regional Council	9309	Copperlode/Behana	Copperlode/Behana Potable Water Scheme	Potable water scheme	QG4.21	CS22.1	Number drinking water complaints: service	3	Count
Cairns Regional Council	9309	Copperlode/Behana	Copperlode/Behana Potable Water Scheme	Potable water scheme	QG4.23	CS23.1	Number drinking water and sewerage complaints: accounts	3	Count
Cairns Regional Council	9309	Copperlode/Behana	Copperlode/Behana Potable Water Scheme	Potable water scheme	QG1.14	CS3.1	Connected non-residential properties: water	4502	Connections
Cairns Regional Council	9309	Copperlode/Behana	Copperlode/Behana Potable Water Scheme	Potable water scheme	QG4.20	CS61	Number connections affected by unplanned interruptions	11488	Count
Cairns Regional Council	9309	Copperlode/Behana	Copperlode/Behana Potable Water Scheme	Potable water scheme	QG4.8a	CS66	% CSS response target met: water incidents	88	%
Cairns Regional Council	9309	Copperlode/Behana	Copperlode/Behana Potable Water Scheme	Potable water scheme	QG4.10	CS9	Water quality complaints per 1000 connections	4.7	per 1000 connections
Cairns Regional Council	9309	Copperlode/Behana	Copperlode/Behana Potable Water Scheme	Potable water scheme	QG1.8	WA1	Volume water self-sourced: surface water	28445.8	ML
Cairns Regional Council	9309	Copperlode/Behana	Copperlode/Behana Potable Water Scheme	Potable water scheme	QG1.35	WA124	Volume drinking+non-drinking water used by your organisation	983.5	ML
Cairns Regional Council	9309	Copperlode/Behana	Copperlode/Behana Potable Water Scheme	Potable water scheme	QG1.37	WA197	Volume drinking+non-drinking water returned to surface water	NR	ML
Cairns Regional Council	9309	Copperlode/Behana	Copperlode/Behana Potable Water Scheme	Potable water scheme	QG1.9a	WA2	Volume water self-sourced: groundwater	NR	ML
Cairns Regional Council	9309	Copperlode/Behana	Copperlode/Behana Potable Water Scheme	Potable water scheme	QG1.5	WA201	Maximum daily demand	107.6	ML/day

organisation	scheme id	scheme	scheme long name	scheme type	KPI code	SWIM code	indicator title	value	units
Cairns Regional Council	9309	Copperlode/Behana	Copperlode/Behana Potable Water Scheme	Potable water scheme	QG1.21	WA223	Volume all water imported: internal and external	NR	ML
Cairns Regional Council	9309	Copperlode/Behana	Copperlode/Behana Potable Water Scheme	Potable water scheme	QG1.22	WA224	Volume all water exported: internal and external	NR	ML
Cairns Regional Council	9309	Copperlode/Behana	Copperlode/Behana Potable Water Scheme	Potable water scheme	QG1.6a	WA225	Volume drinking water produced at a water treatment plant	27203.6	ML
Cairns Regional Council	9309	Copperlode/Behana	Copperlode/Behana Potable Water Scheme	Potable water scheme	QG1.29	WA233	Total volume drinking+non-drinking water exported: external	NR	ML
Cairns Regional Council	9309	Copperlode/Behana	Copperlode/Behana Potable Water Scheme	Potable water scheme	QG1.31	WA238	Volume drinking+non-drinking water imported: external (all Suppliers)	NR	ML
Cairns Regional Council	9309	Copperlode/Behana	Copperlode/Behana Potable Water Scheme	Potable water scheme	QG1.17a	WA32	Volume drinking water supplied: residential	17811.6	ML
Cairns Regional Council	9309	Copperlode/Behana	Copperlode/Behana Potable Water Scheme	Potable water scheme	QG1.18a	WA34	Volume drinking water supplied: non-residential	6286.8	ML
Cairns Regional Council	9309	Copperlode/Behana	Copperlode/Behana Potable Water Scheme	Potable water scheme	QG1.10	WA61	Volume water self-sourced: desalination marine water	NR	ML
Cairns Regional Council	9309	Copperlode/Behana	Copperlode/Behana Potable Water Scheme	Potable water scheme	QG1.12	WA7	Volume water sourced: all	28445.8	ML
Cairns Regional Council	9309	Copperlode/Behana	Copperlode/Behana Potable Water Scheme	Potable water scheme	QG2.10a	WS11	Water restriction duration: PWCM	365	days
Cairns Regional Council	9309	Copperlode/Behana	Copperlode/Behana Potable Water Scheme	Potable water scheme	QG2.10b	WS12	Water restriction duration: Level 1	0	days
Cairns Regional Council	9309	Copperlode/Behana	Copperlode/Behana Potable Water Scheme	Potable water scheme	QG2.10c	WS13	Water restriction duration: Level 2	0	days
Cairns Regional Council	9309	Copperlode/Behana	Copperlode/Behana Potable Water Scheme	Potable water scheme	QG2.10d	WS14	Water restriction duration: Level 3	0	days
Cairns Regional Council	9309	Copperlode/Behana	Copperlode/Behana Potable Water Scheme	Potable water scheme	QG2.10e	WS15	Water restriction duration: Level 4	0	days
Cairns Regional Council	9309	Copperlode/Behana	Copperlode/Behana Potable Water Scheme	Potable water scheme	QG2.10f	WS16	Water restriction duration: Level 5 (or greater)	0	days
Cairns Regional Council	9309	Copperlode/Behana	Copperlode/Behana Potable Water Scheme	Potable water scheme	QG2.11a	WS17	Has asset management planning been undertaken in the last 10 yrs?	yes	yes/no
Cairns Regional Council	9309	Copperlode/Behana	Copperlode/Behana Potable Water Scheme	Potable water scheme	QG2.11b	WS18	Has drought management planning been undertaken in the last 10 yrs?	yes	yes/no
Cairns Regional Council	9309	Copperlode/Behana	Copperlode/Behana Potable Water Scheme	Potable water scheme	QG2.11c	WS19	Has water demand forecasts been developed or reviewed in the last 5 yrs?	yes	yes/no
Cairns Regional Council	9309	Copperlode/Behana	Copperlode/Behana Potable Water Scheme	Potable water scheme	QG2.11d	WS20	Has assessment of key capacity constraints of water infrastructure been undertaken in last 10 yrs?	yes	yes/no
Cairns Regional Council	9309	Copperlode/Behana	Copperlode/Behana Potable Water Scheme	Potable water scheme	QG2.11e	WS21	Has the timing for potential future supply augmentation been assessed in the last 10 yrs?	yes	yes/no
Cairns Regional Council	9309	Copperlode/Behana	Copperlode/Behana Potable Water Scheme	Potable water scheme	QG2.12	WS22	Months water supply remaining as at 30 June (KPI level): with contingency	6	1,2,3,4,5,6
Cairns Regional Council	9309	Copperlode/Behana	Copperlode/Behana Potable Water Scheme	Potable water scheme	QG2.13	WS23	Confidence water demand will be met: next 18 mths	high	high,fair,unsure,low,very low
Cairns Regional Council	9309	Copperlode/Behana	Copperlode/Behana Potable Water Scheme	Potable water scheme	QG2.14	WS24	Confidence water demand will be met: next 5 yrs	high	high,fair,unsure,low,very low
Cairns Regional Council	9309	Copperlode/Behana	Copperlode/Behana Potable Water Scheme	Potable water scheme	QG2.12a	WS28	Months water supply remaining as at 30 June (KPI level): without contingency	6	1,2,3,4,5,6
Cairns Regional Council	9309	Copperlode/Behana	Copperlode/Behana Potable Water Scheme	Potable water scheme	QG2.3	WS3	Available contingency supplies	yes	yes/no

organisation	scheme id	scheme	scheme long name	scheme type	KPI code	SWIM code	indicator title	value	units
Cairns Regional Council	9305	Fishery Falls	Fishery Falls Potable Water Scheme	Potable water scheme	QG1.4a	AS1	Number water treatment plants: providing full treatment	0	Count
Cairns Regional Council	9305	Fishery Falls	Fishery Falls Potable Water Scheme	Potable water scheme	QG4.18	AS14.1	Number of water main breaks, bursts and leaks	9	Count
Cairns Regional Council	9305	Fishery Falls	Fishery Falls Potable Water Scheme	Potable water scheme	QG1.1	AS2	Length water mains: all	25.5	km
Cairns Regional Council	9305	Fishery Falls	Fishery Falls Potable Water Scheme	Potable water scheme	QG1.4b	AS47	Capacity of water treatment plants	NR	ML/day
Cairns Regional Council	9305	Fishery Falls	Fishery Falls Potable Water Scheme	Potable water scheme	QG1.7	AS48	Total drinking water storage volume	0.99	ML
Cairns Regional Council	9305	Fishery Falls	Fishery Falls Potable Water Scheme	Potable water scheme	QG1.23	AS56	Volume water lost: drinking water	5.9	ML
Cairns Regional Council	9305	Fishery Falls	Fishery Falls Potable Water Scheme	Potable water scheme	QG4.5	AS8.1	Water main breaks per 100 km main	35.3	per 100 km water main
Cairns Regional Council	9305	Fishery Falls	Fishery Falls Potable Water Scheme	Potable water scheme	QG1.24	CS1.1	Population receiving water services	444	People
Cairns Regional Council	9305	Fishery Falls	Fishery Falls Potable Water Scheme	Potable water scheme	QG4.12	CS10	Water service complaints per 1000 connections	0	per 1000 connections
Cairns Regional Council	9305	Fishery Falls	Fishery Falls Potable Water Scheme	Potable water scheme	QG4.14	CS12	Water and sewerage account complaints per 1000 connections	0	per 1000 connections
Cairns Regional Council	9305	Fishery Falls	Fishery Falls Potable Water Scheme	Potable water scheme	QG4.11	CS13	Water and sewerage complaints (all) per 1000 connections	0	per 1000 connections
Cairns Regional Council	9305	Fishery Falls	Fishery Falls Potable Water Scheme	Potable water scheme	QG4.7	CS17	Average number unplanned interruptions: drinking water	442.1	per 1000 connections
Cairns Regional Council	9305	Fishery Falls	Fishery Falls Potable Water Scheme	Potable water scheme	QG1.13	CS2.1	Connected residential properties: water	180	Connections
Cairns Regional Council	9305	Fishery Falls	Fishery Falls Potable Water Scheme	Potable water scheme	QG4.24	CS20.1	Number drinking water complaints: water quality	0	Count
Cairns Regional Council	9305	Fishery Falls	Fishery Falls Potable Water Scheme	Potable water scheme	QG4.21	CS22.1	Number drinking water complaints: service	0	Count
Cairns Regional Council	9305	Fishery Falls	Fishery Falls Potable Water Scheme	Potable water scheme	QG4.23	CS23.1	Number drinking water and sewerage complaints: accounts	0	Count
Cairns Regional Council	9305	Fishery Falls	Fishery Falls Potable Water Scheme	Potable water scheme	QG1.14	CS3.1	Connected non-residential properties: water	10	Connections
Cairns Regional Council	9305	Fishery Falls	Fishery Falls Potable Water Scheme	Potable water scheme	QG4.20	CS61	Number connections affected by unplanned interruptions	84	Count
Cairns Regional Council	9305	Fishery Falls	Fishery Falls Potable Water Scheme	Potable water scheme	QG4.8a	CS66	% CSS response target met: water incidents	78	%
Cairns Regional Council	9305	Fishery Falls	Fishery Falls Potable Water Scheme	Potable water scheme	QG4.10	CS9	Water quality complaints per 1000 connections	0	per 1000 connections
Cairns Regional Council	9305	Fishery Falls	Fishery Falls Potable Water Scheme	Potable water scheme	QG1.8	WA1	Volume water self-sourced: surface water	78.6	ML
Cairns Regional Council	9305	Fishery Falls	Fishery Falls Potable Water Scheme	Potable water scheme	QG1.35	WA124	Volume drinking+non-drinking water used by your organisation	0.7	ML
Cairns Regional Council	9305	Fishery Falls	Fishery Falls Potable Water Scheme	Potable water scheme	QG1.37	WA197	Volume drinking+non-drinking water returned to surface water	NR	ML
Cairns Regional Council	9305	Fishery Falls	Fishery Falls Potable Water Scheme	Potable water scheme	QG1.9a	WA2	Volume water self-sourced: groundwater	NR	ML
Cairns Regional Council	9305	Fishery Falls	Fishery Falls Potable Water Scheme	Potable water scheme	QG1.5	WA201	Maximum daily demand	0.3	ML/day

organisation	scheme id	scheme	scheme long name	scheme type	KPI code	SWIM code	indicator title	value	units
Cairns Regional Council	9305	Fishery Falls	Fishery Falls Potable Water Scheme	Potable water scheme	QG1.21	WA223	Volume all water imported: internal and external	NR	ML
Cairns Regional Council	9305	Fishery Falls	Fishery Falls Potable Water Scheme	Potable water scheme	QG1.22	WA224	Volume all water exported: internal and external	NR	ML
Cairns Regional Council	9305	Fishery Falls	Fishery Falls Potable Water Scheme	Potable water scheme	QG1.6a	WA225	Volume drinking water produced at a water treatment plant	NR	ML
Cairns Regional Council	9305	Fishery Falls	Fishery Falls Potable Water Scheme	Potable water scheme	QG1.29	WA233	Total volume drinking+non-drinking water exported: external	NR	ML
Cairns Regional Council	9305	Fishery Falls	Fishery Falls Potable Water Scheme	Potable water scheme	QG1.31	WA238	Volume drinking+non-drinking water imported: external (all Suppliers)	NR	ML
Cairns Regional Council	9305	Fishery Falls	Fishery Falls Potable Water Scheme	Potable water scheme	QG1.17a	WA32	Volume drinking water supplied: residential	31.6	ML
Cairns Regional Council	9305	Fishery Falls	Fishery Falls Potable Water Scheme	Potable water scheme	QG1.18a	WA34	Volume drinking water supplied: non-residential	32.4	ML
Cairns Regional Council	9305	Fishery Falls	Fishery Falls Potable Water Scheme	Potable water scheme	QG1.10	WA61	Volume water self-sourced: desalination marine water	NR	ML
Cairns Regional Council	9305	Fishery Falls	Fishery Falls Potable Water Scheme	Potable water scheme	QG1.12	WA7	Volume water sourced: all	78.6	ML
Cairns Regional Council	9305	Fishery Falls	Fishery Falls Potable Water Scheme	Potable water scheme	QG2.10a	WS11	Water restriction duration: PWCM	365	days
Cairns Regional Council	9305	Fishery Falls	Fishery Falls Potable Water Scheme	Potable water scheme	QG2.10b	WS12	Water restriction duration: Level 1	0	days
Cairns Regional Council	9305	Fishery Falls	Fishery Falls Potable Water Scheme	Potable water scheme	QG2.10c	WS13	Water restriction duration: Level 2	0	days
Cairns Regional Council	9305	Fishery Falls	Fishery Falls Potable Water Scheme	Potable water scheme	QG2.10d	WS14	Water restriction duration: Level 3	0	days
Cairns Regional Council	9305	Fishery Falls	Fishery Falls Potable Water Scheme	Potable water scheme	QG2.10e	WS15	Water restriction duration: Level 4	0	days
Cairns Regional Council	9305	Fishery Falls	Fishery Falls Potable Water Scheme	Potable water scheme	QG2.10f	WS16	Water restriction duration: Level 5 (or greater)	0	days
Cairns Regional Council	9305	Fishery Falls	Fishery Falls Potable Water Scheme	Potable water scheme	QG2.11a	WS17	Has asset management planning been undertaken in the last 10 yrs?	yes	yes/no
Cairns Regional Council	9305	Fishery Falls	Fishery Falls Potable Water Scheme	Potable water scheme	QG2.11b	WS18	Has drought management planning been undertaken in the last 10 yrs?	yes	yes/no
Cairns Regional Council	9305	Fishery Falls	Fishery Falls Potable Water Scheme	Potable water scheme	QG2.11c	WS19	Has water demand forecasts been developed or reviewed in the last 5 yrs?	yes	yes/no
Cairns Regional Council	9305	Fishery Falls	Fishery Falls Potable Water Scheme	Potable water scheme	QG2.11d	WS20	Has assessment of key capacity constraints of water infrastructure been undertaken in last 10 yrs?	yes	yes/no
Cairns Regional Council	9305	Fishery Falls	Fishery Falls Potable Water Scheme	Potable water scheme	QG2.11e	WS21	Has the timing for potential future supply augmentation been assessed in the last 10 yrs?	yes	yes/no
Cairns Regional Council	9305	Fishery Falls	Fishery Falls Potable Water Scheme	Potable water scheme	QG2.12	WS22	Months water supply remaining as at 30 June (KPI level): with contingency	6	1,2,3,4,5,6
Cairns Regional Council	9305	Fishery Falls	Fishery Falls Potable Water Scheme	Potable water scheme	QG2.13	WS23	Confidence water demand will be met: next 18 mths	high	high,fair,unsure,low,very low
Cairns Regional Council	9305	Fishery Falls	Fishery Falls Potable Water Scheme	Potable water scheme	QG2.14	WS24	Confidence water demand will be met: next 5 yrs	high	high,fair,unsure,low,very low
Cairns Regional Council	9305	Fishery Falls	Fishery Falls Potable Water Scheme	Potable water scheme	QG2.12a	WS28	Months water supply remaining as at 30 June (KPI level): without contingency	6	1,2,3,4,5,6
Cairns Regional Council	9305	Fishery Falls	Fishery Falls Potable Water Scheme	Potable water scheme	QG2.3	WS3	Available contingency supplies	yes	yes/no

organisation	scheme id	scheme	scheme long name	scheme type	KPI code	SWIM code	indicator title	value	units
Cairns Regional Council	9301	Mirriwinni	Mirriwinni Potable Water Scheme	Potable water scheme	QG1.4a	AS1	Number water treatment plants: providing full treatment	0	Count
Cairns Regional Council	9301	Mirriwinni	Mirriwinni Potable Water Scheme	Potable water scheme	QG4.18	AS14.1	Number of water main breaks, bursts and leaks	2	Count
Cairns Regional Council	9301	Mirriwinni	Mirriwinni Potable Water Scheme	Potable water scheme	QG1.1	AS2	Length water mains: all	25.3	km
Cairns Regional Council	9301	Mirriwinni	Mirriwinni Potable Water Scheme	Potable water scheme	QG1.4b	AS47	Capacity of water treatment plants	NR	ML/day
Cairns Regional Council	9301	Mirriwinni	Mirriwinni Potable Water Scheme	Potable water scheme	QG1.7	AS48	Total drinking water storage volume	0.98	ML
Cairns Regional Council	9301	Mirriwinni	Mirriwinni Potable Water Scheme	Potable water scheme	QG1.23	AS56	Volume water lost: drinking water	20.4	ML
Cairns Regional Council	9301	Mirriwinni	Mirriwinni Potable Water Scheme	Potable water scheme	QG4.5	AS8.1	Water main breaks per 100 km main	7.9	per 100 km water main
Cairns Regional Council	9301	Mirriwinni	Mirriwinni Potable Water Scheme	Potable water scheme	QG1.24	CS1.1	Population receiving water services	471	People
Cairns Regional Council	9301	Mirriwinni	Mirriwinni Potable Water Scheme	Potable water scheme	QG4.12	CS10	Water service complaints per 1000 connections	0	per 1000 connections
Cairns Regional Council	9301	Mirriwinni	Mirriwinni Potable Water Scheme	Potable water scheme	QG4.14	CS12	Water and sewerage account complaints per 1000 connections	0	per 1000 connections
Cairns Regional Council	9301	Mirriwinni	Mirriwinni Potable Water Scheme	Potable water scheme	QG4.11	CS13	Water and sewerage complaints (all) per 1000 connections	0	per 1000 connections
Cairns Regional Council	9301	Mirriwinni	Mirriwinni Potable Water Scheme	Potable water scheme	QG4.7	CS17	Average number unplanned interruptions: drinking water	60.3	per 1000 connections
Cairns Regional Council	9301	Mirriwinni	Mirriwinni Potable Water Scheme	Potable water scheme	QG1.13	CS2.1	Connected residential properties: water	191	Connections
Cairns Regional Council	9301	Mirriwinni	Mirriwinni Potable Water Scheme	Potable water scheme	QG4.24	CS20.1	Number drinking water complaints: water quality	0	Count
Cairns Regional Council	9301	Mirriwinni	Mirriwinni Potable Water Scheme	Potable water scheme	QG4.21	CS22.1	Number drinking water complaints: service	0	Count
Cairns Regional Council	9301	Mirriwinni	Mirriwinni Potable Water Scheme	Potable water scheme	QG4.23	CS23.1	Number drinking water and sewerage complaints: accounts	0	Count
Cairns Regional Council	9301	Mirriwinni	Mirriwinni Potable Water Scheme	Potable water scheme	QG1.14	CS3.1	Connected non-residential properties: water	8	Connections
Cairns Regional Council	9301	Mirriwinni	Mirriwinni Potable Water Scheme	Potable water scheme	QG4.20	CS61	Number connections affected by unplanned interruptions	12	Count
Cairns Regional Council	9301	Mirriwinni	Mirriwinni Potable Water Scheme	Potable water scheme	QG4.8a	CS66	% CSS response target met: water incidents	50	%
Cairns Regional Council	9301	Mirriwinni	Mirriwinni Potable Water Scheme	Potable water scheme	QG4.10	CS9	Water quality complaints per 1000 connections	0	per 1000 connections
Cairns Regional Council	9301	Mirriwinni	Mirriwinni Potable Water Scheme	Potable water scheme	QG1.8	WA1	Volume water self-sourced: surface water	100.8	ML
Cairns Regional Council	9301	Mirriwinni	Mirriwinni Potable Water Scheme	Potable water scheme	QG1.35	WA124	Volume drinking+non-drinking water used by your organisation	0.1	ML
Cairns Regional Council	9301	Mirriwinni	Mirriwinni Potable Water Scheme	Potable water scheme	QG1.37	WA197	Volume drinking+non-drinking water returned to surface water	NR	ML
Cairns Regional Council	9301	Mirriwinni	Mirriwinni Potable Water Scheme	Potable water scheme	QG1.9a	WA2	Volume water self-sourced: groundwater	NR	ML
Cairns Regional Council	9301	Mirriwinni	Mirriwinni Potable Water Scheme	Potable water scheme	QG1.5	WA201	Maximum daily demand	0.4	ML/day

organisation	scheme id	scheme	scheme long name	scheme type	KPI code	SWIM code	indicator title	value	units
Cairns Regional Council	9301	Mirriwinni	Mirriwinni Potable Water Scheme	Potable water scheme	QG1.21	WA223	Volume all water imported: internal and external	NR	ML
Cairns Regional Council	9301	Mirriwinni	Mirriwinni Potable Water Scheme	Potable water scheme	QG1.22	WA224	Volume all water exported: internal and external	12	ML
Cairns Regional Council	9301	Mirriwinni	Mirriwinni Potable Water Scheme	Potable water scheme	QG1.6a	WA225	Volume drinking water produced at a water treatment plant	NR	ML
Cairns Regional Council	9301	Mirriwinni	Mirriwinni Potable Water Scheme	Potable water scheme	QG1.29	WA233	Total volume drinking+non-drinking water exported: external	NR	ML
Cairns Regional Council	9301	Mirriwinni	Mirriwinni Potable Water Scheme	Potable water scheme	QG1.31	WA238	Volume drinking+non-drinking water imported: external (all Suppliers)	NR	ML
Cairns Regional Council	9301	Mirriwinni	Mirriwinni Potable Water Scheme	Potable water scheme	QG1.17a	WA32	Volume drinking water supplied: residential	33.1	ML
Cairns Regional Council	9301	Mirriwinni	Mirriwinni Potable Water Scheme	Potable water scheme	QG1.18a	WA34	Volume drinking water supplied: non-residential	31.8	ML
Cairns Regional Council	9301	Mirriwinni	Mirriwinni Potable Water Scheme	Potable water scheme	QG1.10	WA61	Volume water self-sourced: desalination marine water	NR	ML
Cairns Regional Council	9301	Mirriwinni	Mirriwinni Potable Water Scheme	Potable water scheme	QG1.12	WA7	Volume water sourced: all	100.8	ML
Cairns Regional Council	9301	Mirriwinni	Mirriwinni Potable Water Scheme	Potable water scheme	QG2.10a	WS11	Water restriction duration: PWCM	365	days
Cairns Regional Council	9301	Mirriwinni	Mirriwinni Potable Water Scheme	Potable water scheme	QG2.10b	WS12	Water restriction duration: Level 1	0	days
Cairns Regional Council	9301	Mirriwinni	Mirriwinni Potable Water Scheme	Potable water scheme	QG2.10c	WS13	Water restriction duration: Level 2	0	days
Cairns Regional Council	9301	Mirriwinni	Mirriwinni Potable Water Scheme	Potable water scheme	QG2.10d	WS14	Water restriction duration: Level 3	0	days
Cairns Regional Council	9301	Mirriwinni	Mirriwinni Potable Water Scheme	Potable water scheme	QG2.10e	WS15	Water restriction duration: Level 4	0	days
Cairns Regional Council	9301	Mirriwinni	Mirriwinni Potable Water Scheme	Potable water scheme	QG2.10f	WS16	Water restriction duration: Level 5 (or greater)	0	days
Cairns Regional Council	9301	Mirriwinni	Mirriwinni Potable Water Scheme	Potable water scheme	QG2.11a	WS17	Has asset management planning been undertaken in the last 10 yrs?	yes	yes/no
Cairns Regional Council	9301	Mirriwinni	Mirriwinni Potable Water Scheme	Potable water scheme	QG2.11b	WS18	Has drought management planning been undertaken in the last 10 yrs?	yes	yes/no
Cairns Regional Council	9301	Mirriwinni	Mirriwinni Potable Water Scheme	Potable water scheme	QG2.11c	WS19	Has water demand forecasts been developed or reviewed in the last 5 yrs?	yes	yes/no
Cairns Regional Council	9301	Mirriwinni	Mirriwinni Potable Water Scheme	Potable water scheme	QG2.11d	WS20	Has assessment of key capacity constraints of water infrastructure been undertaken in last 10 yrs?	yes	yes/no
Cairns Regional Council	9301	Mirriwinni	Mirriwinni Potable Water Scheme	Potable water scheme	QG2.11e	WS21	Has the timing for potential future supply augmentation been assessed in the last 10 yrs?	yes	yes/no
Cairns Regional Council	9301	Mirriwinni	Mirriwinni Potable Water Scheme	Potable water scheme	QG2.12	WS22	Months water supply remaining as at 30 June (KPI level): with contingency	6	1,2,3,4,5,6
Cairns Regional Council	9301	Mirriwinni	Mirriwinni Potable Water Scheme	Potable water scheme	QG2.13	WS23	Confidence water demand will be met: next 18 mths	high	high,fair,unsure,low,very low
Cairns Regional Council	9301	Mirriwinni	Mirriwinni Potable Water Scheme	Potable water scheme	QG2.14	WS24	Confidence water demand will be met: next 5 yrs	high	high,fair,unsure,low,very low
Cairns Regional Council	9301	Mirriwinni	Mirriwinni Potable Water Scheme	Potable water scheme	QG2.12a	WS28	Months water supply remaining as at 30 June (KPI level): without contingency	6	1,2,3,4,5,6
Cairns Regional Council	9301	Mirriwinni	Mirriwinni Potable Water Scheme	Potable water scheme	QG2.3	WS3	Available contingency supplies	yes	yes/no

organisation	scheme id	scheme	scheme long name	scheme type	KPI code	SWIM code	indicator title	value	units
Cairns Regional Council	9306	Mountain View	Mountain View Potable Water Scheme	Potable water scheme	QG1.4a	AS1	Number water treatment plants: providing full treatment	0	Count
Cairns Regional Council	9306	Mountain View	Mountain View Potable Water Scheme	Potable water scheme	QG4.18	AS14.1	Number of water main breaks, bursts and leaks	0	Count
Cairns Regional Council	9306	Mountain View	Mountain View Potable Water Scheme	Potable water scheme	QG1.1	AS2	Length water mains: all	2.3	km
Cairns Regional Council	9306	Mountain View	Mountain View Potable Water Scheme	Potable water scheme	QG1.4b	AS47	Capacity of water treatment plants	NR	ML/day
Cairns Regional Council	9306	Mountain View	Mountain View Potable Water Scheme	Potable water scheme	QG1.7	AS48	Total drinking water storage volume	0.19	ML
Cairns Regional Council	9306	Mountain View	Mountain View Potable Water Scheme	Potable water scheme	QG1.23	AS56	Volume water lost: drinking water	0.2	ML
Cairns Regional Council	9306	Mountain View	Mountain View Potable Water Scheme	Potable water scheme	QG4.5	AS8.1	Water main breaks per 100 km main	0	per 100 km water main
Cairns Regional Council	9306	Mountain View	Mountain View Potable Water Scheme	Potable water scheme	QG1.24	CS1.1	Population receiving water services	84	People
Cairns Regional Council	9306	Mountain View	Mountain View Potable Water Scheme	Potable water scheme	QG4.12	CS10	Water service complaints per 1000 connections	0	per 1000 connections
Cairns Regional Council	9306	Mountain View	Mountain View Potable Water Scheme	Potable water scheme	QG4.14	CS12	Water and sewerage account complaints per 1000 connections	0	per 1000 connections
Cairns Regional Council	9306	Mountain View	Mountain View Potable Water Scheme	Potable water scheme	QG4.11	CS13	Water and sewerage complaints (all) per 1000 connections	0	per 1000 connections
Cairns Regional Council	9306	Mountain View	Mountain View Potable Water Scheme	Potable water scheme	QG4.7	CS17	Average number unplanned interruptions: drinking water	0	per 1000 connections
Cairns Regional Council	9306	Mountain View	Mountain View Potable Water Scheme	Potable water scheme	QG1.13	CS2.1	Connected residential properties: water	34	Connections
Cairns Regional Council	9306	Mountain View	Mountain View Potable Water Scheme	Potable water scheme	QG4.24	CS20.1	Number drinking water complaints: water quality	0	Count
Cairns Regional Council	9306	Mountain View	Mountain View Potable Water Scheme	Potable water scheme	QG4.21	CS22.1	Number drinking water complaints: service	0	Count
Cairns Regional Council	9306	Mountain View	Mountain View Potable Water Scheme	Potable water scheme	QG4.23	CS23.1	Number drinking water and sewerage complaints: accounts	0	Count
Cairns Regional Council	9306	Mountain View	Mountain View Potable Water Scheme	Potable water scheme	QG1.14	CS3.1	Connected non-residential properties: water	1	Connections
Cairns Regional Council	9306	Mountain View	Mountain View Potable Water Scheme	Potable water scheme	QG4.20	CS61	Number connections affected by unplanned interruptions	0	Count
Cairns Regional Council	9306	Mountain View	Mountain View Potable Water Scheme	Potable water scheme	QG4.8a	CS66	% CSS response target met: water incidents	100	%
Cairns Regional Council	9306	Mountain View	Mountain View Potable Water Scheme	Potable water scheme	QG4.10	CS9	Water quality complaints per 1000 connections	0	per 1000 connections
Cairns Regional Council	9306	Mountain View	Mountain View Potable Water Scheme	Potable water scheme	QG1.8	WA1	Volume water self-sourced: surface water	9.5	ML
Cairns Regional Council	9306	Mountain View	Mountain View Potable Water Scheme	Potable water scheme	QG1.35	WA124	Volume drinking+non-drinking water used by your organisation	0	ML
Cairns Regional Council	9306	Mountain View	Mountain View Potable Water Scheme	Potable water scheme	QG1.37	WA197	Volume drinking+non-drinking water returned to surface water	NR	ML
Cairns Regional Council	9306	Mountain View	Mountain View Potable Water Scheme	Potable water scheme	QG1.9a	WA2	Volume water self-sourced: groundwater	NR	ML
Cairns Regional Council	9306	Mountain View	Mountain View Potable Water Scheme	Potable water scheme	QG1.5	WA201	Maximum daily demand	0	ML/day

organisation	scheme id	scheme	scheme long name	scheme type	KPI code	SWIM code	indicator title	value	units
Cairns Regional Council	9306	Mountain View	Mountain View Potable Water Scheme	Potable water scheme	QG1.21	WA223	Volume all water imported: internal and external	NR	ML
Cairns Regional Council	9306	Mountain View	Mountain View Potable Water Scheme	Potable water scheme	QG1.22	WA224	Volume all water exported: internal and external	NR	ML
Cairns Regional Council	9306	Mountain View	Mountain View Potable Water Scheme	Potable water scheme	QG1.6a	WA225	Volume drinking water produced at a water treatment plant	NR	ML
Cairns Regional Council	9306	Mountain View	Mountain View Potable Water Scheme	Potable water scheme	QG1.29	WA233	Total volume drinking+non-drinking water exported: external	NR	ML
Cairns Regional Council	9306	Mountain View	Mountain View Potable Water Scheme	Potable water scheme	QG1.31	WA238	Volume drinking+non-drinking water imported: external (all Suppliers)	NR	ML
Cairns Regional Council	9306	Mountain View	Mountain View Potable Water Scheme	Potable water scheme	QG1.17a	WA32	Volume drinking water supplied: residential	9.3	ML
Cairns Regional Council	9306	Mountain View	Mountain View Potable Water Scheme	Potable water scheme	QG1.18a	WA34	Volume drinking water supplied: non-residential	0	ML
Cairns Regional Council	9306	Mountain View	Mountain View Potable Water Scheme	Potable water scheme	QG1.10	WA61	Volume water self-sourced: desalination marine water	NR	ML
Cairns Regional Council	9306	Mountain View	Mountain View Potable Water Scheme	Potable water scheme	QG1.12	WA7	Volume water sourced: all	9.5	ML
Cairns Regional Council	9306	Mountain View	Mountain View Potable Water Scheme	Potable water scheme	QG2.10a	WS11	Water restriction duration: PWCM	365	days
Cairns Regional Council	9306	Mountain View	Mountain View Potable Water Scheme	Potable water scheme	QG2.10b	WS12	Water restriction duration: Level 1	0	days
Cairns Regional Council	9306	Mountain View	Mountain View Potable Water Scheme	Potable water scheme	QG2.10c	WS13	Water restriction duration: Level 2	0	days
Cairns Regional Council	9306	Mountain View	Mountain View Potable Water Scheme	Potable water scheme	QG2.10d	WS14	Water restriction duration: Level 3	0	days
Cairns Regional Council	9306	Mountain View	Mountain View Potable Water Scheme	Potable water scheme	QG2.10e	WS15	Water restriction duration: Level 4	0	days
Cairns Regional Council	9306	Mountain View	Mountain View Potable Water Scheme	Potable water scheme	QG2.10f	WS16	Water restriction duration: Level 5 (or greater)	0	days
Cairns Regional Council	9306	Mountain View	Mountain View Potable Water Scheme	Potable water scheme	QG2.11a	WS17	Has asset management planning been undertaken in the last 10 yrs?	yes	yes/no
Cairns Regional Council	9306	Mountain View	Mountain View Potable Water Scheme	Potable water scheme	QG2.11b	WS18	Has drought management planning been undertaken in the last 10 yrs?	yes	yes/no
Cairns Regional Council	9306	Mountain View	Mountain View Potable Water Scheme	Potable water scheme	QG2.11c	WS19	Has water demand forecasts been developed or reviewed in the last 5 yrs?	yes	yes/no
Cairns Regional Council	9306	Mountain View	Mountain View Potable Water Scheme	Potable water scheme	QG2.11d	WS20	Has assessment of key capacity constraints of water infrastructure been undertaken in last 10 yrs?	yes	yes/no
Cairns Regional Council	9306	Mountain View	Mountain View Potable Water Scheme	Potable water scheme	QG2.11e	WS21	Has the timing for potential future supply augmentation been assessed in the last 10 yrs?	yes	yes/no
Cairns Regional Council	9306	Mountain View	Mountain View Potable Water Scheme	Potable water scheme	QG2.12	WS22	Months water supply remaining as at 30 June (KPI level): with contingency	6	1,2,3,4,5,6
Cairns Regional Council	9306	Mountain View	Mountain View Potable Water Scheme	Potable water scheme	QG2.13	WS23	Confidence water demand will be met: next 18 mths	high	high,fair,unsure,low,very low
Cairns Regional Council	9306	Mountain View	Mountain View Potable Water Scheme	Potable water scheme	QG2.14	WS24	Confidence water demand will be met: next 5 yrs	high	high,fair,unsure,low,very low
Cairns Regional Council	9306	Mountain View	Mountain View Potable Water Scheme	Potable water scheme	QG2.12a	WS28	Months water supply remaining as at 30 June (KPI level): without contingency	6	1,2,3,4,5,6
Cairns Regional Council	9306	Mountain View	Mountain View Potable Water Scheme	Potable water scheme	QG2.3	WS3	Available contingency supplies	yes	yes/no

organisation	scheme id	scheme	scheme long name	scheme type	KPI code	SWIM code	indicator title	value	units
Cairns Regional Council	9307	Orchid Valley	Orchid Valley Potable Water Scheme	Potable water scheme	QG1.4a	AS1	Number water treatment plants: providing full treatment	0	Count
Cairns Regional Council	9307	Orchid Valley	Orchid Valley Potable Water Scheme	Potable water scheme	QG4.18	AS14.1	Number of water main breaks, bursts and leaks	3	Count
Cairns Regional Council	9307	Orchid Valley	Orchid Valley Potable Water Scheme	Potable water scheme	QG1.1	AS2	Length water mains: all	3.7	km
Cairns Regional Council	9307	Orchid Valley	Orchid Valley Potable Water Scheme	Potable water scheme	QG1.4b	AS47	Capacity of water treatment plants	NR	ML/day
Cairns Regional Council	9307	Orchid Valley	Orchid Valley Potable Water Scheme	Potable water scheme	QG1.7	AS48	Total drinking water storage volume	0.09	ML
Cairns Regional Council	9307	Orchid Valley	Orchid Valley Potable Water Scheme	Potable water scheme	QG1.23	AS56	Volume water lost: drinking water	2	ML
Cairns Regional Council	9307	Orchid Valley	Orchid Valley Potable Water Scheme	Potable water scheme	QG4.5	AS8.1	Water main breaks per 100 km main	81.6	per 100 km water main
Cairns Regional Council	9307	Orchid Valley	Orchid Valley Potable Water Scheme	Potable water scheme	QG1.24	CS1.1	Population receiving water services	52	People
Cairns Regional Council	9307	Orchid Valley	Orchid Valley Potable Water Scheme	Potable water scheme	QG4.12	CS10	Water service complaints per 1000 connections	0	per 1000 connections
Cairns Regional Council	9307	Orchid Valley	Orchid Valley Potable Water Scheme	Potable water scheme	QG4.14	CS12	Water and sewerage account complaints per 1000 connections	0	per 1000 connections
Cairns Regional Council	9307	Orchid Valley	Orchid Valley Potable Water Scheme	Potable water scheme	QG4.11	CS13	Water and sewerage complaints (all) per 1000 connections	45.5	per 1000 connections
Cairns Regional Council	9307	Orchid Valley	Orchid Valley Potable Water Scheme	Potable water scheme	QG4.7	CS17	Average number unplanned interruptions: drinking water	1772.7	per 1000 connections
Cairns Regional Council	9307	Orchid Valley	Orchid Valley Potable Water Scheme	Potable water scheme	QG1.13	CS2.1	Connected residential properties: water	21	Connections
Cairns Regional Council	9307	Orchid Valley	Orchid Valley Potable Water Scheme	Potable water scheme	QG4.24	CS20.1	Number drinking water complaints: water quality	1	Count
Cairns Regional Council	9307	Orchid Valley	Orchid Valley Potable Water Scheme	Potable water scheme	QG4.21	CS22.1	Number drinking water complaints: service	0	Count
Cairns Regional Council	9307	Orchid Valley	Orchid Valley Potable Water Scheme	Potable water scheme	QG4.23	CS23.1	Number drinking water and sewerage complaints: accounts	0	Count
Cairns Regional Council	9307	Orchid Valley	Orchid Valley Potable Water Scheme	Potable water scheme	QG1.14	CS3.1	Connected non-residential properties: water	1	Connections
Cairns Regional Council	9307	Orchid Valley	Orchid Valley Potable Water Scheme	Potable water scheme	QG4.20	CS61	Number connections affected by unplanned interruptions	39	Count
Cairns Regional Council	9307	Orchid Valley	Orchid Valley Potable Water Scheme	Potable water scheme	QG4.8a	CS66	% CSS response target met: water incidents	100	%
Cairns Regional Council	9307	Orchid Valley	Orchid Valley Potable Water Scheme	Potable water scheme	QG4.10	CS9	Water quality complaints per 1000 connections	45.5	per 1000 connections
Cairns Regional Council	9307	Orchid Valley	Orchid Valley Potable Water Scheme	Potable water scheme	QG1.8	WA1	Volume water self-sourced: surface water	10.7	ML
Cairns Regional Council	9307	Orchid Valley	Orchid Valley Potable Water Scheme	Potable water scheme	QG1.35	WA124	Volume drinking+non-drinking water used by your organisation	0	ML
Cairns Regional Council	9307	Orchid Valley	Orchid Valley Potable Water Scheme	Potable water scheme	QG1.37	WA197	Volume drinking+non-drinking water returned to surface water	NR	ML
Cairns Regional Council	9307	Orchid Valley	Orchid Valley Potable Water Scheme	Potable water scheme	QG1.9a	WA2	Volume water self-sourced: groundwater	NR	ML
Cairns Regional Council	9307	Orchid Valley	Orchid Valley Potable Water Scheme	Potable water scheme	QG1.5	WA201	Maximum daily demand	0.1	ML/day

organisation	scheme id	scheme	scheme long name	scheme type	KPI code	SWIM code	indicator title	value	units
Cairns Regional Council	9307	Orchid Valley	Orchid Valley Potable Water Scheme	Potable water scheme	QG1.21	WA223	Volume all water imported: internal and external	NR	ML
Cairns Regional Council	9307	Orchid Valley	Orchid Valley Potable Water Scheme	Potable water scheme	QG1.22	WA224	Volume all water exported: internal and external	NR	ML
Cairns Regional Council	9307	Orchid Valley	Orchid Valley Potable Water Scheme	Potable water scheme	QG1.6a	WA225	Volume drinking water produced at a water treatment plant	NR	ML
Cairns Regional Council	9307	Orchid Valley	Orchid Valley Potable Water Scheme	Potable water scheme	QG1.29	WA233	Total volume drinking+non-drinking water exported: external	NR	ML
Cairns Regional Council	9307	Orchid Valley	Orchid Valley Potable Water Scheme	Potable water scheme	QG1.31	WA238	Volume drinking+non-drinking water imported: external (all Suppliers)	NR	ML
Cairns Regional Council	9307	Orchid Valley	Orchid Valley Potable Water Scheme	Potable water scheme	QG1.17a	WA32	Volume drinking water supplied: residential	7.4	ML
Cairns Regional Council	9307	Orchid Valley	Orchid Valley Potable Water Scheme	Potable water scheme	QG1.18a	WA34	Volume drinking water supplied: non-residential	1.3	ML
Cairns Regional Council	9307	Orchid Valley	Orchid Valley Potable Water Scheme	Potable water scheme	QG1.10	WA61	Volume water self-sourced: desalination marine water	NR	ML
Cairns Regional Council	9307	Orchid Valley	Orchid Valley Potable Water Scheme	Potable water scheme	QG1.12	WA7	Volume water sourced: all	10.7	ML
Cairns Regional Council	9307	Orchid Valley	Orchid Valley Potable Water Scheme	Potable water scheme	QG2.10a	WS11	Water restriction duration: PWCM	365	days
Cairns Regional Council	9307	Orchid Valley	Orchid Valley Potable Water Scheme	Potable water scheme	QG2.10b	WS12	Water restriction duration: Level 1	0	days
Cairns Regional Council	9307	Orchid Valley	Orchid Valley Potable Water Scheme	Potable water scheme	QG2.10c	WS13	Water restriction duration: Level 2	0	days
Cairns Regional Council	9307	Orchid Valley	Orchid Valley Potable Water Scheme	Potable water scheme	QG2.10d	WS14	Water restriction duration: Level 3	0	days
Cairns Regional Council	9307	Orchid Valley	Orchid Valley Potable Water Scheme	Potable water scheme	QG2.10e	WS15	Water restriction duration: Level 4	0	days
Cairns Regional Council	9307	Orchid Valley	Orchid Valley Potable Water Scheme	Potable water scheme	QG2.10f	WS16	Water restriction duration: Level 5 (or greater)	0	days
Cairns Regional Council	9307	Orchid Valley	Orchid Valley Potable Water Scheme	Potable water scheme	QG2.11a	WS17	Has asset management planning been undertaken in the last 10 yrs?	yes	yes/no
Cairns Regional Council	9307	Orchid Valley	Orchid Valley Potable Water Scheme	Potable water scheme	QG2.11b	WS18	Has drought management planning been undertaken in the last 10 yrs?	yes	yes/no
Cairns Regional Council	9307	Orchid Valley	Orchid Valley Potable Water Scheme	Potable water scheme	QG2.11c	WS19	Has water demand forecasts been developed or reviewed in the last 5 yrs?	yes	yes/no
Cairns Regional Council	9307	Orchid Valley	Orchid Valley Potable Water Scheme	Potable water scheme	QG2.11d	WS20	Has assessment of key capacity constraints of water infrastructure been undertaken in last 10 yrs?	yes	yes/no
Cairns Regional Council	9307	Orchid Valley	Orchid Valley Potable Water Scheme	Potable water scheme	QG2.11e	WS21	Has the timing for potential future supply augmentation been assessed in the last 10 yrs?	yes	yes/no
Cairns Regional Council	9307	Orchid Valley	Orchid Valley Potable Water Scheme	Potable water scheme	QG2.12	WS22	Months water supply remaining as at 30 June (KPI level): with contingency	6	1,2,3,4,5,6
Cairns Regional Council	9307	Orchid Valley	Orchid Valley Potable Water Scheme	Potable water scheme	QG2.13	WS23	Confidence water demand will be met: next 18 mths	high	high,fair,unsure,low,very low
Cairns Regional Council	9307	Orchid Valley	Orchid Valley Potable Water Scheme	Potable water scheme	QG2.14	WS24	Confidence water demand will be met: next 5 yrs	high	high,fair,unsure,low,very low
Cairns Regional Council	9307	Orchid Valley	Orchid Valley Potable Water Scheme	Potable water scheme	QG2.12a	WS28	Months water supply remaining as at 30 June (KPI level): without contingency	6	1,2,3,4,5,6
Cairns Regional Council	9307	Orchid Valley	Orchid Valley Potable Water Scheme	Potable water scheme	QG2.3	WS3	Available contingency supplies	yes	yes/no

organisation	scheme id	scheme	scheme long name	scheme type	KPI code	SWIM code	indicator title	value	units
Cairns Regional Council	9786	Marlin STP Reuse	Marlin Coast Recycled Water Scheme	Recycled water scheme	QG4.18	AS14.1	Number of water main breaks, bursts and leaks	0	Count
Cairns Regional Council	9786	Marlin STP Reuse	Marlin Coast Recycled Water Scheme	Recycled water scheme	QG1.1	AS2	Length water mains: all	25.8	km
Cairns Regional Council	9786	Marlin STP Reuse	Marlin Coast Recycled Water Scheme	Recycled water scheme	QG4.5	AS8.1	Water main breaks per 100 km main	0	per 100 km water main
Cairns Regional Council	9786	Marlin STP Reuse	Marlin Coast Recycled Water Scheme	Recycled water scheme	QG1.24	CS1.1	Population receiving water services	0	People
Cairns Regional Council	9786	Marlin STP Reuse	Marlin Coast Recycled Water Scheme	Recycled water scheme	QG4.12	CS10	Water service complaints per 1000 connections	0	per 1000 connections
Cairns Regional Council	9786	Marlin STP Reuse	Marlin Coast Recycled Water Scheme	Recycled water scheme	QG4.14	CS12	Water and sewerage account complaints per 1000 connections	0	per 1000 connections
Cairns Regional Council	9786	Marlin STP Reuse	Marlin Coast Recycled Water Scheme	Recycled water scheme	QG4.11	CS13	Water and sewerage complaints (all) per 1000 connections	0	per 1000 connections
Cairns Regional Council	9786	Marlin STP Reuse	Marlin Coast Recycled Water Scheme	Recycled water scheme	QG1.13	CS2.1	Connected residential properties: water	294	Connections
Cairns Regional Council	9786	Marlin STP Reuse	Marlin Coast Recycled Water Scheme	Recycled water scheme	QG1.14	CS3.1	Connected non-residential properties: water	0	Connections
Cairns Regional Council	9786	Marlin STP Reuse	Marlin Coast Recycled Water Scheme	Recycled water scheme	QG1.33	CS75	Connected residential properties: recycled water	294	Connections
Cairns Regional Council	9786	Marlin STP Reuse	Marlin Coast Recycled Water Scheme	Recycled water scheme	QG1.34	CS76	Connected non-residential properties: recycled water	0	Connections
Cairns Regional Council	9786	Marlin STP Reuse	Marlin Coast Recycled Water Scheme	Recycled water scheme	QG4.10	CS9	Water quality complaints per 1000 connections	0	per 1000 connections
Cairns Regional Council	9786	Marlin STP Reuse	Marlin Coast Recycled Water Scheme	Recycled water scheme	QG1.32	WA101	Volume recycled water imported: external	NR	ML
Cairns Regional Council	9786	Marlin STP Reuse	Marlin Coast Recycled Water Scheme	Recycled water scheme	QG1.30	WA15	Volume recycled water exported: external	NR	ML
Cairns Regional Council	9786	Marlin STP Reuse	Marlin Coast Recycled Water Scheme	Recycled water scheme	QG1.36	WA219	Volume recycled water supplied: own use	505.8	ML
Cairns Regional Council	9786	Marlin STP Reuse	Marlin Coast Recycled Water Scheme	Recycled water scheme	QG1.21	WA223	Volume all water imported: internal and external	NR	ML
Cairns Regional Council	9786	Marlin STP Reuse	Marlin Coast Recycled Water Scheme	Recycled water scheme	QG1.22	WA224	Volume all water exported: internal and external	NR	ML
Cairns Regional Council	9786	Marlin STP Reuse	Marlin Coast Recycled Water Scheme	Recycled water scheme	QG1.11	WA26	Volume recycled water supplied: all	720.4	ML
Cairns Regional Council	9786	Marlin STP Reuse	Marlin Coast Recycled Water Scheme	Recycled water scheme	QG1.12	WA7	Volume water sourced: all	0	ML
Cairns Regional Council	9787	Northern STP Reuse	Northern Sewage Recycled Water Scheme	Recycled water scheme	QG4.18	AS14.1	Number of water main breaks, bursts and leaks	0	Count
Cairns Regional Council	9787	Northern STP Reuse	Northern Sewage Recycled Water Scheme	Recycled water scheme	QG1.1	AS2	Length water mains: all	5.1	km
Cairns Regional Council	9787	Northern STP Reuse	Northern Sewage Recycled Water Scheme	Recycled water scheme	QG4.5	AS8.1	Water main breaks per 100 km main	0	per 100 km water main
Cairns Regional Council	9787	Northern STP Reuse	Northern Sewage Recycled Water Scheme	Recycled water scheme	QG1.24	CS1.1	Population receiving water services	0	People
Cairns Regional Council	9787	Northern STP Reuse	Northern Sewage Recycled Water Scheme	Recycled water scheme	QG4.12	CS10	Water service complaints per 1000 connections	0	per 1000 connections
Cairns Regional Council	9787	Northern STP Reuse	Northern Sewage Recycled Water Scheme	Recycled water scheme	QG4.14	CS12	Water and sewerage account complaints per 1000 connections	0	per 1000 connections

organisation	scheme id	scheme	scheme long name	scheme type	KPI code	SWIM code	indicator title	value	units
Cairns Regional Council	9787	Northern STP Reuse	Northern Sewage Recycled Water Scheme	Recycled water scheme	QG4.11	CS13	Water and sewerage complaints (all) per 1000 connections	0	per 1000 connections
Cairns Regional Council	9787	Northern STP Reuse	Northern Sewage Recycled Water Scheme	Recycled water scheme	QG1.13	CS2.1	Connected residential properties: water	0	Connections
Cairns Regional Council	9787	Northern STP Reuse	Northern Sewage Recycled Water Scheme	Recycled water scheme	QG1.14	CS3.1	Connected non-residential properties: water	0	Connections
Cairns Regional Council	9787	Northern STP Reuse	Northern Sewage Recycled Water Scheme	Recycled water scheme	QG1.33	CS75	Connected residential properties: recycled water	0	Connections
Cairns Regional Council	9787	Northern STP Reuse	Northern Sewage Recycled Water Scheme	Recycled water scheme	QG1.34	CS76	Connected non-residential properties: recycled water	0	Connections
Cairns Regional Council	9787	Northern STP Reuse	Northern Sewage Recycled Water Scheme	Recycled water scheme	QG4.10	CS9	Water quality complaints per 1000 connections	0	per 1000 connections
Cairns Regional Council	9787	Northern STP Reuse	Northern Sewage Recycled Water Scheme	Recycled water scheme	QG1.32	WA101	Volume recycled water imported: external	NR	ML
Cairns Regional Council	9787	Northern STP Reuse	Northern Sewage Recycled Water Scheme	Recycled water scheme	QG1.30	WA15	Volume recycled water exported: external	NR	ML
Cairns Regional Council	9787	Northern STP Reuse	Northern Sewage Recycled Water Scheme	Recycled water scheme	QG1.36	WA219	Volume recycled water supplied: own use	673.1	ML
Cairns Regional Council	9787	Northern STP Reuse	Northern Sewage Recycled Water Scheme	Recycled water scheme	QG1.21	WA223	Volume all water imported: internal and external	NR	ML
Cairns Regional Council	9787	Northern STP Reuse	Northern Sewage Recycled Water Scheme	Recycled water scheme	QG1.22	WA224	Volume all water exported: internal and external	NR	ML
Cairns Regional Council	9787	Northern STP Reuse	Northern Sewage Recycled Water Scheme	Recycled water scheme	QG1.11	WA26	Volume recycled water supplied: all	816.2	ML
Cairns Regional Council	9787	Northern STP Reuse	Northern Sewage Recycled Water Scheme	Recycled water scheme	QG1.12	WA7	Volume water sourced: all	0	ML
Cairns Regional Council	9785	Southern STP Reuse	Southern Sewage Recycled Water Scheme	Recycled water scheme	QG4.18	AS14.1	Number of water main breaks, bursts and leaks	0	Count
Cairns Regional Council	9785	Southern STP Reuse	Southern Sewage Recycled Water Scheme	Recycled water scheme	QG1.1	AS2	Length water mains: all	0.8	km
Cairns Regional Council	9785	Southern STP Reuse	Southern Sewage Recycled Water Scheme	Recycled water scheme	QG4.5	AS8.1	Water main breaks per 100 km main	0	per 100 km water main
Cairns Regional Council	9785	Southern STP Reuse	Southern Sewage Recycled Water Scheme	Recycled water scheme	QG1.24	CS1.1	Population receiving water services	0	People
Cairns Regional Council	9785	Southern STP Reuse	Southern Sewage Recycled Water Scheme	Recycled water scheme	QG4.12	CS10	Water service complaints per 1000 connections	0	per 1000 connections
Cairns Regional Council	9785	Southern STP Reuse	Southern Sewage Recycled Water Scheme	Recycled water scheme	QG4.14	CS12	Water and sewerage account complaints per 1000 connections	0	per 1000 connections
Cairns Regional Council	9785	Southern STP Reuse	Southern Sewage Recycled Water Scheme	Recycled water scheme	QG4.11	CS13	Water and sewerage complaints (all) per 1000 connections	0	per 1000 connections
Cairns Regional Council	9785	Southern STP Reuse	Southern Sewage Recycled Water Scheme	Recycled water scheme	QG1.13	CS2.1	Connected residential properties: water	0	Connections
Cairns Regional Council	9785	Southern STP Reuse	Southern Sewage Recycled Water Scheme	Recycled water scheme	QG1.14	CS3.1	Connected non-residential properties: water	0	Connections
Cairns Regional Council	9785	Southern STP Reuse	Southern Sewage Recycled Water Scheme	Recycled water scheme	QG1.33	CS75	Connected residential properties: recycled water	0	Connections
Cairns Regional Council	9785	Southern STP Reuse	Southern Sewage Recycled Water Scheme	Recycled water scheme	QG1.34	CS76	Connected non-residential properties: recycled water	0	Connections
Cairns Regional Council	9785	Southern STP Reuse	Southern Sewage Recycled Water Scheme	Recycled water scheme	QG4.10	CS9	Water quality complaints per 1000 connections	0	per 1000 connections

organisation	scheme id	scheme	scheme long name	scheme type	KPI code	SWIM code	indicator title	value	units
Cairns Regional Council	9785	Southern STP Reuse	Southern Sewage Recycled Water Scheme	Recycled water scheme	QG1.32	WA101	Volume recycled water imported: external	NR	ML
Cairns Regional Council	9785	Southern STP Reuse	Southern Sewage Recycled Water Scheme	Recycled water scheme	QG1.30	WA15	Volume recycled water exported: external	NR	ML
Cairns Regional Council	9785	Southern STP Reuse	Southern Sewage Recycled Water Scheme	Recycled water scheme	QG1.36	WA219	Volume recycled water supplied: own use	435.5	ML
Cairns Regional Council	9785	Southern STP Reuse	Southern Sewage Recycled Water Scheme	Recycled water scheme	QG1.21	WA223	Volume all water imported: internal and external	NR	ML
Cairns Regional Council	9785	Southern STP Reuse	Southern Sewage Recycled Water Scheme	Recycled water scheme	QG1.22	WA224	Volume all water exported: internal and external	NR	ML
Cairns Regional Council	9785	Southern STP Reuse	Southern Sewage Recycled Water Scheme	Recycled water scheme	QG1.11	WA26	Volume recycled water supplied: all	569.6	ML
Cairns Regional Council	9785	Southern STP Reuse	Southern Sewage Recycled Water Scheme	Recycled water scheme	QG1.12	WA7	Volume water sourced: all	0	ML
Cairns Regional Council	9322	Babinda Wastewater Treatment Plant	Babinda Wastewater Treatment Plant	Sewerage scheme	QG4.19	AS38.1	Number sewerage mains breaks/chokes	11	Count
Cairns Regional Council	9322	Babinda Wastewater Treatment Plant	Babinda Wastewater Treatment Plant	Sewerage scheme	QG4.6	AS39.1	Sewerage mains breaks/chokes per 100 km sewer main	54.4	per 100 km sewer mains
Cairns Regional Council	9322	Babinda Wastewater Treatment Plant	Babinda Wastewater Treatment Plant	Sewerage scheme	QG1.3	AS4	Number Sewage Treatment Plants	1	Count
Cairns Regional Council	9322	Babinda Wastewater Treatment Plant	Babinda Wastewater Treatment Plant	Sewerage scheme	QG1.2	AS5	Length sewerage mains and channels	20.2	km
Cairns Regional Council	9322	Babinda Wastewater Treatment Plant	Babinda Wastewater Treatment Plant	Sewerage scheme	QG4.13	CS11	Sewerage service complaints per 1000 connections	0	per 1000 connections
Cairns Regional Council	9322	Babinda Wastewater Treatment Plant	Babinda Wastewater Treatment Plant	Sewerage scheme	QG4.14	CS12	Water and sewerage account complaints per 1000 connections	0	per 1000 connections
Cairns Regional Council	9322	Babinda Wastewater Treatment Plant	Babinda Wastewater Treatment Plant	Sewerage scheme	QG4.11	CS13	Water and sewerage complaints (all) per 1000 connections	0	per 1000 connections
Cairns Regional Council	9322	Babinda Wastewater Treatment Plant	Babinda Wastewater Treatment Plant	Sewerage scheme	QG4.22	CS21	Number sewerage complaints: service	0	Count
Cairns Regional Council	9322	Babinda Wastewater Treatment Plant	Babinda Wastewater Treatment Plant	Sewerage scheme	QG4.23	CS23.1	Number drinking water and sewerage complaints: accounts	0	Count
Cairns Regional Council	9322	Babinda Wastewater Treatment Plant	Babinda Wastewater Treatment Plant	Sewerage scheme	QG1.15	CS6.1	Connected residential properties: sewerage	554	Connections
Cairns Regional Council	9322	Babinda Wastewater Treatment Plant	Babinda Wastewater Treatment Plant	Sewerage scheme	QG4.9a	CS65	% CSS response target met: sewerage incidents	100	%
Cairns Regional Council	9322	Babinda Wastewater Treatment Plant	Babinda Wastewater Treatment Plant	Sewerage scheme	QG1.16	CS7.1	Connected non-residential properties: sewerage	55	Connections
Cairns Regional Council	9322	Babinda Wastewater Treatment Plant	Babinda Wastewater Treatment Plant	Sewerage scheme	QG1.25	EN18	Volume sewage treated: maximum primary level only	0	ML
Cairns Regional Council	9322	Babinda Wastewater Treatment Plant	Babinda Wastewater Treatment Plant	Sewerage scheme	QG1.26	EN19	Volume sewage treated: maximum secondary level only	460.6	ML
Cairns Regional Council	9322	Babinda Wastewater Treatment Plant	Babinda Wastewater Treatment Plant	Sewerage scheme	QG1.27	EN20	Volume sewage treated: tertiary level	0	ML
Cairns Regional Council	9322	Babinda Wastewater Treatment Plant	Babinda Wastewater Treatment Plant	Sewerage scheme	QG1.28	WA18	Volume sewage collected: residential+trade	460.6	ML
Cairns Regional Council	24282	Bramston Beach Wastewater Treatment Plant	Bramston Beach Wastewater Treatment Plant	Sewerage scheme	QG4.19	AS38.1	Number sewerage mains breaks/chokes	NR	Count
Cairns Regional Council	24282	Bramston Beach Wastewater Treatment Plant	Bramston Beach Wastewater Treatment Plant	Sewerage scheme	QG4.6	AS39.1	Sewerage mains breaks/chokes per 100 km sewer main	NR	per 100 km sewer mains

organisation	scheme id	scheme	scheme long name	scheme type	KPI code	SWIM code	indicator title	value	units
Cairns Regional Council	24282	Bramston Beach Wastewater Treatment Plant	Bramston Beach Wastewater Treatment Plant	Sewerage scheme	QG1.3	AS4	Number Sewage Treatment Plants	NR	Count
Cairns Regional Council	24282	Bramston Beach Wastewater Treatment Plant	Bramston Beach Wastewater Treatment Plant	Sewerage scheme	QG1.2	AS5	Length sewerage mains and channels	NR	km
Cairns Regional Council	24282	Bramston Beach Wastewater Treatment Plant	Bramston Beach Wastewater Treatment Plant	Sewerage scheme	QG4.13	CS11	Sewerage service complaints per 1000 connections	NR	per 1000 connections
Cairns Regional Council	24282	Bramston Beach Wastewater Treatment Plant	Bramston Beach Wastewater Treatment Plant	Sewerage scheme	QG4.14	CS12	Water and sewerage account complaints per 1000 connections	NR	per 1000 connections
Cairns Regional Council	24282	Bramston Beach Wastewater Treatment Plant	Bramston Beach Wastewater Treatment Plant	Sewerage scheme	QG4.11	CS13	Water and sewerage complaints (all) per 1000 connections	NR	per 1000 connections
Cairns Regional Council	24282	Bramston Beach Wastewater Treatment Plant	Bramston Beach Wastewater Treatment Plant	Sewerage scheme	QG4.22	CS21	Number sewerage complaints: service	NR	Count
Cairns Regional Council	24282	Bramston Beach Wastewater Treatment Plant	Bramston Beach Wastewater Treatment Plant	Sewerage scheme	QG4.23	CS23.1	Number drinking water and sewerage complaints: accounts	NR	Count
Cairns Regional Council	24282	Bramston Beach Wastewater Treatment Plant	Bramston Beach Wastewater Treatment Plant	Sewerage scheme	QG1.15	CS6.1	Connected residential properties: sewerage	NR	Connections
Cairns Regional Council	24282	Bramston Beach Wastewater Treatment Plant	Bramston Beach Wastewater Treatment Plant	Sewerage scheme	QG4.9a	CS65	% CSS response target met: sewerage incidents	NR	%
Cairns Regional Council	24282	Bramston Beach Wastewater Treatment Plant	Bramston Beach Wastewater Treatment Plant	Sewerage scheme	QG1.16	CS7.1	Connected non-residential properties: sewerage	NR	Connections
Cairns Regional Council	24282	Bramston Beach Wastewater Treatment Plant	Bramston Beach Wastewater Treatment Plant	Sewerage scheme	QG1.25	EN18	Volume sewage treated: maximum primary level only	NR	ML
Cairns Regional Council	24282	Bramston Beach Wastewater Treatment Plant	Bramston Beach Wastewater Treatment Plant	Sewerage scheme	QG1.26	EN19	Volume sewage treated: maximum secondary level only	NR	ML
Cairns Regional Council	24282	Bramston Beach Wastewater Treatment Plant	Bramston Beach Wastewater Treatment Plant	Sewerage scheme	QG1.27	EN20	Volume sewage treated: tertiary level	NR	ML
Cairns Regional Council	24282	Bramston Beach Wastewater Treatment Plant	Bramston Beach Wastewater Treatment Plant	Sewerage scheme	QG1.28	WA18	Volume sewage collected: residential+trade	NR	ML
Cairns Regional Council	9323	Edmonton Wastewater Treatment Plant	Edmonton Wastewater Treatment Plant	Sewerage scheme	QG4.19	AS38.1	Number sewerage mains breaks/chokes	20	Count
Cairns Regional Council	9323	Edmonton Wastewater Treatment Plant	Edmonton Wastewater Treatment Plant	Sewerage scheme	QG4.6	AS39.1	Sewerage mains breaks/chokes per 100 km sewer main	9.2	per 100 km sewer mains
Cairns Regional Council	9323	Edmonton Wastewater Treatment Plant	Edmonton Wastewater Treatment Plant	Sewerage scheme	QG1.3	AS4	Number Sewage Treatment Plants	1	Count
Cairns Regional Council	9323	Edmonton Wastewater Treatment Plant	Edmonton Wastewater Treatment Plant	Sewerage scheme	QG1.2	AS5	Length sewerage mains and channels	217.7	km
Cairns Regional Council	9323	Edmonton Wastewater Treatment Plant	Edmonton Wastewater Treatment Plant	Sewerage scheme	QG4.13	CS11	Sewerage service complaints per 1000 connections	0	per 1000 connections
Cairns Regional Council	9323	Edmonton Wastewater Treatment Plant	Edmonton Wastewater Treatment Plant	Sewerage scheme	QG4.14	CS12	Water and sewerage account complaints per 1000 connections	0	per 1000 connections
Cairns Regional Council	9323	Edmonton Wastewater Treatment Plant	Edmonton Wastewater Treatment Plant	Sewerage scheme	QG4.11	CS13	Water and sewerage complaints (all) per 1000 connections	0	per 1000 connections
Cairns Regional Council	9323	Edmonton Wastewater Treatment Plant	Edmonton Wastewater Treatment Plant	Sewerage scheme	QG4.22	CS21	Number sewerage complaints: service	0	Count
Cairns Regional Council	9323	Edmonton Wastewater Treatment Plant	Edmonton Wastewater Treatment Plant	Sewerage scheme	QG4.23	CS23.1	Number drinking water and sewerage complaints: accounts	0	Count
Cairns Regional Council	9323	Edmonton Wastewater Treatment Plant	Edmonton Wastewater Treatment Plant	Sewerage scheme	QG1.15	CS6.1	Connected residential properties: sewerage	9735	Connections
Cairns Regional Council	9323	Edmonton Wastewater Treatment Plant	Edmonton Wastewater Treatment Plant	Sewerage scheme	QG4.9a	CS65	% CSS response target met: sewerage incidents	100	%

organisation	scheme id	scheme	scheme long name	scheme type	KPI code	SWIM code	indicator title	value	units
Cairns Regional Council	9323	Edmonton Wastewater Treatment Plant	Edmonton Wastewater Treatment Plant	Sewerage scheme	QG1.16	CS7.1	Connected non-residential properties: sewerage	234	Connections
Cairns Regional Council	9323	Edmonton Wastewater Treatment Plant	Edmonton Wastewater Treatment Plant	Sewerage scheme	QG1.25	EN18	Volume sewage treated: maximum primary level only	7.5	ML
Cairns Regional Council	9323	Edmonton Wastewater Treatment Plant	Edmonton Wastewater Treatment Plant	Sewerage scheme	QG1.26	EN19	Volume sewage treated: maximum secondary level only	0	ML
Cairns Regional Council	9323	Edmonton Wastewater Treatment Plant	Edmonton Wastewater Treatment Plant	Sewerage scheme	QG1.27	EN20	Volume sewage treated: tertiary level	2545.9	ML
Cairns Regional Council	9323	Edmonton Wastewater Treatment Plant	Edmonton Wastewater Treatment Plant	Sewerage scheme	QG1.28	WA18	Volume sewage collected: residential+trade	2401.9	ML
Cairns Regional Council	9324	Gordonvale Wastewater Treatment Plant	Gordonvale Wastewater Treatment Plant	Sewerage scheme	QG4.19	AS38.1	Number sewerage mains breaks/chokes	18	Count
Cairns Regional Council	9324	Gordonvale Wastewater Treatment Plant	Gordonvale Wastewater Treatment Plant	Sewerage scheme	QG4.6	AS39.1	Sewerage mains breaks/chokes per 100 km sewer main	26.3	per 100 km sewer mains
Cairns Regional Council	9324	Gordonvale Wastewater Treatment Plant	Gordonvale Wastewater Treatment Plant	Sewerage scheme	QG1.3	AS4	Number Sewage Treatment Plants	1	Count
Cairns Regional Council	9324	Gordonvale Wastewater Treatment Plant	Gordonvale Wastewater Treatment Plant	Sewerage scheme	QG1.2	AS5	Length sewerage mains and channels	68.3	km
Cairns Regional Council	9324	Gordonvale Wastewater Treatment Plant	Gordonvale Wastewater Treatment Plant	Sewerage scheme	QG4.13	CS11	Sewerage service complaints per 1000 connections	0	per 1000 connections
Cairns Regional Council	9324	Gordonvale Wastewater Treatment Plant	Gordonvale Wastewater Treatment Plant	Sewerage scheme	QG4.14	CS12	Water and sewerage account complaints per 1000 connections	0	per 1000 connections
Cairns Regional Council	9324	Gordonvale Wastewater Treatment Plant	Gordonvale Wastewater Treatment Plant	Sewerage scheme	QG4.11	CS13	Water and sewerage complaints (all) per 1000 connections	0	per 1000 connections
Cairns Regional Council	9324	Gordonvale Wastewater Treatment Plant	Gordonvale Wastewater Treatment Plant	Sewerage scheme	QG4.22	CS21	Number sewerage complaints: service	0	Count
Cairns Regional Council	9324	Gordonvale Wastewater Treatment Plant	Gordonvale Wastewater Treatment Plant	Sewerage scheme	QG4.23	CS23.1	Number drinking water and sewerage complaints: accounts	0	Count
Cairns Regional Council	9324	Gordonvale Wastewater Treatment Plant	Gordonvale Wastewater Treatment Plant	Sewerage scheme	QG1.15	CS6.1	Connected residential properties: sewerage	2864	Connections
Cairns Regional Council	9324	Gordonvale Wastewater Treatment Plant	Gordonvale Wastewater Treatment Plant	Sewerage scheme	QG4.9a	CS65	% CSS response target met: sewerage incidents	100	%
Cairns Regional Council	9324	Gordonvale Wastewater Treatment Plant	Gordonvale Wastewater Treatment Plant	Sewerage scheme	QG1.16	CS7.1	Connected non-residential properties: sewerage	94	Connections
Cairns Regional Council	9324	Gordonvale Wastewater Treatment Plant	Gordonvale Wastewater Treatment Plant	Sewerage scheme	QG1.25	EN18	Volume sewage treated: maximum primary level only	150.2	ML
Cairns Regional Council	9324	Gordonvale Wastewater Treatment Plant	Gordonvale Wastewater Treatment Plant	Sewerage scheme	QG1.26	EN19	Volume sewage treated: maximum secondary level only	0	ML
Cairns Regional Council	9324	Gordonvale Wastewater Treatment Plant	Gordonvale Wastewater Treatment Plant	Sewerage scheme	QG1.27	EN20	Volume sewage treated: tertiary level	1057	ML
Cairns Regional Council	9324	Gordonvale Wastewater Treatment Plant	Gordonvale Wastewater Treatment Plant	Sewerage scheme	QG1.28	WA18	Volume sewage collected: residential+trade	1149.5	ML
Cairns Regional Council	9326	Marlin Coast Wastewater Treatment Plant	Marlin Coast Wastewater Treatment Plant	Sewerage scheme	QG4.19	AS38.1	Number sewerage mains breaks/chokes	41	Count
Cairns Regional Council	9326	Marlin Coast Wastewater Treatment Plant	Marlin Coast Wastewater Treatment Plant	Sewerage scheme	QG4.6	AS39.1	Sewerage mains breaks/chokes per 100 km sewer main	13.2	per 100 km sewer mains
Cairns Regional Council	9326	Marlin Coast Wastewater Treatment Plant	Marlin Coast Wastewater Treatment Plant	Sewerage scheme	QG1.3	AS4	Number Sewage Treatment Plants	1	Count
Cairns Regional Council	9326	Marlin Coast Wastewater Treatment Plant	Marlin Coast Wastewater Treatment Plant	Sewerage scheme	QG1.2	AS5	Length sewerage mains and channels	309.9	km

organisation	scheme id	scheme	scheme long name	scheme type	KPI code	SWIM code	indicator title	value	units
Cairns Regional Council	9326	Marlin Coast Wastewater Treatment Plant	Marlin Coast Wastewater Treatment Plant	Sewerage scheme	QG4.13	CS11	Sewerage service complaints per 1000 connections	0	per 1000 connections
Cairns Regional Council	9326	Marlin Coast Wastewater Treatment Plant	Marlin Coast Wastewater Treatment Plant	Sewerage scheme	QG4.14	CS12	Water and sewerage account complaints per 1000 connections	0	per 1000 connections
Cairns Regional Council	9326	Marlin Coast Wastewater Treatment Plant	Marlin Coast Wastewater Treatment Plant	Sewerage scheme	QG4.11	CS13	Water and sewerage complaints (all) per 1000 connections	0	per 1000 connections
Cairns Regional Council	9326	Marlin Coast Wastewater Treatment Plant	Marlin Coast Wastewater Treatment Plant	Sewerage scheme	QG4.22	CS21	Number sewerage complaints: service	0	Count
Cairns Regional Council	9326	Marlin Coast Wastewater Treatment Plant	Marlin Coast Wastewater Treatment Plant	Sewerage scheme	QG4.23	CS23.1	Number drinking water and sewerage complaints: accounts	0	Count
Cairns Regional Council	9326	Marlin Coast Wastewater Treatment Plant	Marlin Coast Wastewater Treatment Plant	Sewerage scheme	QG1.15	CS6.1	Connected residential properties: sewerage	17482	Connections
Cairns Regional Council	9326	Marlin Coast Wastewater Treatment Plant	Marlin Coast Wastewater Treatment Plant	Sewerage scheme	QG4.9a	CS65	% CSS response target met: sewerage incidents	100	%
Cairns Regional Council	9326	Marlin Coast Wastewater Treatment Plant	Marlin Coast Wastewater Treatment Plant	Sewerage scheme	QG1.16	CS7.1	Connected non-residential properties: sewerage	286	Connections
Cairns Regional Council	9326	Marlin Coast Wastewater Treatment Plant	Marlin Coast Wastewater Treatment Plant	Sewerage scheme	QG1.25	EN18	Volume sewage treated: maximum primary level only	4.9	ML
Cairns Regional Council	9326	Marlin Coast Wastewater Treatment Plant	Marlin Coast Wastewater Treatment Plant	Sewerage scheme	QG1.26	EN19	Volume sewage treated: maximum secondary level only	0	ML
Cairns Regional Council	9326	Marlin Coast Wastewater Treatment Plant	Marlin Coast Wastewater Treatment Plant	Sewerage scheme	QG1.27	EN20	Volume sewage treated: tertiary level	2980.1	ML
Cairns Regional Council	9326	Marlin Coast Wastewater Treatment Plant	Marlin Coast Wastewater Treatment Plant	Sewerage scheme	QG1.28	WA18	Volume sewage collected: residential+trade	3194.8	ML
Cairns Regional Council	9327	Northern Wastewater Treatment Plant	Northern Wastewater Treatment Plant	Sewerage scheme	QG4.19	AS38.1	Number sewerage mains breaks/chokes	139	Count
Cairns Regional Council	9327	Northern Wastewater Treatment Plant	Northern Wastewater Treatment Plant	Sewerage scheme	QG4.6	AS39.1	Sewerage mains breaks/chokes per 100 km sewer main	37.1	per 100 km sewer mains
Cairns Regional Council	9327	Northern Wastewater Treatment Plant	Northern Wastewater Treatment Plant	Sewerage scheme	QG1.3	AS4	Number Sewage Treatment Plants	1	Count
Cairns Regional Council	9327	Northern Wastewater Treatment Plant	Northern Wastewater Treatment Plant	Sewerage scheme	QG1.2	AS5	Length sewerage mains and channels	374.9	km
Cairns Regional Council	9327	Northern Wastewater Treatment Plant	Northern Wastewater Treatment Plant	Sewerage scheme	QG4.13	CS11	Sewerage service complaints per 1000 connections	0	per 1000 connections
Cairns Regional Council	9327	Northern Wastewater Treatment Plant	Northern Wastewater Treatment Plant	Sewerage scheme	QG4.14	CS12	Water and sewerage account complaints per 1000 connections	0	per 1000 connections
Cairns Regional Council	9327	Northern Wastewater Treatment Plant	Northern Wastewater Treatment Plant	Sewerage scheme	QG4.11	CS13	Water and sewerage complaints (all) per 1000 connections	0	per 1000 connections
Cairns Regional Council	9327	Northern Wastewater Treatment Plant	Northern Wastewater Treatment Plant	Sewerage scheme	QG4.22	CS21	Number sewerage complaints: service	0	Count
Cairns Regional Council	9327	Northern Wastewater Treatment Plant	Northern Wastewater Treatment Plant	Sewerage scheme	QG4.23	CS23.1	Number drinking water and sewerage complaints: accounts	0	Count
Cairns Regional Council	9327	Northern Wastewater Treatment Plant	Northern Wastewater Treatment Plant	Sewerage scheme	QG1.15	CS6.1	Connected residential properties: sewerage	20989	Connections
Cairns Regional Council	9327	Northern Wastewater Treatment Plant	Northern Wastewater Treatment Plant	Sewerage scheme	QG4.9a	CS65	% CSS response target met: sewerage incidents	100	%
Cairns Regional Council	9327	Northern Wastewater Treatment Plant	Northern Wastewater Treatment Plant	Sewerage scheme	QG1.16	CS7.1	Connected non-residential properties: sewerage	1286	Connections
Cairns Regional Council	9327	Northern Wastewater Treatment Plant	Northern Wastewater Treatment Plant	Sewerage scheme	QG1.25	EN18	Volume sewage treated: maximum primary level only	6.8	ML

organisation	scheme id	scheme	scheme long name	scheme type	KPI code	SWIM code	indicator title	value	units
Cairns Regional Council	9327	Northern Wastewater Treatment Plant	Northern Wastewater Treatment Plant	Sewerage scheme	QG1.26	EN19	Volume sewage treated: maximum secondary level only	0	ML
Cairns Regional Council	9327	Northern Wastewater Treatment Plant	Northern Wastewater Treatment Plant	Sewerage scheme	QG1.27	EN20	Volume sewage treated: tertiary level	8113.5	ML
Cairns Regional Council	9327	Northern Wastewater Treatment Plant	Northern Wastewater Treatment Plant	Sewerage scheme	QG1.28	WA18	Volume sewage collected: residential+trade	6503.2	ML
Cairns Regional Council	9325	Southern Wastewater Treatment Plant	Southern Wastewater Treatment Plant	Sewerage scheme	QG4.19	AS38.1	Number sewerage mains breaks/chokes	47	Count
Cairns Regional Council	9325	Southern Wastewater Treatment Plant	Southern Wastewater Treatment Plant	Sewerage scheme	QG4.6	AS39.1	Sewerage mains breaks/chokes per 100 km sewer main	12.4	per 100 km sewer mains
Cairns Regional Council	9325	Southern Wastewater Treatment Plant	Southern Wastewater Treatment Plant	Sewerage scheme	QG1.3	AS4	Number Sewage Treatment Plants	1	Count
Cairns Regional Council	9325	Southern Wastewater Treatment Plant	Southern Wastewater Treatment Plant	Sewerage scheme	QG1.2	AS5	Length sewerage mains and channels	379.8	km
Cairns Regional Council	9325	Southern Wastewater Treatment Plant	Southern Wastewater Treatment Plant	Sewerage scheme	QG4.13	CS11	Sewerage service complaints per 1000 connections	0	per 1000 connections
Cairns Regional Council	9325	Southern Wastewater Treatment Plant	Southern Wastewater Treatment Plant	Sewerage scheme	QG4.14	CS12	Water and sewerage account complaints per 1000 connections	0	per 1000 connections
Cairns Regional Council	9325	Southern Wastewater Treatment Plant	Southern Wastewater Treatment Plant	Sewerage scheme	QG4.11	CS13	Water and sewerage complaints (all) per 1000 connections	0	per 1000 connections
Cairns Regional Council	9325	Southern Wastewater Treatment Plant	Southern Wastewater Treatment Plant	Sewerage scheme	QG4.22	CS21	Number sewerage complaints: service	0	Count
Cairns Regional Council	9325	Southern Wastewater Treatment Plant	Southern Wastewater Treatment Plant	Sewerage scheme	QG4.23	CS23.1	Number drinking water and sewerage complaints: accounts	0	Count
Cairns Regional Council	9325	Southern Wastewater Treatment Plant	Southern Wastewater Treatment Plant	Sewerage scheme	QG1.15	CS6.1	Connected residential properties: sewerage	21961	Connections
Cairns Regional Council	9325	Southern Wastewater Treatment Plant	Southern Wastewater Treatment Plant	Sewerage scheme	QG4.9a	CS65	% CSS response target met: sewerage incidents	100	%
Cairns Regional Council	9325	Southern Wastewater Treatment Plant	Southern Wastewater Treatment Plant	Sewerage scheme	QG1.16	CS7.1	Connected non-residential properties: sewerage	1572	Connections
Cairns Regional Council	9325	Southern Wastewater Treatment Plant	Southern Wastewater Treatment Plant	Sewerage scheme	QG1.25	EN18	Volume sewage treated: maximum primary level only	305.1	ML
Cairns Regional Council	9325	Southern Wastewater Treatment Plant	Southern Wastewater Treatment Plant	Sewerage scheme	QG1.26	EN19	Volume sewage treated: maximum secondary level only	0	ML
Cairns Regional Council	9325	Southern Wastewater Treatment Plant	Southern Wastewater Treatment Plant	Sewerage scheme	QG1.27	EN20	Volume sewage treated: tertiary level	9668.2	ML
Cairns Regional Council	9325	Southern Wastewater Treatment Plant	Southern Wastewater Treatment Plant	Sewerage scheme	QG1.28	WA18	Volume sewage collected: residential+trade	9196.3	ML
Cairns Regional Council	1327	Cairns RC WSP-wide	Cairns Regional Council WSP-wide	WSP	QG1.4a	AS1	Number water treatment plants: providing full treatment	1	Count
Cairns Regional Council	1327	Cairns RC WSP-wide	Cairns Regional Council WSP-wide	WSP	QG4.18	AS14.1	Number of water main breaks, bursts and leaks	527	Count
Cairns Regional Council	1327	Cairns RC WSP-wide	Cairns Regional Council WSP-wide	WSP	QG1.1	AS2	Length water mains: all	2348.6	km
Cairns Regional Council	1327	Cairns RC WSP-wide	Cairns Regional Council WSP-wide	WSP	QG4.19	AS38.1	Number sewerage mains breaks/chokes	276	Count
Cairns Regional Council	1327	Cairns RC WSP-wide	Cairns Regional Council WSP-wide	WSP	QG4.6	AS39.1	Sewerage mains breaks/chokes per 100 km sewer main	20.1	per 100 km sewer mains
Cairns Regional Council	1327	Cairns RC WSP-wide	Cairns Regional Council WSP-wide	WSP	QG1.3	AS4	Number Sewage Treatment Plants	6	Count

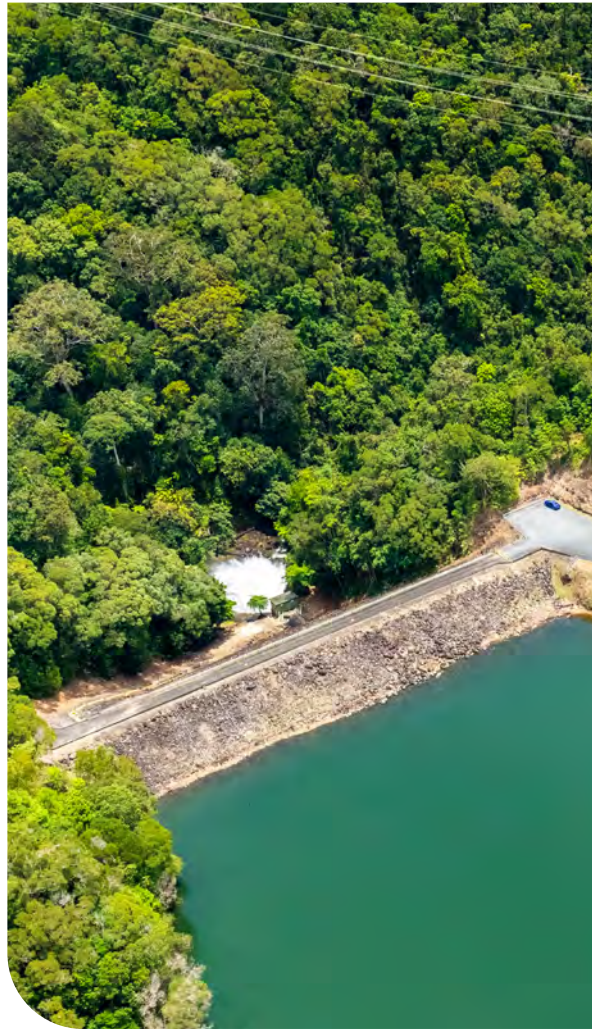
organisation	scheme id	scheme	scheme long name	scheme type	KPI code	SWIM code	indicator title	value	units
Cairns Regional Council	1327	Cairns RC WSP-wide	Cairns Regional Council WSP-wide	WSP	QG1.4b	AS47	Capacity of water treatment plants	104	ML/day
Cairns Regional Council	1327	Cairns RC WSP-wide	Cairns Regional Council WSP-wide	WSP	QG1.7	AS48	Total drinking water storage volume	331.44	ML
Cairns Regional Council	1327	Cairns RC WSP-wide	Cairns Regional Council WSP-wide	WSP	QG1.2	AS5	Length sewerage mains and channels	1370.8	km
Cairns Regional Council	1327	Cairns RC WSP-wide	Cairns Regional Council WSP-wide	WSP	QG1.23	AS56	Volume water lost: drinking water	3140.2	ML
Cairns Regional Council	1327	Cairns RC WSP-wide	Cairns Regional Council WSP-wide	WSP	QG4.5	AS8.1	Water main breaks per 100 km main	22.4	per 100 km water main
Cairns Regional Council	1327	Cairns RC WSP-wide	Cairns Regional Council WSP-wide	WSP	QG1.24	CS1.1	Population receiving water services	178104	People
Cairns Regional Council	1327	Cairns RC WSP-wide	Cairns Regional Council WSP-wide	WSP	QG4.12	CS10	Water service complaints per 1000 connections	0	per 1000 connections
Cairns Regional Council	1327	Cairns RC WSP-wide	Cairns Regional Council WSP-wide	WSP	QG4.13	CS11	Sewerage service complaints per 1000 connections	0	per 1000 connections
Cairns Regional Council	1327	Cairns RC WSP-wide	Cairns Regional Council WSP-wide	WSP	QG4.14	CS12	Water and sewerage account complaints per 1000 connections	0	per 1000 connections
Cairns Regional Council	1327	Cairns RC WSP-wide	Cairns Regional Council WSP-wide	WSP	QG4.11	CS13	Water and sewerage complaints (all) per 1000 connections	0.1	per 1000 connections
Cairns Regional Council	1327	Cairns RC WSP-wide	Cairns Regional Council WSP-wide	WSP	QG4.7	CS17	Average number unplanned interruptions: drinking water	157.6	per 1000 connections
Cairns Regional Council	1327	Cairns RC WSP-wide	Cairns Regional Council WSP-wide	WSP	QG1.13	CS2.1	Connected residential properties: water	72168	Connections
Cairns Regional Council	1327	Cairns RC WSP-wide	Cairns Regional Council WSP-wide	WSP	QG4.24	CS20.1	Number drinking water complaints: water quality	358	Count
Cairns Regional Council	1327	Cairns RC WSP-wide	Cairns Regional Council WSP-wide	WSP	QG4.22	CS21	Number sewerage complaints: service	0	Count
Cairns Regional Council	1327	Cairns RC WSP-wide	Cairns Regional Council WSP-wide	WSP	QG4.21	CS22.1	Number drinking water complaints: service	3	Count
Cairns Regional Council	1327	Cairns RC WSP-wide	Cairns Regional Council WSP-wide	WSP	QG4.23	CS23.1	Number drinking water and sewerage complaints: accounts	3	Count
Cairns Regional Council	1327	Cairns RC WSP-wide	Cairns Regional Council WSP-wide	WSP	QG1.14	CS3.1	Connected non-residential properties: water	4592	Connections
Cairns Regional Council	1327	Cairns RC WSP-wide	Cairns Regional Council WSP-wide	WSP	QG1.15	CS6.1	Connected residential properties: sewerage	73585	Connections
Cairns Regional Council	1327	Cairns RC WSP-wide	Cairns Regional Council WSP-wide	WSP	QG4.20	CS61	Number connections affected by unplanned interruptions	12095	Count
Cairns Regional Council	1327	Cairns RC WSP-wide	Cairns Regional Council WSP-wide	WSP	QG4.9a	CS65	% CSS response target met: sewerage incidents	100	%
Cairns Regional Council	1327	Cairns RC WSP-wide	Cairns Regional Council WSP-wide	WSP	QG4.8a	CS66	% CSS response target met: water incidents	77	%
Cairns Regional Council	1327	Cairns RC WSP-wide	Cairns Regional Council WSP-wide	WSP	QG1.16	CS7.1	Connected non-residential properties: sewerage	3527	Connections
Cairns Regional Council	1327	Cairns RC WSP-wide	Cairns Regional Council WSP-wide	WSP	QG1.33	CS75	Connected residential properties: recycled water	294	Connections
Cairns Regional Council	1327	Cairns RC WSP-wide	Cairns Regional Council WSP-wide	WSP	QG1.34	CS76	Connected non-residential properties: recycled water	0	Connections
Cairns Regional Council	1327	Cairns RC WSP-wide	Cairns Regional Council WSP-wide	WSP	QG4.10	CS9	Water quality complaints per 1000 connections	4.7	per 1000 connections

organisation	scheme id	scheme	scheme long name	scheme type	KPI code	SWIM code	indicator title	value	units
Cairns Regional Council	1327	Cairns RC WSP-wide	Cairns Regional Council WSP-wide	WSP	QG1.25	EN18	Volume sewage treated: maximum primary level only	474.5	ML
Cairns Regional Council	1327	Cairns RC WSP-wide	Cairns Regional Council WSP-wide	WSP	QG1.26	EN19	Volume sewage treated: maximum secondary level only	460.6	ML
Cairns Regional Council	1327	Cairns RC WSP-wide	Cairns Regional Council WSP-wide	WSP	QG1.27	EN20	Volume sewage treated: tertiary level	24364.7	ML
Cairns Regional Council	1327	Cairns RC WSP-wide	Cairns Regional Council WSP-wide	WSP	QG3.9	FN1	Revenue: all (NPR) water	223319.47	\$,000
Cairns Regional Council	1327	Cairns RC WSP-wide	Cairns Regional Council WSP-wide	WSP	QG3.6	FN10	Nominal written down replacement cost: fixed sewerage assets	870498.95	\$,000
Cairns Regional Council	1327	Cairns RC WSP-wide	Cairns Regional Council WSP-wide	WSP	QG3.23	FN101	Annual capital renewal expenditure: water supply	26328.69	\$,000
Cairns Regional Council	1327	Cairns RC WSP-wide	Cairns Regional Council WSP-wide	WSP	QG3.24	FN102	Annual capital renewal expenditure: sewerage	20655	\$,000
Cairns Regional Council	1327	Cairns RC WSP-wide	Cairns Regional Council WSP-wide	WSP	QG3.1	FN14	Capital expenditure: water supply	151546	\$,000
Cairns Regional Council	1327	Cairns RC WSP-wide	Cairns Regional Council WSP-wide	WSP	QG3.2	FN15	Capital expenditure: sewerage	20655	\$,000
Cairns Regional Council	1327	Cairns RC WSP-wide	Cairns Regional Council WSP-wide	WSP	QG3.10	FN2	Revenue: all (NPR) sewerage	99491.3	\$,000
Cairns Regional Council	1327	Cairns RC WSP-wide	Cairns Regional Council WSP-wide	WSP	QG3.3	FN26	Capital works grants: water	142520.9	\$,000
Cairns Regional Council	1327	Cairns RC WSP-wide	Cairns Regional Council WSP-wide	WSP	QG3.4	FN27	Capital works grants: sewerage	0	\$,000
Cairns Regional Council	1327	Cairns RC WSP-wide	Cairns Regional Council WSP-wide	WSP	QG3.11a	FN32	Costs: operating water (incl. purchase water)	24269.04	\$,000
Cairns Regional Council	1327	Cairns RC WSP-wide	Cairns Regional Council WSP-wide	WSP	QG3.12a	FN33	Costs: operating sewerage (incl. bulk wastewater payment)	31836.59	\$,000
Cairns Regional Council	1327	Cairns RC WSP-wide	Cairns Regional Council WSP-wide	WSP	QG3.25	FN44	Costs: purchase bulk drinking+non-drinking water	NR	\$,000
Cairns Regional Council	1327	Cairns RC WSP-wide	Cairns Regional Council WSP-wide	WSP	QG3.26	FN45	Costs: purchase bulk recycled water	NR	\$,000
Cairns Regional Council	1327	Cairns RC WSP-wide	Cairns Regional Council WSP-wide	WSP	QG3.21	FN49	Costs: any other water	1818.35	\$,000
Cairns Regional Council	1327	Cairns RC WSP-wide	Cairns Regional Council WSP-wide	WSP	QG3.22	FN50	Costs: any other sewerage	749.3	\$,000
Cairns Regional Council	1327	Cairns RC WSP-wide	Cairns Regional Council WSP-wide	WSP	QG3.7	FN74	Current replacement costs: fixed water assets	1508988.84	\$,000
Cairns Regional Council	1327	Cairns RC WSP-wide	Cairns Regional Council WSP-wide	WSP	QG3.8	FN75	Current replacement costs: fixed sewerage assets	1416208.59	\$,000
Cairns Regional Council	1327	Cairns RC WSP-wide	Cairns Regional Council WSP-wide	WSP	QG3.13	FN76	Costs: maintenance water	12489.85	\$,000
Cairns Regional Council	1327	Cairns RC WSP-wide	Cairns Regional Council WSP-wide	WSP	QG3.14	FN77	Costs: maintenance sewerage	8357.79	\$,000
Cairns Regional Council	1327	Cairns RC WSP-wide	Cairns Regional Council WSP-wide	WSP	QG3.15	FN78	Current cost depreciation: water	21119.99	\$,000
Cairns Regional Council	1327	Cairns RC WSP-wide	Cairns Regional Council WSP-wide	WSP	QG3.16	FN79	Current cost depreciation: sewerage	24686.83	\$,000
Cairns Regional Council	1327	Cairns RC WSP-wide	Cairns Regional Council WSP-wide	WSP	QG3.19	FN82	Forecast 5 year average annual renewals expenditure: water	39841.34	\$,000

organisation	scheme id	scheme	scheme long name	scheme type	KPI code	SWIM code	indicator title	value	units
Cairns Regional Council	1327	Cairns RC WSP-wide	Cairns Regional Council WSP-wide	WSP	QG3.20	FN83	Forecast 5 year average annual renewals expenditure: sewerage	46242.48	\$,000
Cairns Regional Council	1327	Cairns RC WSP-wide	Cairns Regional Council WSP-wide	WSP	QG5.1	FN84	Operating ratio	36	%
Cairns Regional Council	1327	Cairns RC WSP-wide	Cairns Regional Council WSP-wide	WSP	QG5.2	FN85	Capital replenishment ratio	4.8	Count
Cairns Regional Council	1327	Cairns RC WSP-wide	Cairns Regional Council WSP-wide	WSP	QG5.3	FN86	Debt to revenue ratio	0	%
Cairns Regional Council	1327	Cairns RC WSP-wide	Cairns Regional Council WSP-wide	WSP	QG3.5	FN9	Nominal written down replacement cost: fixed water assets	708423.34	\$,000
Cairns Regional Council	1327	Cairns RC WSP-wide	Cairns Regional Council WSP-wide	WSP	QG4.3	PR47	Annual residential bill based on 200kL/a: drinking water+sewerage	1672.98	\$
Cairns Regional Council	1327	Cairns RC WSP-wide	Cairns Regional Council WSP-wide	WSP	QG4.4	PR48	Typical residential bill: drinking water+sewerage	1758.42	\$
Cairns Regional Council	1327	Cairns RC WSP-wide	Cairns Regional Council WSP-wide	WSP	QG4.15	PR55	Residential drinking water supply tariff data	('Tariff Type', Residential - Annual access charge for each barrack, residence, flat, strata title unit and vacant allotment, plus a per KL tariff for consumption.Residential - Annual access charge for each barrack, dwelling house, strata title unit or multi-unit dwelling and vacant allotment, plus a per KL tariff for consumption., Annual access charge): ('Fixed Charge', 384.12): ('Step 1 Charge', 1.7): ('Step 1 Boundary', NR): ('Step 2 Charge', NR): ('Step 2 Boundary', NR): ('Step 3 Charge', NR): ('Step 3 Boundary', NR): ('Step 4 Charge', NR): ('Step 4 Boundary', NR): ('Step 5 Charge', NR): ('Step 5 Boundary', NR): ('Step 6 Charge', NR): ('Step 6 Boundary', NR): ('Special Levy Charge', NR): ('Special Levy Retained', NR)	Text
Cairns Regional Council	1327	Cairns RC WSP-wide	Cairns Regional Council WSP-wide	WSP	QG4.17	PR65	Residential recycled water supply tariff data	('Tariff Type', NR): ('Fixed Charge', NR, NR): ('Step 1 Charge', NR): ('Step 1 Boundary', NR): ('Step 2 Charge', NR): ('Step 2 Boundary', NR): ('Special Levy Charge', NR): ('Special Levy Retained', NR)	Text
Cairns Regional Council	1327	Cairns RC WSP-wide	Cairns Regional Council WSP-wide	WSP	QG4.16	PR66	Residential sewerage services tariff data	('Tariff Type', Commercial - As residential except charge is per pedestal or 3 urinals): ('Fixed Charge', 948.86, per residential assessment): ('Step 1 Charge', NR): ('Special Levy Charge', NR): ('Special Levy Retained', no)	Text
Cairns Regional Council	1327	Cairns RC WSP-wide	Cairns Regional Council WSP-wide	WSP	QG1.8	WA1	Volume water self-sourced: surface water	29101.6	ML
Cairns Regional Council	1327	Cairns RC WSP-wide	Cairns Regional Council WSP-wide	WSP	QG1.32	WA101	Volume recycled water imported: external	NR	ML
Cairns Regional Council	1327	Cairns RC WSP-wide	Cairns Regional Council WSP-wide	WSP	QG1.35	WA124	Volume drinking+non-drinking water used by your organisation	1123.8	ML
Cairns Regional Council	1327	Cairns RC WSP-wide	Cairns Regional Council WSP-wide	WSP	QG1.30	WA15	Volume recycled water exported: external	NR	ML
Cairns Regional Council	1327	Cairns RC WSP-wide	Cairns Regional Council WSP-wide	WSP	QG1.28	WA18	Volume sewage collected: residential+trade	22906.3	ML
Cairns Regional Council	1327	Cairns RC WSP-wide	Cairns Regional Council WSP-wide	WSP	QG1.37	WA197	Volume drinking+non-drinking water returned to surface water	NR	ML

organisation	scheme id	scheme	scheme long name	scheme type	KPI code	SWIM code	indicator title	value	units
Cairns Regional Council	1327	Cairns RC WSP-wide	Cairns Regional Council WSP-wide	WSP	QG1.9a	WA2	Volume water self-sourced: groundwater	NR	ML
Cairns Regional Council	1327	Cairns RC WSP-wide	Cairns Regional Council WSP-wide	WSP	QG1.5	WA201	Maximum daily demand	110.3	ML/day
Cairns Regional Council	1327	Cairns RC WSP-wide	Cairns Regional Council WSP-wide	WSP	QG1.36	WA219	Volume recycled water supplied: own use	1614.4	ML
Cairns Regional Council	1327	Cairns RC WSP-wide	Cairns Regional Council WSP-wide	WSP	QG1.21	WA223	Volume all water imported: internal and external	12	ML
Cairns Regional Council	1327	Cairns RC WSP-wide	Cairns Regional Council WSP-wide	WSP	QG1.22	WA224	Volume all water exported: internal and external	12	ML
Cairns Regional Council	1327	Cairns RC WSP-wide	Cairns Regional Council WSP-wide	WSP	QG1.6a	WA225	Volume drinking water produced at a water treatment plant	27203.6	ML
Cairns Regional Council	1327	Cairns RC WSP-wide	Cairns Regional Council WSP-wide	WSP	QG1.29	WA233	Total volume drinking+non-drinking water exported: external	NR	ML
Cairns Regional Council	1327	Cairns RC WSP-wide	Cairns Regional Council WSP-wide	WSP	QG1.31	WA238	Volume drinking+non-drinking water imported: external (all Suppliers)	NR	ML
Cairns Regional Council	1327	Cairns RC WSP-wide	Cairns Regional Council WSP-wide	WSP	QG1.11	WA26	Volume recycled water supplied: all	2106.2	ML
Cairns Regional Council	1327	Cairns RC WSP-wide	Cairns Regional Council WSP-wide	WSP	QG1.17a	WA32	Volume drinking water supplied: residential	18061	ML
Cairns Regional Council	1327	Cairns RC WSP-wide	Cairns Regional Council WSP-wide	WSP	QG1.18a	WA34	Volume drinking water supplied: non-residential	6482	ML
Cairns Regional Council	1327	Cairns RC WSP-wide	Cairns Regional Council WSP-wide	WSP	QG1.10	WA61	Volume water self-sourced: desalination marine water	NR	ML
Cairns Regional Council	1327	Cairns RC WSP-wide	Cairns Regional Council WSP-wide	WSP	QG1.12	WA7	Volume water sourced: all	29101.6	ML
Cairns Regional Council	1327	Cairns RC WSP-wide	Cairns Regional Council WSP-wide	WSP	QG1.17b	WA91	Volume non-drinking water supplied: residential	NR	ML
Cairns Regional Council	1327	Cairns RC WSP-wide	Cairns Regional Council WSP-wide	WSP	QG1.18b	WA92	Volume non-drinking water supplied: non-residential	NR	ML
Cairns Regional Council	1327	Cairns RC WSP-wide	Cairns Regional Council WSP-wide	WSP	QG1.20	WF1	Total full-time equivalent water+sewerage employees	291	FTEs
Cairns Regional Council	1327	Cairns RC WSP-wide	Cairns Regional Council WSP-wide	WSP	QG1.20a	WF2	Total full-time equivalent water+sewerage operators	30	FTEs
Cairns Regional Council	1327	Cairns RC WSP-wide	Cairns Regional Council WSP-wide	WSP	QG2.10a	WS11	Water restriction duration: PWCM	366	days
Cairns Regional Council	1327	Cairns RC WSP-wide	Cairns Regional Council WSP-wide	WSP	QG2.10b	WS12	Water restriction duration: Level 1	0	days
Cairns Regional Council	1327	Cairns RC WSP-wide	Cairns Regional Council WSP-wide	WSP	QG2.10c	WS13	Water restriction duration: Level 2	0	days
Cairns Regional Council	1327	Cairns RC WSP-wide	Cairns Regional Council WSP-wide	WSP	QG2.10d	WS14	Water restriction duration: Level 3	0	days
Cairns Regional Council	1327	Cairns RC WSP-wide	Cairns Regional Council WSP-wide	WSP	QG2.10e	WS15	Water restriction duration: Level 4	0	days
Cairns Regional Council	1327	Cairns RC WSP-wide	Cairns Regional Council WSP-wide	WSP	QG2.10f	WS16	Water restriction duration: Level 5 (or greater)	0	days
Cairns Regional Council	1327	Cairns RC WSP-wide	Cairns Regional Council WSP-wide	WSP	QG2.11a	WS17	Has asset management planning been undertaken in the last 10 yrs?	yes	yes/no
Cairns Regional Council	1327	Cairns RC WSP-wide	Cairns Regional Council WSP-wide	WSP	QG2.11b	WS18	Has drought management planning been undertaken in the last 10 yrs?	yes	yes/no

organisation	scheme id	scheme	scheme long name	scheme type	KPI code	SWIM code	indicator title	value	units
Cairns Regional Council	1327	Cairns RC WSP-wide	Cairns Regional Council WSP-wide	WSP	QG2.11c	WS19	Has water demand forecasts been developed or reviewed in the last 5 yrs?	yes	yes/no
Cairns Regional Council	1327	Cairns RC WSP-wide	Cairns Regional Council WSP-wide	WSP	QG2.11d	WS20	Has assessment of key capacity constraints of water infrastructure been undertaken in last 10 yrs?	yes	yes/no
Cairns Regional Council	1327	Cairns RC WSP-wide	Cairns Regional Council WSP-wide	WSP	QG2.11e	WS21	Has the timing for potential future supply augmentation been assessed in the last 10 yrs?	yes	yes/no
Cairns Regional Council	1327	Cairns RC WSP-wide	Cairns Regional Council WSP-wide	WSP	QG2.12	WS22	Months water supply remaining as at 30 June (KPI level): with contingency	6	1,2,3,4,5,6
Cairns Regional Council	1327	Cairns RC WSP-wide	Cairns Regional Council WSP-wide	WSP	QG2.13	WS23	Confidence water demand will be met: next 18 mths	high	high,fair,unsure,low,very low
Cairns Regional Council	1327	Cairns RC WSP-wide	Cairns Regional Council WSP-wide	WSP	QG2.14	WS24	Confidence water demand will be met: next 5 yrs	high	high,fair,unsure,low,very low
Cairns Regional Council	1327	Cairns RC WSP-wide	Cairns Regional Council WSP-wide	WSP	QG2.12a	WS28	Months water supply remaining as at 30 June (KPI level): without contingency	6	1,2,3,4,5,6
Cairns Regional Council	1327	Cairns RC WSP-wide	Cairns Regional Council WSP-wide	WSP	QG2.3	WS3	Available contingency supplies	yes	yes/no



Cairns Infrastructure & Assets | 2024-2025

# SWIM Annual Data

National Performance Reporting (NPR) Data as required under *Water Act 2007*

Organisation	SWIM (code)	NPR (code)	Indicator title	Value	Units
Cairns Regional Council	AS1	A1	Number water treatment plants: providing full treatment	1	Count
Cairns Regional Council	AS10	A10	Real water losses: service connections	138.5	L/service connection/day
Cairns Regional Council	AS11	A11	Real water losses: water mains	3.5	kL/km water main/day
Cairns Regional Council	AS39.1	A14	Sewerage mains breaks/chokes per 100 km sewer main	20.1	per 100 km sewer mains
Cairns Regional Council	AS41	A15	Property connections sewer breaks/chokes per 1000 connections	3.6	per 1000 connections
Cairns Regional Council	AS2.1	A2	Length water mains: drinking+non-drinking water	2316.8	km
Cairns Regional Council	AS3	A3	Connections served per km drinking+non-drinking water mains	33.1	Connections/km mains
Cairns Regional Council	AS4	A4	Number Sewage Treatment Plants	6	Count
Cairns Regional Council	AS5	A5	Length sewerage mains and channels	1370.8	km
Cairns Regional Council	AS6	A6	Connections served per km sewer main	56.3	Connections/km mains
Cairns Regional Council	AS60	A8	Drinking+non-drinking water main breaks per 100 km mains	22.7	per 100 km water main
Cairns Regional Council	AS9	A9	Infrastructure Leakage Index (ILI) drinking water supply	1.5	Index
Cairns Regional Council	CS1.1	C1	Population receiving water services	178104	People
Cairns Regional Council	CS10.1	C10	Drinking water service complaints per 1000 connections	0	per 1000 connections
Cairns Regional Council	CS11	C11	Sewerage service complaints per 1000 connections	0	per 1000 connections
Cairns Regional Council	CS12.1	C12	Drinking water and sewerage account complaints per 1000 connections	0	per 1000 connections
Cairns Regional Council	CS15	C15	Average duration unplanned interruptions: drinking water	45	mins
Cairns Regional Council	CS17	C17	Average number unplanned interruptions: drinking water	157.6	per 1000 connections
Cairns Regional Council	CS18	C18	Restrictions applied for non-payment of water bill per 1000 connections	1	per 1000 connections
Cairns Regional Council	CS2.1	C2	Connected residential properties: water	72168	Connections
Cairns Regional Council	CS3.1	C3	Connected non-residential properties: water	4592	Connections
Cairns Regional Council	CS4.1	C4	Total connected properties: water	76760	Connections
Cairns Regional Council	CS6.1	C6	Connected residential properties: sewerage	73585	Connections
Cairns Regional Council	CS7.1	C7	Connected non-residential properties: sewerage	3527	Connections
Cairns Regional Council	CS8.1	C8	Total connected properties: sewerage	77112	Connections
Cairns Regional Council	CS9.1	C9	Drinking water quality complaints per 1000 connections	4.7	per 1000 connections
Cairns Regional Council	CS68	CC_N1	% restrictions for non-payment of water accounts removed within 3 business days	19.2	%
Cairns Regional Council	CS69	CC_N2	% restrictions for non-payment of water accounts resulting in legal action	0	%
Cairns Regional Council	CS70	CC_N3	Number residential customers on a hardship program (1 July)	89	Count

Organisation	SWIM (code)	NPR (code)	Indicator title	Value	Units
Cairns Regional Council	CS71	CC_N4	Number residential customers entering hardship program during year	279	Count
Cairns Regional Council	CS72	CC_N5	Number residential customers exiting a hardship program during year	74	Count
Cairns Regional Council	CS73	CC_N6	% residential customers in hardship program who met their instalment plan	66	%
Cairns Regional Council	CS74	CC_N7	% residential customers successfully exiting a hardship program during year	20	%
Cairns Regional Council	CS75	CI_N1	Connected residential properties: recycled water	294	Connections
Cairns Regional Council	CS76	CI_N2	Connected non-residential properties: recycled water	0	Connections
Cairns Regional Council	CS77	CI_N3	Total connected properties: recycled water	294	Connections
Cairns Regional Council	EN1	E1	% sewage treated: maximum primary level only	1.9	%
Cairns Regional Council	EN2	E2	% sewage treated: maximum secondary level only	1.8	%
Cairns Regional Council	EN3	E3	% sewage treated: tertiary level	96.3	%
Cairns Regional Council	EN8	E8	% biosolids reused	100	%
Cairns Regional Council	FN1	F1	Revenue: all (NPR) water	223319.47	,\$000
Cairns Regional Council	FN14	F14	Capital expenditure: water supply	151546	,\$000
Cairns Regional Council	FN15	F15	Capital expenditure: sewerage	20655	,\$000
Cairns Regional Council	FN16	F16	Capital expenditure: water+sewerage	172201	,\$000
Cairns Regional Council	FN2	F2	Revenue: all (NPR) sewerage	99491.3	,\$000
Cairns Regional Council	FN20	F20	Dividend	4986.76	,\$000
Cairns Regional Council	FN22	F22	Net debt to equity	0	%
Cairns Regional Council	FN24	F24	Net profit after tax (NPAT)	155113.11	,\$000
Cairns Regional Council	FN25	F25	Community service obligations	1096.8	,\$000
Cairns Regional Council	FN26	F26	Capital works grants: water	142520.9	,\$000
Cairns Regional Council	FN27	F27	Capital works grants: sewerage	0	,\$000
Cairns Regional Council	FN34.2	F28	Capital expenditure: water (\$,000 per connection)	1.97	,\$000/connection
Cairns Regional Council	FN35.1	F29	Capital expenditure: sewerage (\$,000 per connection)	0.27	,\$000/connection
Cairns Regional Council	FN3	F3	Revenue: whole of service provider	322810.78	,\$000
Cairns Regional Council	FN89	F30	Net profit after tax (NPAT) ratio	0.481	Ratio
Cairns Regional Council	FN87	F8	Community service obligations ratio	0.003	ratio

Organisation	SWIM (code)	NPR (code)	Indicator title	Value	Units
Cairns Regional Council	PR55	FP_N1	Residential drinking water supply tariff data	('Tariff Type', Residential - Annual access charge for each barrack, residence, flat, strata title unit and vacant allotment, plus a per KL tariff for consumption. Residential - Annual access charge for each barrack, dwelling house, strata title unit or multi-unit dwelling and vacant allotment, plus a per KL tariff for consumption., Annual access charge): ('Fixed Charge', 384.12): ('Step 1 Charge', 1.7): ('Step 1 Boundary', NR): ('Step 2 Charge', NR): ('Step 2 Boundary', NR): ('Step 3 Charge', NR): ('Step 3 Boundary', NR): ('Step 4 Charge', NR): ('Step 4 Boundary', NR): ('Step 5 Charge', NR): ('Step 5 Boundary', NR): ('Step 6 Charge', NR): ('Step 6 Boundary', NR): ('Special Levy Charge', NR): ('Special Levy Retained', NR)	Text
Cairns Regional Council	FN100	FP_N10	Costs: operating sewerage (excl. bulk wastewater payment) \$,000 per connection	0.41	\$/,000/connection
Cairns Regional Council	FN101	FP_N11	Annual capital renewal expenditure: water supply	26328.69	\$/,000
Cairns Regional Council	FN102	FP_N12	Annual capital renewal expenditure: sewerage	20655	\$/,000
Cairns Regional Council	FN103	FP_N13	Earnings before interest, taxes, depreciation, and amortization (EBITDA)	116568.9	\$/,000
Cairns Regional Council	FN104	FP_N14	Debt to assets ratio	0	Ratio
Cairns Regional Council	FN105	FP_N15	Return on assets (ROA)	NR	Ratio
Cairns Regional Council	FN106	FP_N16	Return on equity (ROE)	NR	Ratio
Cairns Regional Council	FN107	FP_N17	Funds from operations (FFO) to net debt	0	Ratio
Cairns Regional Council	FN108	FP_N18	Funds from operations (FFO) to net interest expenses	0	Ratio
Cairns Regional Council	PR66	FP_N2	Residential sewerage services tariff data	('Tariff Type', Commercial - As residential except charge is per pedestal or 3 urinals): ('Fixed Charge', 948.86, per residential assessment): ('Step 1 Charge', NR): ('Special Levy Charge', NR): ('Special Levy Retained', no)	Text
Cairns Regional Council	PR65	FP_N3	Residential recycled water supply tariff data	('Tariff Type', NR): ('Fixed Charge', NR, NR): ('Step 1 Charge', NR): ('Step 1 Boundary', NR): ('Step 2 Charge', NR): ('Step 2 Boundary', NR): ('Special Levy Charge', NR): ('Special Levy Retained', NR)	Text
Cairns Regional Council	FN109	FP_N4	Developer services charges levied as cash payment	4961.59	\$/,000
Cairns Regional Council	FN110	FP_N5	Developer services charges levied as non-cash contributions	7605.44	\$/,000
Cairns Regional Council	FN44	FP_N6	Costs: purchase bulk drinking+non-drinking water	NR	\$/,000
Cairns Regional Council	FN45	FP_N7	Costs: purchase bulk recycled water	NR	\$/,000
Cairns Regional Council	FN97	FP_N8	Costs: operating water (excl. purchase water) \$,000 per connection	0.316	\$/,000/connection
Cairns Regional Council	FN98	FP_N9	Costs: bulk wastewater service payment	NR	\$/,000
Cairns Regional Council	HL1	H1	Water quality risk management guidelines used	ADWG 2011	Text
Cairns Regional Council	HL3	H3	% population where microbiological compliance achieved	100	%

Organisation	SWIM (code)	NPR (code)	Indicator title	Value	Units
Cairns Regional Council	HL13	H4	% population where chemical compliance achieved	100	%
Cairns Regional Council	HL5	H5	Risk based drinking water management plan assessed externally	yes	yes/no
Cairns Regional Council	EN23	HE_N1	Total greenhouse gas emissions reported under the NGER scheme	NR	t CO2eq
Cairns Regional Council	EN24	HE_N2	Greenhouse gas emissions reduction target/s	As part of its Climate Change Strategy 2030, Cairns Regional Council has committed to net zero emissions for its operations by 2030.	Text
Cairns Regional Council	HL10	HE_N3	Date of last drinking water quality systems audit	04/05/2025	dd/mm/yyyy
Cairns Regional Council	HL11	HE_N4	Number of boil water alerts issued	5	Count
Cairns Regional Council	HL12	HE_N5	Number of 'do not drink' notices issued	0	Count
Cairns Regional Council	CS64.1	IA10	Total service connections: water	59144	Connections
Cairns Regional Council	AS52	IA10; IA11	Current Annual Real Losses (CARL): drinking water	2989.6	ML
Cairns Regional Council	AS49	IA10; IA11	Service connections per km water main	25.5	Service connections/km mains
Cairns Regional Council	AS54	IA11	Length water mains: drinking water	2316.8	km
Cairns Regional Council	AS38.1	IA14	Number sewerage mains breaks/chokes	276	Count
Cairns Regional Council	AS40	IA15	Number property connections sewer breaks/chokes	276	Count
Cairns Regional Council	AS59	IA8	Number of drinking+non-drinking water main breaks, bursts and leaks	527	Count
Cairns Regional Council	AS9.1	IA9	Average drinking water pressure across the scheme	62.3	m
Cairns Regional Council	AS9.2	IA9	Unavoidable Annual Real Losses (UARL): drinking water	2025.2	ML
Cairns Regional Council	CS22.1	IC10	Number drinking water complaints: service	3	Count
Cairns Regional Council	CS21	IC11	Number sewerage complaints: service	0	Count
Cairns Regional Council	CS23.1	IC12	Number drinking water and sewerage complaints: accounts	3	Count
Cairns Regional Council	CS62	IC13	Number water and sewerage complaints: all	7	Count
Cairns Regional Council	CS61	IC17	Number connections affected by unplanned interruptions	12095	Count
Cairns Regional Council	CS48	IC18	Number restrictions applied for non-payment of water bill	78	Count
Cairns Regional Council	CS20.1	IC9	Number drinking water complaints: water quality	358	Count
Cairns Regional Council	CS68.1	ICC_N1	Number restrictions applied for non-payment of water accounts removed within 3 business days	15	Count
Cairns Regional Council	CS69.1	ICC_N2	Number restrictions for non-payment of water accounts resulting in legal action	0	Count
Cairns Regional Council	EN18	IE1	Volume sewage treated: maximum primary level only	474.5	ML
Cairns Regional Council	EN19	IE2	Volume sewage treated: maximum secondary level only	460.6	ML
Cairns Regional Council	EN20	IE3	Volume sewage treated: tertiary level	24364.7	ML

Organisation	SWIM (code)	NPR (code)	Indicator title	Value	Units
Cairns Regional Council	FN32	IF11	Costs: operating water (incl. purchase water)	24269.04	,\$000
Cairns Regional Council	FN33	IF12	Costs: operating sewerage (incl. bulk wastewater payment)	31836.59	,\$000
Cairns Regional Council	PR49	IFP_N1	Residential drinking water usage upper bound of 1st Step: kL	NR	kL
Cairns Regional Council	PR50	IFP_N1	Residential drinking water usage upper bound of 2nd Step: kL	NR	kL
Cairns Regional Council	PR51	IFP_N1	Residential drinking water usage upper bound of 3rd Step: kL	NR	kL
Cairns Regional Council	PR52	IFP_N1	Residential drinking water usage upper bound of 4th Step: kL	NR	kL
Cairns Regional Council	PR53	IFP_N1	Residential drinking water usage upper bound of 5th Step: kL	NR	kL
Cairns Regional Council	PR54	IFP_N1	Residential drinking water usage upper bound of 6th Step: kL	NR	kL
Cairns Regional Council	PR10	IFP_N1	Residential drinking water usage charge 3rd Step: value	NR	\$/kL
Cairns Regional Council	PR12	IFP_N1	Residential drinking water usage charge 4th Step: value	NR	\$/kL
Cairns Regional Council	PR14	IFP_N1	Residential drinking water usage charge 5th Step: value	NR	\$/kL
Cairns Regional Council	PR16	IFP_N1	Residential drinking water usage charge 6th Step: value	NR	\$/kL
Cairns Regional Council	PR23	IFP_N1	Residential drinking water special levies: value	NR	\$/kL
Cairns Regional Council	PR8	IFP_N1	Residential drinking water usage charge 2nd Step: value	NR	\$/kL
Cairns Regional Council	PR25	IFP_N1	Revenue from residential drinking water special levies retained by service provider	NR	yes/no
Cairns Regional Council	PR5	IFP_N1	Residential drinking water fixed charge: description	Annual access charge	Text
Cairns Regional Council	PR1	IFP_N1	Residential drinking water pricing tariff structure	Residential - Annual access charge for each barrack, residence, flat, strata title unit and vacant allotment, plus a per KL tariff for consumption. Residential - Annual access charge for each barrack, dwelling house, strata title unit or multi-unit dwelling and vacant allotment, plus a per KL tariff for consumption.	Text
Cairns Regional Council	PR3	IFP_N1	Residential drinking water fixed charge: value	384.12	\$/annum
Cairns Regional Council	PR6	IFP_N1	Residential drinking water usage charge 1st Step: value	1.7	\$/kL
Cairns Regional Council	FN99	IFP_N10	Costs: operating sewerage (excl. bulk wastewater payment)	31836.59	,\$000
Cairns Regional Council	PR32	IFP_N2	Residential sewerage usage charge: value	NR	\$/kL
Cairns Regional Council	PR33	IFP_N2	Residential sewerage special levies: value	NR	\$
Cairns Regional Council	PR4	IFP_N2	Residential sewerage pricing tariff structure	Commercial - As residential except charge is per pedestal or 3 urinals	Text
Cairns Regional Council	PR40	IFP_N2	Residential sewerage fixed charge: description	per residential assessment	Text
Cairns Regional Council	PR31	IFP_N2	Residential sewerage fixed charge: value	948.86	\$/annum
Cairns Regional Council	PR34	IFP_N2	Revenue from residential sewerage special levies retained by service provider	no	yes/no
Cairns Regional Council	PR56	IFP_N3	Residential recycled water pricing tariff structure	NR	Text

Organisation	SWIM (code)	NPR (code)	Indicator title	Value	Units
Cairns Regional Council	PR57	IFP_N3	Residential recycled water fixed charge: recycled water value	NR	\$/annum
Cairns Regional Council	PR58	IFP_N3	Residential recycled water fixed charge: description	NR	Text
Cairns Regional Council	PR59	IFP_N3	Residential recycled water usage charge 1st Step: value	NR	\$/kL
Cairns Regional Council	PR60	IFP_N3	Residential recycled water usage upper bound of 1st Step: kL	NR	kL
Cairns Regional Council	PR61	IFP_N3	Residential recycled water usage charge 2nd Step: value	NR	\$/kL
Cairns Regional Council	PR62	IFP_N3	Residential recycled water usage upper bound of 2nd Step: kL	NR	kL
Cairns Regional Council	PR63	IFP_N3	Residential recycled water special levies: value	NR	\$/kL
Cairns Regional Council	PR64	IFP_N3	Revenue from residential recycled water special levies retained by service provider	NR	yes/no
Cairns Regional Council	FN47	IFP_N8	Costs: operating water (excl. purchase water)	24269.04	,\$000
Cairns Regional Council	CS22	IIC10	Number water complaints: service	3	Count
Cairns Regional Council	CS23	IIC12	Number water and sewerage complaints: accounts	3	Count
Cairns Regional Council	CS24	IIC13	Number water and sewerage complaints: all other	0	Count
Cairns Regional Council	CS67.1	IIC17	Total connected properties: drinking water only	76760	Connections
Cairns Regional Council	CS20	IIC9	Number water complaints: water quality	358	Count
Cairns Regional Council	WA36.1	IW10.1	Volume non-drinking water supplied: non-revenue	NR	ML
Cairns Regional Council	WA36	IW10.1	Volume drinking water supplied: non-revenue	3279.4	ML
Cairns Regional Council	WA230	IW14.3	Volume drinking+non-drinking water exported: supplied to external 3	NR	ML
Cairns Regional Council	WA229	IW14.3	Volume drinking+non-drinking water exported: supplied to external 2	NR	ML
Cairns Regional Council	WA231	IW14.3	Volume drinking+non-drinking water exported: supplied to external 4	NR	ML
Cairns Regional Council	WA228	IW14.3	Volume drinking+non-drinking water exported: supplied to external 1	NR	ML
Cairns Regional Council	WA232	IW14.3	Volume drinking+non-drinking water exported: supplied to external 5	NR	ML
Cairns Regional Council	WA178	IW29	Volume treated sewage discharge: sea/estuary	21777.9	ML
Cairns Regional Council	WA175	IW29	Volume treated sewage discharge: inland surface waters	1519.3	ML
Cairns Regional Council	WA176	IW29	Volume treated sewage discharge: land	NR	ML
Cairns Regional Council	WA177	IW29	Volume treated sewage discharge: groundwater	NR	ML
Cairns Regional Council	WS14	IWR_N7	Water restriction duration: Level 3	0	days
Cairns Regional Council	WS15	IWR_N7	Water restriction duration: Level 4	0	days
Cairns Regional Council	WS16	IWR_N7	Water restriction duration: Level 5 (or greater)	0	days

Organisation	SWIM (code)	NPR (code)	Indicator title	Value	Units
Cairns Regional Council	PR43	P2	Annual residential bill based on 200kL/a: drinking water	724.12	\$
Cairns Regional Council	PR44	P3	Typical residential bill: drinking water	809.56	\$
Cairns Regional Council	PR45	P5	Annual residential bill based on 200kL/a: sewerage	948.86	\$
Cairns Regional Council	PR46	P6	Typical residential bill: sewerage	948.86	\$
Cairns Regional Council	PR47	P7	Annual residential bill based on 200kL/a: drinking water+sewerage	1672.98	\$
Cairns Regional Council	PR48	P8	Typical residential bill: drinking water+sewerage	1758.42	\$
Cairns Regional Council	WA1	W1	Volume water self-sourced: surface water	29101.6	ML
Cairns Regional Council	WA36.2	W10.1	Volume drinking+non-drinking water supplied: non-revenue	3279.4	ML
Cairns Regional Council	WA11	W11	Volume urban water supplied: all	23506.9	ML
Cairns Regional Council	WA74	W11.3	Volume drinking water produced/supplied into water supply system	27822.4	ML
Cairns Regional Council	WA12.1	W12	Annual residential water supplied (ML per connection)	0.3	ML/connection/year
Cairns Regional Council	WA233	W14.3	Total volume drinking+non-drinking water exported: external	NR	ML
Cairns Regional Council	WA15	W15	Volume recycled water exported: external	NR	ML
Cairns Regional Council	WA16	W16	Volume sewage collected: residential+non-trade	MD	ML
Cairns Regional Council	WA17	W17	Volume sewage collected: trade waste	MD	ML
Cairns Regional Council	WA18	W18	Volume sewage collected: residential+trade	22906.3	ML
Cairns Regional Council	WA66	W18.1	Volume sewage exported	NR	ML
Cairns Regional Council	WA67	W18.2	Volume sewage imported: external	3.3	ML
Cairns Regional Council	WA68	W18.3	Volume sewage collected: sewer mining	NR	ML
Cairns Regional Council	WA69	W18.4	Volume sewage inflow measured: STP inlet	22906.3	ML
Cairns Regional Council	WA31	W18.5	Volume sewage treated	25300	ML
Cairns Regional Council	WA19.1	W19	Volume sewage collected (ML per connection)	0.3	ML/connection/year
Cairns Regional Council	WA2	W2	Volume water self-sourced: groundwater	NR	ML
Cairns Regional Council	WA20	W20	Volume recycled water supplied: residential	NR	ML
Cairns Regional Council	WA21	W21	Volume recycled water supplied: non-residential	0	ML
Cairns Regional Council	WA23	W23	Volume recycled water supplied: environmental flows	NR	ML
Cairns Regional Council	WA73	W25.1	Volume recycled water supplied: aquifer recharge	NR	ML
Cairns Regional Council	WA26	W26	Volume recycled water supplied: all	2106.2	ML
Cairns Regional Council	WA27	W27	% treated sewage supplied as recycled water	8.3	%

Organisation	SWIM (code)	NPR (code)	Indicator title	Value	Units
Cairns Regional Council	WA215	W29	Volume treated sewage discharge: all	23297.2	ML
Cairns Regional Council	WA61	W3.1	Volume water self-sourced: desalination marine water	NR	ML
Cairns Regional Council	WA217	W30	Sewage losses: all	1488.3	ML
Cairns Regional Council	WA197	W31	Volume drinking+non-drinking water returned to surface water	NR	ML
Cairns Regional Council	WA45	W5	Volume all water imported: external	NR	ML
Cairns Regional Council	WA238	W5.3	Volume drinking+non-drinking water imported: external (all Suppliers)	NR	ML
Cairns Regional Council	WA101	W6	Volume recycled water imported: external	NR	ML
Cairns Regional Council	WA7.1	W7	Volume water sourced (excl. recycled): all	29101.6	ML
Cairns Regional Council	WA206	W8.3	Volume drinking+non-drinking water supplied: residential	18061	ML
Cairns Regional Council	WA121	W9.3	Volume drinking+non-drinking water supplied: non-residential	5445.9	ML
Cairns Regional Council	WA98	WR_N1	Volume recycled stormwater supplied: all	NR	ML
Cairns Regional Council	WA124	WR_N2	Volume drinking+non-drinking water used by your organisation	1123.8	ML
Cairns Regional Council	WA219	WR_N3	Volume recycled water supplied: own use	1614.4	ML
Cairns Regional Council	WA235	WR_N4	Volume unbilled recycled water supplied: beneficial reuse	491.8	ML
Cairns Regional Council	WS12	WR_N5	Water restriction duration: Level 1	0	days
Cairns Regional Council	WS13	WR_N6	Water restriction duration: Level 2	0	days
Cairns Regional Council	WS27	WR_N7	Water restriction duration: Level 3 (or greater)	0	days