



PRIORITY INFRASTRUCTURE AREA

Priority Infrastructure Area Boundary (PIA)

PLANNING AREAS

Low Density Residential	Medium Impact Industry
Low-medium Density Residential	High Impact Industry
Medium Density Residential	Waterfront and Marine Industry
Tourist Accommodation	Tourism
Principal Centre	Community Facilities
Major Centre	Emerging Community Zone
District Centre	Mixed Use
Local Centre	Rural
Neighbourhood Centre	Rural Residential
Sport and Recreation	Special Purpose
Open Space	Specialised Centre
Environmental Management	Cairns Airport Land
Conservation	Strategic Port Land
Township	Cairns South State Development Area
Low Impact Industry	Tropical North State Development Area

GENERAL

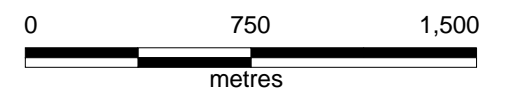
Property Boundary	LGIP Projection Area
Zone Precincts	

Disclaimer:
 While every care is taken to ensure the accuracy of this map, Cairns Regional Council makes no representations or warranties about its accuracy, reliability, completeness or suitability for any particular purpose and disclaims all responsibility and all liability (including without limitation, liability in negligence) for all expenses, losses, damages (including indirect or consequential damage) and costs which might incur as a result of the data being inaccurate or incomplete in any way and for any reason.
 © Copyright Cairns Regional Council 2019

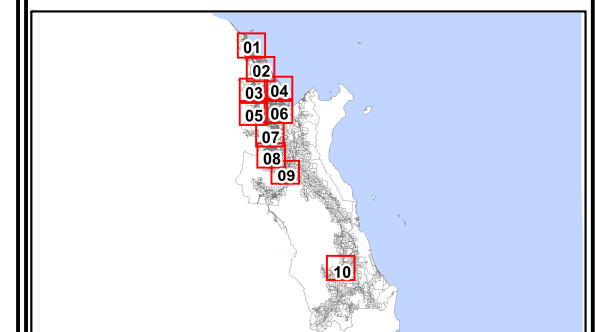
Cadastral Disclaimer:
 Despite Department of Natural Resources, Mines and Energy (DNRME)'s best efforts, DNRME makes no representations or warranties in relation to the information and to the extent permitted by law, excludes or limit all warranties relating to correctness, accuracy, reliability, completeness or currency and all liability for any direct, indirect and consequential costs, losses, damages and expenses incurred in any way (including but not limited to that arising from negligence) in connection with any use of or reliance on the information.
 © The State of Queensland - Dept of Natural Resources, Mines and Energy (DNRME) 2018



DATUM:
 Geocentric Datum of Australia 1994 (GDA94 - Zone 55)



Scale - 1:25,000 (@ A3)



SHEET No. PIA-01





PRIORITY INFRASTRUCTURE AREA

Priority Infrastructure Area Boundary (PIA)

PLANNING AREAS

Low Density Residential	Medium Impact Industry
Low-medium Density Residential	High Impact Industry
Medium Density Residential	Waterfront and Marine Industry
Tourist Accommodation	Tourism
Principal Centre	Community Facilities
Major Centre	Emerging Community Zone
District Centre	Mixed Use
Local Centre	Rural
Neighbourhood Centre	Rural Residential
Sport and Recreation	Special Purpose
Open Space	Specialised Centre
Environmental Management	Cairns Airport Land
Conservation	Strategic Port Land
Township	Cairns South State Development Area
Low Impact Industry	Tropical North State Development Area

GENERAL

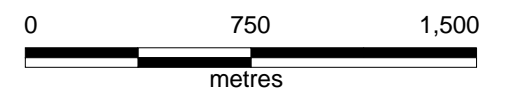
Property Boundary	LGIP Projection Area
Zone Precincts	

Disclaimer:
While every care is taken to ensure the accuracy of this map, Cairns Regional Council makes no representations or warranties about its accuracy, reliability, completeness or suitability for any particular purpose and disclaims all responsibility and all liability (including without limitation liability in negligence) for all expenses, losses, damages (including indirect or consequential damage) and costs which might incur as a result of the data being inaccurate or incomplete in any way and for any reason.
© Copyright Cairns Regional Council 2019

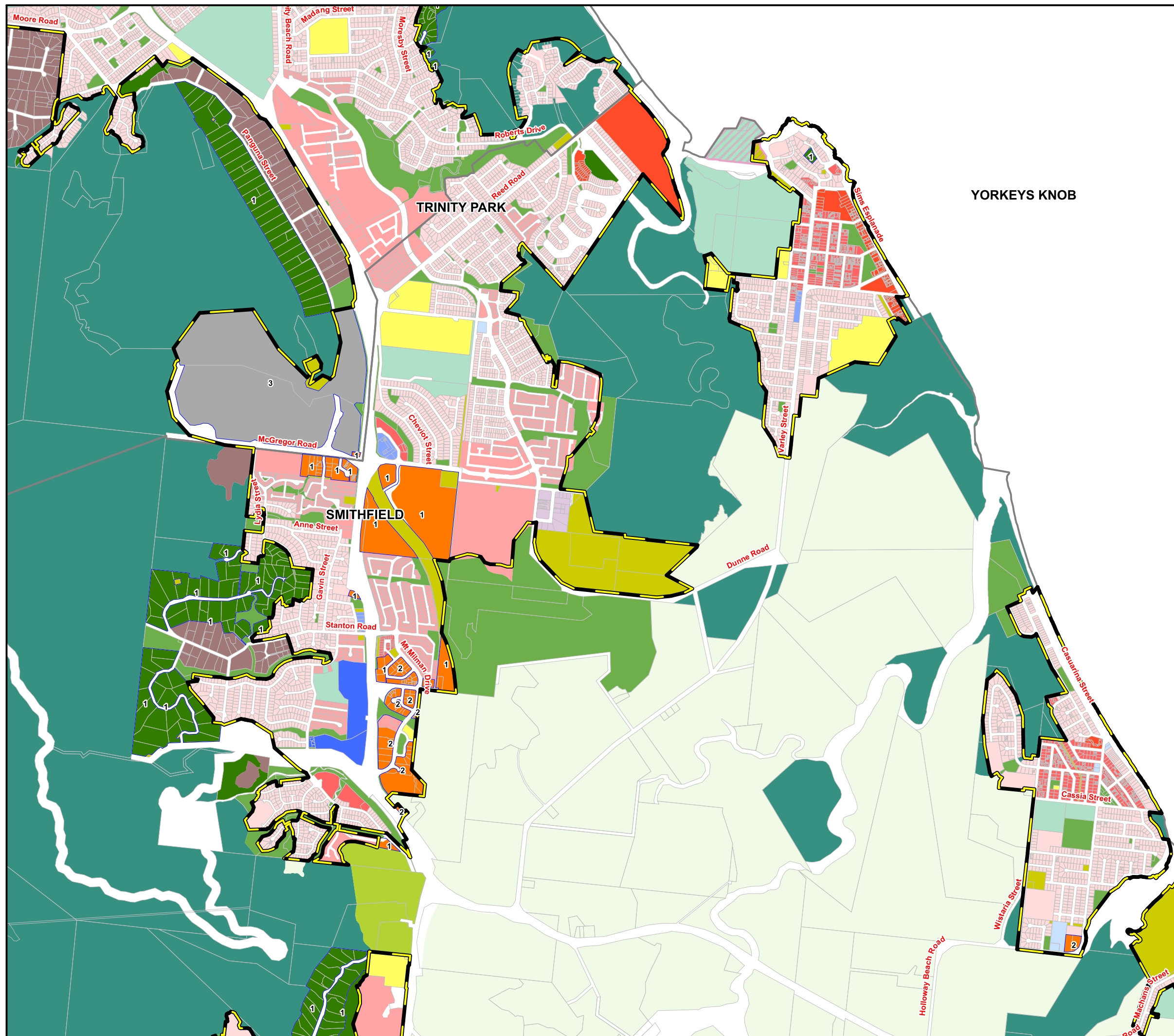
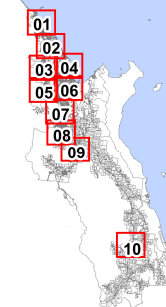
Cadastral Disclaimer:
Despite Department of Natural Resources, Mines and Energy (DNRME)'s best efforts, DNRME makes no representations or warranties in relation to the information and to the extent permitted by law, excludes or limit all warranties relating to correctness, accuracy, reliability, completeness or currency and all liability for any direct, indirect and consequential costs, losses, damages and expenses incurred in any way (including but not limited to that arising from negligence) in connection with any use of or reliance on the information.
© The State of Queensland - Dept of Natural Resources, Mines and Energy (DNRME) 2018



DATUM:
Geocentric Datum of Australia 1994 (GDA94 - Zone 55)



Scale - 1:25,000 (@ A3)





PRIORITY INFRASTRUCTURE AREA

Priority Infrastructure Area Boundary (PIA)

PLANNING AREAS

	Low Density Residential		Medium Impact Industry
	Low-medium Density Residential		High Impact Industry
	Medium Density Residential		Waterfront and Marine Industry
	Tourist Accommodation		Tourism
	Principal Centre		Community Facilities
	Major Centre		Emerging Community Zone
	District Centre		Mixed Use
	Local Centre		Rural
	Neighbourhood Centre		Rural Residential
	Sport and Recreation		Special Purpose
	Open Space		Specialised Centre
	Environmental Management		Cairns Airport Land
	Conservation		Strategic Port Land
	Township		Cairns South State Development Area
	Low Impact Industry		Tropical North State Development Area

GENERAL

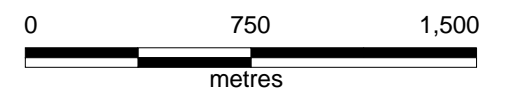
	Property Boundary		LGIP Projection Area
	Zone Precincts		

Disclaimer:
 While every care is taken to ensure the accuracy of this map, Cairns Regional Council makes no representations or warranties about its accuracy, reliability, completeness or suitability for any particular purpose and disclaims all responsibility and all liability (including without limitation liability in negligence) for all expenses, losses, damages (including indirect or consequential damage) and costs which might incur as a result of the data being inaccurate or incomplete in any way and for any reason.
 © Copyright Cairns Regional Council 2019

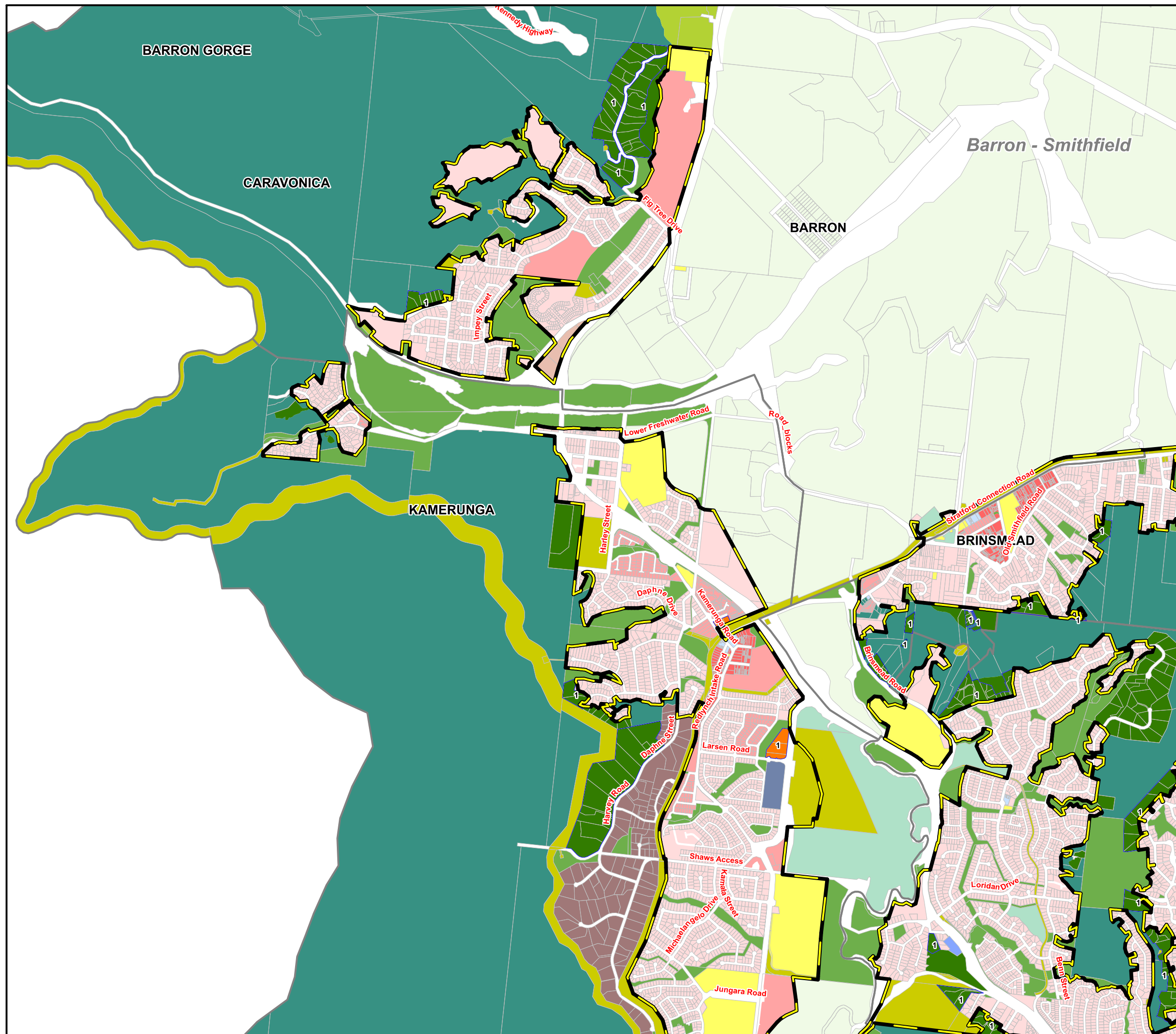
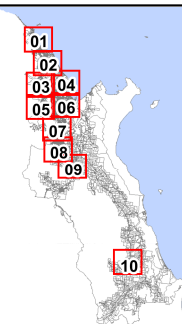
Cadastral Disclaimer:
 Despite Department of Natural Resources, Mines and Energy (DNRME)'s best efforts, DNRME makes no representations or warranties in relation to the information and to the extent permitted by law, excludes or limit all warranties relating to correctness, accuracy, reliability, completeness or currency and all liability for any direct, indirect and consequential costs, losses, damages and expenses incurred in any way (including but not limited to that arising from negligence) in connection with any use of or reliance on the information.
 © The State of Queensland - Dept of Natural Resources, Mines and Energy (DNRME) 2018

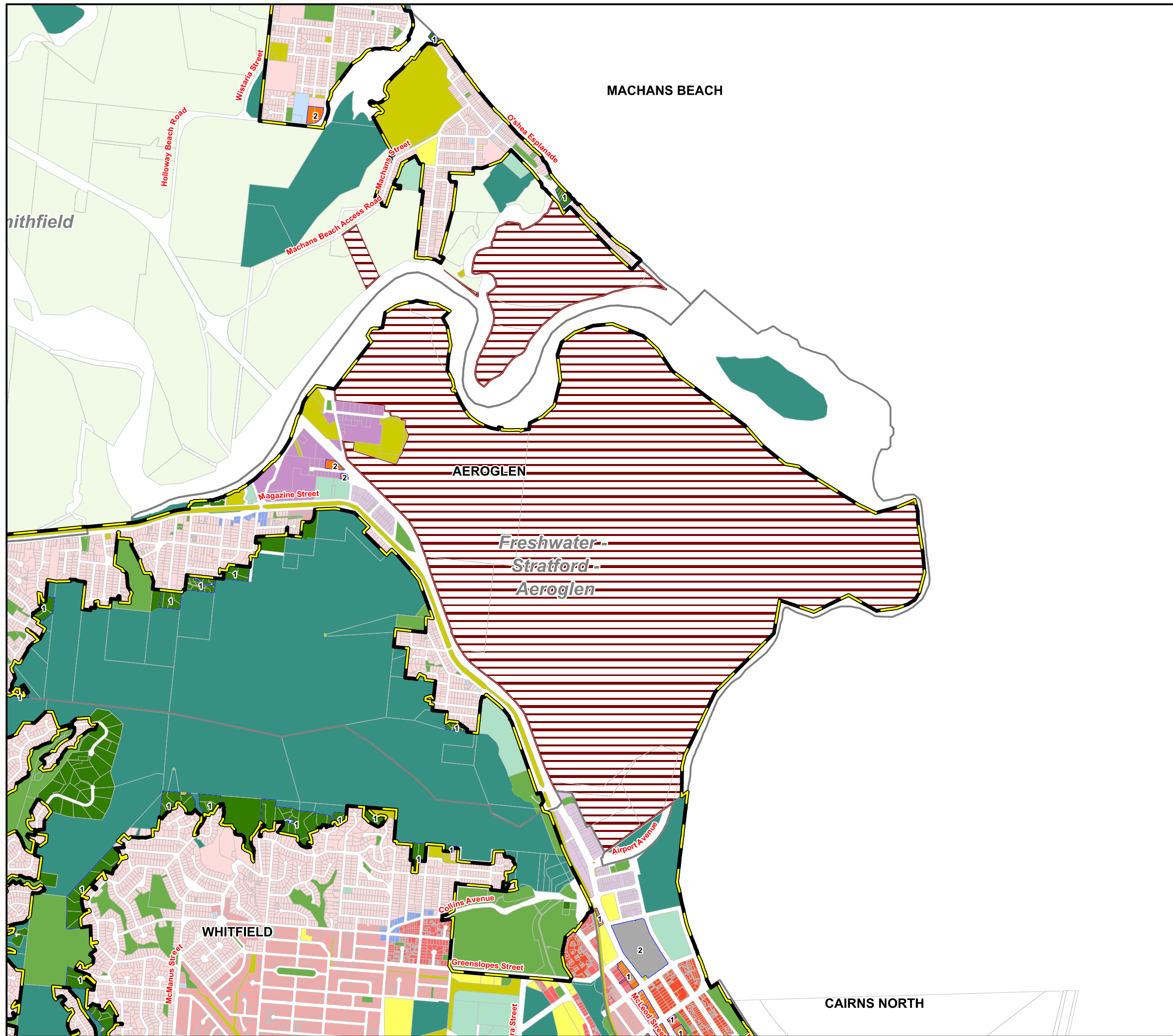


DATUM:
 Geocentric Datum of Australia 1994 (GDA94 - Zone 55)



Scale - 1:25,000 (@ A3)





PRIORITY INFRASTRUCTURE AREA

Priority Infrastructure Area Boundary (PIA)

PLANNING AREAS

Low Density Residential	Medium Impact Industry
Low-medium Density Residential	High Impact Industry
Medium Density Residential	Waterfront and Marine Industry
Tourist Accommodation	Tourism
Principal Centre	Community Facilities
Major Centre	Emerging Community Zone
District Centre	Mixed Use
Local Centre	Rural
Neighbourhood Centre	Rural Residential
Sport and Recreation	Special Purpose
Open Space	Specialised Centre
Environmental Management	Cairns Airport Land
Conservation	Strategic Port Land
Township	Cairns South State Development Area
Low Impact Industry	Tropical North State Development Area

GENERAL

Property Boundary LGIP Projection Area

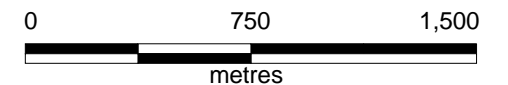
Zone Precincts

Disclaimer:
While every care is taken to ensure the accuracy of this map, Cairns Regional Council makes no representations or warranties about its accuracy, reliability, completeness or suitability for any particular purpose and disclaims all responsibility and all liability (including without limitation liability in negligence) for all expenses, losses, damages (including indirect or consequential damage) and costs which might incur as a result of the data being inaccurate or incomplete in any way and for any reason.
© Copyright Cairns Regional Council 2019

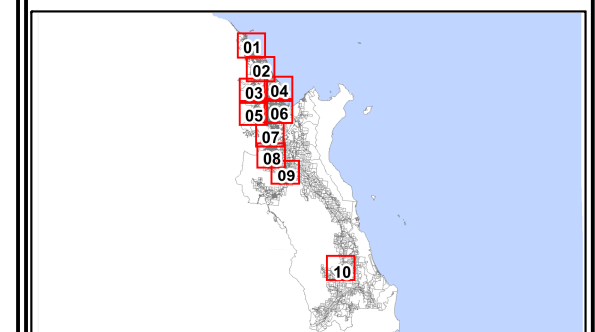
Cadastral Disclaimer:
Despite Department of Natural Resources, Mines and Energy (DNRME)'s best efforts, DNRME makes no representations or warranties in relation to the information and to the extent permitted by law, excludes or limit all warranties relating to correctness, accuracy, reliability, completeness or currency and all liability for any direct, indirect and consequential costs, losses, damages and expenses incurred in any way (including but not limited to that arising from negligence) in connection with any use of or reliance on the information.
© The State of Queensland - Dept of Natural Resources, Mines and Energy (DNRME) 2018



DATUM:
Geocentric Datum of Australia 1994 (GDA94 - Zone 55)



Scale - 1:25,000 (@ A3)





PRIORITY INFRASTRUCTURE AREA

Priority Infrastructure Area Boundary (PIA)

PLANNING AREAS

Low Density Residential	Medium Impact Industry
Low-medium Density Residential	High Impact Industry
Medium Density Residential	Waterfront and Marine Industry
Tourist Accommodation	Tourism
Principal Centre	Community Facilities
Major Centre	Emerging Community Zone
District Centre	Mixed Use
Local Centre	Rural
Neighbourhood Centre	Rural Residential
Sport and Recreation	Special Purpose
Open Space	Specialised Centre
Environmental Management	Cairns Airport Land
Conservation	Strategic Port Land
Township	Cairns South State Development Area
Low Impact Industry	Tropical North State Development Area

GENERAL

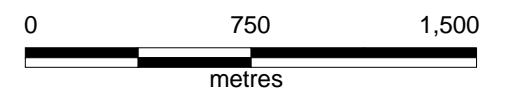
Property Boundary	LGIP Projection Area
Zone Precincts	

Disclaimer:
While every care is taken to ensure the accuracy of this map, Cairns Regional Council makes no representations or warranties about its accuracy, reliability, completeness or suitability for any particular purpose and disclaims all responsibility and all liability (including without limitation liability in negligence) for all expenses, losses, damages (including indirect or consequential damage) and costs which might incur as a result of the data being inaccurate or incomplete in any way and for any reason.
© Copyright Cairns Regional Council 2019

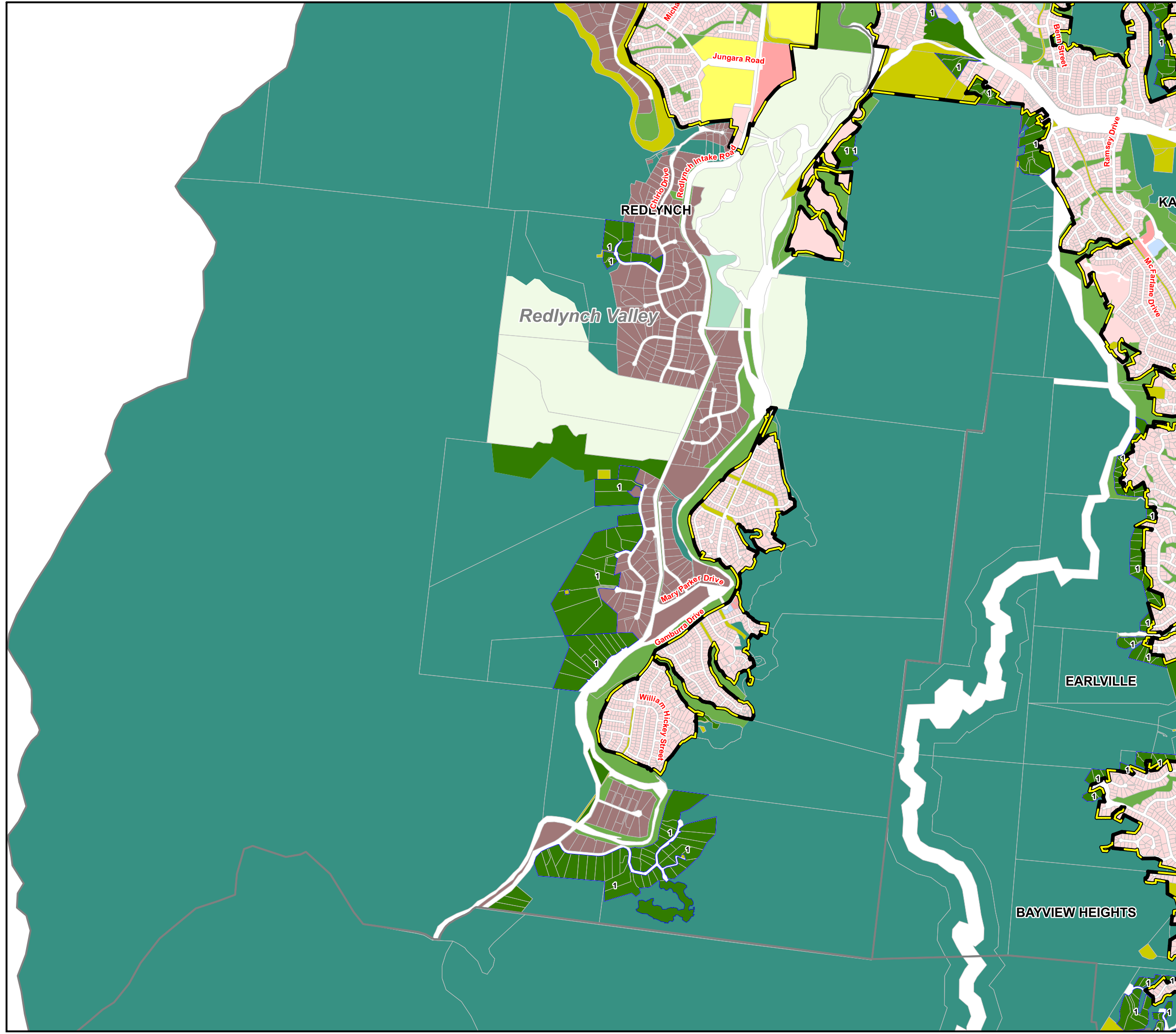
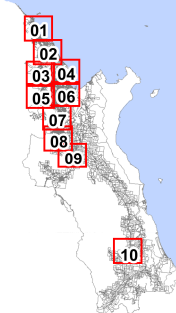
Cadastral Disclaimer:
Despite Department of Natural Resources, Mines and Energy (DNRME)'s best efforts, DNRME makes no representations or warranties in relation to the information and to the extent permitted by law, excludes or limit all warranties relating to correctness, accuracy, reliability, completeness or currency and all liability for any direct, indirect and consequential costs, losses, damages and expenses incurred in any way (including but not limited to that arising from negligence) in connection with any use of or reliance on the information.
© The State of Queensland - Dept of Natural Resources, Mines and Energy (DNRME) 2018

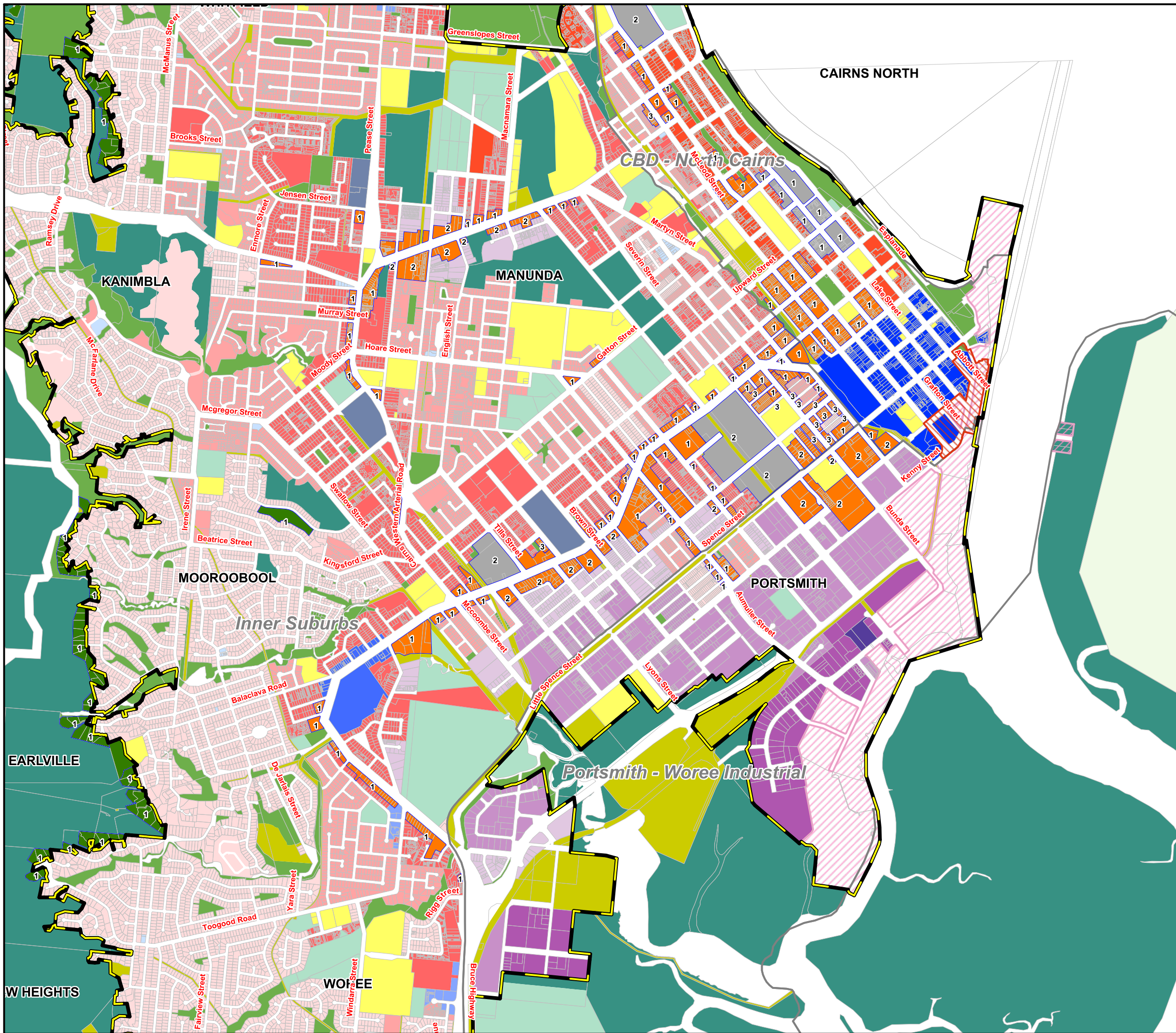


DATUM:
Geocentric Datum
of Australia 1994
(GDA94 - Zone 55)



Scale - 1:25,000 (@ A3)





PRIORITY INFRASTRUCTURE AREA

Priority Infrastructure Area Boundary (PIA)

PLANNING AREAS

Low Density Residential	Medium Impact Industry
Low-medium Density Residential	High Impact Industry
Medium Density Residential	Waterfront and Marine Industry
Tourist Accommodation	Tourism
Principal Centre	Community Facilities
Major Centre	Emerging Community Zone
District Centre	Mixed Use
Local Centre	Rural
Neighbourhood Centre	Rural Residential
Sport and Recreation	Special Purpose
Open Space	Specialised Centre
Environmental Management	Cairns Airport Land
Conservation	Strategic Port Land
Township	Cairns South State Development Area
Low Impact Industry	Tropical North State Development Area

GENERAL

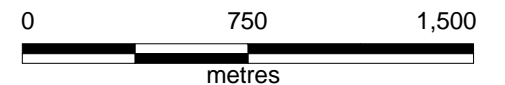
Property Boundary
 Zone Precincts
 LGIP Projection Area

Disclaimer:
 While every care is taken to ensure the accuracy of this map, Cairns Regional Council makes no representations or warranties about its accuracy, reliability, completeness or suitability for any particular purpose and disclaims all responsibility and all liability (including without limitation liability in negligence) for all expenses, losses, damages (including indirect or consequential damages) and costs which might incur as a result of the data being inaccurate or incomplete in any way and for any reason.
 © Copyright Cairns Regional Council 2019

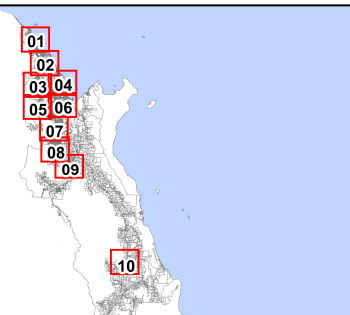
Cadastral Disclaimer:
 Despite Department of Natural Resources, Mines and Energy (DNRME)'s best efforts, DNRME makes no representations or warranties in relation to the information and to the extent permitted by law, excludes or limit all warranties relating to correctness, accuracy, reliability, completeness or currency and all liability for any direct, indirect and consequential costs, losses, damages and expenses incurred in any way (including but not limited to that arising from negligence) in connection with any use of or reliance on the information.
 © The State of Queensland - Dept of Natural Resources, Mines and Energy (DNRME) 2018



DATUM:
 Geocentric Datum
 of Australia 1994
 (GDA94 - Zone 55)



Scale - 1:25,000 (@ A3)





PRIORITY INFRASTRUCTURE AREA

Priority Infrastructure Area Boundary (PIA)

PLANNING AREAS

	Low Density Residential		Medium Impact Industry
	Low-medium Density Residential		High Impact Industry
	Medium Density Residential		Waterfront and Marine Industry
	Tourist Accommodation		Tourism
	Principal Centre		Community Facilities
	Major Centre		Emerging Community Zone
	District Centre		Mixed Use
	Local Centre		Rural
	Neighbourhood Centre		Rural Residential
	Sport and Recreation		Special Purpose
	Open Space		Specialised Centre
	Environmental Management		Cairns Airport Land
	Conservation		Strategic Port Land
	Township		Cairns South State Development Area
	Low Impact Industry		Tropical North State Development Area

GENERAL

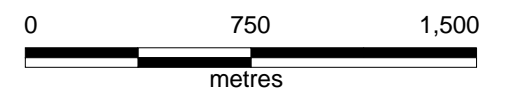
	Property Boundary		LGIP Projection Area
	Zone Precincts		

Disclaimer:
While every care is taken to ensure the accuracy of this map, Cairns Regional Council makes no representations or warranties about its accuracy, reliability, completeness or suitability for any particular purpose and disclaims all responsibility and all liability (including without limitation, liability in negligence) for all expenses, losses, damages (including indirect or consequential damage) and costs which might incur as a result of the data being inaccurate or incomplete in any way and for any reason.
© Copyright Cairns Regional Council 2019

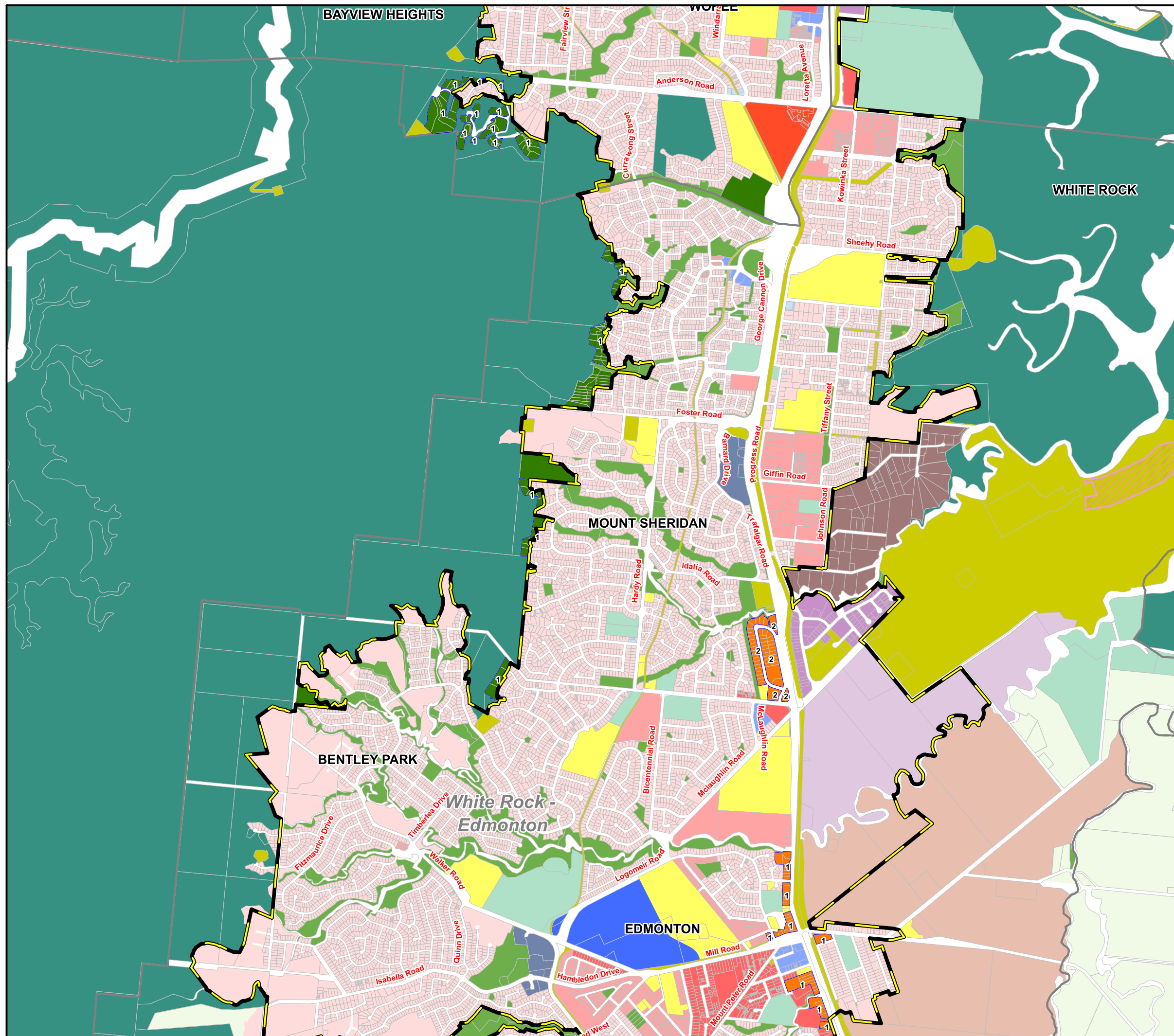
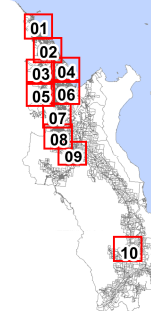
Cadastral Disclaimer:
Despite Department of Natural Resources, Mines and Energy (DNRME)'s best efforts, DNRME makes no representations or warranties in relation to the information and to the extent permitted by law, excludes or limit all warranties relating to correctness, accuracy, reliability, completeness or currency and all liability for any direct, indirect and consequential costs, losses, damages and expenses incurred in any way (including but not limited to that arising from negligence) in connection with any use of or reliance on the information.
© The State of Queensland - Dept of Natural Resources, Mines and Energy (DNRME) 2018



DATUM:
Geocentric Datum of Australia 1994 (GDA94 - Zone 55)



Scale - 1:25,000 (@ A3)





PRIORITY INFRASTRUCTURE AREA

Priority Infrastructure Area Boundary (PIA)

PLANNING AREAS

	Low Density Residential		Medium Impact Industry
	Low-medium Density Residential		High Impact Industry
	Medium Density Residential		Waterfront and Marine Industry
	Tourist Accommodation		Tourism
	Principal Centre		Community Facilities
	Major Centre		Emerging Community Zone
	District Centre		Mixed Use
	Local Centre		Rural
	Neighbourhood Centre		Rural Residential
	Sport and Recreation		Special Purpose
	Open Space		Specialised Centre
	Environmental Management		Cairns Airport Land
	Conservation		Strategic Port Land
	Township		Cairns South State Development Area
	Low Impact Industry		Tropical North State Development Area

GENERAL

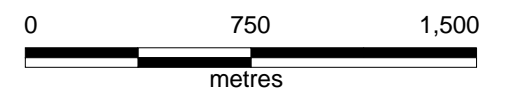
	Property Boundary		LGIP Projection Area
	Zone Precincts		

Disclaimer:
While every care is taken to ensure the accuracy of this map, Cairns Regional Council makes no representations or warranties about its accuracy, reliability, completeness or suitability for any particular purpose and disclaims all responsibility and all liability (including without limitation, liability in negligence) for all expenses, losses, damages (including indirect or consequential damage) and costs which might incur as a result of the data being inaccurate or incomplete in any way and for any reason.
© Copyright Cairns Regional Council 2019

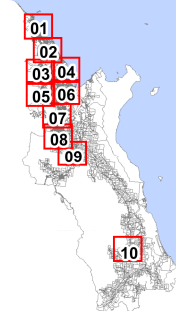
Cadastral Disclaimer:
Despite Department of Natural Resources, Mines and Energy (DNRM)'s best efforts, DNRM makes no representations or warranties in relation to the information and to the extent permitted by law, excludes or limit all warranties relating to correctness, accuracy, reliability, completeness or currency and all liability for any direct, indirect and consequential costs, losses, damages and expenses incurred in any way (including but not limited to that arising from negligence) in connection with any use of or reliance on the information.
© The State of Queensland - Dept of Natural Resources, Mines and Energy (DNRM) 2018



DATUM:
Geocentric Datum of Australia 1994 (GDA94 - Zone 55)



Scale - 1:25,000 (@ A3)





PRIORITY INFRASTRUCTURE AREA

Priority Infrastructure Area Boundary (PIA)

PLANNING AREAS

Low Density Residential	Medium Impact Industry
Low-medium Density Residential	High Impact Industry
Medium Density Residential	Waterfront and Marine Industry
Tourist Accommodation	Tourism
Principal Centre	Community Facilities
Major Centre	Emerging Community Zone
District Centre	Mixed Use
Local Centre	Rural
Neighbourhood Centre	Rural Residential
Sport and Recreation	Special Purpose
Open Space	Specialised Centre
Environmental Management	Cairns Airport Land
Conservation	Strategic Port Land
Township	Cairns South State Development Area
Low Impact Industry	Tropical North State Development Area

GENERAL

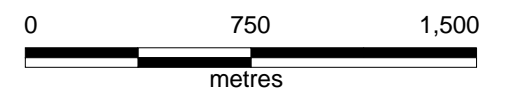
Property Boundary	LGIP Projection Area
Zone Precincts	

Disclaimer:
 While every care is taken to ensure the accuracy of this map, Cairns Regional Council makes no representations or warranties about its accuracy, reliability, completeness or suitability for any particular purpose and disclaims all responsibility and all liability (including without limitation liability in negligence) for all expenses, losses, damages (including indirect or consequential damage) and costs which might incur as a result of the data being inaccurate or incomplete in any way and for any reason.
 © Copyright Cairns Regional Council 2019

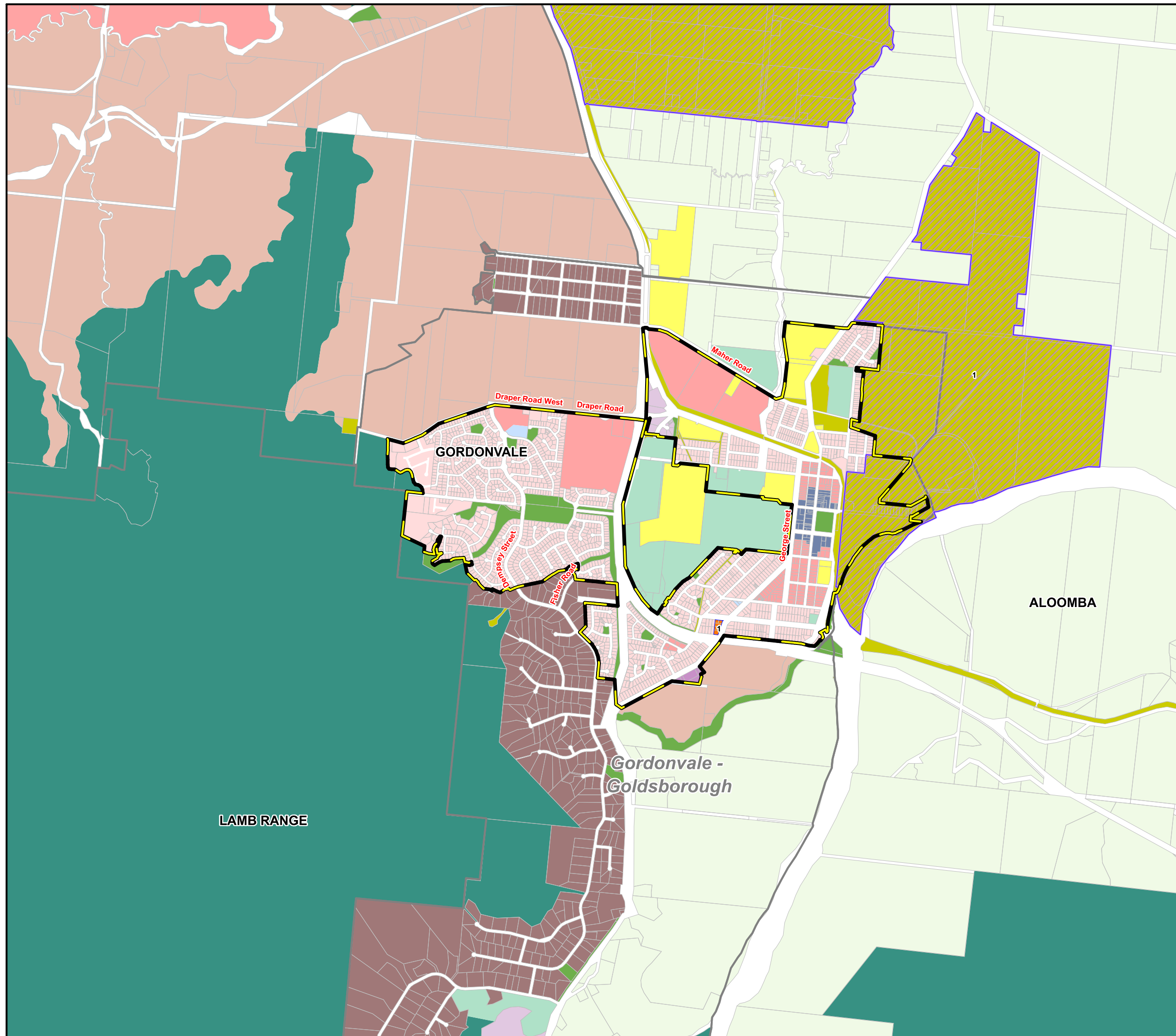
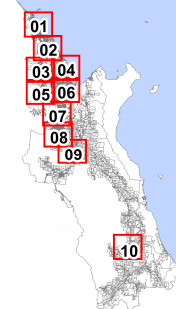
Cadastral Disclaimer:
 Despite Department of Natural Resources, Mines and Energy (DNRME)'s best efforts, DNRME makes no representations or warranties in relation to the information and to the extent permitted by law, excludes or limit all warranties relating to correctness, accuracy, reliability, completeness or currency and all liability for any direct, indirect and consequential costs, losses, damages and expenses incurred in any way (including but not limited to that arising from negligence) in connection with any use of or reliance on the information.
 © The State of Queensland - Dept of Natural Resources, Mines and Energy (DNRME) 2018



DATUM:
 Geocentric Datum of Australia 1994 (GDA94 - Zone 55)



Scale - 1:25,000 (@ A3)





PRIORITY INFRASTRUCTURE AREA

Priority Infrastructure Area Boundary (PIA)

PLANNING AREAS

Low Density Residential	Medium Impact Industry
Low-medium Density Residential	High Impact Industry
Medium Density Residential	Waterfront and Marine Industry
Tourist Accommodation	Tourism
Principal Centre	Community Facilities
Major Centre	Emerging Community Zone
District Centre	Mixed Use
Local Centre	Rural
Neighbourhood Centre	Rural Residential
Sport and Recreation	Special Purpose
Open Space	Specialised Centre
Environmental Management	Cairns Airport Land
Conservation	Strategic Port Land
Township	Cairns South State Development Area
Low Impact Industry	Tropical North State Development Area

GENERAL

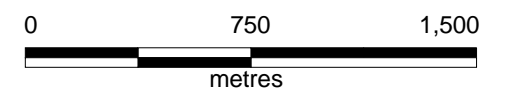
Property Boundary	LGIP Projection Area
Zone Precincts	

Disclaimer:
 While every care is taken to ensure the accuracy of this map, Cairns Regional Council makes no representations or warranties about its accuracy, reliability, completeness or suitability for any particular purpose and disclaims all responsibility and all liability (including without limitation liability in negligence) for all expenses, losses, damages (including indirect or consequential damage) and costs which might incur as a result of the data being inaccurate or incomplete in any way and for any reason.
 © Copyright Cairns Regional Council 2019

Cadastral Disclaimer:
 Despite Department of Natural Resources, Mines and Energy (DNRME)'s best efforts, DNRME makes no representations or warranties in relation to the information and to the extent permitted by law, excludes or limit all warranties relating to correctness, accuracy, reliability, completeness or currency and all liability for any direct, indirect and consequential costs, losses, damages and expenses incurred in any way (including but not limited to that arising from negligence) in connection with any use of or reliance on the information.
 © The State of Queensland - Dept of Natural Resources, Mines and Energy (DNRME) 2018



DATUM:
 Geocentric Datum
 of Australia 1994
 (GDA94 - Zone 55)



Scale - 1:25,000 (@ A3)

