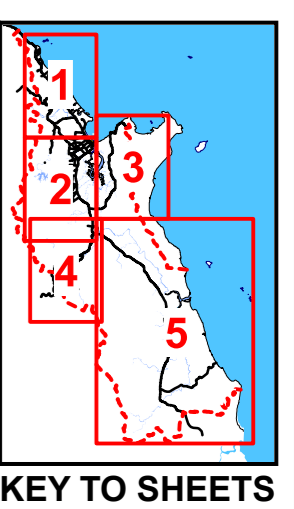
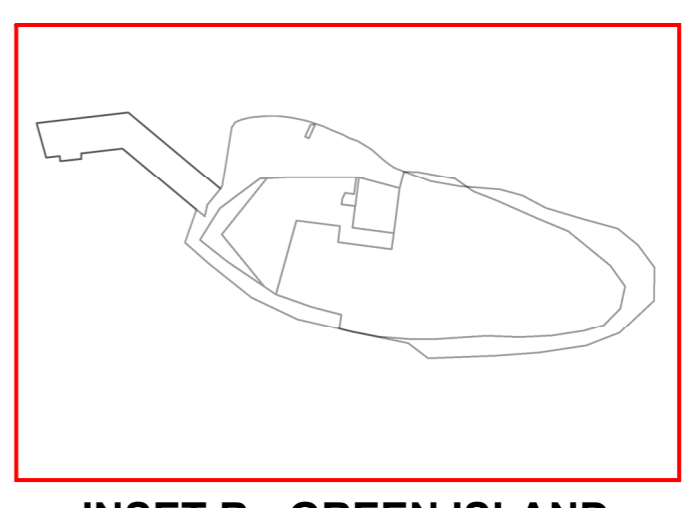
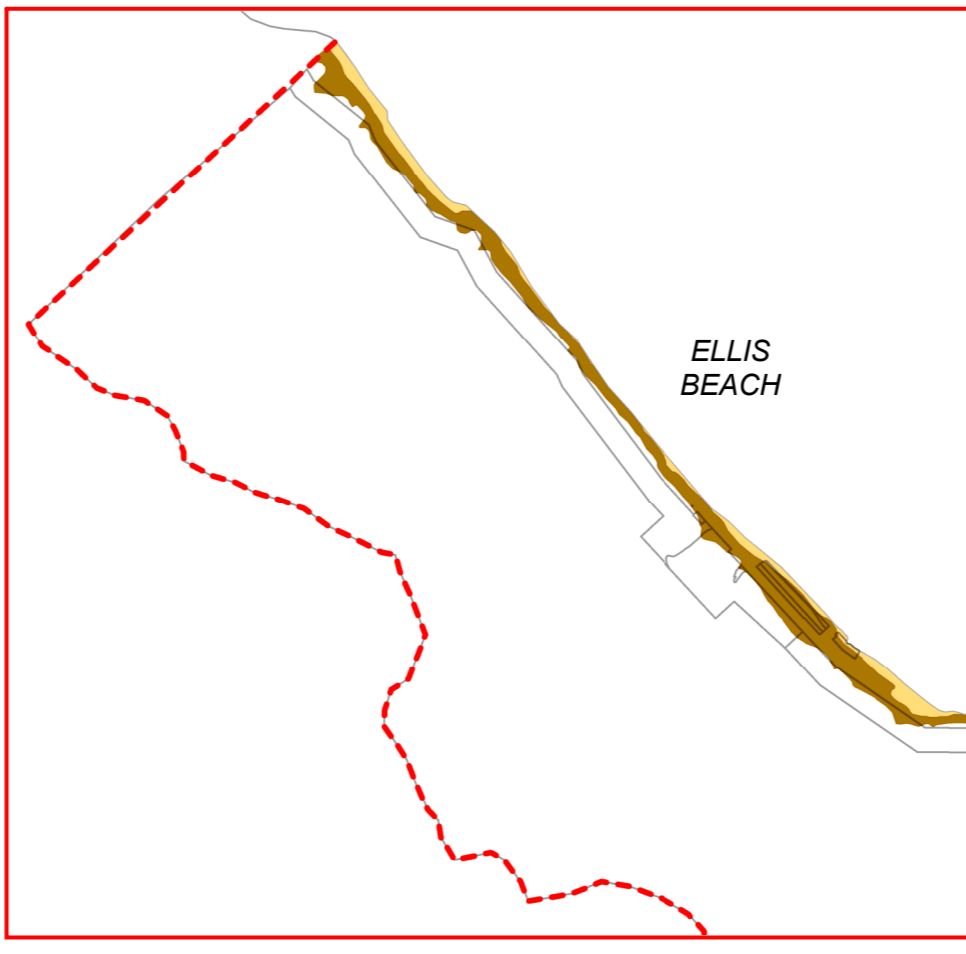
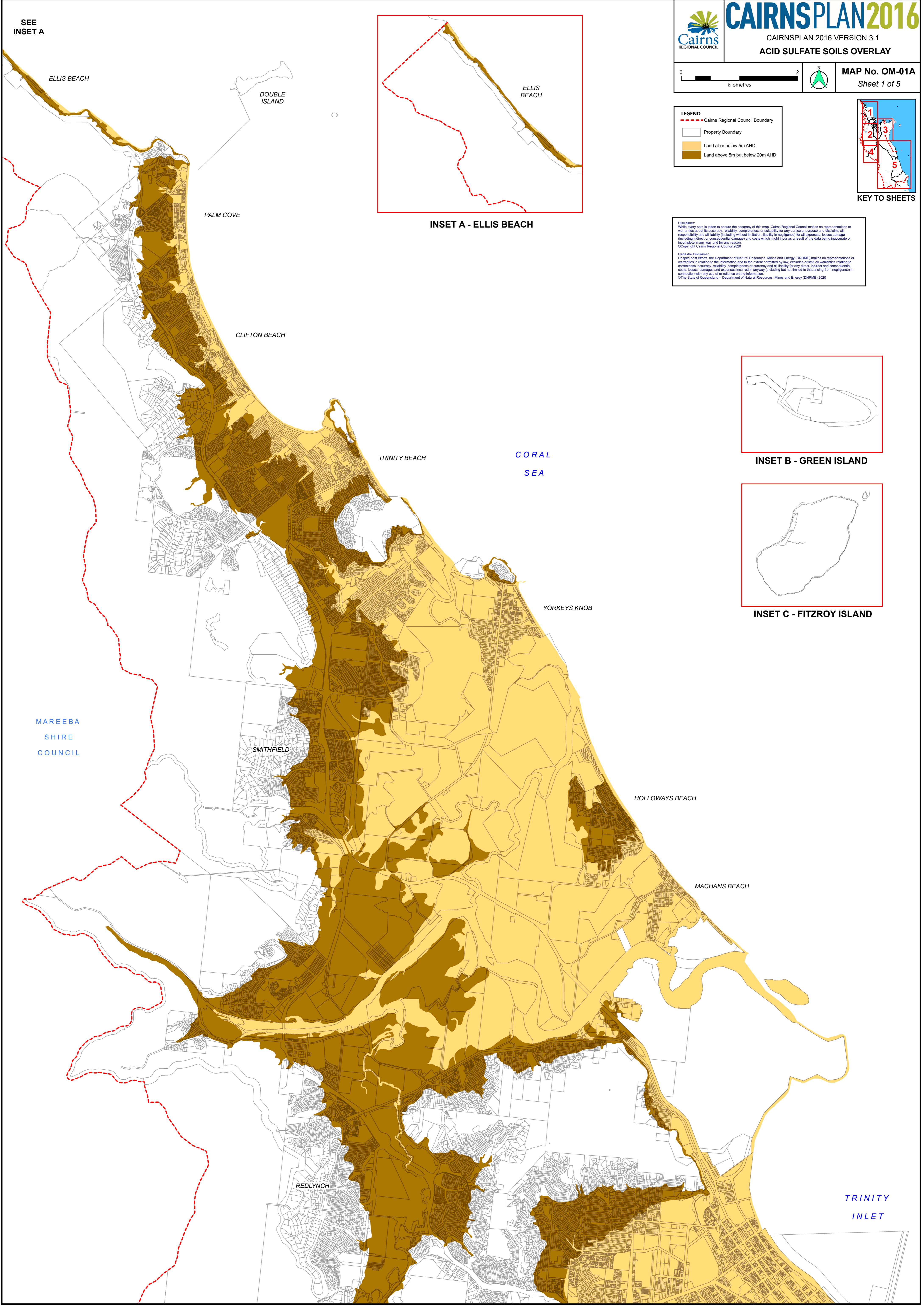


- LEGEND**
- Cairns Regional Council Boundary
 - Property Boundary
 - Land at or below 5m AHD
 - Land above 5m but below 20m AHD



Disclaimer:
 While every care is taken to ensure the accuracy of this map, Cairns Regional Council makes no representations or warranties about its accuracy, reliability, completeness or suitability for any particular purpose and disclaims all responsibility and all liability (including without limitation, liability in negligence) for all expenses, losses, damages (including indirect or consequential damage) and costs which might occur as a result of the data being inaccurate or incomplete in any way and for any reason.
 ©Copyright Cairns Regional Council 2020

Cadastral Disclaimer:
 Despite best efforts, the Department of Natural Resources, Mines and Energy (DNRM) makes no representations or warranties in relation to the information and to the extent permitted by law, excludes or limit all warranties relating to correctness, accuracy, reliability, completeness or currency and all liability for any direct, indirect and consequential costs, losses, damages and expenses incurred in anyway (including but not limited to that arising from negligence) in connection with any use of or reliance on the information.
 ©The State of Queensland - Department of Natural Resources, Mines and Energy (DNRM) 2020



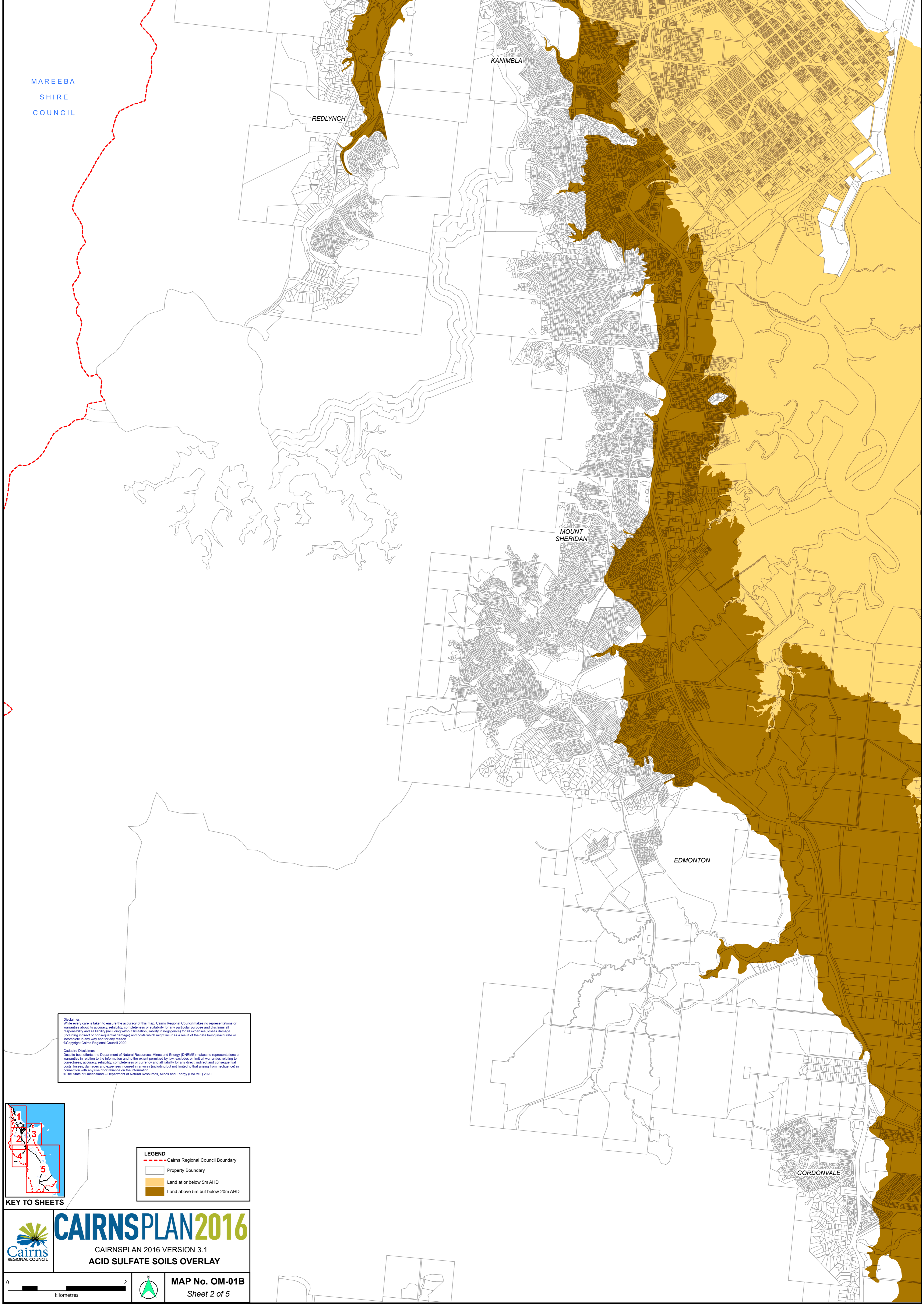
SEE
 INSET A

MAREEBA
 SHIRE
 COUNCIL

CORAL
 SEA

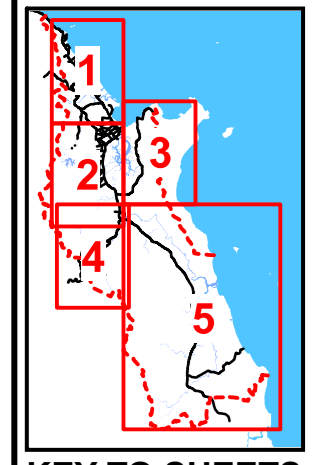
TRINITY
 INLET

MAREEBA
SHIRE
COUNCIL




Disclaimer:
While every care is taken to ensure the accuracy of this map, Cairns Regional Council makes no representations or warranties about its accuracy, reliability, completeness or suitability for any particular purpose and disclaims all responsibility and all liability (including without limitation, liability in negligence) for all expenses, losses, damage (including indirect or consequential damage) and costs which might incur as a result of the data being inaccurate or incomplete in any way and for any reason.
©Copyright Cairns Regional Council 2020

Cadastral Disclaimer:
Despite best efforts, the Department of Natural Resources, Mines and Energy (DNRM) makes no representations or warranties in relation to the information and to the extent permitted by law, excludes or limits all warranties relating to correctness, accuracy, reliability, completeness or currency and all liability for any direct, indirect and consequential costs, losses, damages and expenses incurred in anyway (including but not limited to that arising from negligence) in connection with any use of or reliance on the information.
©The State of Queensland - Department of Natural Resources, Mines and Energy (DNRM) 2020




KEY TO SHEETS

LEGEND	
	Cairns Regional Council Boundary
	Property Boundary
	Land at or below 5m AHD
	Land above 5m but below 20m AHD

 **CAIRNSPLAN2016**
CAIRNSPLAN 2016 VERSION 3.1
ACID SULFATE SOILS OVERLAY

0 2
kilometres

 **MAP No. OM-01B**
Sheet 2 of 5

TRINITY
INLET





EAST
TRINITY

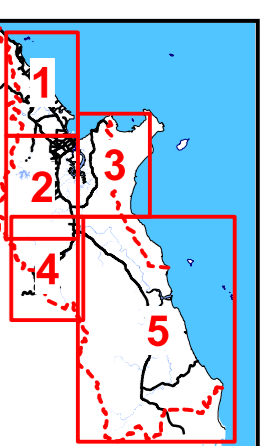
YARRABAH
SHIRE
COUNCIL

CORAL
SEA


Disclaimer:
While every care is taken to ensure the accuracy of this map, Cairns Regional Council makes no representations or warranties about its accuracy, reliability, completeness or suitability for any particular purpose and disclaims all responsibility and all liability (including without limitation, liability in negligence) for all expenses, losses, damage (including indirect or consequential damage) and costs which might incur as a result of the data being inaccurate or incomplete in any way and for any reason.
©Copyright Cairns Regional Council 2020

Cadastral Disclaimer:
Despite best efforts, the Department of Natural Resources, Mines and Energy (DNRM) makes no representations or warranties in relation to the information and to the extent permitted by law, excludes or limits all warranties relating to correctness, accuracy, reliability, completeness or currency and all liability for any direct, indirect and consequential costs, losses, damages and expenses incurred in anyway (including but not limited to that arising from negligence) in connection with any use of or reliance on the information.
©The State of Queensland - Department of Natural Resources, Mines and Energy (DNRM) 2020

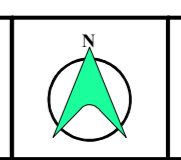
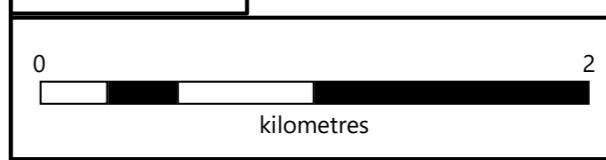
- LEGEND**
-  Cairns Regional Council Boundary
 -  Property Boundary
 -  Land at or below 5m AHD
 -  Land above 5m but below 20m AHD



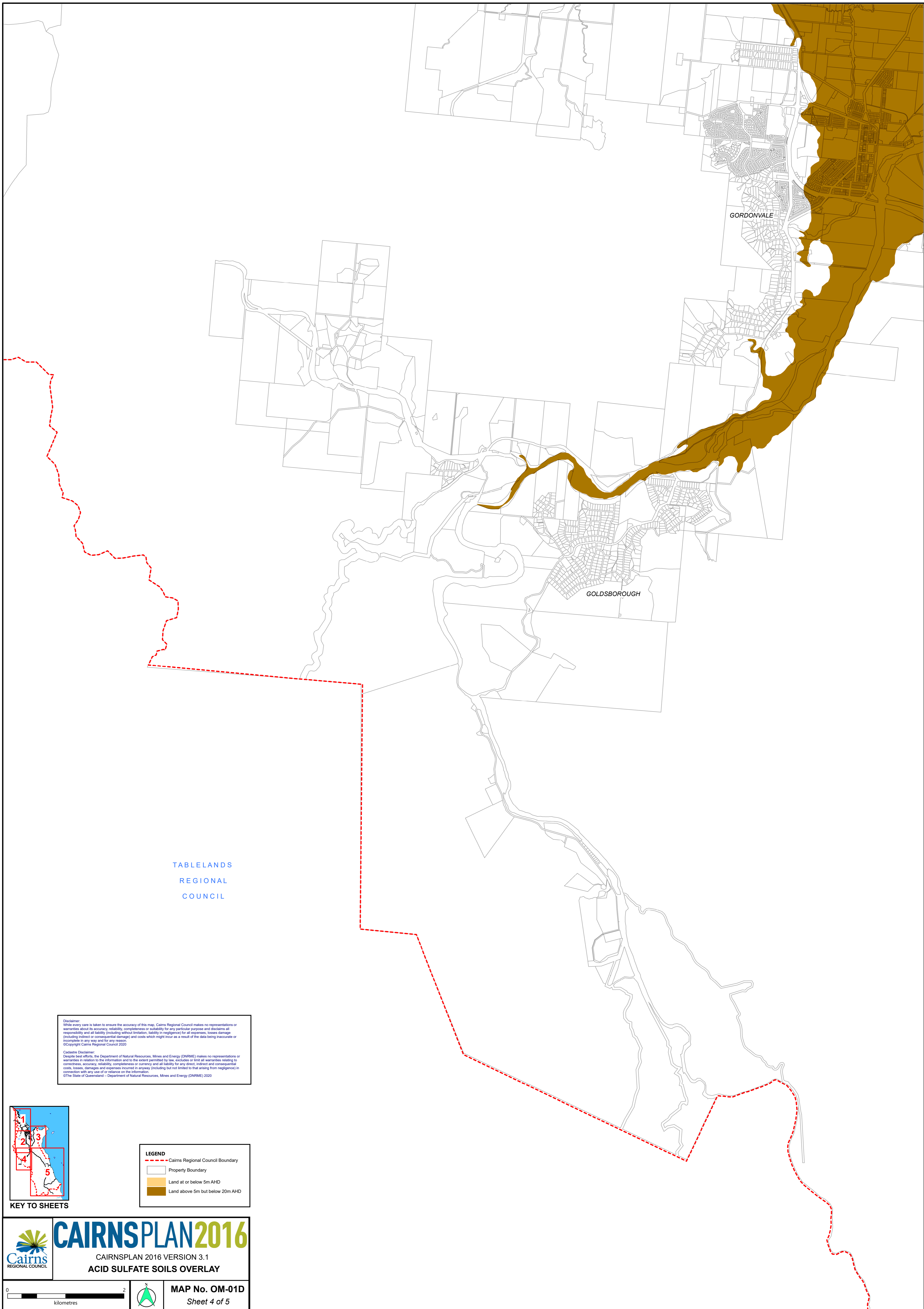
KEY TO SHEETS



CAIRNSPLAN2016
CAIRNSPLAN 2016 VERSION 3.1
ACID SULFATE SOILS OVERLAY



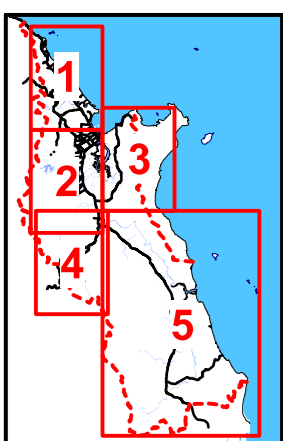
MAP No. OM-01C
Sheet 3 of 5



TABLELANDS
REGIONAL
COUNCIL

Disclaimer:
While every care is taken to ensure the accuracy of this map, Cairns Regional Council makes no representations or warranties about its accuracy, reliability, completeness or suitability for any particular purpose and disclaims all responsibility and all liability (including without limitation, liability in negligence) for all expenses, losses, damage (including indirect or consequential damage) and costs which might occur as a result of the data being inaccurate or incomplete in any way and for any reason.
©Copyright Cairns Regional Council 2020.

Cadastral Disclaimer:
Despite best efforts, the Department of Natural Resources, Mines and Energy (DNRM) makes no representations or warranties in relation to the information and to the extent permitted by law, excludes or limits all warranties relating to correctness, accuracy, reliability, completeness or currency and all liability for any direct, indirect and consequential costs, losses, damages and expenses incurred in anyway (including but not limited to that arising from negligence) in connection with any use of or reliance on the information.
©The State of Queensland - Department of Natural Resources, Mines and Energy (DNRM) 2020

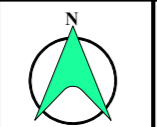
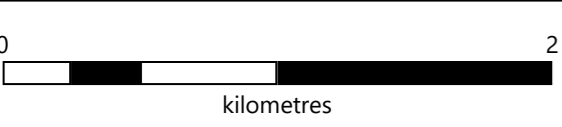


KEY TO SHEETS

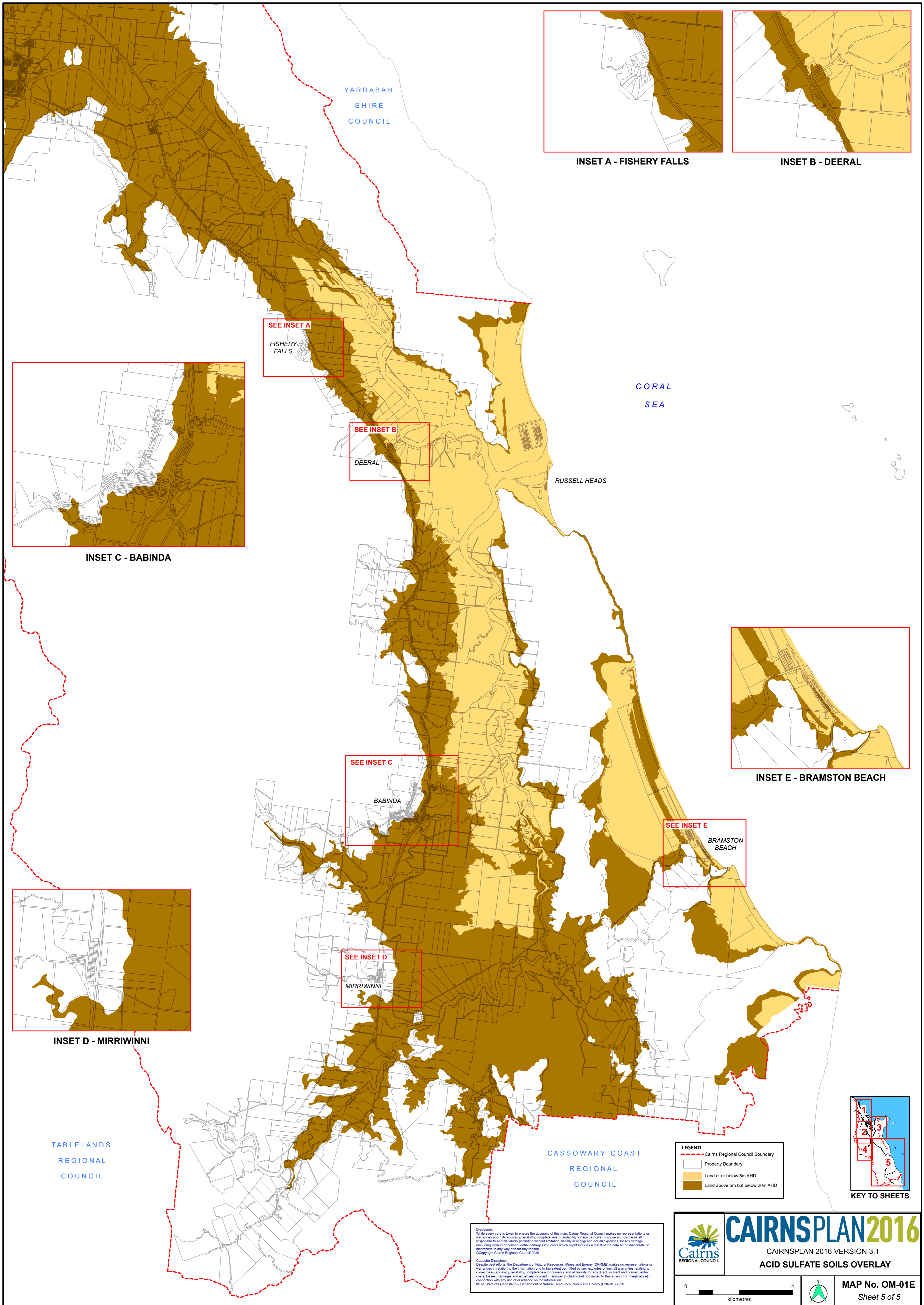
LEGEND	
	Cairns Regional Council Boundary
	Property Boundary
	Land at or below 5m AHD
	Land above 5m but below 20m AHD

CAIRNSPLAN2016

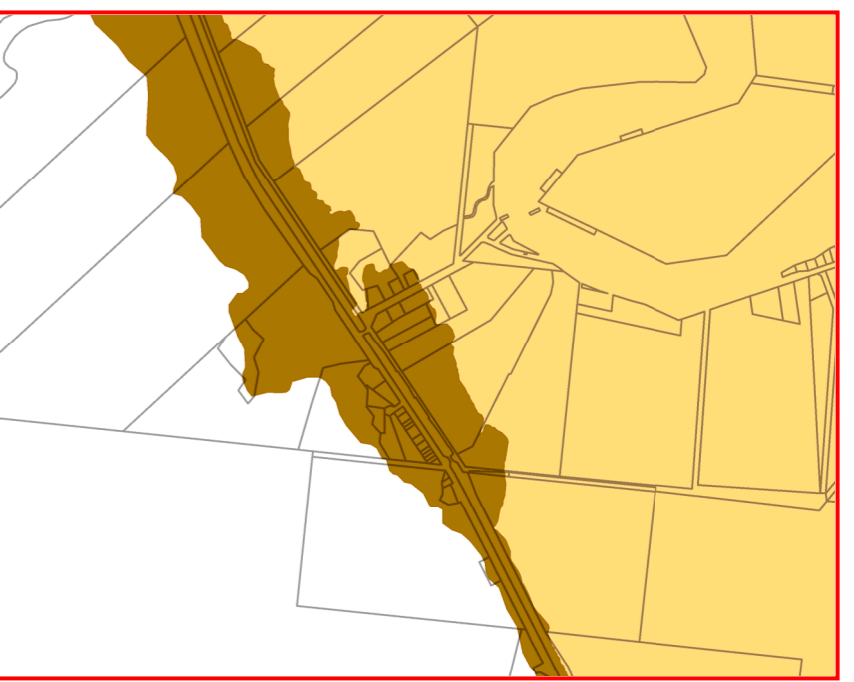
CAIRNSPLAN 2016 VERSION 3.1
ACID SULFATE SOILS OVERLAY



MAP No. OM-01D
Sheet 4 of 5



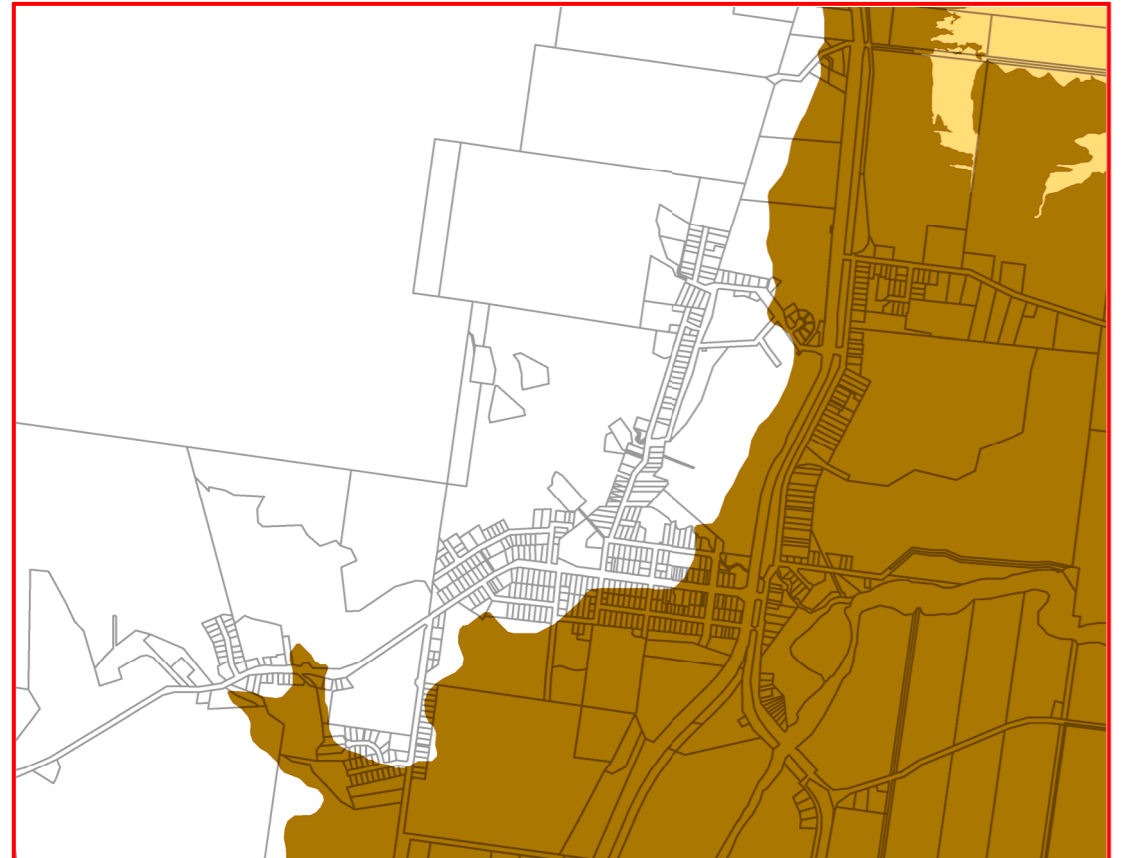
INSET A - FISHERY FALLS



INSET B - DEERAL

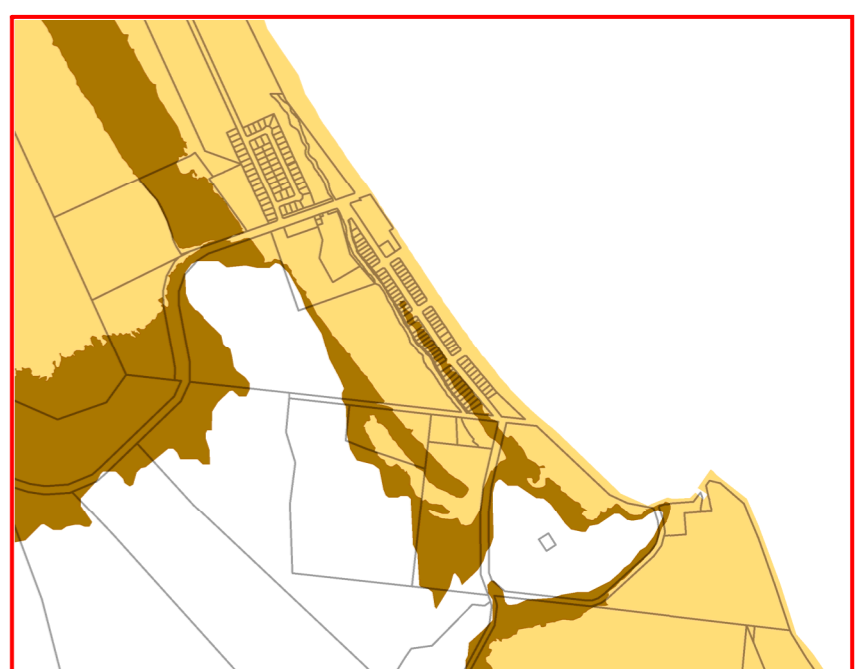
SEE INSET A
FISHERY FALLS

SEE INSET B
DEERAL



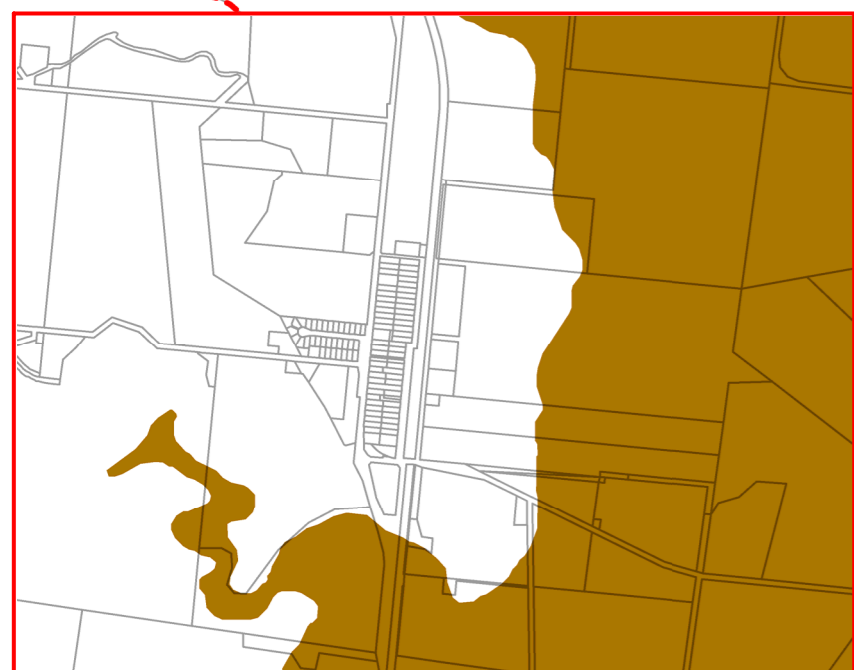
INSET C - BABINDA

SEE INSET C
BABINDA



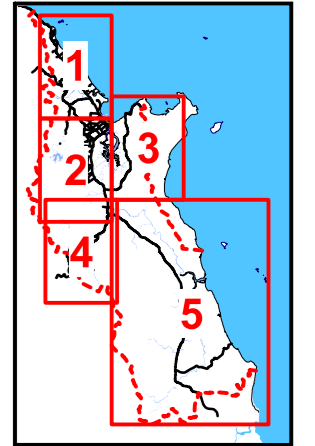
INSET E - BRAMSTON BEACH

SEE INSET E
BRAMSTON BEACH



INSET D - MIRRIWINNI

SEE INSET D
MIRRIWINNI



KEY TO SHEETS

LEGEND

- - - Cairns Regional Council Boundary
- Property Boundary
- Land at or below 5m AHD
- Land above 5m but below 20m AHD

Disclaimer:
While every care is taken to ensure the accuracy of this map, Cairns Regional Council makes no representations or warranties about its accuracy, reliability, completeness or suitability for any particular purpose and disclaims all responsibility and all liability (including without limitation, liability in negligence) for all expenses, losses, damage (including indirect or consequential damage) and costs which might incur as a result of the data being inaccurate or incomplete in any way and for any reason.
©Copyright Cairns Regional Council 2020

Cadastre Disclaimer:
Despite best efforts, the Department of Natural Resources, Mines and Energy (DNRM) makes no representations or warranties in relation to the information and to the extent permitted by law, excludes or limit all warranties relating to correctness, accuracy, reliability, completeness or currency and all liability for any direct, indirect and consequential costs, losses, damages and expenses incurred in anyway (including but not limited to that arising from negligence) in connection with any use of or reliance on the information.
©The State of Queensland - Department of Natural Resources, Mines and Energy (DNRM) 2020

CAIRNSPLAN2016

CAIRNSPLAN 2016 VERSION 3.1

ACID SULFATE SOILS OVERLAY

0 4
kilometres

MAP No. OM-01E

Sheet 5 of 5

TABLELANDS
REGIONAL
COUNCIL

CASSOWARY COAST
REGIONAL
COUNCIL

YARRABAH
SHIRE
COUNCIL

CORAL
SEA