

DOUGLAS SHIRE COUNCIL

Ellis Beach
Double Island
Palm Cove
Trinity Beach

Disclaimer:
While every care is taken to ensure the accuracy of this map, Cairns Regional Council makes no representations or warranties about its accuracy, reliability, completeness or suitability for any particular purpose and disclaims all responsibility and all liability (including without limitation, liability in negligence) for all expenses, losses, damage (including indirect or consequential damage) and costs which might incur as a result of the data being inaccurate or incomplete in any way and for any reason.
©Copyright Cairns Regional Council 2020
Cadastral Disclaimer:
Despite Department of Natural Resources and Mines (DNRM)'s best efforts, DNRM makes no representations or warranties in relation to the information and to the extent permitted by law, excludes or limit all warranties relating to correctness, accuracy, reliability, completeness or currency and all liability for any direct, indirect and consequential costs, losses, damages and expenses incurred in anyway (including but not limited to that arising from negligence) in connection with any use of or reliance on the information.
©The State of Queensland - Department of Natural Resources, Mines and Energy (DNRM) 2020

LEGEND

Cairns Regional Council Boundary	Urban
Principal Activity Centre	Future urban
Major Activity Centre	Rural residential
District Activity Centre	Rural
	Environmental
	Southern Growth Corridor
	State Development Areas

MAREEBA SHIRE COUNCIL

Redlynch
Earlville

CAIRNS

YARRABAH SHIRE COUNCIL

Fitzroy Island

CORAL SEA

TABLELANDS REGIONAL COUNCIL

Edmonton

Gordonvale

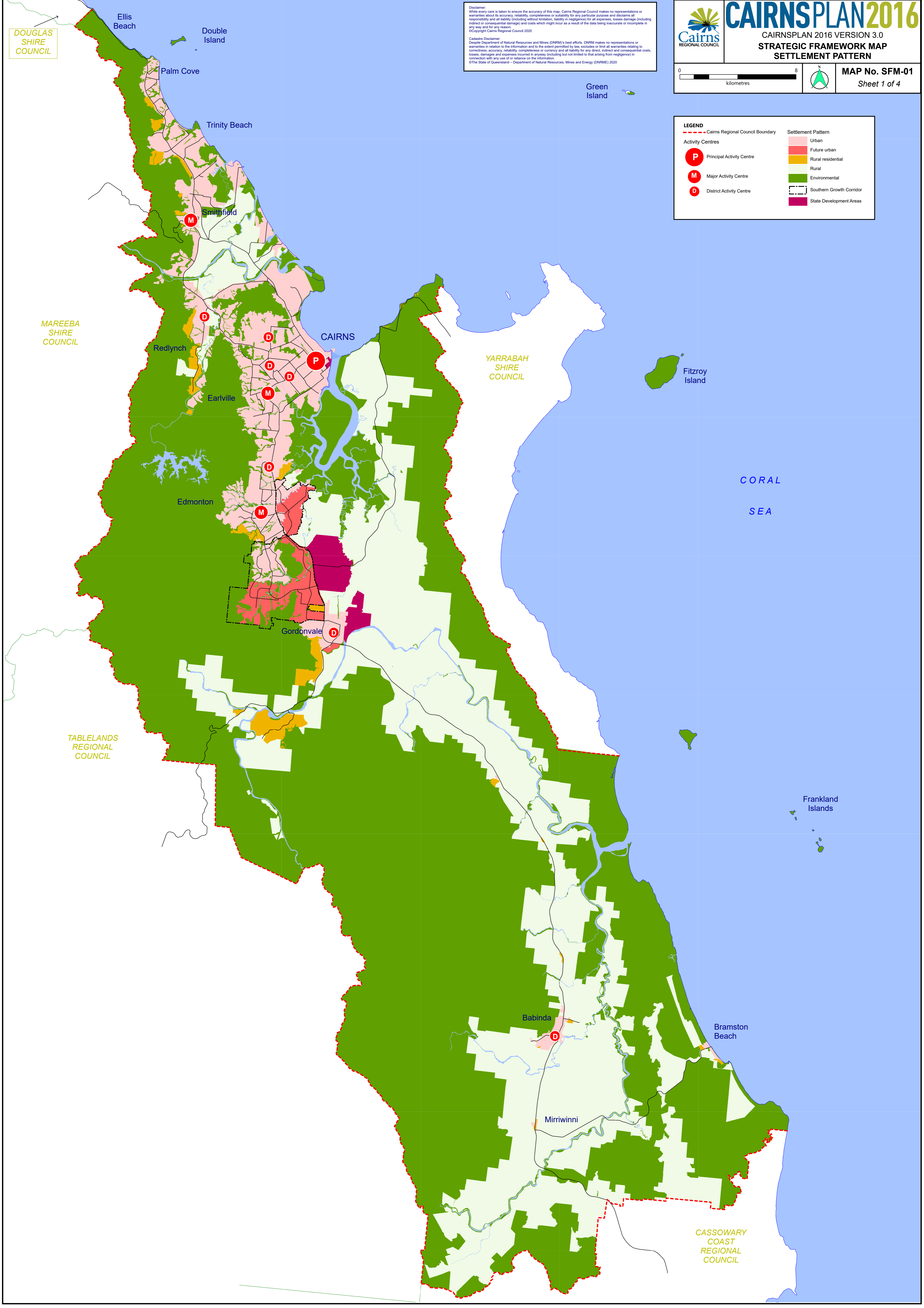
Frankland Islands

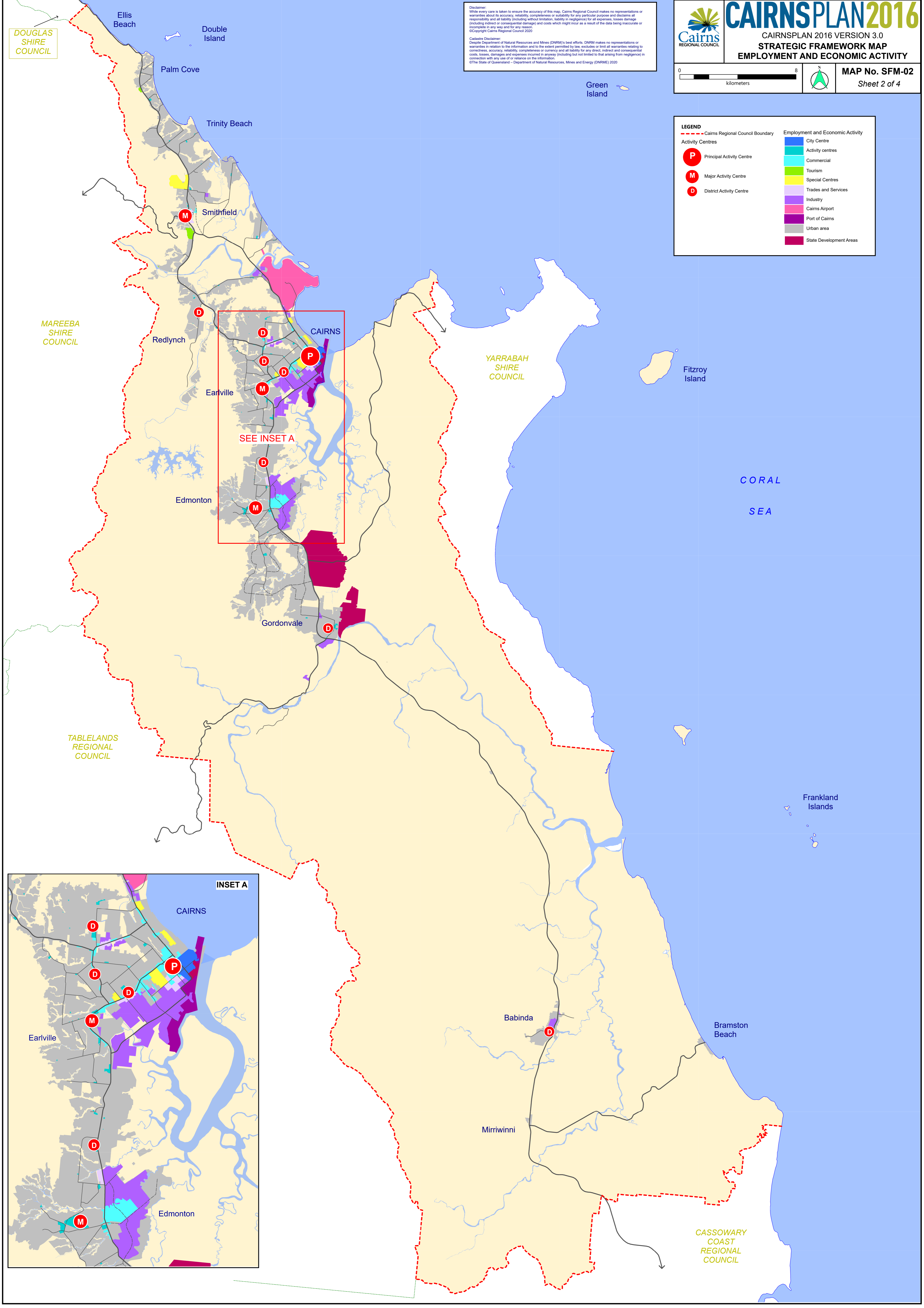
Babinda

Bramston Beach

Mirriwinni

CASSOWARY COAST REGIONAL COUNCIL



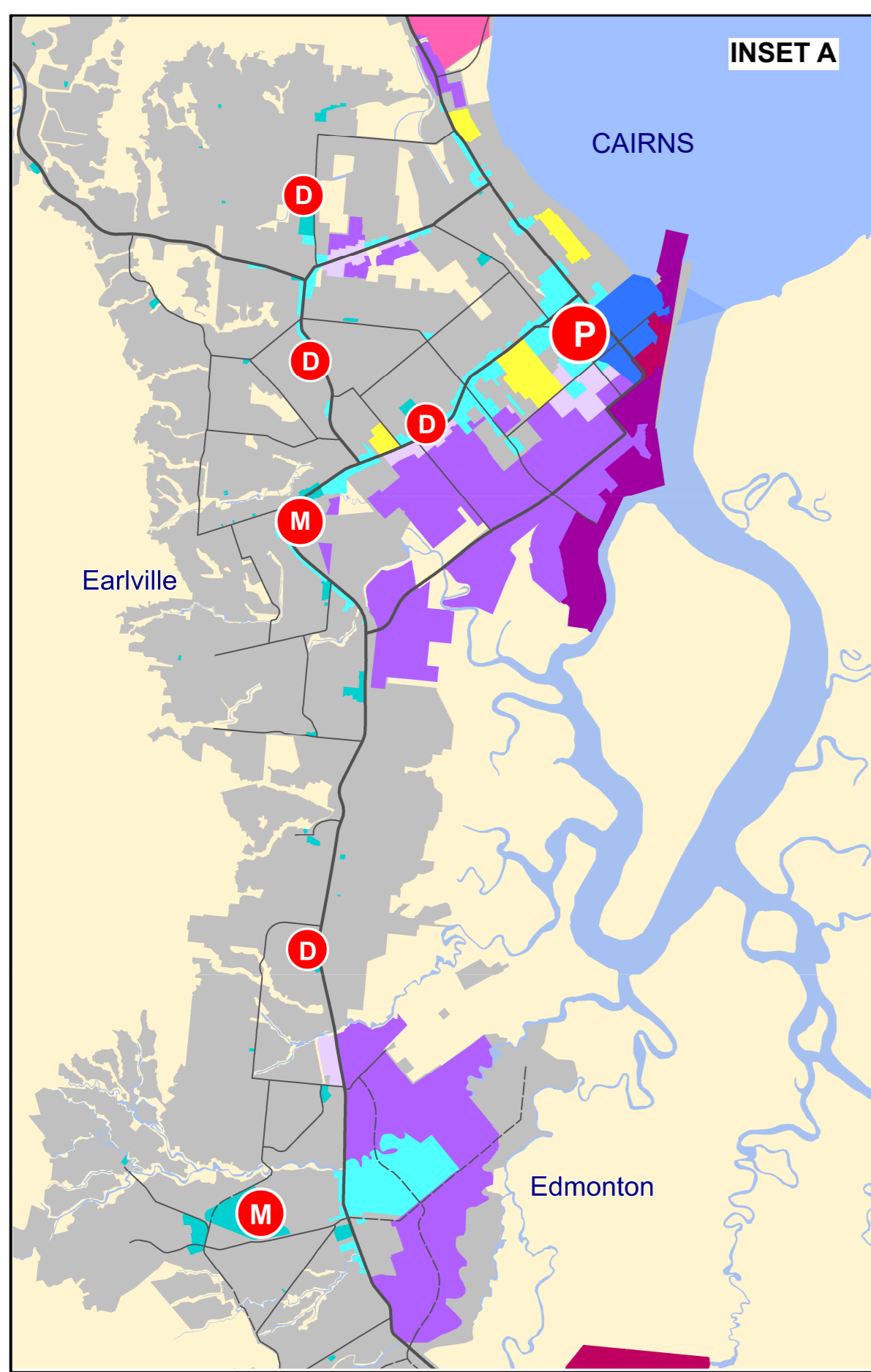


Disclaimer:
 While every care is taken to ensure the accuracy of this map, Cairns Regional Council makes no representations or warranties about its accuracy, reliability, completeness or suitability for any particular purpose and disclaims all responsibility and all liability (including without limitation, liability in negligence) for all expenses, losses, damage (including indirect or consequential damage) and costs which might incur as a result of the data being inaccurate or incomplete in any way and for any reason.
 ©Copyright Cairns Regional Council 2020
Cairns Disclaimer:
 Despite Department of Natural Resources and Mines (DNRM)'s best efforts, DNRM makes no representations or warranties in relation to the information and to the extent permitted by law, excludes or limit all warranties relating to correctness, accuracy, reliability, completeness or currency and all liability for any direct, indirect and consequential costs, losses, damages and expenses incurred in anyway (including but not limited to that arising from negligence) in connection with any use of or reliance on the information.
 ©The State of Queensland – Department of Natural Resources, Mines and Energy (DNRM) 2020

LEGEND

Cairns Regional Council Boundary	City Centre
Activity Centres	Activity centres
Principal Activity Centre	Commercial
Major Activity Centre	Tourism
District Activity Centre	Special Centres
	Trades and Services
	Industry
	Cairns Airport
	Port of Cairns
	Urban area
	State Development Areas

SEE INSET A



DOUGLAS SHIRE COUNCIL

Ellis Beach
Double Island

Palm Cove

Trinity Beach

Smithfield

CAIRNS

Redlynch

Earlville

Edmonton

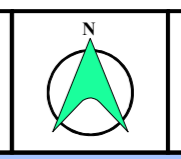
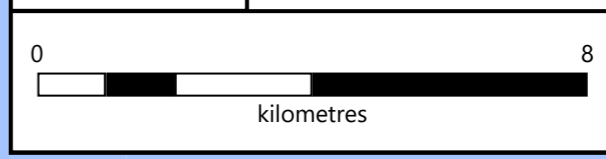
Gordonvale

Disclaimer:
While every care is taken to ensure the accuracy of this map, Cairns Regional Council makes no representations or warranties about its accuracy, reliability, completeness or suitability for any particular purpose and disclaims all responsibility and all liability (including without limitation, liability in negligence) for all expenses, losses, damage (including indirect or consequential damage) and costs which might incur as a result of the data being inaccurate or incomplete in any way and for any reason.
©Copyright Cairns Regional Council 2020
Cairns Regional Council
Despite Department of Natural Resources and Mines (DNRM)'s best efforts, DNRM makes no representations or warranties in relation to the information and to the extent permitted by law, excludes or limit all warranties relating to correctness, accuracy, reliability, completeness or currency and all liability for any direct, indirect and consequential costs, losses, damages and expenses incurred in anyway (including but not limited to that arising from negligence) in connection with any use of or reliance on the information.
©The State of Queensland - Department of Natural Resources, Mines and Energy (DNRM) 2020



CAIRNSPLAN 2016

CAIRNSPLAN 2016 VERSION 3.0
STRATEGIC FRAMEWORK MAP
REGIONAL INFRASTRUCTURE



MAP No. SFM-03
Sheet 3 of 4

LEGEND

- Public transport station
- Public transport route
- Cairns Regional Council Boundary
- Major road
- Other road
- Cane tramline
- State Railway
- Electricity structure feeder 275KV
- Electricity structure feeder 110-132KV
- Urban area
- State Development Areas

MAREEBA SHIRE COUNCIL

YARRABAH SHIRE COUNCIL

Fitzroy Island

CORAL SEA

TABLELANDS REGIONAL COUNCIL

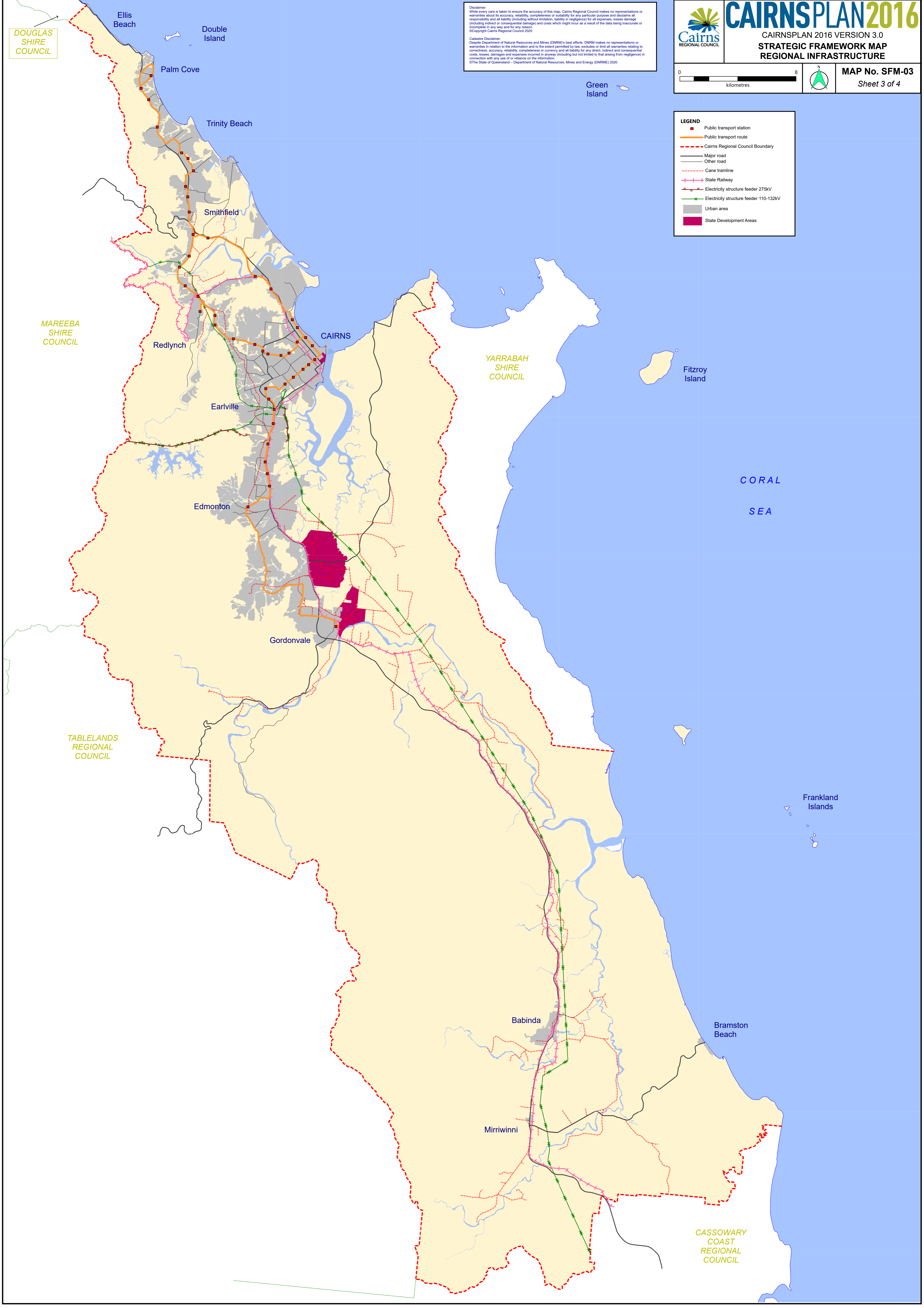
Frankland Islands

Bramston Beach

Babinda

Mirriwinni

CASSOWARY COAST REGIONAL COUNCIL



DOUGLAS
SHIRE
COUNCIL

Ellis Beach
Double Island

Palm Cove

Trinity Beach

Smithfield

Redlynch

Earlville

Edmonton

Gordonvale

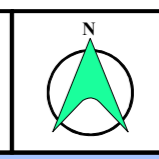
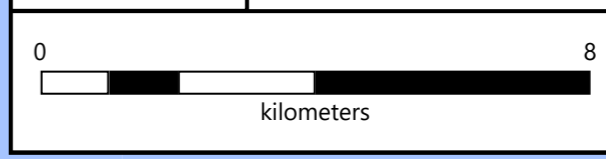
Tablelands

Disclaimer:
While every care is taken to ensure the accuracy of this map, Cairns Regional Council makes no representations or warranties about its accuracy, reliability, completeness or suitability for any particular purpose and disclaims all responsibility and all liability (including without limitation, liability in negligence) for all expenses, losses, damage (including indirect or consequential damage) and costs which might incur as a result of the data being inaccurate or incomplete in any way and for any reason.
©Copyright Cairns Regional Council 2020
Cairns Regional Council
Despite Department of Natural Resources and Mines (DNRM)'s best efforts, DNRM makes no representations or warranties in relation to the information and to the extent permitted by law, excludes or limit all warranties relating to correctness, accuracy, reliability, completeness or currency and all liability for any direct, indirect and consequential costs, losses, damages and expenses incurred in anyway (including but not limited to that arising from negligence) in connection with any use of or reliance on the information.
©The State of Queensland - Department of Natural Resources, Mines and Energy (DNRM) 2020



CAIRNSPLAN 2016

CAIRNSPLAN 2016 VERSION 3.0
WET TROPICS OF QUEENSLAND WORLD
HERITAGE AREA



MAP No. SFM-04
Sheet 4 of 4

LEGEND

- Major Roads
- Other Roads
- Cairns Regional Council Boundary
- Wet Tropics of Queensland World Heritage Area
- Urban area
- State Development Areas

MAREEBA
SHIRE
COUNCIL

YARRABAH
SHIRE
COUNCIL

Fitzroy Island

CORAL
SEA

TABLELANDS
REGIONAL
COUNCIL

Frankland Islands

Bramston Beach

Babinda

Mirrini

CASSOWARY
COAST
REGIONAL
COUNCIL

