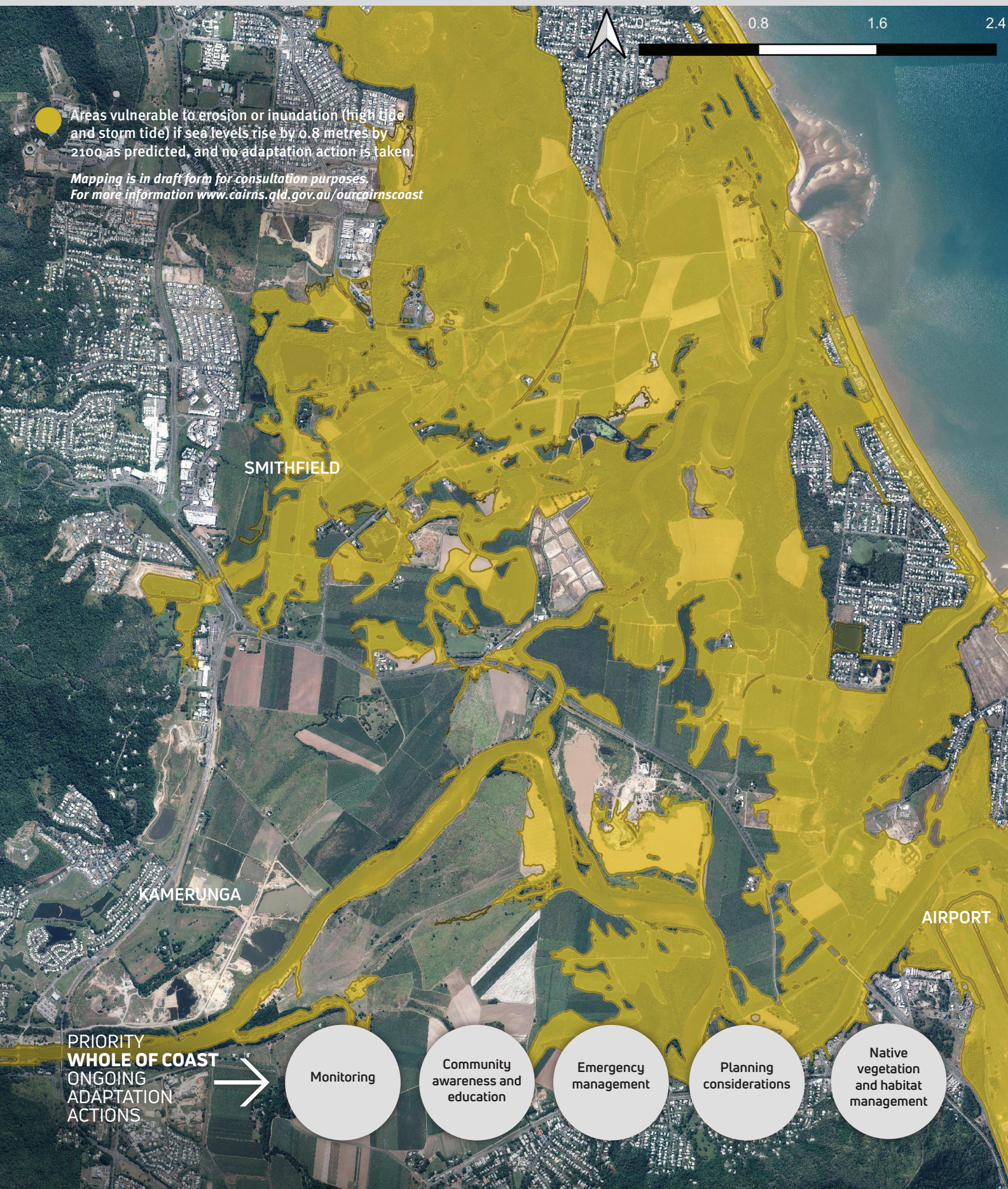


BARRON + KAMERUNGA

Barron and Kamerunga are outer suburbs of Cairns CBD around the Barron River. Key features of these semi-rural low-density residential include the Kamerunga Nature Reserve, Lake Placid and Barron Gorge.



BARRON + KAMERUNGA

WHAT THE COMMUNITY VALUES

- Culturally significant sites
- Traditional Custodian values
- Farmland
- Green belt separating urban areas
- Barron River delta

COMMUNITY ADAPTATION PRIORITIES

- Modify existing infrastructure to be resilient to coastal hazards
- Planning considerations to retain rural zoning
- Protect vegetation along banks of Barron River and foreshore

COMMUNITY ASSETS AT RISK BY 2100

- Community assets (e.g. Cattana Wetlands and Harley Street North Park)
- Environmental areas (e.g. Kamerunga Conservation Park and Stoney Street Environmental Reserve)
- Various roads (e.g. Kamerunga Road, Captain Cook Highway and Yorkeys Knob Road)
- Servicing (e.g. water pipes)

- The Barron River delta has changed since the mouth switched 1.5km to the north in 1939 from its former position adjacent to Ellie Point
- The area is predominately low-lying and is vulnerable to inundation

Local Adaptation Pathways to respond to coastal hazards

(For community assets, based on monitored sea level rise)

TIMING BASED ON SEA LEVEL RISE

SHORT TERM	MED TERM	LONG TERM
0-0.3m	0.3-0.6m	>0.6m

BEACH & FORESHORE MANAGEMENT

- Existing public infrastructure that needs updating or new infrastructure to be installed should be resilient to coastal hazards
- Relocate existing community assets in coastal hazard areas that need updating or locate new assets outside these areas
- Manually change land or road levels where are risk of coastal inundation and this is important to the community e.g. boat ramp car park



MODIFY INFRASTRUCTURE AND HAZARD RESILIENT DESIGN

- Levee or bund wall around the waste water treatment plant to reduce exposure to coastal hazards
- A training wall to maintain the position of the Barron River channel
- A levee may be required to prevent low-lying land within Barron from becoming inundated



ACCEPT THE RISK AND EMBRACE COASTAL PROCESSES

- Progressively review or relocate infrastructure as inundation encroaches on assets, particularly for low-lying rural areas

