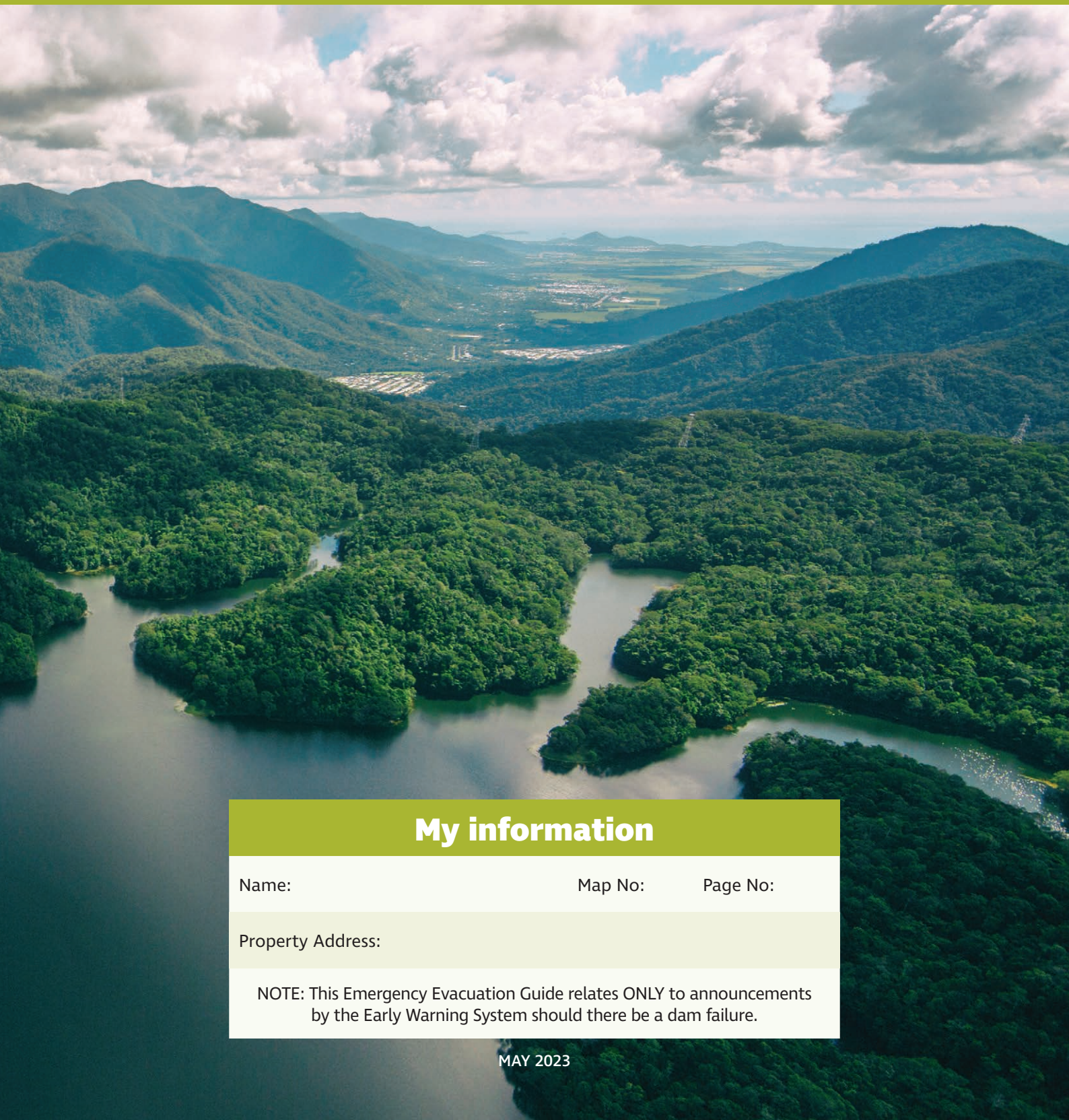


Copperlode Falls Dam Emergency Evacuation Guide

Know where to go



My information

Name:

Map No:

Page No:

Property Address:

NOTE: This Emergency Evacuation Guide relates ONLY to announcements by the Early Warning System should there be a dam failure.



Copperlode Falls Dam Emergency Action Plan

In the extremely unlikely event that Copperlode Falls Dam (the dam) fails, people living in the Redlynch Valley and adjoining areas must be prepared and know what to do.

In an emergency, everyone has a responsibility for their own safety.

This evacuation guide focuses on an unexpected and imminent dam failure. It explains the early warning system and outlines the actions residents must take if they receive and hear these warnings. In the event of an anticipated dam failure that is not imminent, residents and people within the area will be provided with more time to act.

Residents and business owners should use this guide to prepare, share and practise their emergency evacuation plan by:

- Learning about the early warning system and the siren sounds
- Finding out if you live in a 'red zone' immediately downstream from the dam
- Knowing your nearest evacuation assembly point
- Plotting the fastest clear route to the evacuation assembly point
- Understanding that you must walk (not drive) in the event of an evacuation.

Copperlode Falls Dam is the main supply of water for the Cairns Region. As the owner of the dam, Cairns Regional Council has an Emergency Action Plan (EAP) that explains the roles, responsibilities and communication procedures used in a dam-related emergency. The EAP identifies areas and properties most at risk, described as the 'red zone' in this guide, and how residents would be notified of a dam-related emergency. The EAP is available on Council's website: www.cairns.qld.gov.au/copperlodeEAP



The stages of evacuation

Activation of Early Warning System

The Early Warning System is activated in the extremely unlikely event of a dam failure. The system uses the latest technology to deliver real-time alerts to residents and visitors via text message, phone calls, email and several **Outdoor Warning Stations** (sirens) positioned throughout the Redlynch Valley from Crystal Cascades to Brinsmead. These stations transmit automated warning signals and allow pre-recorded voice messages via speakers mounted to towers.

Siren sounds

The siren sound is different to a standard emergency warning signal. It has a unique *whoop whoop* sound and transmits a message specific to a dam failure.

In the extremely unlikely event of a dam failure, the siren will sound followed by the recorded voice message:



**EMERGENCY – EMERGENCY – EVACUATE NOW –
MOVE TO HIGHER GROUND**

On hearing this warning, all residents and visitors in the area must implement their emergency evacuation plan immediately.

You can listen to the siren tone and recorded voice message on Council's website: www.cairns.qld.gov.au/copperlodeEAP

Additional Warnings

Cairns Regional Council uses several text message alert systems in the case of an emergency. 'Cairns Alert' is Council's communication platform to issue alerts and warnings about local disasters and emergency events via SMS and email. These alerts are official communication from the Local Disaster Management Group. To send these alerts, details of ratepayers located within the red zone are obtained from the Council rates database. Residents (and particularly rental tenants) can opt into the service. Warning SMS messages may also be received via the National Emergency Alert System. You do not need to subscribe to this service. Council also manages the Cairns Disaster Dashboard which provides disaster news and information via the internet. Visit: disaster.cairns.qld.gov.au

Important note

Evacuation warnings will only occur if the Copperlode Falls Dam wall has failed without warning, or if it is highly likely there will be a dam failure in the near future.





During an evacuation

Take immediate action

If you are located in the red zone and hear a notice to evacuate you must **leave immediately**. Make your way **on foot** to your nearest assembly point (marked with a star on the maps on pages 6–16) **WITHOUT DRIVING OR CONGESTING EVACUATION ROUTES – DO NOT DRIVE**.



After an evacuation

Stay at your high ground location until you are advised it is safe to leave. Keep listening to official channels as it may not be safe to return to your property. More information will be broadcast during and after an evacuation through these channels: local radio, TV, websites, social media and SMS messages.

Emergency services will issue advice and instructions. Call for help if you need it (see **Emergency Contacts** back page). Keep out of flooded areas even if you know them well.





Be prepared and know where to go

We all have an important role to play in being prepared to act during an emergency and ensuring our community is safe. Discussing and sharing this plan with your family, household members, or business associates is essential for everyone's safety.



Mark your evacuation route now

Use the following maps to find out if your home or business is in the red zone or close to it.

The stars on the map indicate the assembly points.

You need to find your closest evacuation assembly point which is outside the red zone. Emergency services can assist at these assembly points, after the immediate threat has passed.

Following these steps now will save you time should the early warning system be activated and the sirens and evacuation message sound.

STEP 1

Find your property

- Use maps 1-10 to find your property. Mark it on the map and identify if your property is in the red zone.

STEP 2

If your property is in the red zone

- You need to find your nearest assembly point. This point will be in a higher area to your property. The stars on the map indicate the assembly points.
- Draw a route on the map from your home to your nearest assembly point.
- Make sure that the evacuation route to your assembly point is clear of potential hazards, including streams.
- Practise walking this route.
- Identify an alternative/secondary location and evacuation route in case the first becomes inaccessible. Mark this secondary route on the map too.

STEP 3

If your property is not in the red zone but close to it

- Consider where you will go if you need to go to higher ground further away from the red zone, and mark this on the map.
- Draw a route on the map to take from your home to the safe location.
- Make sure the route to this spot is clear of potential hazards, including streams or waterways.
- Practise walking this route.

Redlynch Valley Map

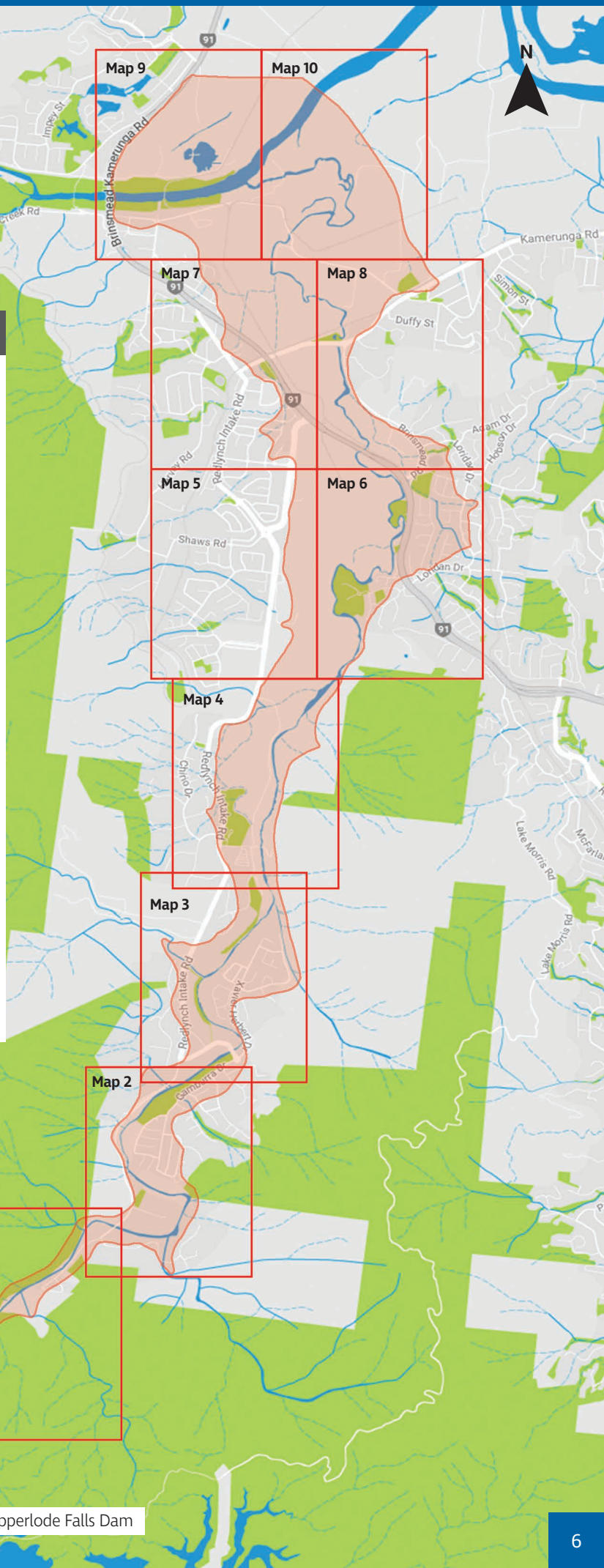
Affected Area Maps

- Map 1** Crystal Cascades
- Map 2** Gamburra Drive Park
- Map 3** Currunda Creek
- Map 4** BIG4 Holiday Park
- Map 5** Redlynch Central
- Map 6** Freshwater Christian College
- Map 7** Redlynch Park – Red Beret Hotel
- Map 8** Redlynch Park – Freshwater Connection
- Map 9** Barron River – Lower Freshwater Road
- Map 10** Barron River – Freshwater Connection

 **Areas outside the red zone may still be affected.**

If your home or business is located anywhere in the red zone or close to it, you should be prepared and know what to do if the Copperlode Falls Dam Emergency Evacuation Plan is activated.

Discussing and sharing this plan with your family or household members is essential. Walk the proposed evacuation route now so that everyone knows exactly where they need to go.



This image shows a blank sheet of white paper with horizontal ruling lines. The lines are evenly spaced and run across the width of the page. There are no margins, text, or other markings on the paper.

The map displays the Freshwater Creek area, including the Din Din Forest Reserve. Key features include:

- Assembly Point:** Marked with a red star and the number 1, located near the intersection of Freshwater Creek and Dowah Creek.
- Walking Tracks:** Indicated by dashed lines, connecting the Assembly Point to the Outdoor Warning Station and the Observation Deck.
- Outdoor Warning Station:** Marked with a yellow circle, located near the Crystal Cascades Carpark.
- Reference Point:** Marked with a black square, located near the Observation Deck.
- Red Zone:** Shaded pink areas along the creek banks.
- Legend:**
 - Yellow circle: Outdoor Warning Station
 - Black square: Reference Point
 - Pink square: Red Zone
 - Red star: Assembly Point
 - Dashed line: Walking Track
- Additional Labels:** Crystal Cascades Carpark, Observation Deck, Freshwater Creek, Din Din Forest Reserve, Dowah Creek, Redwood Intake Rd, Cascades Dr, Redwood Intake Rd.

Refer to page 5 for further information.

Connects to map 2

Map 2 Gamburra Drive Park



Map 3 Currunda Creek



▲ Connects to map 4 ▲

Legend

- Outdoor Warning Station
- Reference Point
- Red Zone
- ★ Assembly Point
- Walking Track

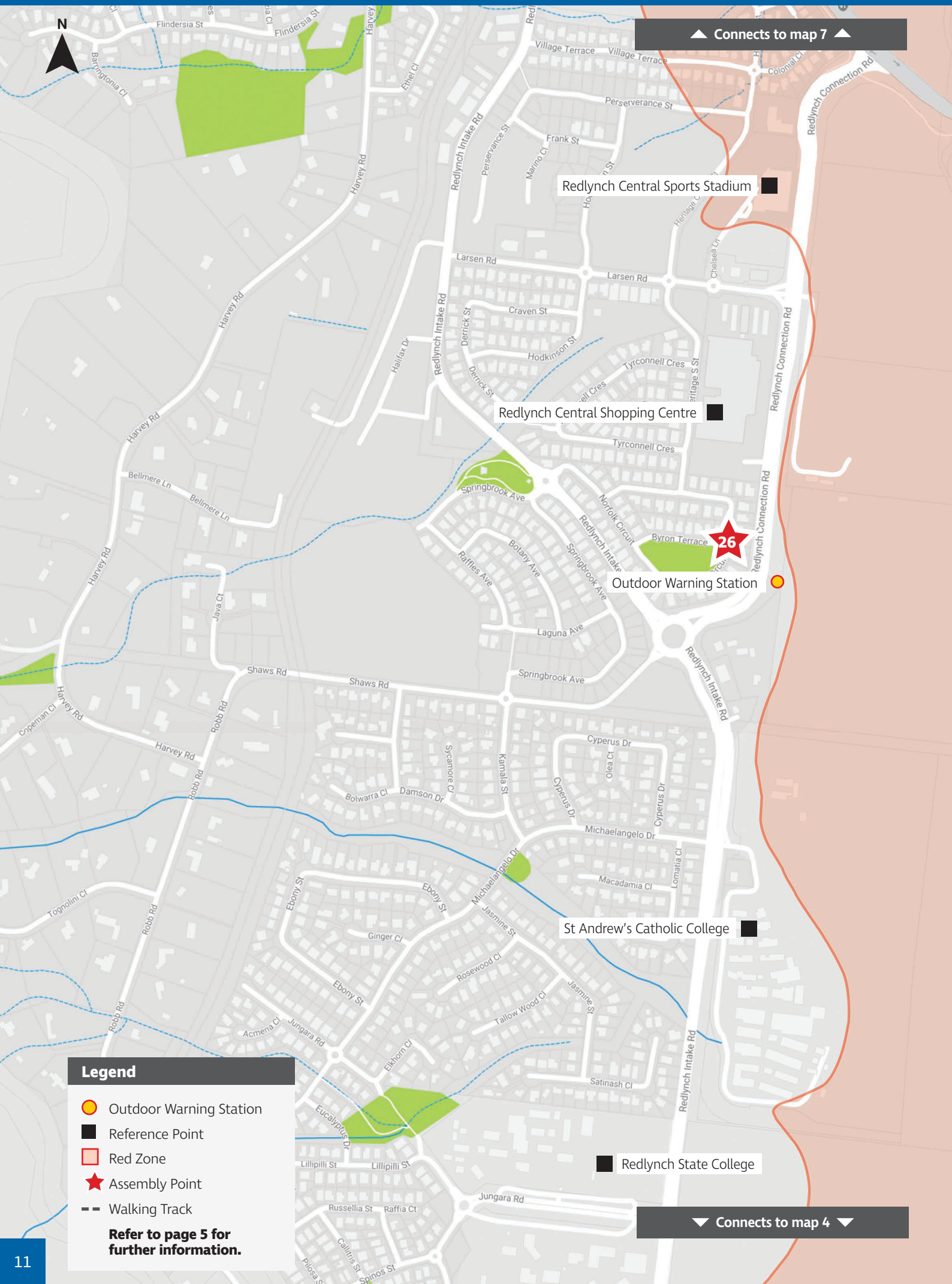
Refer to page 5 for further information.

▼ Connects to map 2 ▼

Map 4 BIG4 Holiday Park



Map 5 Redlynch Central



▲ Connects to map 7 ▲

Redlynch Central Sports Stadium

Redlynch Central Shopping Centre

Outdoor Warning Station

St Andrew's Catholic College

Redlynch State College

▼ Connects to map 4 ▼

Legend

- Outdoor Warning Station
- Reference Point
- Red Zone
- ★ Assembly Point
- Walking Track

Refer to page 5 for further information.

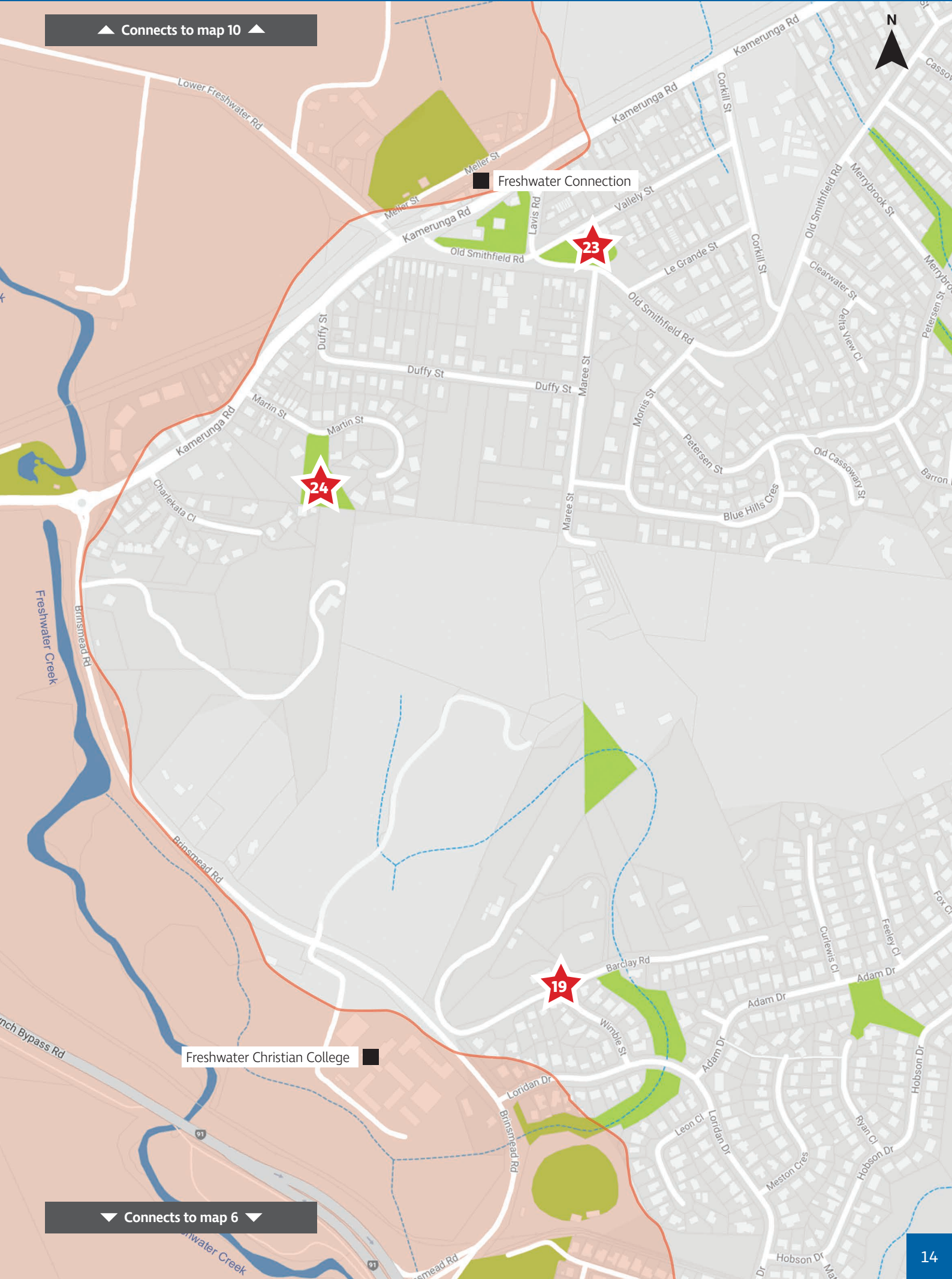
Map 6 Freshwater Christian College



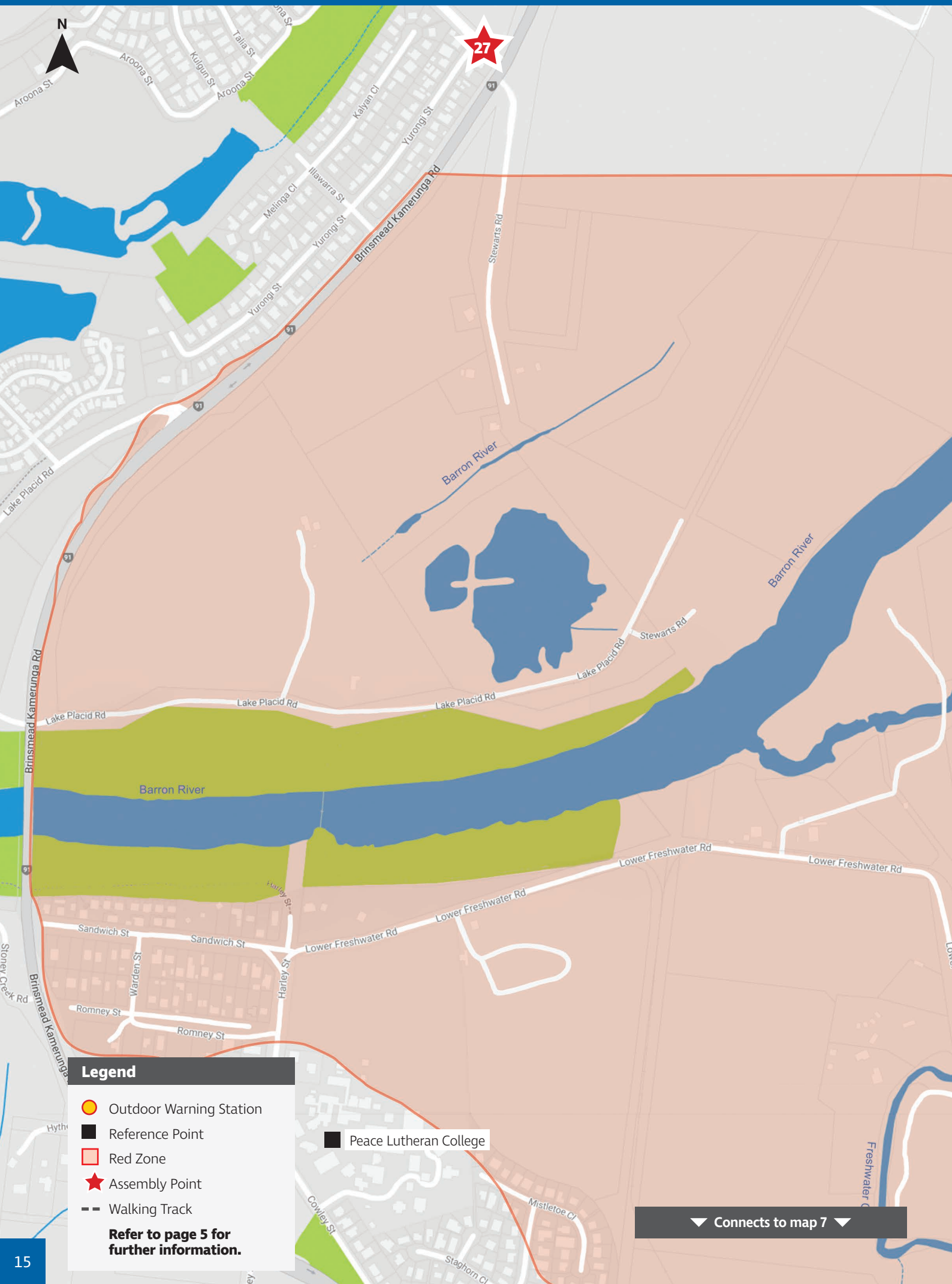
Map 7 Redlynch Park – Red Beret Hotel



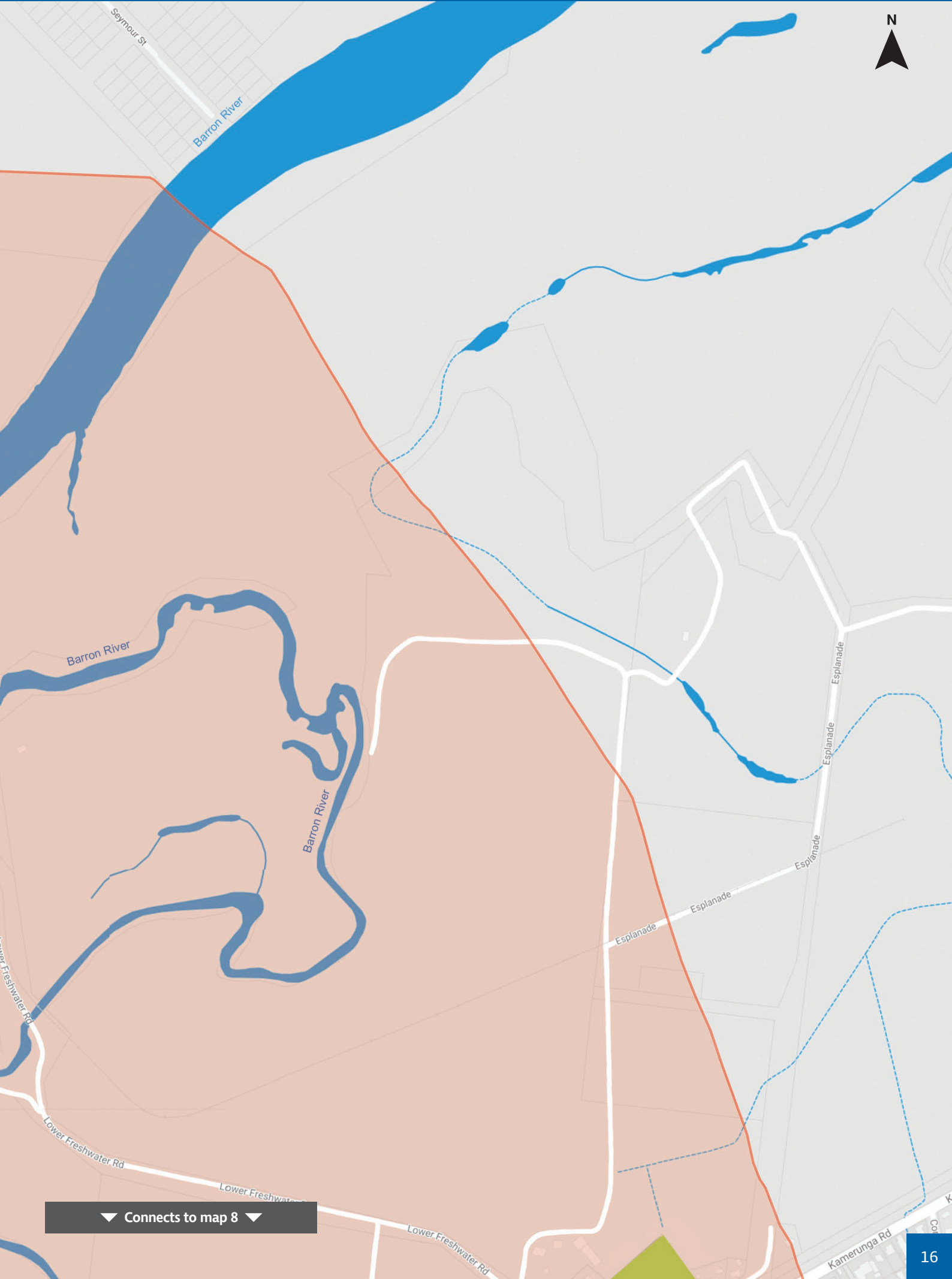
Map 8 Redlynch Park – Freshwater Connection



Map 9 Barron River – Lower Freshwater Road



Map 10 Barron River – Freshwater Connection



▼ Connects to map 8 ▼



Frequently Asked Questions



Why I need an emergency evacuation plan?

In an emergency, everyone has a responsibility for their own safety. Having a plan in place now will save you time should the early warning system be activated and the sirens and evacuation message sound. Residents and business owners in the Redlynch Valley and adjoining areas should use this guide to prepare, share and practise their own emergency evacuation plan.



What areas are likely to be affected?

While the likelihood of a dam failure is extremely low, the consequences could be severe across a large area that extends from Crystal Cascades through the Redlynch Valley to Freshwater and Brinsmead (see map page 6 – Affected Area Maps). It is extremely important that if you live in an identified red zone, you and your household understand the potential risk, know what to do if an evacuation order is called, and most importantly know where to go.



What is the 'red zone'?

The red zone illustrates the potentially affected high-risk areas in the unlikely event of a dam failure.



How much notice will I have?

The sirens will alert residents and visitors to evacuate only when a dam failure is imminent or has occurred. On hearing the sirens, the safest thing to do is to take immediate action and move on foot to a previously identified assembly point on higher ground away from the red zone.



What is the likelihood of a dam failure?

The likelihood of a dam failure is extremely low. Council has measures in place to ensure the integrity of the dam, including detailed monitoring, inspection procedures and ongoing maintenance programs. This evacuation guide relates only to an unforeseen non-weather-related event that results in dam failure.



I am unable to evacuate by foot. What should I do?

Everyone is responsible for their own safety. People with disabilities and elderly residents living in the red zone are responsible for their evacuation and should prepare a personal emergency evacuation plan. The plan should include identification of someone, such as a family member, neighbour or friend, to help with evacuating to an assembly point.



What is the Copperlode Falls Dam Emergency Action Plan?

As the owner of Copperlode Falls Dam, and as part of its legislative requirements, Cairns Regional Council has an Emergency Action Plan (EAP), which is available on Council's website. The EAP explains roles and responsibilities, communication procedures and dam specific emergency scenarios.



How will you know my phone number to alert visitors or me by text message?

Cairns Regional Council uses several text message alert systems in the case of an emergency. Refer to **Additional Warnings** on page 3.

PO Box 359 QLD 4870
1300 69 22 47
council@cairns.qld.gov.au
www.cairns.qld.gov.au

EMERGENCY CONTACTS

Police Fire Ambulance Emergencies only	000
State Emergency Service (SES)	13 25 00
Ergon Energy For power emergencies and urgent hazardous situations	13 22 96
Road and Traffic Conditions (TMR)	13 19 40
Health and Hospital Information (QH)	13 HEALTH (13 43 25 84)
Water Supply Emergencies (CRC)	1300 69 22 47
Non-Emergency Situations	Police: 13 14 44 Ambulance: 13 12 33