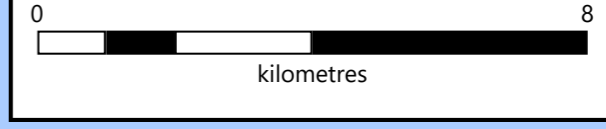


DOUGLAS SHIRE COUNCIL

Ellis Beach
Double Island
Palm Cove
Trinity Beach

Disclaimer:
While every care is taken to ensure the accuracy of this map, Cairns Regional Council makes no representations or warranties about its accuracy, reliability, completeness or suitability for any particular purpose and disclaims all responsibility and all liability (including without limitation, liability in negligence) for all expenses, losses, damage (including indirect or consequential damage) and costs which might incur as a result of the data being inaccurate or incomplete in any way and for any reason.
©Copyright Cairns Regional Council 2020
Cadastral Disclaimer:
Despite Department of Natural Resources and Mines (DNRM)'s best efforts, DNRM makes no representations or warranties in relation to the information and to the extent permitted by law, excludes or limit all warranties relating to correctness, accuracy, reliability, completeness or currency and all liability for any direct, indirect and consequential costs, losses, damages and expenses incurred in anyway (including but not limited to that arising from negligence) in connection with any use of or reliance on the information.
©The State of Queensland - Department of Natural Resources, Mines and Energy (DNRM) 2020



MAP No. SFM-01
Sheet 1 of 4

MAREEBA SHIRE COUNCIL

Redlynch
Earlville
Edmonton

CAIRNS

YARRABAH SHIRE COUNCIL

Fitzroy Island

CORAL SEA

TABLELANDS REGIONAL COUNCIL

Gordonvale

Frankland Islands

Babinda

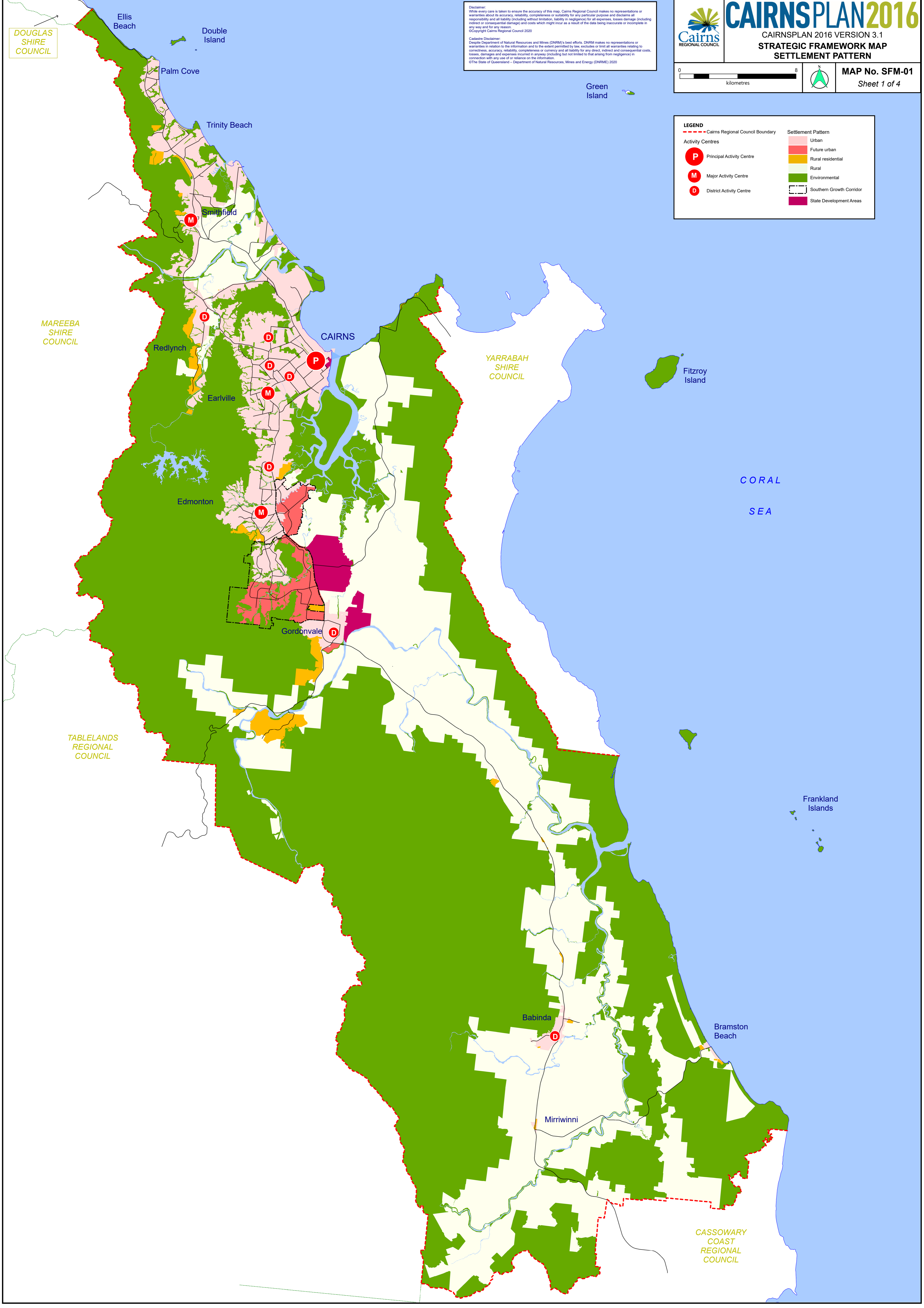
Bramston Beach

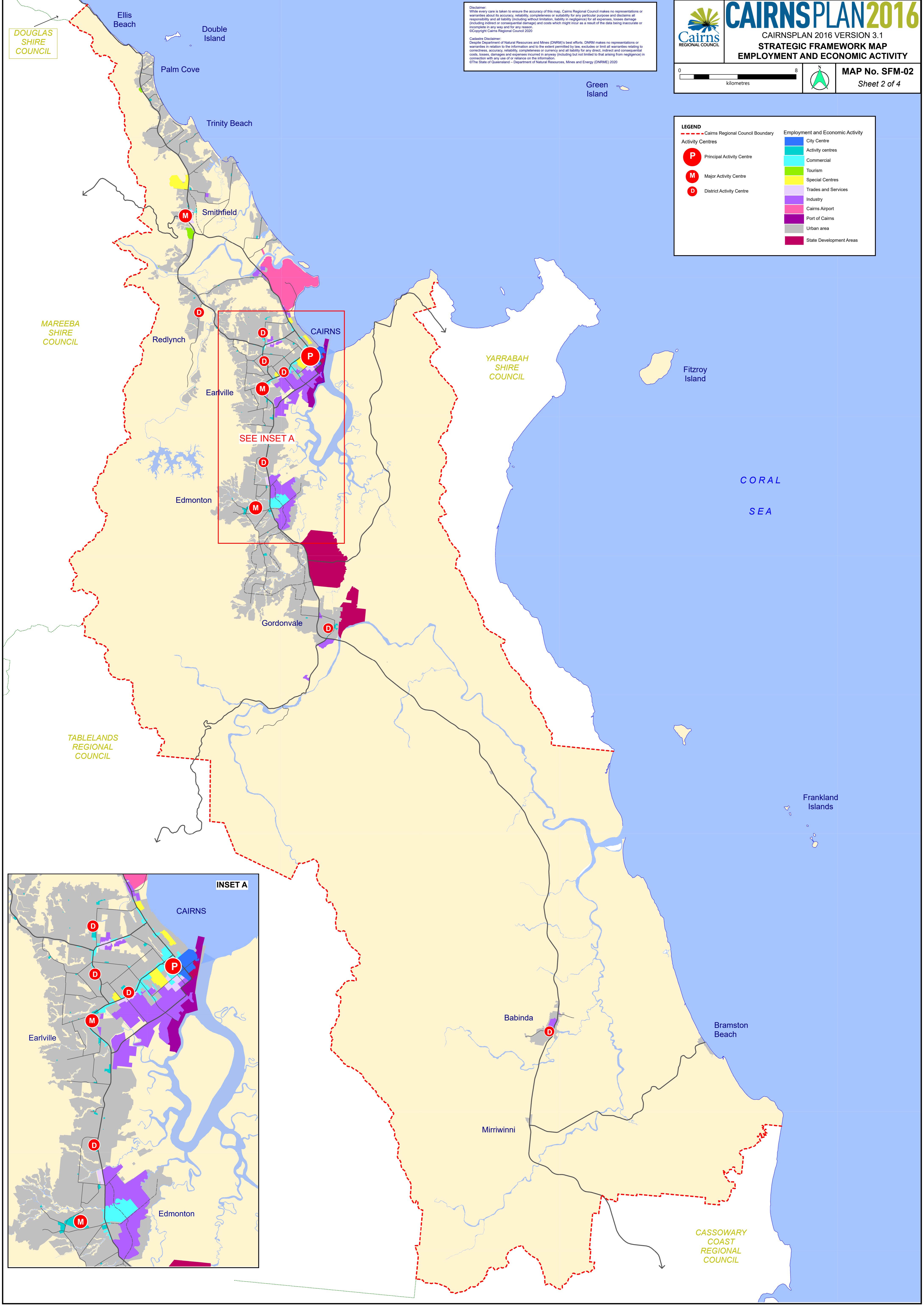
Mirriwinni

CASSOWARY COAST REGIONAL COUNCIL

LEGEND

Cairns Regional Council Boundary	Urban
Principal Activity Centre	Future urban
Major Activity Centre	Rural residential
District Activity Centre	Environmental
	Southern Growth Corridor
	State Development Areas



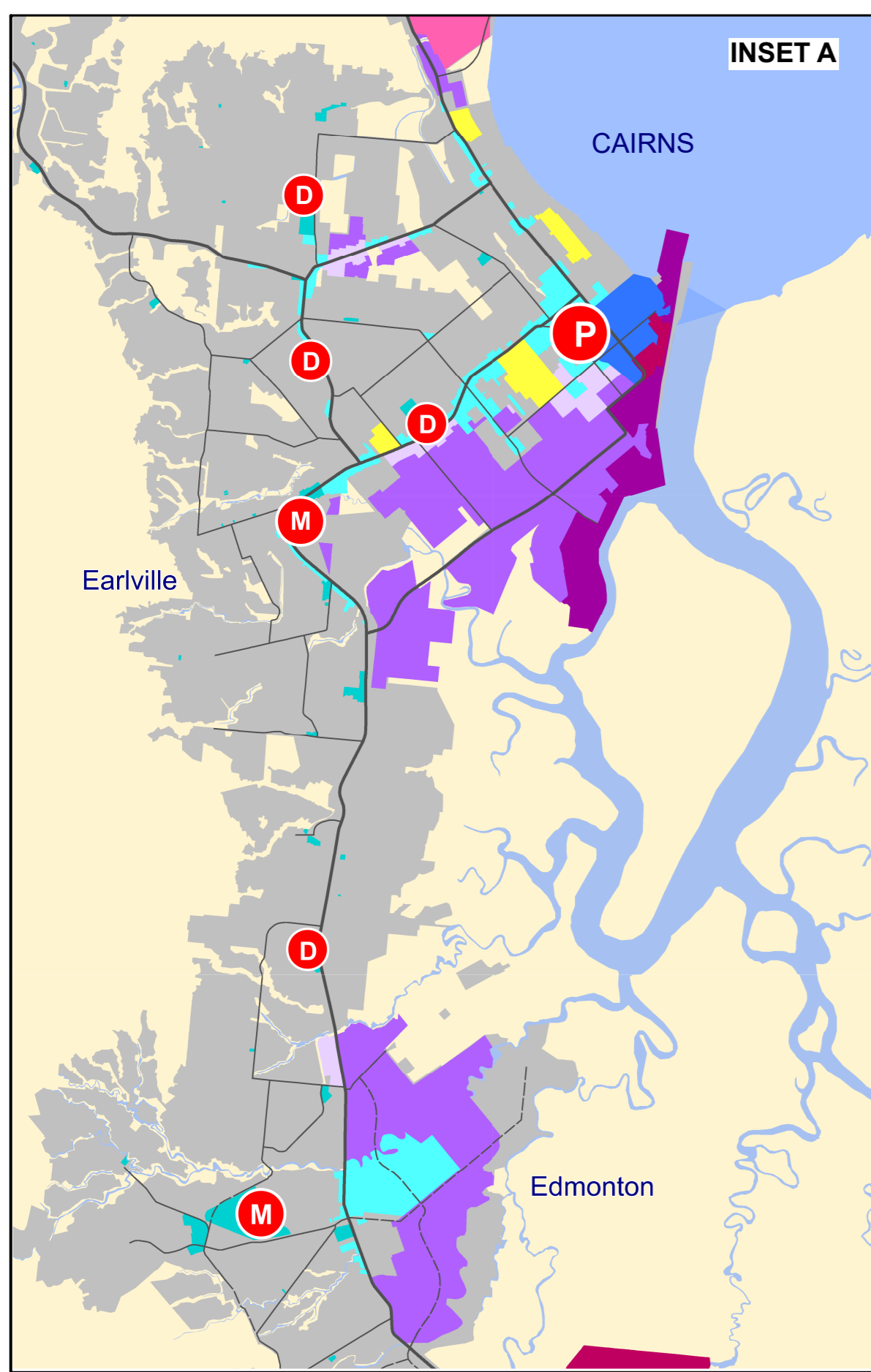


Disclaimer:
 While every care is taken to ensure the accuracy of this map, Cairns Regional Council makes no representations or warranties about its accuracy, reliability, completeness or suitability for any particular purpose and disclaims all responsibility and all liability (including without limitation, liability in negligence) for all expenses, losses, damage (including indirect or consequential damage) and costs which might incur as a result of the data being inaccurate or incomplete in any way and for any reason.
 ©Copyright Cairns Regional Council 2020
Cairns Disclaimer:
 Despite Department of Natural Resources and Mines (DNRM)'s best efforts, DNRM makes no representations or warranties in relation to the information and to the extent permitted by law, excludes or limit all warranties relating to correctness, accuracy, reliability, completeness or currency and all liability for any direct, indirect and consequential costs, losses, damages and expenses incurred in anyway (including but not limited to that arising from negligence) in connection with any use of or reliance on the information.
 ©The State of Queensland – Department of Natural Resources, Mines and Energy (DNRM) 2020

LEGEND

Cairns Regional Council Boundary	City Centre
Activity Centres	Activity centres
Principal Activity Centre	Commercial
Major Activity Centre	Tourism
District Activity Centre	Special Centres
	Trades and Services
	Industry
	Cairns Airport
	Port of Cairns
	Urban area
	State Development Areas

SEE INSET A



DOUGLAS SHIRE COUNCIL

Ellis Beach
Double Island

Palm Cove

Trinity Beach

Smithfield

CAIRNS

Redlynch

Earlville

Edmonton

Gordonvale

MAREEBA SHIRE COUNCIL

YARRABAH SHIRE COUNCIL

TABLELANDS REGIONAL COUNCIL

Babinda

Mirriwinni

CASSOWARY COAST REGIONAL COUNCIL

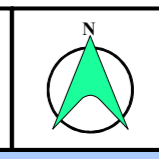
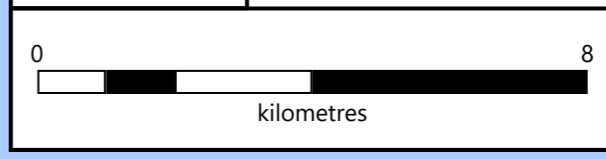


CAIRNSPLAN 2016

CAIRNSPLAN 2016 VERSION 3.1
STRATEGIC FRAMEWORK MAP
REGIONAL INFRASTRUCTURE

Disclaimer:
While every care is taken to ensure the accuracy of this map, Cairns Regional Council makes no representations or warranties about its accuracy, reliability, completeness or suitability for any particular purpose and disclaims all responsibility and all liability (including without limitation, liability in negligence) for all expenses, losses, damage (including indirect or consequential damage) and costs which might incur as a result of the data being inaccurate or incomplete in any way and for any reason.
©Copyright Cairns Regional Council 2020

Cairns Disclaimer:
Despite Department of Natural Resources and Mines (DNRM)'s best efforts, DNRM makes no representations or warranties in relation to the information and to the extent permitted by law, excludes or limit all warranties relating to correctness, accuracy, reliability, completeness or currency and all liability for any direct, indirect and consequential costs, losses, damages and expenses incurred in anyway (including but not limited to that arising from negligence) in connection with any use of or reliance on the information.
©The State of Queensland - Department of Natural Resources, Mines and Energy (DNRM) 2020



MAP No. SFM-03
Sheet 3 of 4

LEGEND	
	Public transport station
	Public transport route
	Cairns Regional Council Boundary
	Major road
	Other road
	Cane tramline
	State Railway
	Electricity structure feeder 275KV
	Electricity structure feeder 110-132KV
	Urban area
	State Development Areas

CORAL SEA

Frankland Islands

Bramston Beach

DOUGLAS
SHIRE
COUNCIL

Ellis Beach
Double Island

Palm Cove

Trinity Beach

Smithfield

CAIRNS

Redlynch

Earlville

Edmonton

Gordonvale

MAREEBA
SHIRE
COUNCIL

YARRABAH
SHIRE
COUNCIL

TABLELANDS
REGIONAL
COUNCIL

Babinda

Mirrivinni

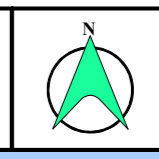
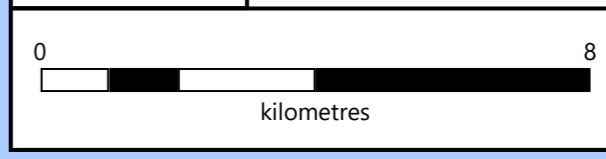
CASSOWARY
COAST
REGIONAL
COUNCIL



CAIRNSPLAN 2016

CAIRNSPLAN 2016 VERSION 3.1
WET TROPICS OF QUEENSLAND WORLD
HERITAGE AREA

Disclaimer:
While every care is taken to ensure the accuracy of this map, Cairns Regional Council makes no representations or warranties about its accuracy, reliability, completeness or suitability for any particular purpose and disclaims all responsibility and all liability (including without limitation, liability in negligence) for all expenses, losses, damage (including indirect or consequential damage) and costs which might incur as a result of the data being inaccurate or incomplete in any way and for any reason.
©Copyright Cairns Regional Council 2020
Cairns Disclaimer:
Despite Department of Natural Resources and Mines (DNRM)'s best efforts, DNRM makes no representations or warranties in relation to the information and to the extent permitted by law, excludes or limit all warranties relating to correctness, accuracy, reliability, completeness or currency and all liability for any direct, indirect and consequential costs, losses, damages and expenses incurred in anyway (including but not limited to that arising from negligence) in connection with any use of or reliance on the information.
©The State of Queensland - Department of Natural Resources, Mines and Energy (DNRM) 2020



MAP No. SFM-04
Sheet 4 of 4

LEGEND	
	Major Roads
	Other Roads
	Cairns Regional Council Boundary
	Wet Tropics of Queensland World Heritage Area
	Urban area
	State Development Areas

CORAL
SEA

Frankland
Islands

Bramston
Beach