

Curate Create Mentorship Project Information

The Curate Create program sees emerging visual artists designing innovative exhibitions and installations to activate unique creative spaces and places.

The mentorship will start in May with an initial workshop, additional workshops will be scheduled during the year (based on applicant availability) with the final artworks going on display between September and November 2022.

To apply we are asking young (up to 25 years) and/or emerging artists to submit exhibition/installations concepts for the spaces outlined below. Selected applicants will have the opportunity to work with established artists, Cultural Services Project Officers and Gallery technicians to learn curatorial and project management skills in addition to support with artwork creation right through to artwork/exhibition installation.

Selected applicants will have project materials funded, receive in-kind equipment through Cultural Services, marketing support and ongoing support from mentor artists, Cultural Services Projects Officers and Gallery Technicians.

Artwork Guidelines

Cultural Services has selected three sites across our venues. In your application we are seeking initial concepts for artworks and installations that will activate these spaces. When developing your ideas please consider the following guidelines

1. Cultural Services will be looking for artwork ideas that are innovative, engaging and interactive and accessible to diverse audiences.
2. In addition artworks should respond to the thematic guidelines outlined for each site below
3. Artworks to have a materials budget of up to \$1000 (don't hesitate to go under), *please note as part of the mentorship Cultural Services can support projects with access to equipment such as PA's, lights and projectors.*
4. Applicants can be individuals or groups. Please consider your resources and time available to commit to the project. It is expected that all applicants will be able to complete the full 6 month mentorship.

To apply, please complete the online form and upload:

1. A brief artist statement about your work and how it relates the themes identified for each site.
2. Concept Drawings/Images
3. Approximate Budget

If you have any questions about the program or application process, please don't hesitate to contact us on 4032 6634 or flameprojects@ Cairns.qld.gov.au.

Site options

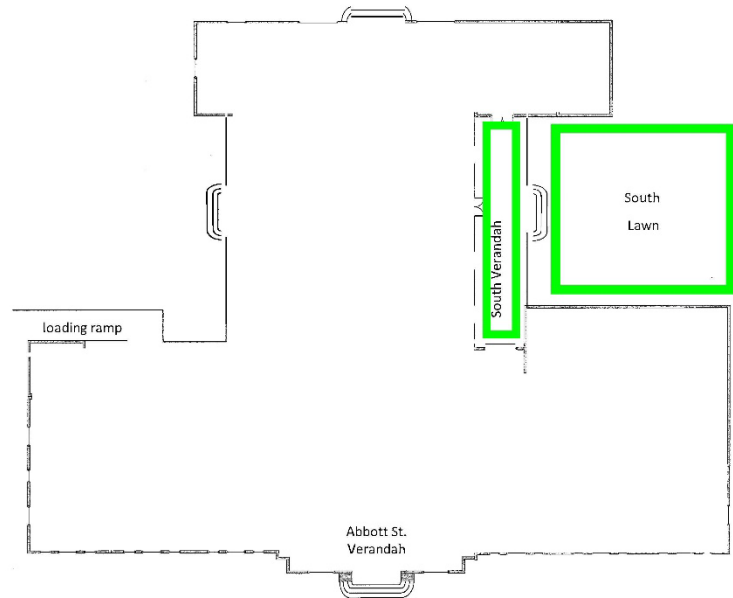
Cairns Court House – South Lawn (including veranda)

This low-set concrete building with a simple classic facade was, historically, the second courthouse building constructed in Cairns, with its foundations laid in 1919.

The South Lawn is a flat, grassy area, surrounded by white walls which are suitable for projections. The veranda provides a weather proof option for installations.

The thematic guidelines for works created in this space are;

- **Artworks that are vibrant, bold and experimental**
- **Works that celebrate our city's unique environment and heritage.**



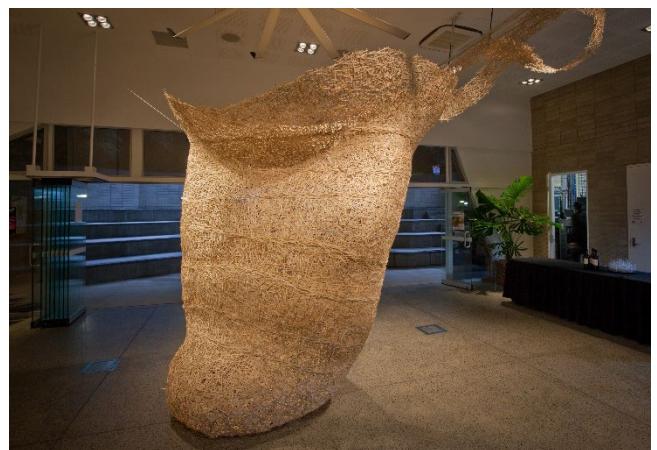
Botanic Gardens Visitor Centre – Multipurpose room & Exhibition Wall

The Botanic Gardens Visitor Centre is camouflaged in the unique FNQ Rainforest. This unique building is an entry point to the Cairns Botanic Gardens and the Tanks Arts Centre.

The multipurpose room is a blank flat space with the option of hanging 2-dimensional works on the wall and/or 3 dimensional installations on the floors (samples of previous installations below). The space has the option of being a closed climate controlled space or completely open to the Amphitheatre outside.

The thematic guidelines for works created in the Botanic Gardens Visitor Centre are;

- **North Queensland region native flora & fauna**
- **Works that are made with or reflect natural materials.**
- **Works that reflect our natural heritage.**
- **Artworks that reflect local community stories and issues**



Tanks Arts Centre -External spaces

The Tanks Arts Centre is comprised of three historical WWII concrete oil tanks nestled into the side of Mt Whitfield. The Tanks have been converted into exhibition, performance and community spaces connected by a series of pathways lined with native flora and fauna that has partially concealed industrial equipment, bund walls and secret stairways.



The thematic guidelines for works created in the Tanks Arts Centre and Botanic Gardens Visitor Centre are;

- **Works that speak to or reflect Indigenous Cultures**
- **That tell the story of cultures across the Asia Pacific Region**
- **Works that reflect local industry and local history**

