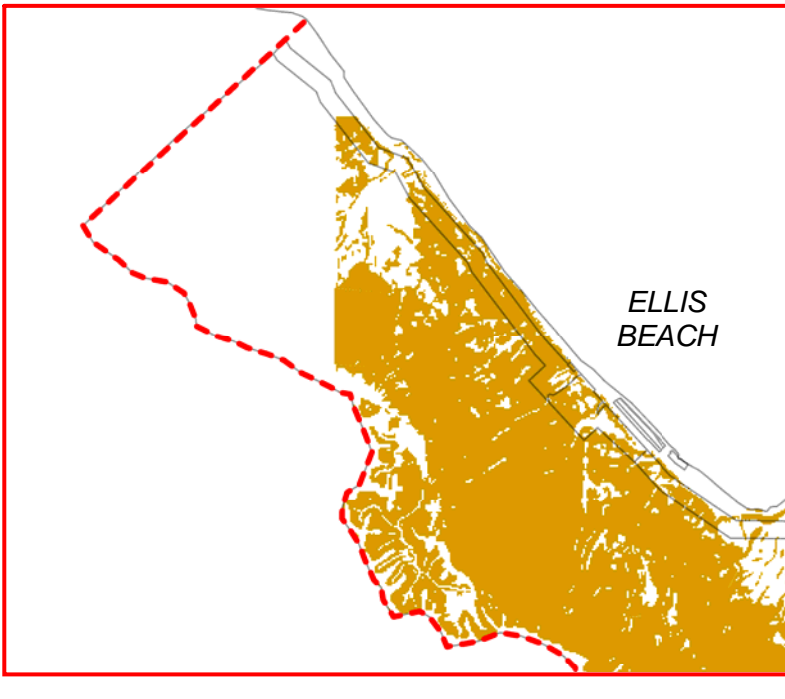
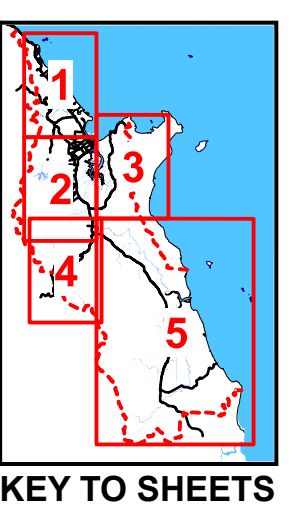


SEE
INSET A

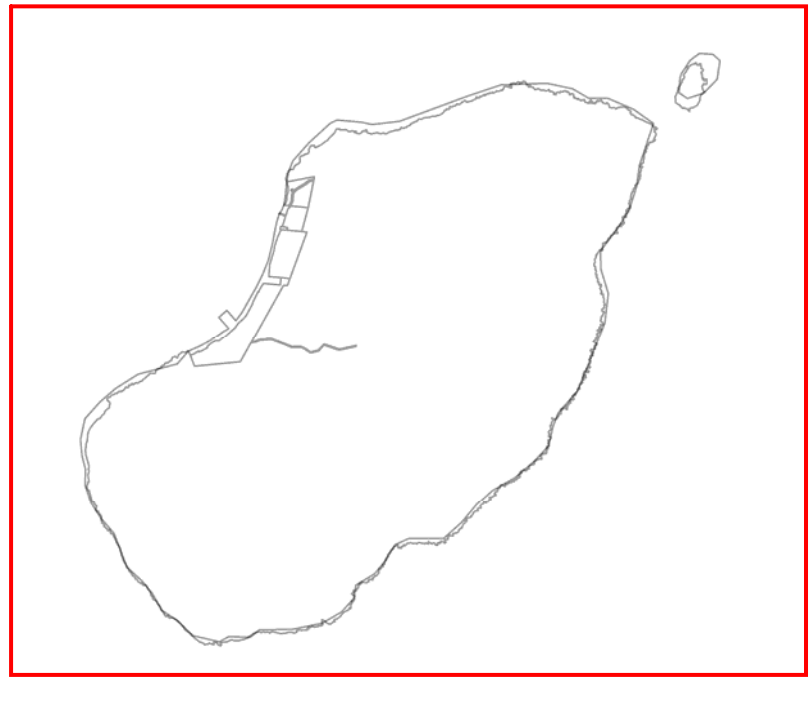
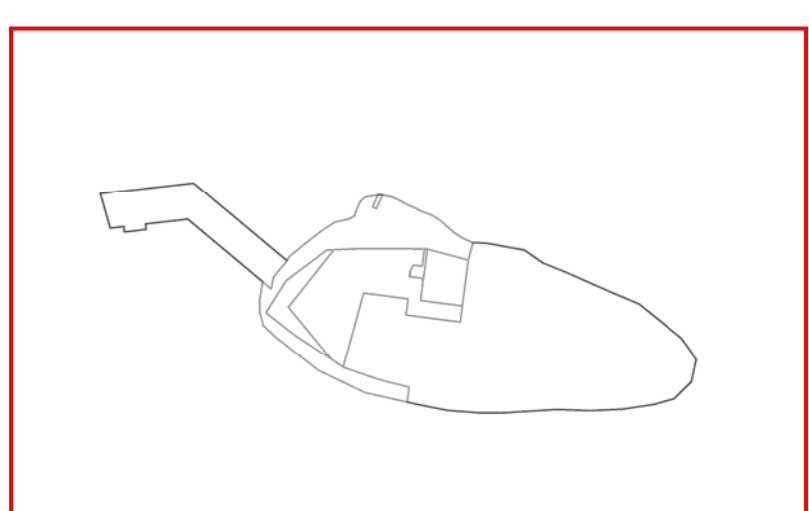
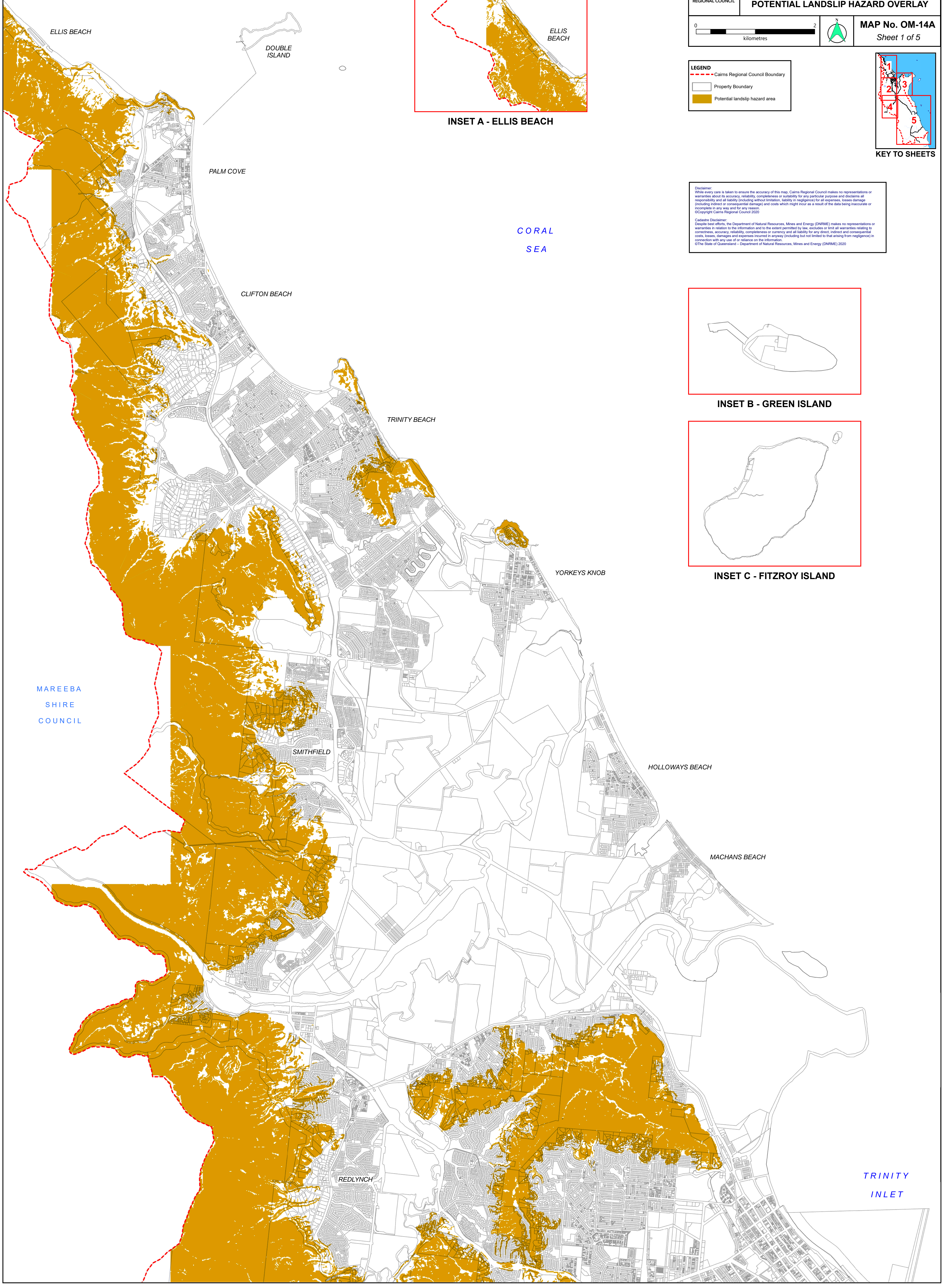
LEGEND

- Cairns Regional Council Boundary
- Property Boundary
- Potential landslide hazard area



Disclaimer:
While every care is taken to ensure the accuracy of this map, Cairns Regional Council makes no representations or warranties about its accuracy, reliability, completeness or suitability for any particular purpose and disclaims all responsibility and all liability (including without limitation, liability in negligence) for all expenses, losses, damage (including indirect or consequential damage) and costs which might incur as a result of the data being inaccurate or incomplete in any way and for any reason.
©Copyright Cairns Regional Council 2020

Cairns Disclaimer:
Despite best efforts, the Department of Natural Resources, Mines and Energy (DNRM) makes no representations or warranties in relation to the information and to the extent permitted by law, excludes or limits all warranties relating to correctness, accuracy, reliability, completeness or currency and all liability for any direct, indirect and consequential costs, losses, damages and expenses incurred in anyway (including but not limited to that arising from negligence) in connection with any use of or reliance on the information.
©The State of Queensland – Department of Natural Resources, Mines and Energy (DNRM) 2020



MAREEBA
SHIRE
COUNCIL

REDLYNCH

KANIMBLA

MOUNT
SHERIDAN

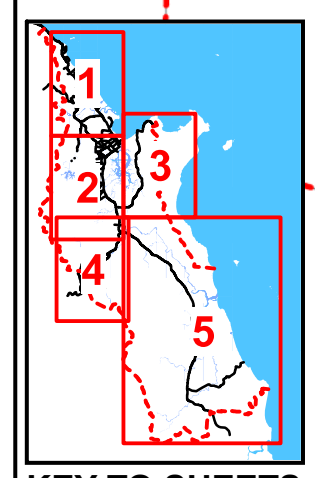
EDMONTON

GORDONVALE


Disclaimer:
While every care is taken to ensure the accuracy of this map, Cairns Regional Council makes no representations or warranties about its accuracy, reliability, completeness or suitability for any particular purpose and disclaims all responsibility and all liability (including without limitation, liability in negligence) for all expenses, losses, damage (including indirect or consequential damage) and costs which might incur as a result of the data being inaccurate or incomplete in any way and for any reason.
©Copyright Cairns Regional Council 2020

Cadastral Disclaimer:
Despite best efforts, the Department of Natural Resources, Mines and Energy (DNRM) makes no representations or warranties in relation to the information and to the extent permitted by law, excludes or limit all warranties relating to correctness, accuracy, reliability, completeness or currency and all liability for any direct, indirect and consequential costs, losses, damages and expenses incurred in anyway (including but not limited to that arising from negligence) in connection with any use of or reliance on the information.
©The State of Queensland - Department of Natural Resources, Mines and Energy (DNRM) 2020

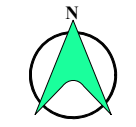
LEGEND
- Cairns Regional Council Boundary
- Property Boundary
- Potential landslip hazard area



KEY TO SHEETS

 **CAIRNSPLAN2016**
CAIRNSPLAN 2016 VERSION 3.0
POTENTIAL LANDSLIP HAZARD OVERLAY

0 2
kilometres

 **MAP No. OM-14B**
Sheet 2 of 5

TRINITY
INLET

EAST
TRINITY




YARRABAH
SHIRE
COUNCIL

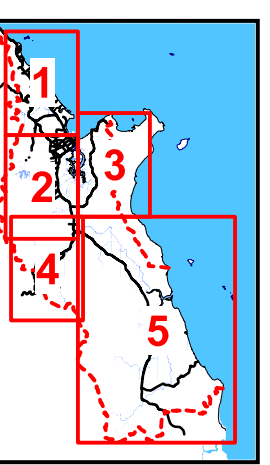
CORAL
SEA

Disclaimer:
While every care is taken to ensure the accuracy of this map, Cairns Regional Council makes no representations or warranties about its accuracy, reliability, completeness or suitability for any particular purpose and disclaims all responsibility and all liability (including without limitation, liability in negligence) for all expenses, losses, damage (including indirect or consequential damage) and costs which might incur as a result of the data being inaccurate or incomplete in any way and for any reason.
©Copyright Cairns Regional Council 2020

Cadastral Disclaimer:
Despite best efforts, the Department of Natural Resources, Mines and Energy (DNRM) makes no representations or warranties in relation to the information and to the extent permitted by law, excludes or limit all warranties relating to correctness, accuracy, reliability, completeness or currency and all liability for any direct, indirect and consequential costs, losses, damages and expenses incurred in anyway (including but not limited to that arising from negligence) in connection with any use of or reliance on the information.
©The State of Queensland – Department of Natural Resources, Mines and Energy (DNRM) 2020

LEGEND

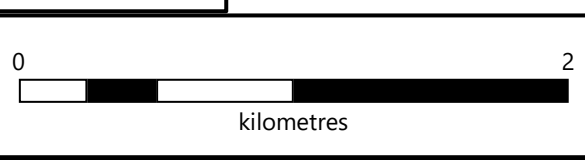
-  Cairns Regional Council Boundary
-  Property Boundary
-  Potential landslip hazard area



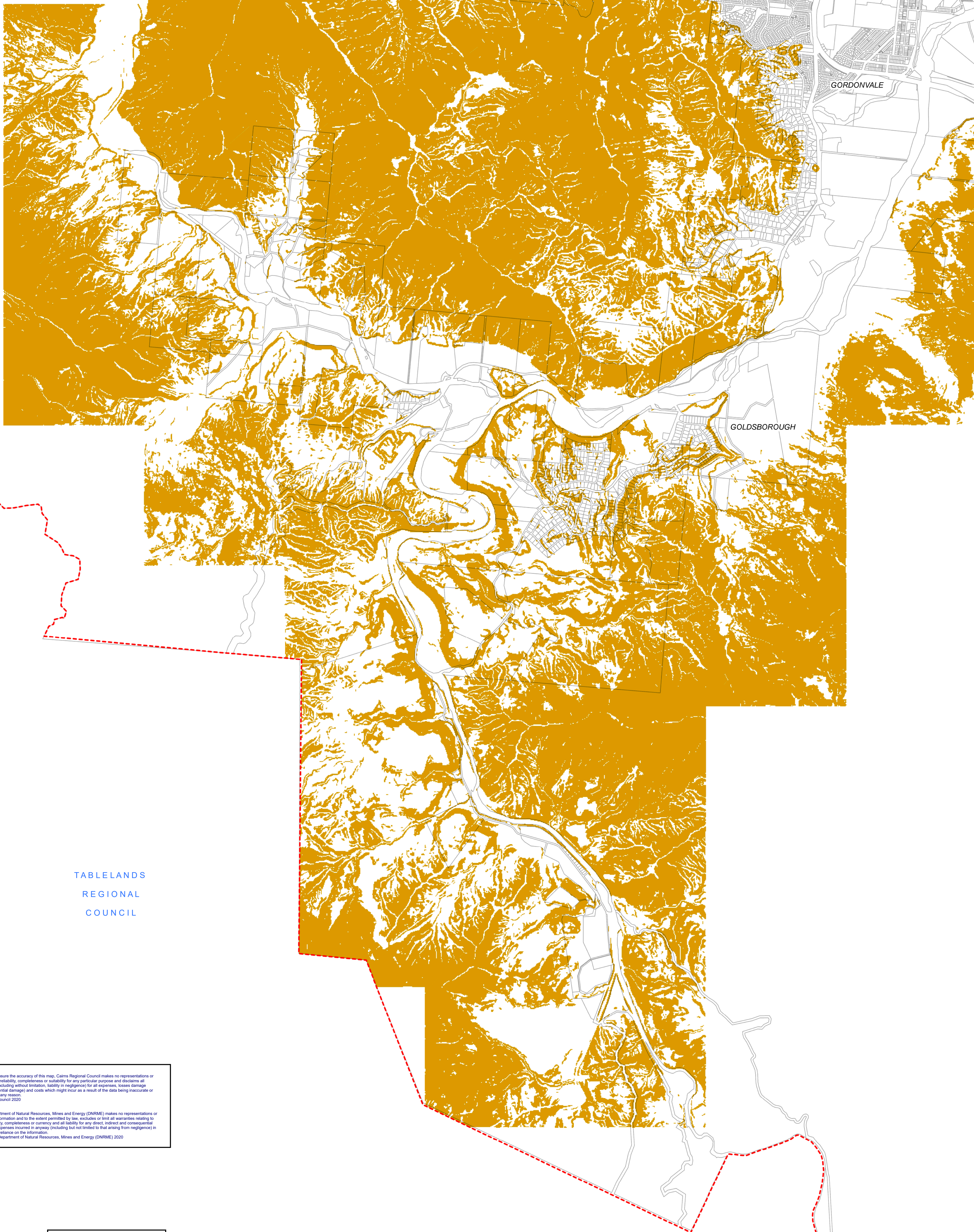
KEY TO SHEETS



CAIRNSPLAN2016
CAIRNSPLAN 2016 VERSION 3.0
POTENTIAL LANDSLIP HAZARD OVERLAY



MAP No. OM-14C
Sheet 3 of 5



GORDONVALE

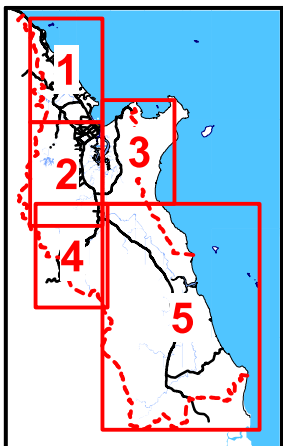
GOLDSBOROUGH

TABLELANDS
REGIONAL
COUNCIL

Disclaimer:
While every care is taken to ensure the accuracy of this map, Cairns Regional Council makes no representations or warranties about its accuracy, reliability, completeness or suitability for any particular purpose and disclaims all responsibility and all liability (including without limitation, liability in negligence) for all expenses, losses, damage (including indirect or consequential damage) and costs which might incur as a result of the data being inaccurate or incomplete in any way and for any reason.

Cadastral Disclaimer:
Despite best efforts, the Department of Natural Resources, Mines and Energy (DNRM) makes no representations or warranties in relation to the information and to the extent permitted by law, excludes or limits all warranties relating to correctness, accuracy, reliability, completeness or currency and all liability for any direct, indirect and consequential costs, losses, damages and expenses incurred in anyway (including but not limited to that arising from negligence) in connection with any use of or reliance on the information.

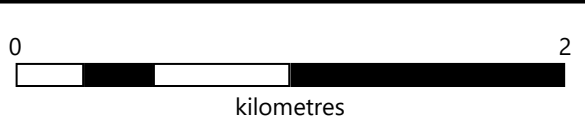
©The State of Queensland – Department of Natural Resources, Mines and Energy (DNRM) 2020



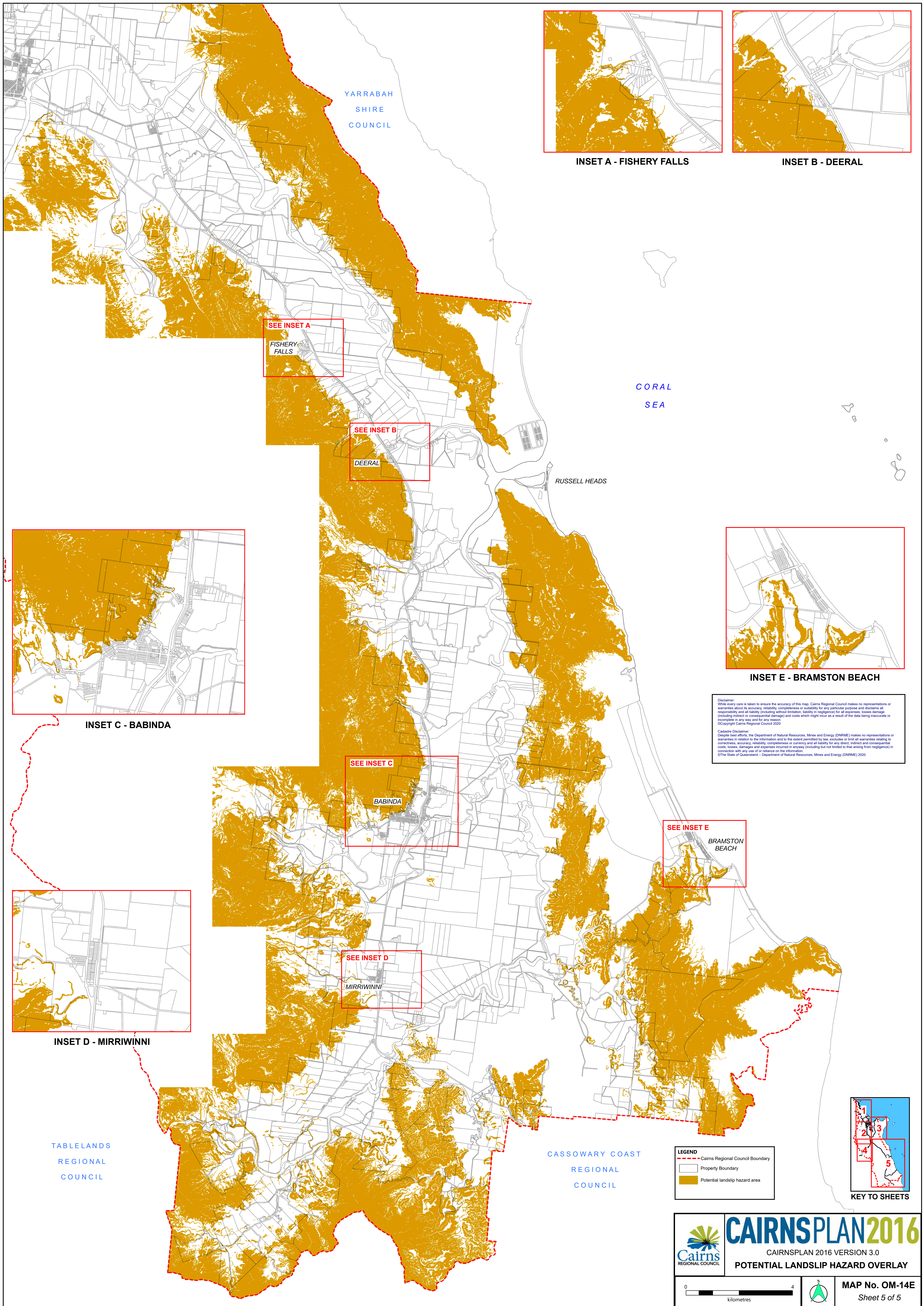
KEY TO SHEETS

LEGEND	
	Cairns Regional Council Boundary
	Property Boundary
	Potential landslide hazard area

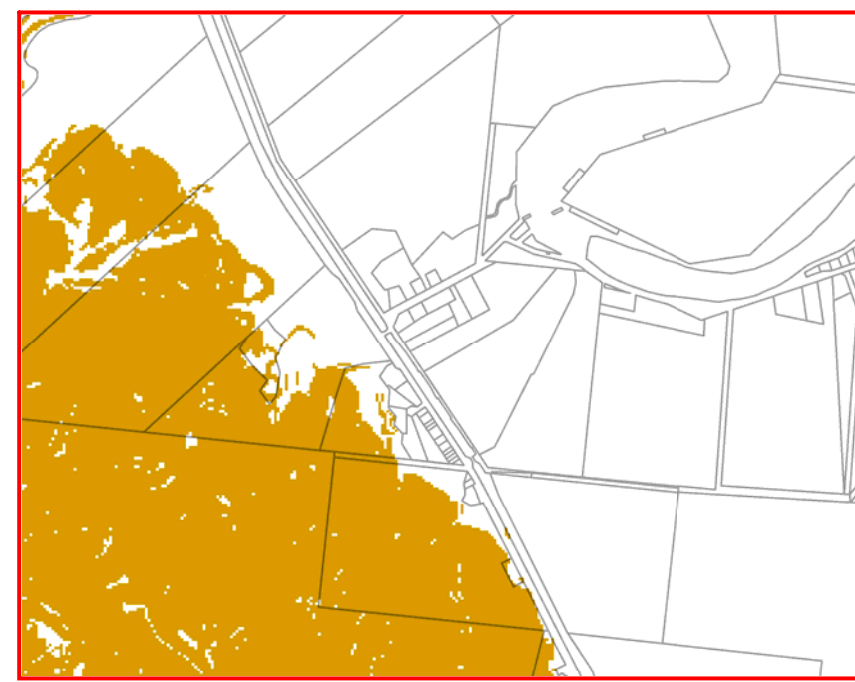
CAIRNSPLAN2016
CAIRNSPLAN 2016 VERSION 3.0
POTENTIAL LANDSLIP HAZARD OVERLAY



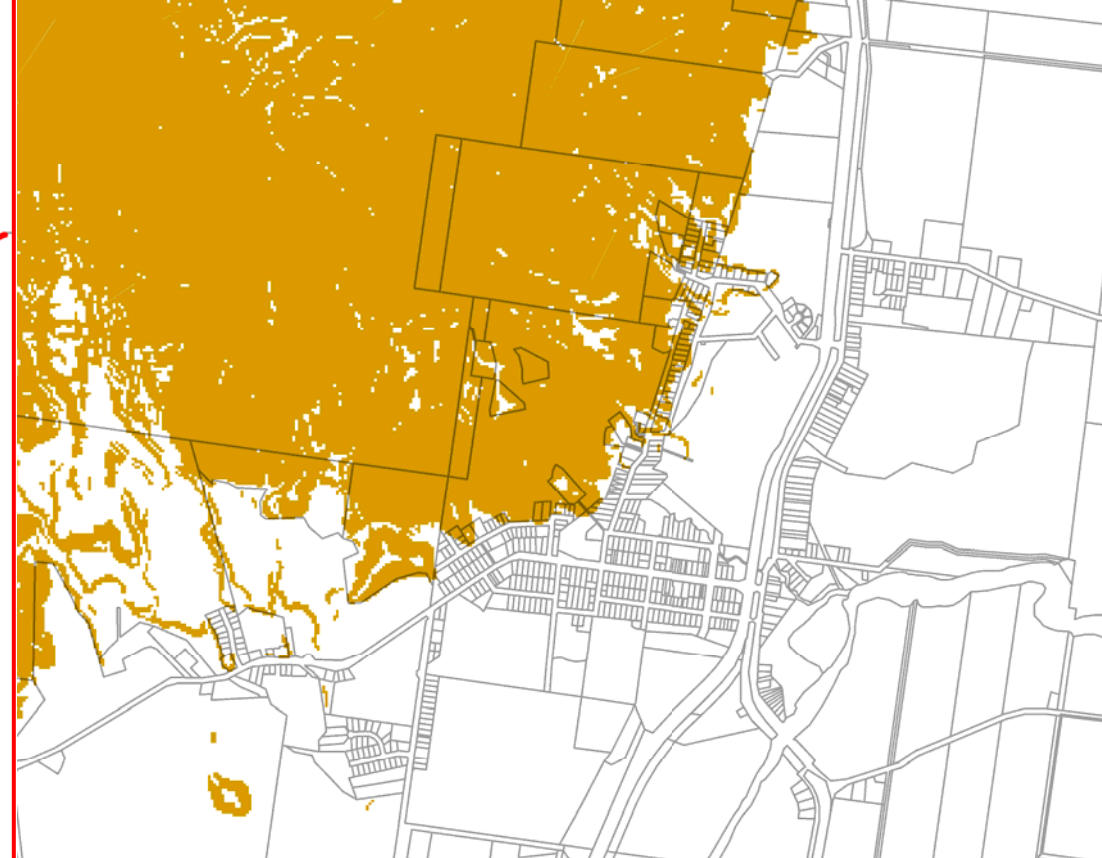
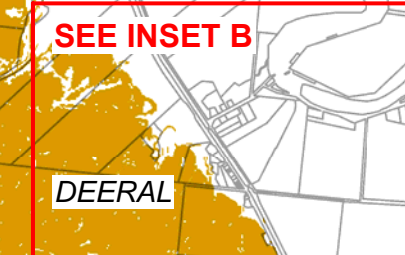
MAP No. OM-14D
Sheet 4 of 5



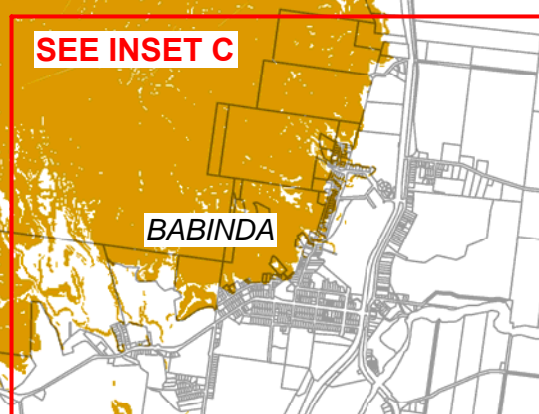
INSET A - FISHERY FALLS



INSET B - DEERAL



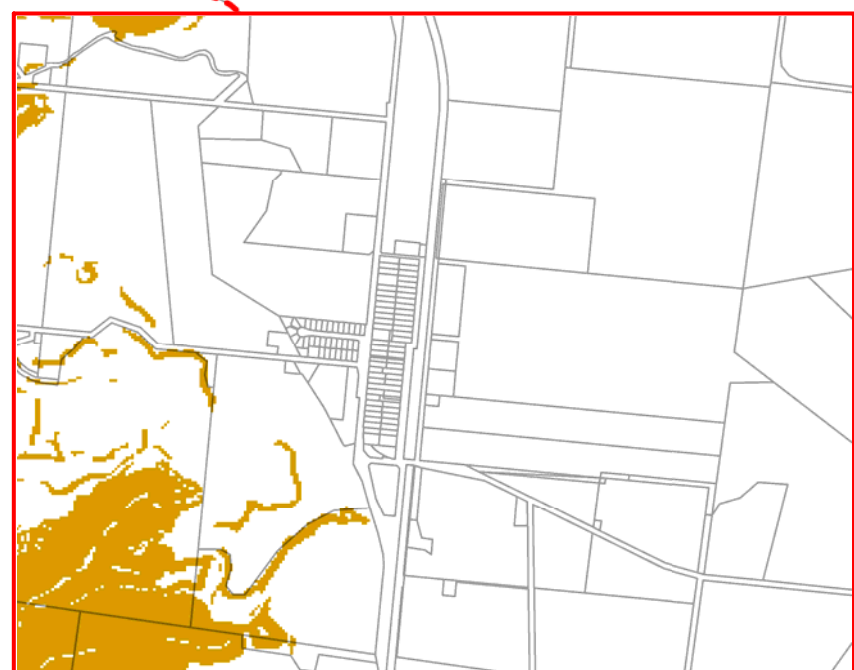
INSET C - BABINDA



INSET E - BRAMSTON BEACH

Disclaimer:
While every care is taken to ensure the accuracy of this map, Cairns Regional Council makes no representations or warranties about its accuracy, reliability, completeness or suitability for any particular purpose and disclaims all responsibility and all liability (including without limitation, liability in negligence) for all expenses, losses, damage (including indirect or consequential damage) and costs which might incur as a result of the data being inaccurate or incomplete in any way and for any reason.
©Copyright Cairns Regional Council 2020

Cadastral Disclaimer:
Despite best efforts, the Department of Natural Resources, Mines and Energy (DNRM) makes no representations or warranties in relation to the information and to the extent permitted by law, excludes or limits all warranties relating to correctness, accuracy, reliability, completeness or currency and all liability for any direct, indirect and consequential costs, losses, damages and expenses incurred in anyway (including but not limited to that arising from negligence) in connection with any use of or reliance on the information.
©The State of Queensland - Department of Natural Resources, Mines and Energy (DNRM) 2020



INSET D - MIRRIWINNI

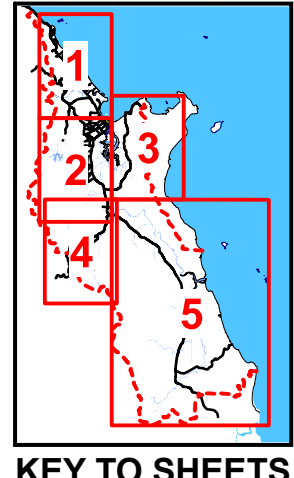


TABLELANDS
REGIONAL
COUNCIL

CASSOWARY COAST
REGIONAL
COUNCIL

LEGEND

- Cairns Regional Council Boundary
- Property Boundary
- Potential landslide hazard area



KEY TO SHEETS

CAIRNSPLAN2016
CAIRNSPLAN 2016 VERSION 3.0
POTENTIAL LANDSLIP HAZARD OVERLAY

MAP No. OM-14E
Sheet 5 of 5