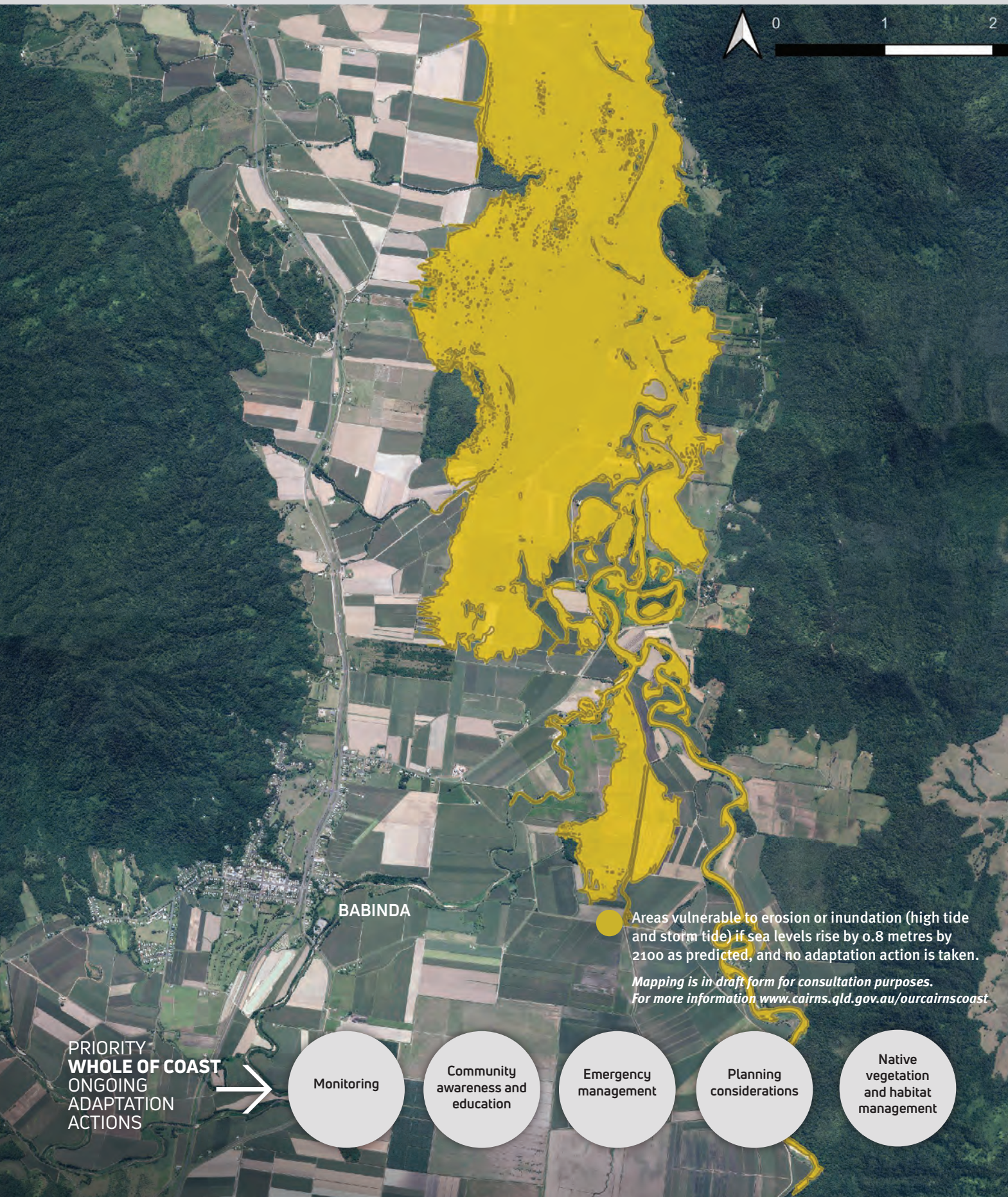


BABINDA

Rural Babinda and its surrounding townships, 60km south of Cairns city, is in the shadow of Queensland's two highest mountains, Mt Bartle Frere and Mt Bellenden Kerr in Wooroonooran National Park. Key attractions are the Babinda Boulders, Josephine Falls and Eubenangee Swamp National Park – home to over 190 species of birds.



COMMUNITY ASSETS AT RISK BY 2100

- Babinda is at risk of inundation due to its low-lying position
- Priority areas of significant environmental value are at risk from coastal hazards

- Various road (4.7 km)
- Supporting services (e.g. water)

BABINDA

WHAT THE COMMUNITY VALUES

- Boat ramp
- Sugar cane farms
- Cane rail adjacent to rivers
- Tourist attractions (e.g. Babinda Boulders)
- Schools

COMMUNITY ADAPTATION PRIORITIES

- Modify existing infrastructure to be resilient to coastal hazards
- Habitat revegetation along the length of Russell River and in the wetlands



Local Adaptation Pathways to respond to coastal hazards

(For community assets, based on monitored sea level rise)

TIMING BASED ON SEA LEVEL RISE

SHORT TERM	MED TERM	LONG TERM
0-0.3m	0.3-0.6m	>0.6m

MODIFY INFRASTRUCTURE AND HAZARD RESILIENT DESIGN

- Upgrade or relocate existing infrastructure, including Russell River Road and the public toilet block at end of life at Russel River Boat Ramp to be resilient to coastal hazards
- Manually change land levels or road levels within coastal inundation hazard areas to reduce risk for new or upgraded public assets. This is important to ensure that access is maintained to key infrastructure, such as the transfer station, and ensure safe evacuation outside of inundation areas

ACCEPT THE RISK AND EMBRACE COASTAL PROCESSES

- Progressively review or relocate infrastructure as inundation encroaches on assets

