

WATER AND WASTE COMMITTEE**15 FEBRUARY 2012****1****WATER - SITUATION REPORT**

Alex Ung: 1/58/13-23: #3220808v7

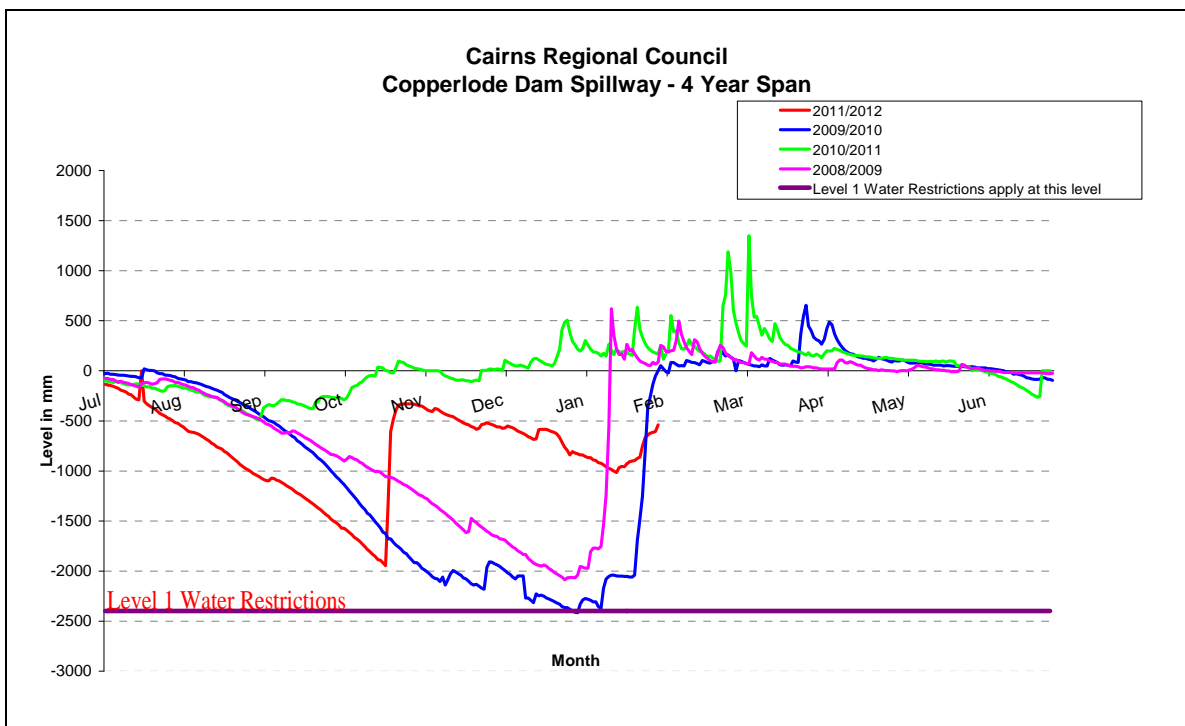
RECOMMENDATION:**It is recommended that this report be noted.**

This report provides details of water supply levels and water consumption patterns for the main Cairns and Douglas supplies.

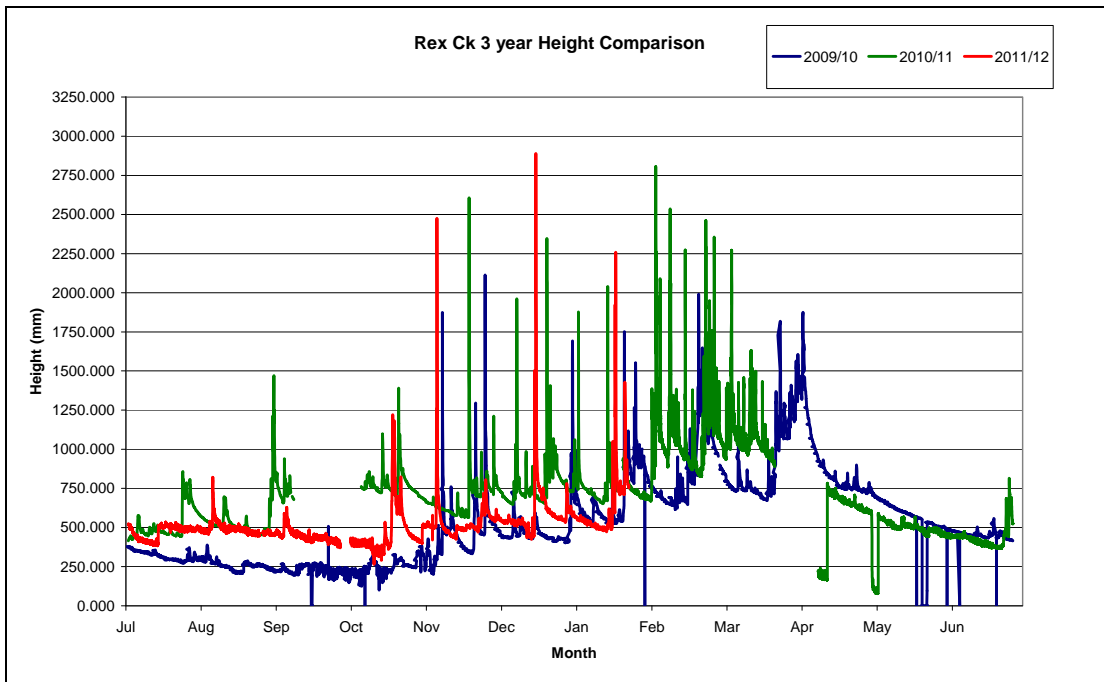
WATER SUPPLY LEVELS**Copperlode Falls Dam Water Supply**

Copperlode Falls Dam was 95.2%% full at the end of January 2012.

The following graph shows the spillway level from 2008/2009 to date.



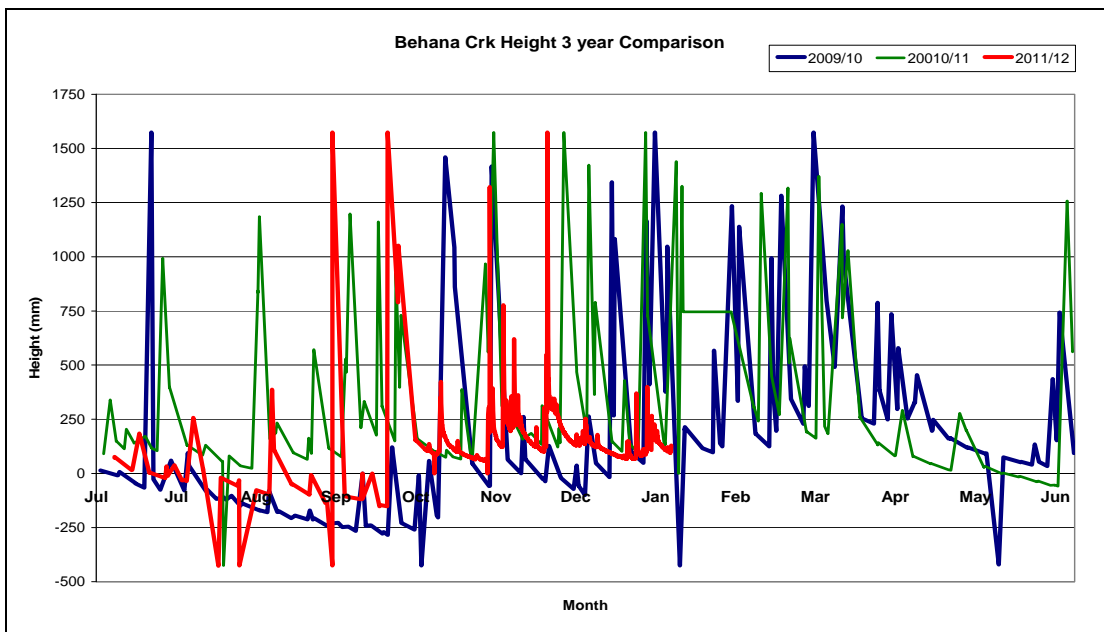
Rex Creek Water Supply



Based on the Water Licence 408436, Rex Creek recorded flow rates greater than 902.04L/s to 1704.02L/s for the month of January allowing for an extraction flow rate of 370L/s. The maximum extraction flow rate recorded for January was 163.63/s.

Behana Creek Water Supply

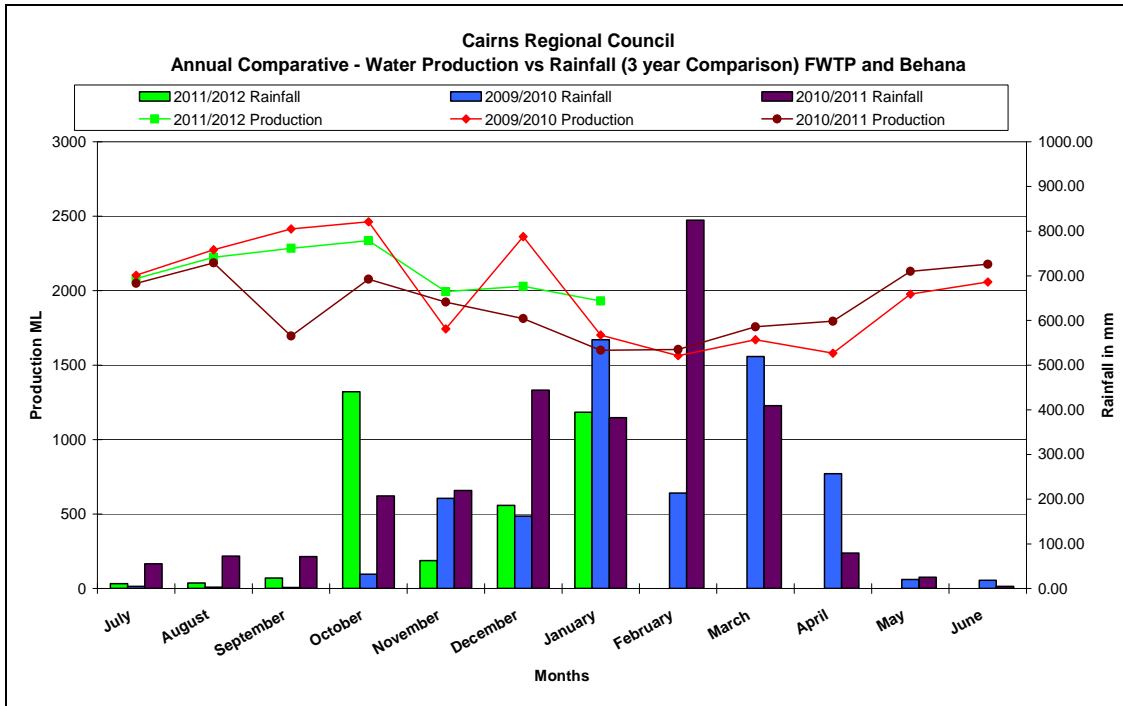
Behana Creek at the end of January 2012 had a creek flow at the intake weir of greater than 101ML. Behana Water supply was brought back on line on 26 August 2011 following commissioning of the ultraviolet disinfection system.



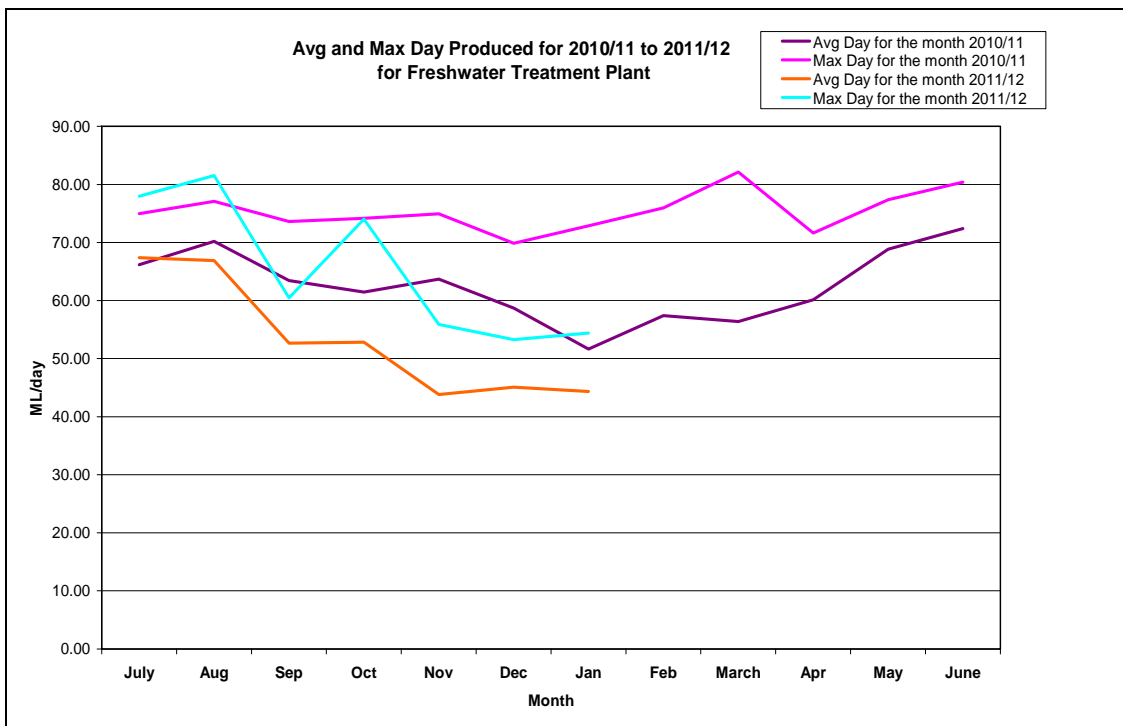
CONSUMPTION AND RAINFALL:

Rainfall recorded at the Freshwater Creek Plant for January 2012 was 394.5mm.

The graph below shows water production versus rainfall in Cairns City from July 2009 to date.

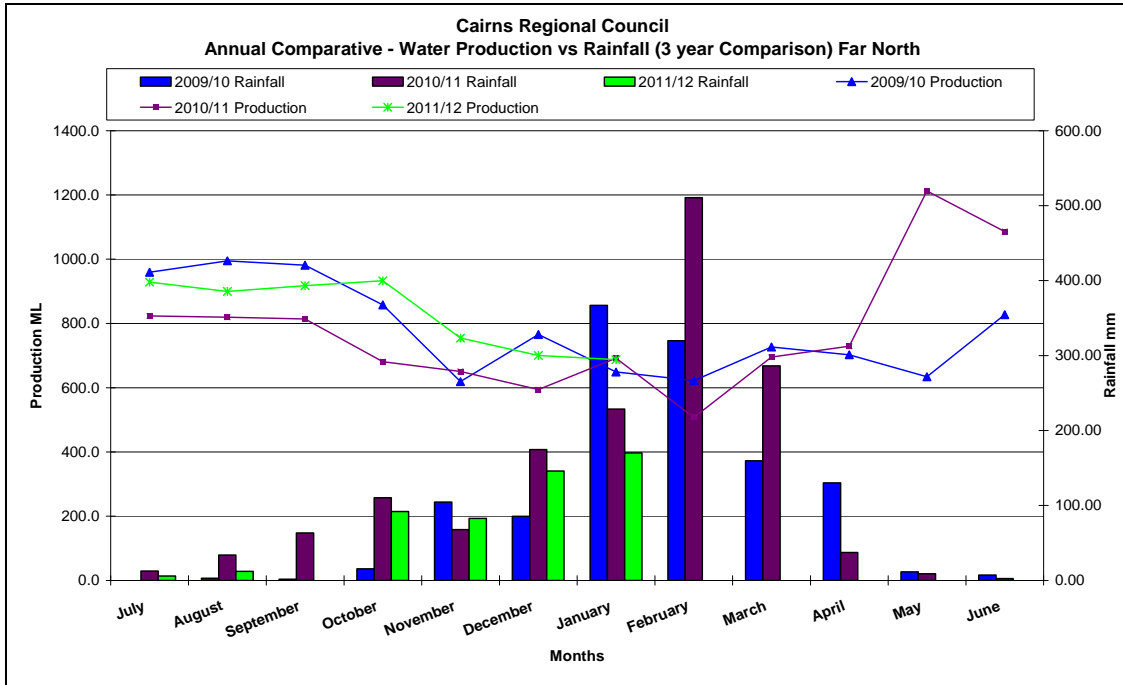


This graph shows the average and maximum day water production for Freshwater Water Plant

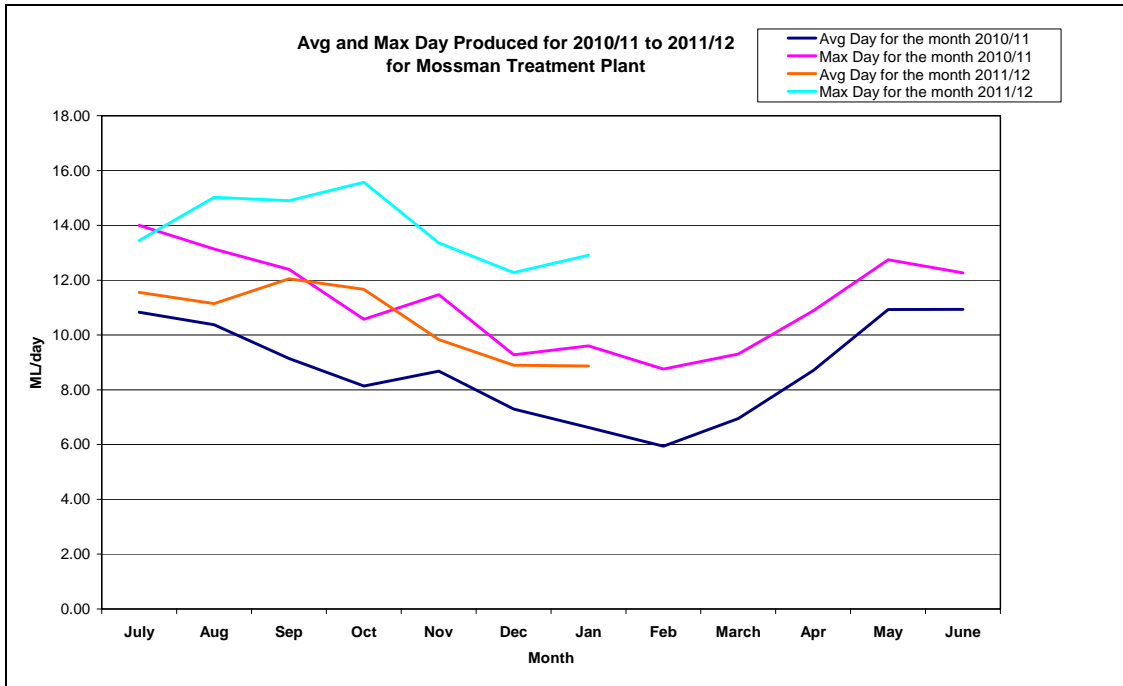


Rainfall recorded at the Rainfall Data for Far North for January 2012 was 397.0 mm.

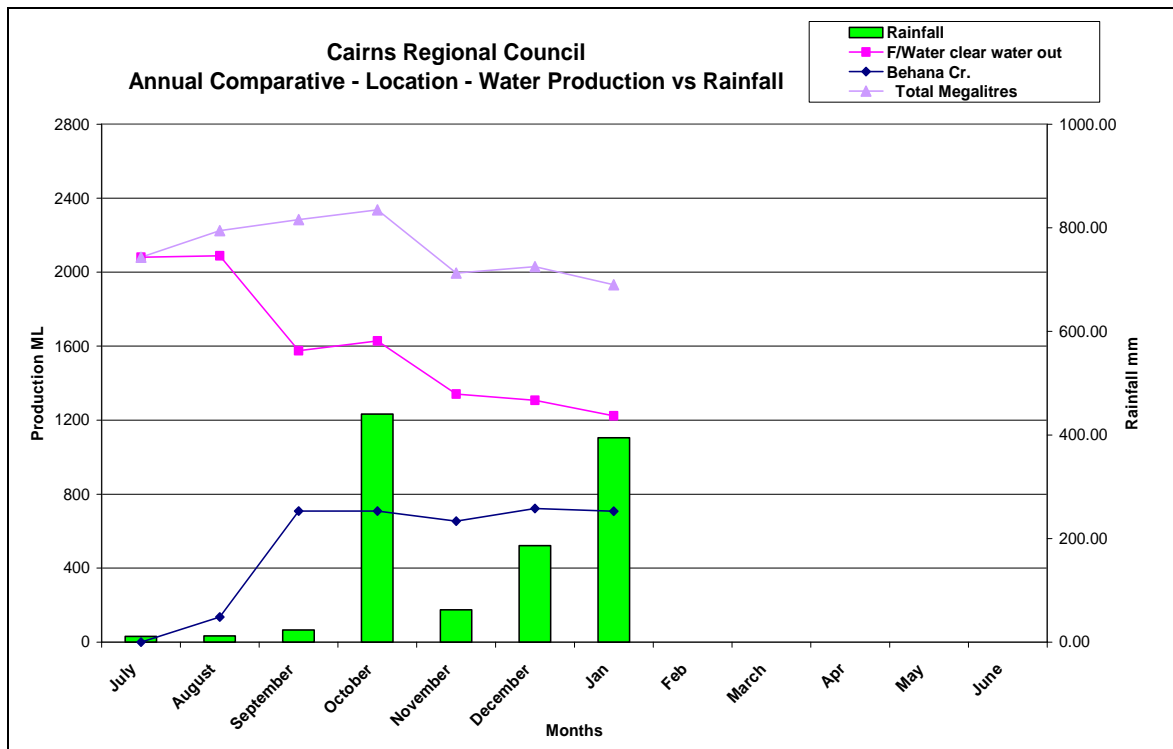
The graph below shows water production versus rainfall in Far North from July 2009 to date.



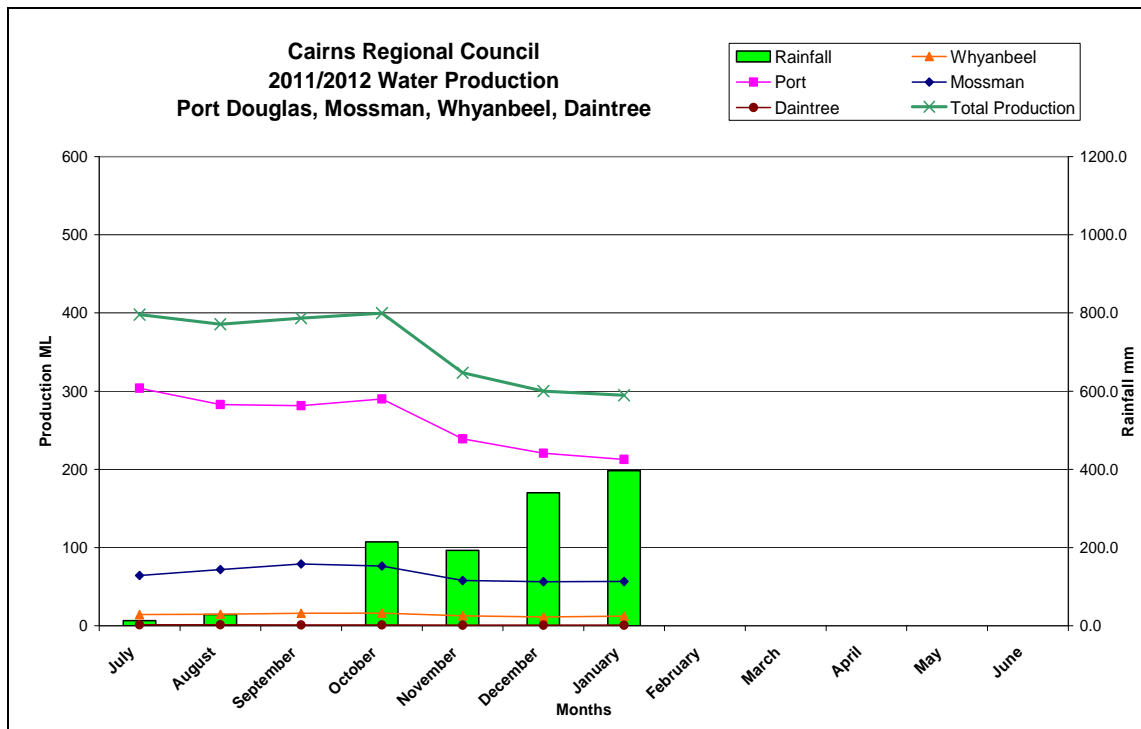
This graph shows Average and Maximum Day water production for Mossman Water Plant



The following graph shows the volume of water extracted from Behana Creek and supplied from Freshwater Treatment Plant.



The following graph shows the volume of water supplied from the Mossman, Daintree and Whyanbeel Water Treatment Plants.



CONSIDERATIONS:

Corporate and Operational Plans:

Council's submission is aligned with the following objective in the Corporate Plan and the Water and Waste Operational plan

Corporate Plan

Goal 4 Delivering Services and Infrastructure

4.1 – Provide a robust, secure, high quality water supply to meet the growing needs of the community.

Operational Plan

Operations - To operate and maintain reliable Water and Wastewater treatment facilities and reticulation networks.

Statutory:

Water must be supplied in accordance with Water Extraction Licences as per below:

Policy:

Nil

Financial and Risk:

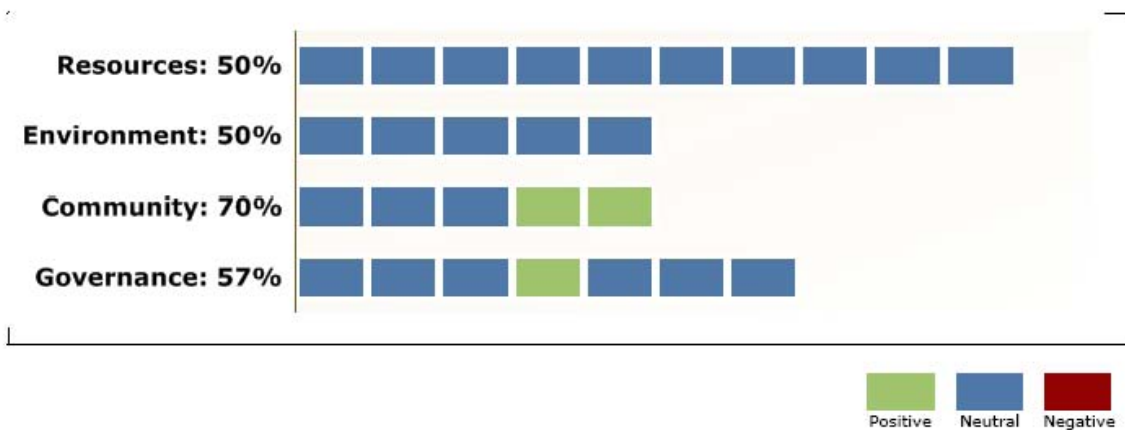
Nil

Consultation:

Nil.

Sustainability:**Sustainability Assessment report****SUSTAINABILITY
SCORECARD**

Assessment ID	741
Activity / Project:	Water Situation Report
Department:	Water & Waste
Branch:	Operations
Project manager:	Alex Ung
Assessment owner:	Alex Ung
Assessment date:	9/11/2011
Budget:	\$0.00
Approval status:	Pending
Project stage:	Implementation
Project description:	Water Situation Report
Project count:	1



Alex Ung
MANAGER OPERATIONS

Bruce Gardiner
GENERAL MANAGER WATER & WASTE